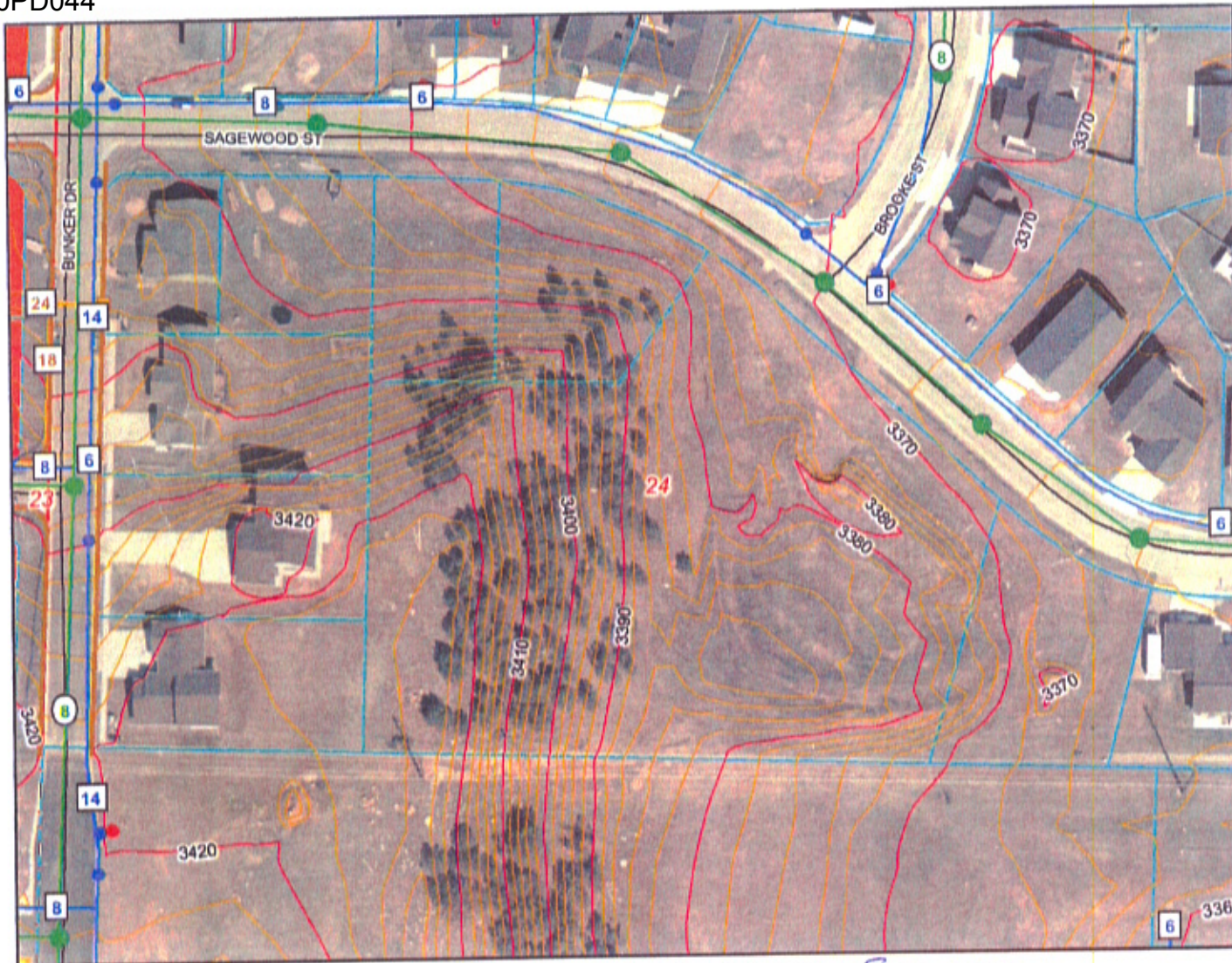
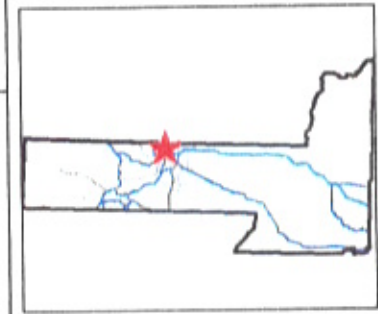


10PD044



Water + Sewer

Map center: 44° 7' 8.2" N, 103° 13' 49.3" W



Legend

- Sewer Manholes
- Sewer Lift Stations
- Sewer Forced Mains
- Sewer Gravity Mains
- ▲ Water Control Valves
- Water Hydrants
- Water Pump Stations
- ★ Water Storage
- Water System Valves
- Pressurized Water Mains
- Storm Drain Manholes
- ◆ Storm Drain Junction Boxes
- Storm Drain Inlets
- Storm Drain Flap Gates
- ▲ Storm Drain FES
- Storm Drain Edge Drains
- Storm Drain Channels
- Storm Drain Pipes
- Roads
- Not classified
- Interstate
- US Highway
- SD Highway
- County Highway
- Main Road
- Minor Arterial
- Collector
- Ramp
- Paved Road
- Unpaved Road
- Unimproved Road

RECEIVED

Scale: 1:1,321

JUN 11 2010

DISCLAIMER: This map is provided "as is" without warranty of any representation of accuracy, timeliness, or completeness. The burden for determining accuracy, completeness, timeliness, merchantability, and fitness for or the appropriateness for use rests solely on the user. Rapid City and Pennington County make no warranties, express or implied, as to the use of the map. There are no implied warranties of merchantability or fitness for a particular purpose. The user acknowledges and accepts the limitations of the map, including the fact that the data used to create the map is dynamic and is in a constant state of maintenance, correction, and update. This document does not represent a legal survey of the land. There are no restrictions on the distribution of printed Rapid City/Pennington County maps, other than the City of Rapid City copyright/credit notice must be legible on the print. The user agrees to recognize and honor in perpetuity the copyrights and other proprietary claims for the map(s) established or produced by the City of Rapid City or the vendors furnishing said items to the City of Rapid City.