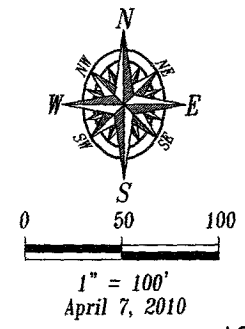


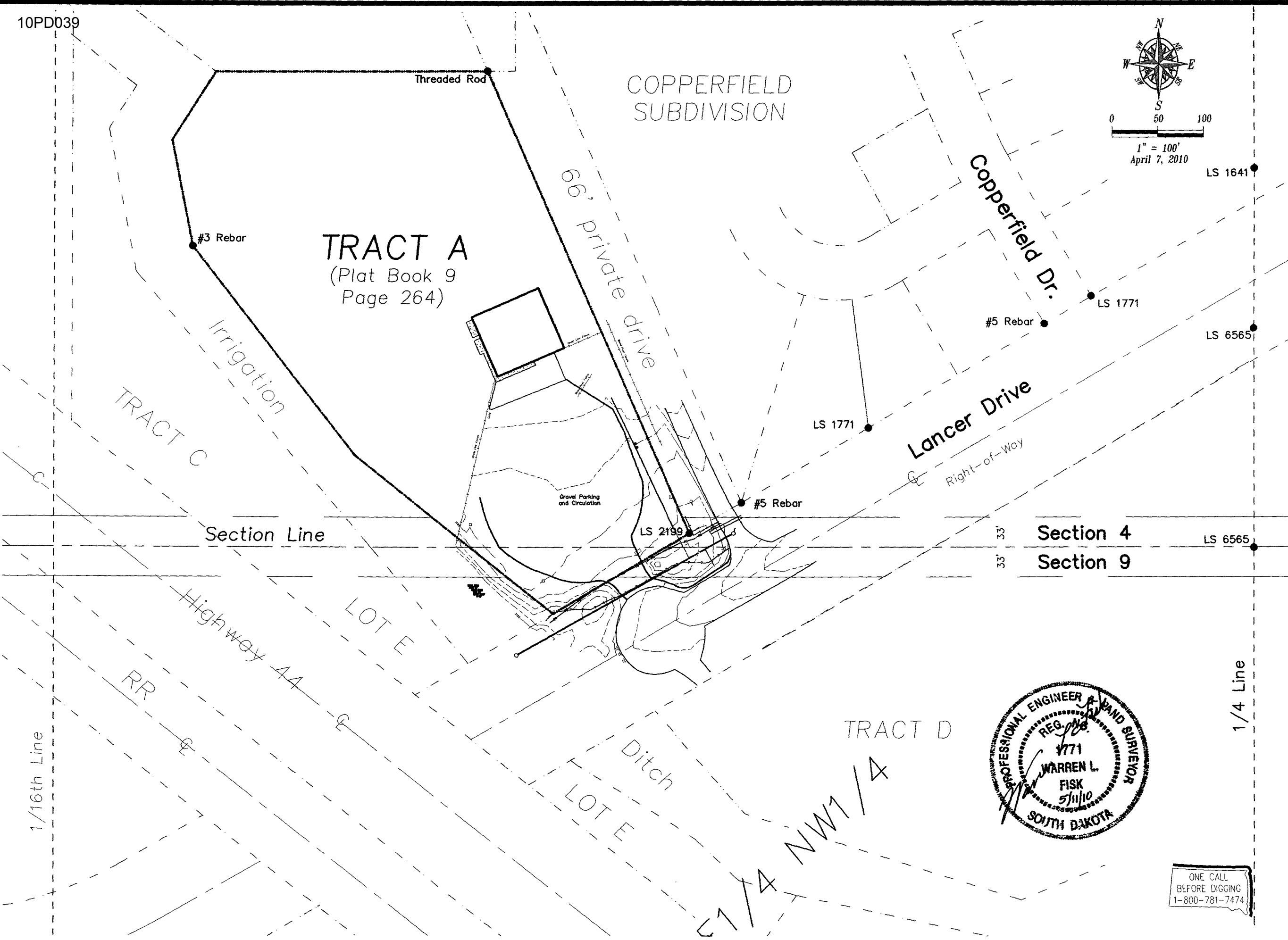
10PD039



COPPERFIELD SUBDIVISION

TRACT A

(Plat Book 9
Page 264)



Fisk Land Surveying & Consulting, Inc. Engineers, Inc.
1022 Main Street (P.O. Box 8154)
Rapid City, South Dakota 57708
(605) 348-1538
(605) 341-1112 (fx)

KOA Caretaker Planned Development
Tract A
SE 1/4 SW1/4 of Section 4 & NE1/4 NW1/4
Section 9, T1N, R8E, BHM, Rapid City,
Pennington County, South Dakota

Surveyed by:
ML,BL

Date
12/09

Drawn by:
RWF

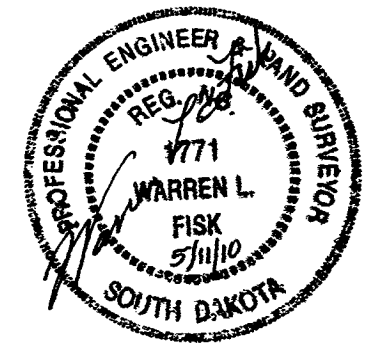
Checked by:
JF

Revisions

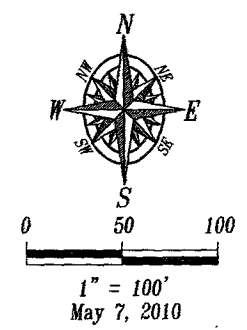
Existing Site
1"=100'

2
of
7

Project No.
09-10-06

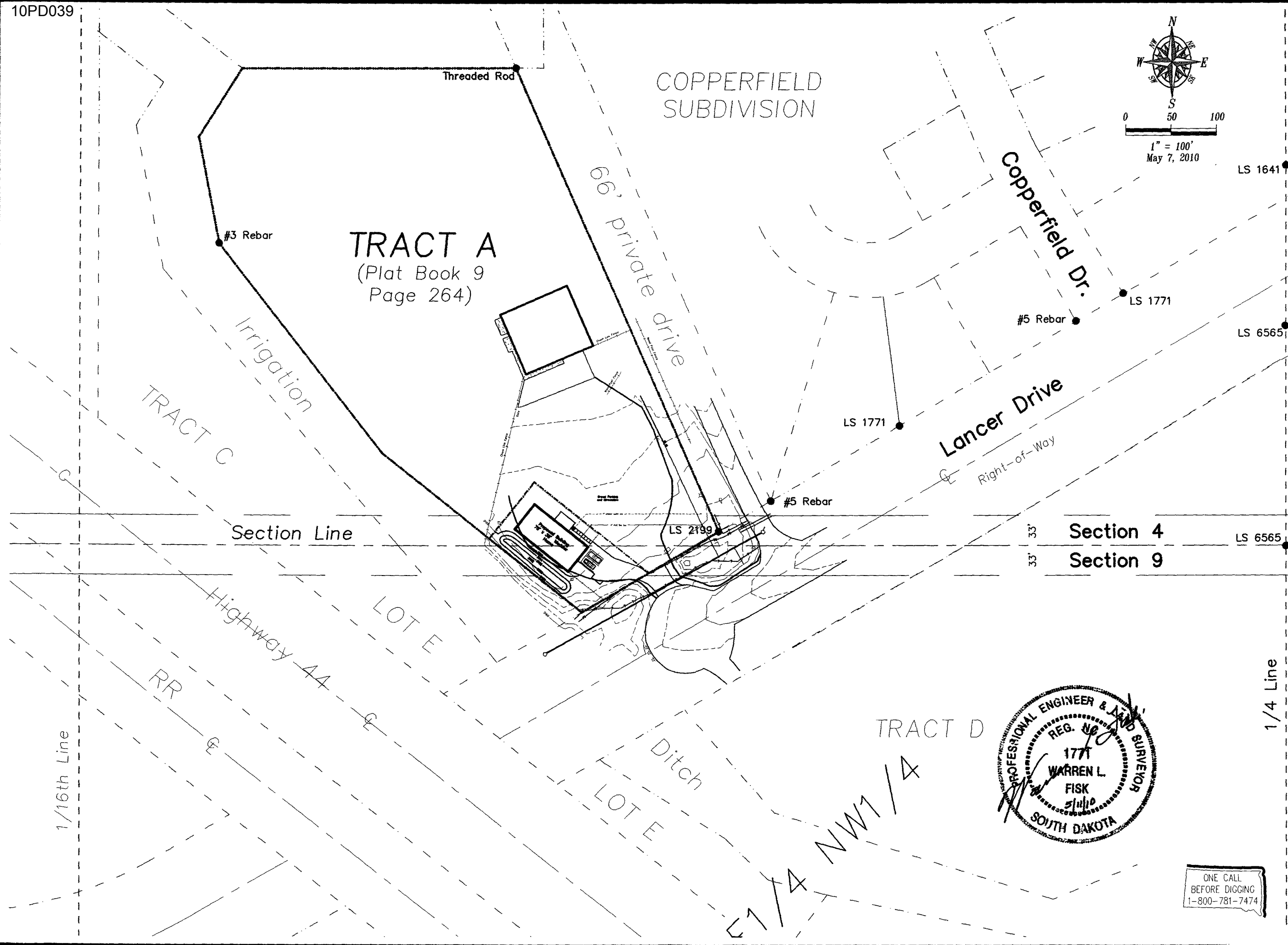


ONE CALL
BEFORE DIGGING
1-800-781-7474



COPPERFIELD SUBDIVISION

TRACT A
(Plat Book 9
Page 264)



Fisk Land Surveying & Consulting Engineers, Inc.
1022 Main Street (P.O. Box 8154)
Rapid City, South Dakota 57709
(605) 348-1538
(605) 341-1112 (fx)

KOA Caretaker Planned Development
Tract A
SE 1/4 SW1/4 of Section 4 & NE1/4 NW1/4
Section 9, T1N, R8E, BHM, Rapid City,
Pennington County, South Dakota

Surveyed by:
ML,BL

Date
12/09

Drawn by:
RWF

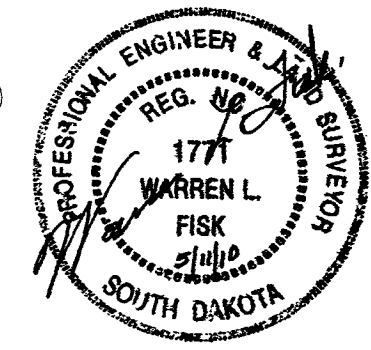
Checked by:
JF

Revisions

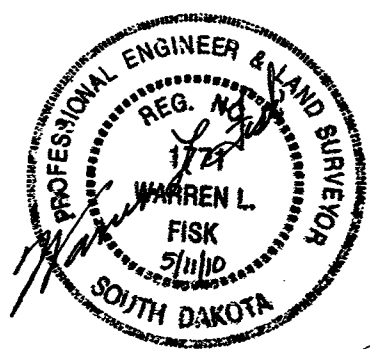
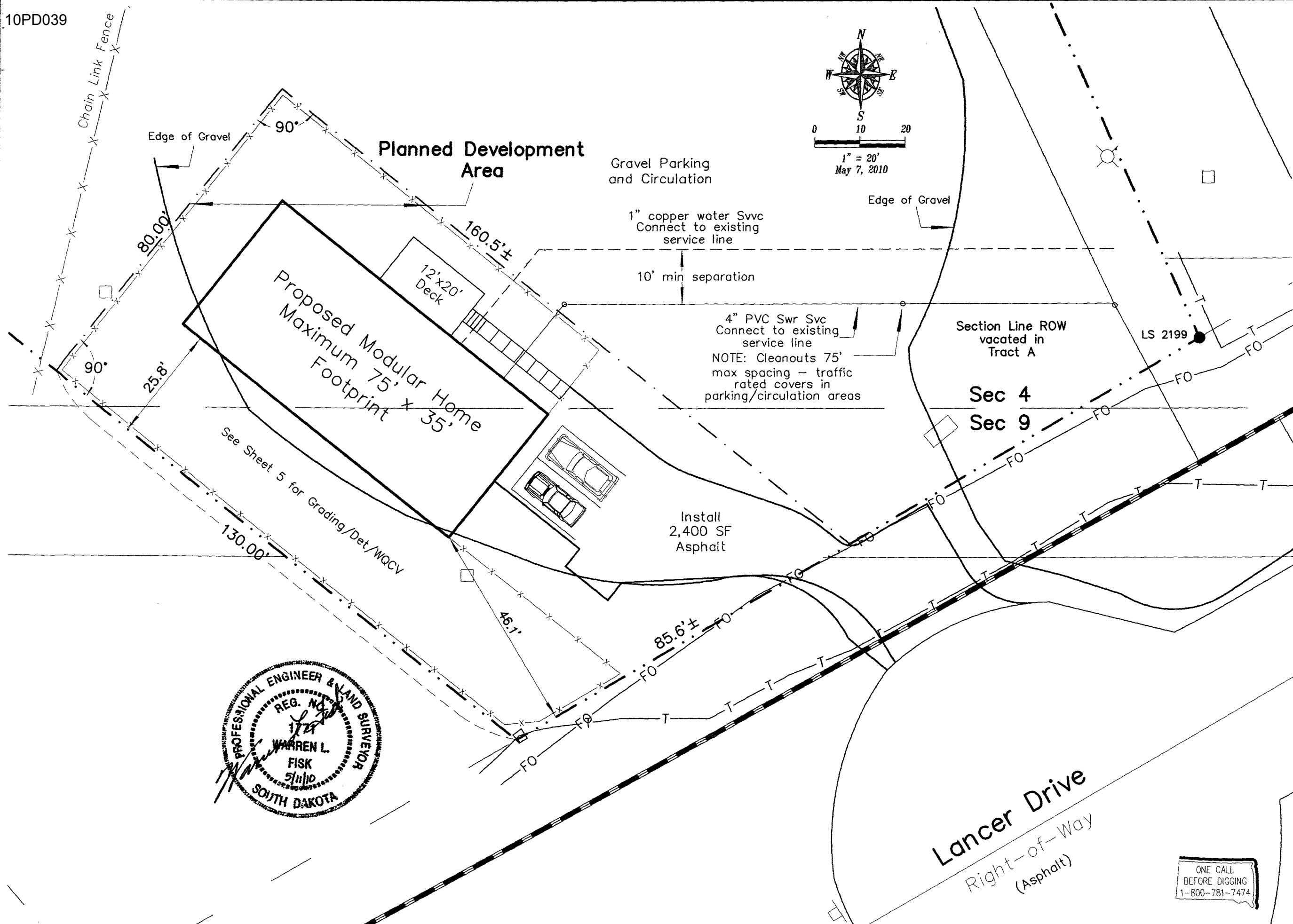
Site Map
1"=100'

3
of
7

Project No.
09-10-06



ONE CALL
BEFORE DIGGING
1-800-781-7474



Fisk Land Surveying & Consulting, Inc.
1022 Main Street (P.O. Box 8154)
Rapid City, South Dakota 57709
(605) 348-1538
(605) 341-1112 (fx)

KOA Caretaker Planned Development Tract A
SE 1/4 SW1/4 of Section 4 & NE1/4 NW1/4 Section 9, T1N, R8E, BHM, Rapid City, Pennington County, South Dakota

Surveyed by: ML,BL
Date 12/09
Drawn by: RWF
Checked by: JF
Revisions
Site Plan 1"=20'
4 of 7
Project No. 09-10-06

ONE CALL
BEFORE DIGGING
1-800-781-7474