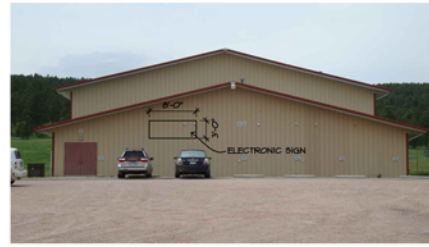
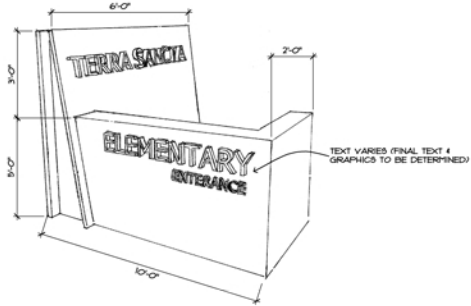
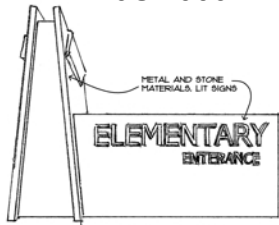
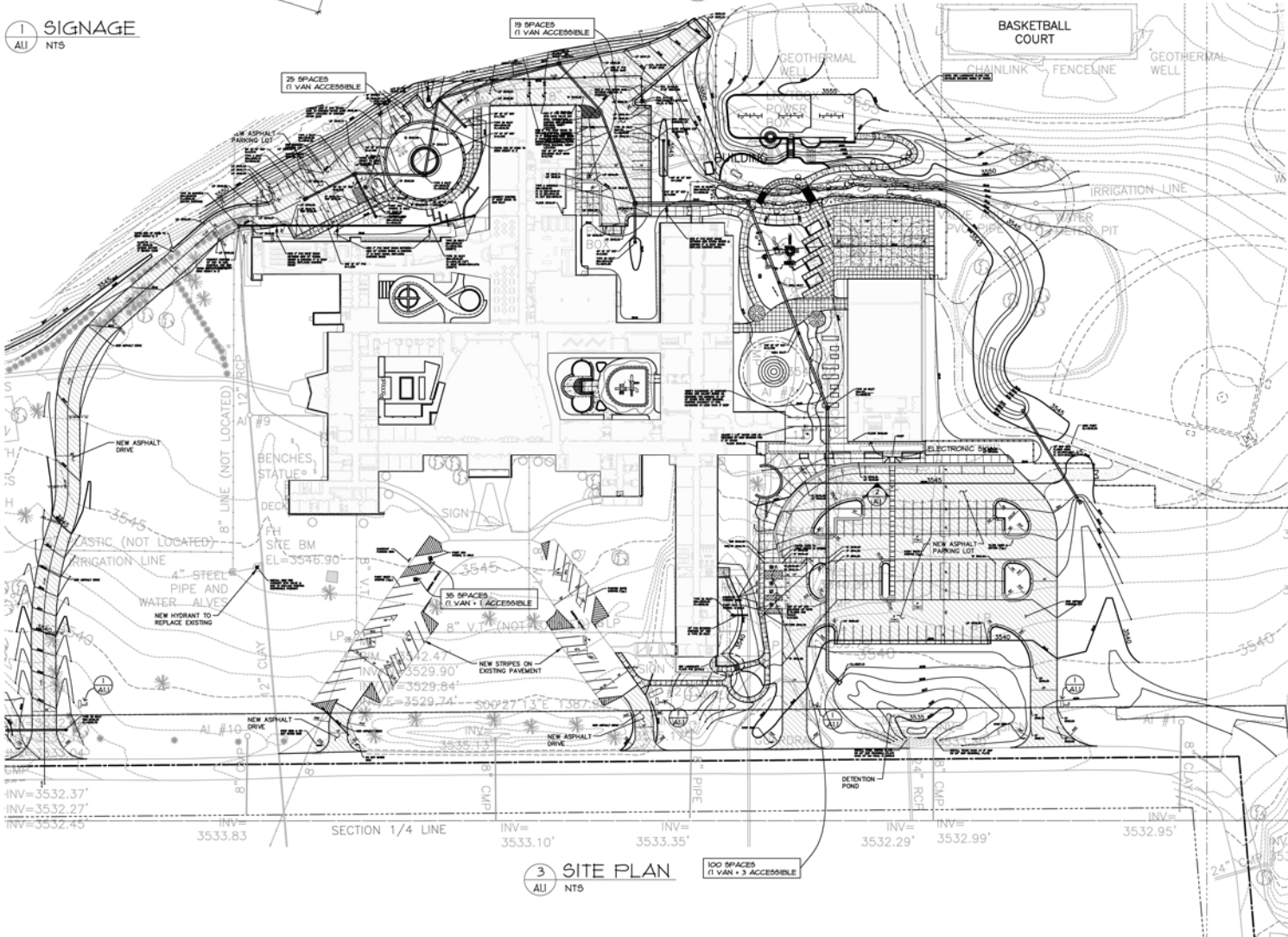


10UR009



2 ELECTRONIC SIGN
ALL NTS

1 SIGNAGE
ALL NTS



3 SITE PLAN
ALL NTS

ARCHITECT:

ARC HITECTURE
INTERNATIONAL

5808 SHERMAN LAKE ROAD
RAPID CITY, SOUTH DAKOTA 57702 TEL: 605.343.9506 WWW.ARC-INTL.COM

SENDING ARCHITECTURE TO YOUR WORLD

STRUCTURAL ENGINEER:

Albertson Engineering Inc.

3702 West Main
Suite C
Rapid City, South Dakota 57702
605.343.9506

MECHANICAL/ELECTRICAL ENGINEER:

WEST ENGINEERING INC

1750 RAND ROAD • RAPID CITY, SD 57702
PHONE: 605.343.9506 • FAX: 605.343.9506
WWW.WESTENGINEERINGINC.COM

CONTACT:

LANDSCAPE ARCHITECT:

Wyss Associates, Inc.
728 Sixth Street
Rapid City, SD 57702-0017
PHONE: 605.348.2268 FC: 605.348.8506
WWW.WYSSASSOCIATES.COM

CIVIL ENGINEER:

F M G, Inc.
Consulting Civil Engineers
3700 Sturges Road
Rapid City, SD 57702-0017
605.343.4108 FAX: 605.343.4222
WWW.FMGENGINEERING.COM

REVISIONS:

DATE: APRIL 20, 2010

PROJECT MANAGER: KELLI TREIB

PROJECT NUMBER: 2007-026

PRELIMINARY
NOT FOR
CONSTRUCTION

SUPPLEMENT TO
CONDITIONAL USE
PERMIT SUBMITTAL
AT TERRA SANCTA
RAPID CITY, SOUTH DAKOTA

SITE PLAN

A1.1