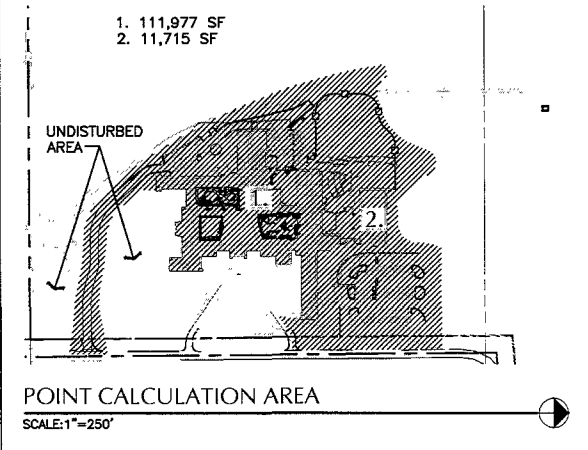
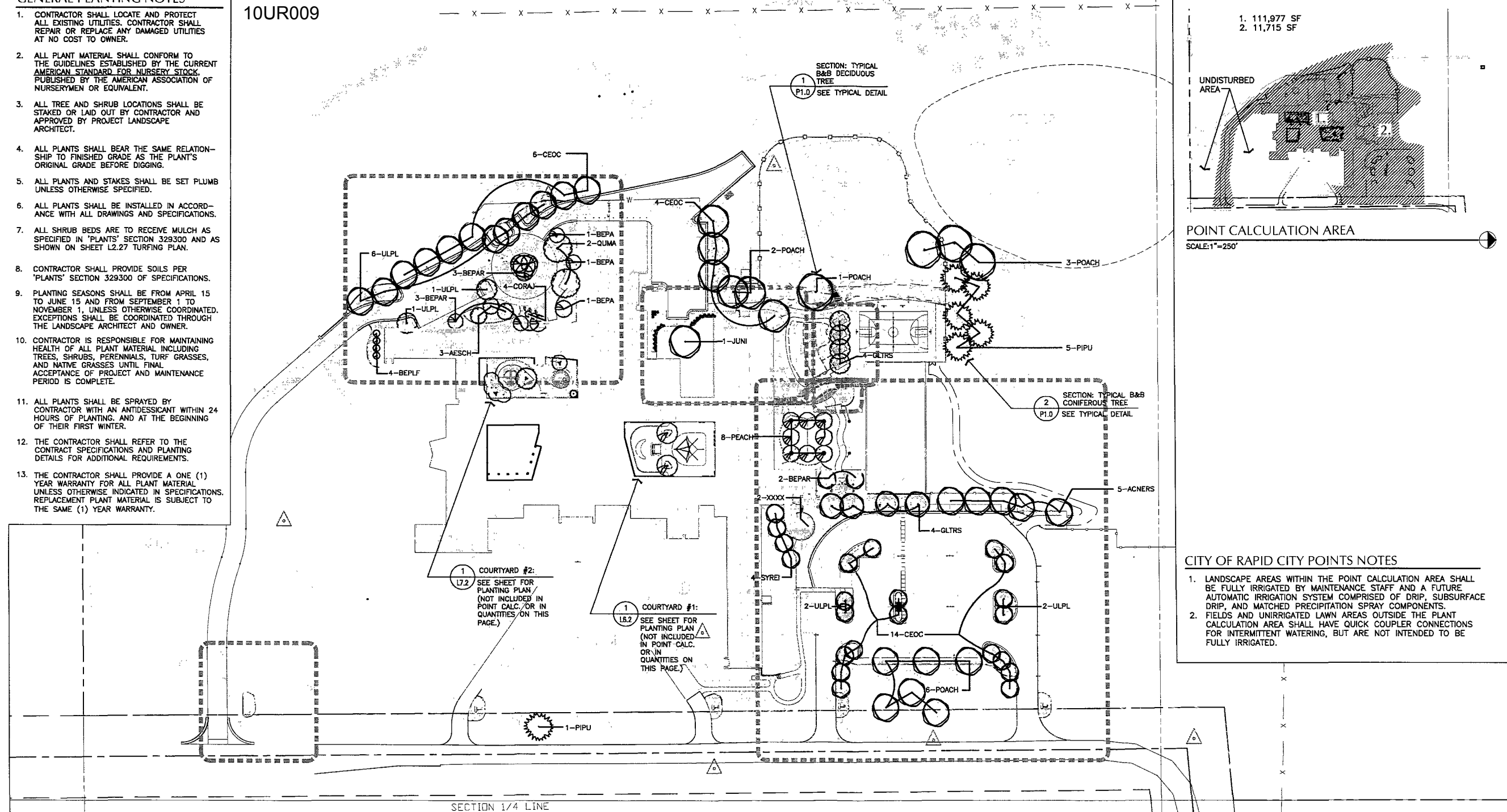


- GENERAL PLANTING NOTES**
- CONTRACTOR SHALL LOCATE AND PROTECT ALL EXISTING UTILITIES. CONTRACTOR SHALL REPAIR OR REPLACE ANY DAMAGED UTILITIES AT NO COST TO OWNER.
 - ALL PLANT MATERIAL SHALL CONFORM TO THE GUIDELINES ESTABLISHED BY THE CURRENT AMERICAN STANDARD FOR NURSERY STOCK, PUBLISHED BY THE AMERICAN ASSOCIATION OF NURSERYMEN OR EQUIVALENT.
 - ALL TREE AND SHRUB LOCATIONS SHALL BE STAKED OR LAID OUT BY CONTRACTOR AND APPROVED BY PROJECT LANDSCAPE ARCHITECT.
 - ALL PLANTS SHALL BEAR THE SAME RELATIONSHIP TO FINISHED GRADE AS THE PLANT'S ORIGINAL GRADE BEFORE DIGGING.
 - ALL PLANTS AND STAKES SHALL BE SET PLUMB UNLESS OTHERWISE SPECIFIED.
 - ALL PLANTS SHALL BE INSTALLED IN ACCORDANCE WITH ALL DRAWINGS AND SPECIFICATIONS.
 - ALL SHRUB BEDS ARE TO RECEIVE MULCH AS SPECIFIED IN 'PLANTS' SECTION 329300 AND AS SHOWN ON SHEET L2.27 TURFING PLAN.
 - CONTRACTOR SHALL PROVIDE SOILS PER 'PLANTS' SECTION 329300 OF SPECIFICATIONS.
 - PLANTING SEASONS SHALL BE FROM APRIL 15 TO JUNE 15 AND FROM SEPTEMBER 1 TO NOVEMBER 1, UNLESS OTHERWISE COORDINATED. EXCEPTIONS SHALL BE COORDINATED THROUGH THE LANDSCAPE ARCHITECT AND OWNER.
 - CONTRACTOR IS RESPONSIBLE FOR MAINTAINING HEALTH OF ALL PLANT MATERIAL INCLUDING TREES, SHRUBS, PERENNIALS, TURF GRASSES, AND NATIVE GRASSES UNTIL FINAL ACCEPTANCE OF PROJECT AND MAINTENANCE PERIOD IS COMPLETE.
 - ALL PLANTS SHALL BE SPRAYED BY CONTRACTOR WITH AN ANTIDESSICANT WITHIN 24 HOURS OF PLANTING, AND AT THE BEGINNING OF THEIR FIRST WINTER.
 - THE CONTRACTOR SHALL REFER TO THE CONTRACT SPECIFICATIONS AND PLANTING DETAILS FOR ADDITIONAL REQUIREMENTS.
 - THE CONTRACTOR SHALL PROVIDE A ONE (1) YEAR WARRANTY FOR ALL PLANT MATERIAL UNLESS OTHERWISE INDICATED IN SPECIFICATIONS. REPLACEMENT PLANT MATERIAL IS SUBJECT TO THE SAME (1) YEAR WARRANTY.

10UR009



- CITY OF RAPID CITY POINTS NOTES**
- LANDSCAPE AREAS WITHIN THE POINT CALCULATION AREA SHALL BE FULLY IRRIGATED BY MAINTENANCE STAFF AND A FUTURE AUTOMATIC IRRIGATION SYSTEM COMPRISED OF DRIP, SUBSURFACE DRIP, AND MATCHED PRECIPITATION SPRAY COMPONENTS.
 - FIELDS AND UNIRRIGATED LAWN AREAS OUTSIDE THE POINT CALCULATION AREA SHALL HAVE QUICK COUPLER CONNECTIONS FOR INTERMITTENT WATERING, BUT ARE NOT INTENDED TO BE FULLY IRRIGATED.

EXISTING UTILITIES LOCATIONS:
 THE LOCATIONS OF EXISTING UNDERGROUND UTILITIES ARE SHOWN IN AN APPROXIMATE WAY ONLY AND HAVE NOT BEEN INDEPENDENTLY VERIFIED BY THE OWNERS OR ITS REPRESENTATIVE. THE CONTRACTOR SHALL DETERMINE THE EXACT LOCATION OF ALL EXISTING UTILITIES BEFORE COMMENCING WORK, AND AGREES TO BE FULLY RESPONSIBLE FOR ANY AND ALL DAMAGES WHICH MIGHT BE OCCASIONED BY THE CONTRACTOR'S FAILURE TO EXACTLY LOCATE AND PRESERVE ANY AND ALL UNDERGROUND UTILITIES. CONTACT THE SOUTH DAKOTA ONE CALL NOTIFICATION CENTER 2025 CENTRE POINT BOULEVARD #310 MENDOTA HEIGHTS, MN 55120 1-800-781-7474

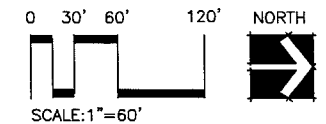
CITY OF RAPID CITY POINTS COMPLIANCE

DEVELOPED AREA	469,901 SQ. FT.
STRUCTURE SQUARE FOOTAGE	123,692 SQ. FT.
LANDSCAPE POINTS REQUIRED	346,209 POINTS

DESCRIPTION	UNITS/POINTS GIVEN	TOTAL POINTS
TURF AREA	1,404 S.Y. @ 10 PTS / S.Y.	14,030 PTS.
LARGE DECIDUOUS TREES—SEE LEGEND (L)	51 @ 2000 PTS EA.	102,000 PTS.
MEDIUM DECIDUOUS TREES—SEE LEGEND (M)	16 @ 1000 PTS EA.	16,000 PTS.
SMALL DECIDUOUS TREES—SEE LEGEND (S)	8 @ 500 PTS EA.	4,000 PTS.
CONIFEROUS TREES	6 @ 2000 PTS EA.	12,000 PTS.
DECIDUOUS SHRUBS	535 @ 250 PTS EA.	133,750 PTS.
GROUNDCOVER	776 S.Y. @ 100 PTS/S.Y.	77,600 PTS.
POINTS PROVIDED		359,380 PTS.

TREE PLANTING SCHEDULE

QTY	SYMBOL	COMMON NAME	BOTANICAL NAME	SIZE	HEIGHT	COMMENTS	SIZE
DECIDUOUS TREES							
4	SYREI	TREE LILAC	<i>SYRINGA RETICULATA 'IVORY SILK'</i>	1" CAL		#15 MINIMUM	S
8		PEACH (2) VARIETIES: (4) EACH:	<i>PRUNUS PERSICA 'ELBERTA'</i> <i>PRUNUS PERSICA 'SCARLET PRINCE'</i>	4-5" SPREAD	5-10' HGT.	#15 OR AS AVAILABLE	S
5	ACNERS	RED SENSATION MAPLE	<i>ACER NEGUNDO 'RED SENSATION'</i>	1½"-2" CAL	10-12' HGT.	B&B, SPACE PER PLANS	L
3	AESCH	HOMESTEAD BUCKEYE	<i>AESCULUS X 'HOMESTEAD'</i>	1½" CAL	10-12' HGT.	B&B, SPACE PER PLANS	M
2	BEPA	PAPER BIRCH	<i>BETULA PAPIRYFERA</i>	1½" CAL	10-12' HGT.	B&B, SPACE PER PLANS	M
8	BEPAR	RENAISSANCE REFLECTION PAPER BIRCH	<i>BETULA PAPIRYFERA 'RENCI'</i>	1½" CAL	10-12' HGT.	B&B, SPACE PER PLANS	M
4	BEPLF	DAKOTA PINNACLE ASIAN WHITE BIRCH	<i>BETULA PLATYPHYLLA 'FARGO'</i>	1½" CAL	10-12' HGT.	B&B, SPACE PER PLANS	M
10	CEOC	COMMON HACKBERRY	<i>CELTIS OCCIDENTALIS</i>	1½"-2" CAL	10-12' HGT.	B&B, SPACE PER PLANS	L
4	CORAJ	SNOW MANTLE GRAY DOGWOOD	<i>CORNUS RACEMOSA 'JADE'</i>	1" CAL	8-10' HGT.	#15 MINIMUM	S
8	GLTRS	SHADEMASTER® HONEYLOCUST	<i>GLEDTISIA TRACANTHOS 'SHADEMASTER'</i>	1½"-2" CAL	10-12' HGT.	B&B, SPACE PER PLANS	L
1	JUNI	BLACK WALNUT	<i>JUGLANDS NIGRA</i>	1½"-2" CAL	10-12' HGT.	B&B, SPACE PER PLANS	L
12	POACH	HIGHLAND COTTONWOOD	<i>POPULUS ACCUMINATA X SARGENTII 'HIGHLAND'</i>	1½" CAL	10-12' HGT.	B&B, SPACE PER PLANS	L
2	QUMA	BUR OAK	<i>QUERCUS MACROCARPA</i>	1½" CAL	10-12' HGT.	B&B, SPACE PER PLANS	L
12	ULPL	VANGUARD ELM	<i>ULMAS 'PLAINSMAN'</i>	1½"-2" CAL	10-12' HGT.	B&B, SPACE PER PLANS	L
CONIFEROUS TREES							
6	PIPU	BLACK HILLS SPRUCE	<i>PICEA PUNGENS 'BLACK HILLS'</i>	3-4" SPREAD	5' HGT.	B&B	L



ARCHITECT:
ARC H I T E C T U R E
 I N T E R N A T I O N A L
 5908 SHERIDAN LAKE ROAD
 RAPID CITY, SOUTH DAKOTA 57702 TEL: 605-341-2066 FAX: 605-341-3651
 WWW.ARCATK.COM
BRINGING ARCHITECTURE TO YOUR WORLD

STRUCTURAL ENGINEER:
 3202 West Main
 Suite C
 Rapid City, South Dakota 57702
 605.343.9606
Albertson Engineering Inc.

MECHANICAL/ELECTRICAL ENGINEER:
WPE WEST PLAINS ENGINEERING, INC.
 1750 RAND ROAD ■ RAPID CITY, SD 57702
 PHONE: (605) 348-7455 ■ FAX: (605) 348-9445
 WWW.WESTPLAINSENGINEERING.COM
 RAPID CITY, SD ■ BOSTON, MA ■ CHICAGO, IL ■ DENVER, CO

LANDSCAPE ARCHITECT:
Wyss Associates, Inc.
 Landscape Architecture - Golf Course Architecture - Parks & Recreation Design
 728 South Street, Rapid City, South Dakota 57701-3570 605.348.2289 Fax 605.348.6506
 email: info@wyssassociates.com web: www.wyssassociates.com

CIVIL ENGINEER:
F M G, Inc.
 Consulting Civil Engineers
 3700 Sturgis Road
 Rapid City, SD 57702-0317
 (605) 342-4105 FAX (605) 342-4222
 www.fmgengineering.com

FOOD SERVICE CONSULTANT:
ROGER KRUSE ASSOC.
 food facilities planning
 Omaha, NE
 © COPYRIGHT ROGER KRUSE ASSOCIATES

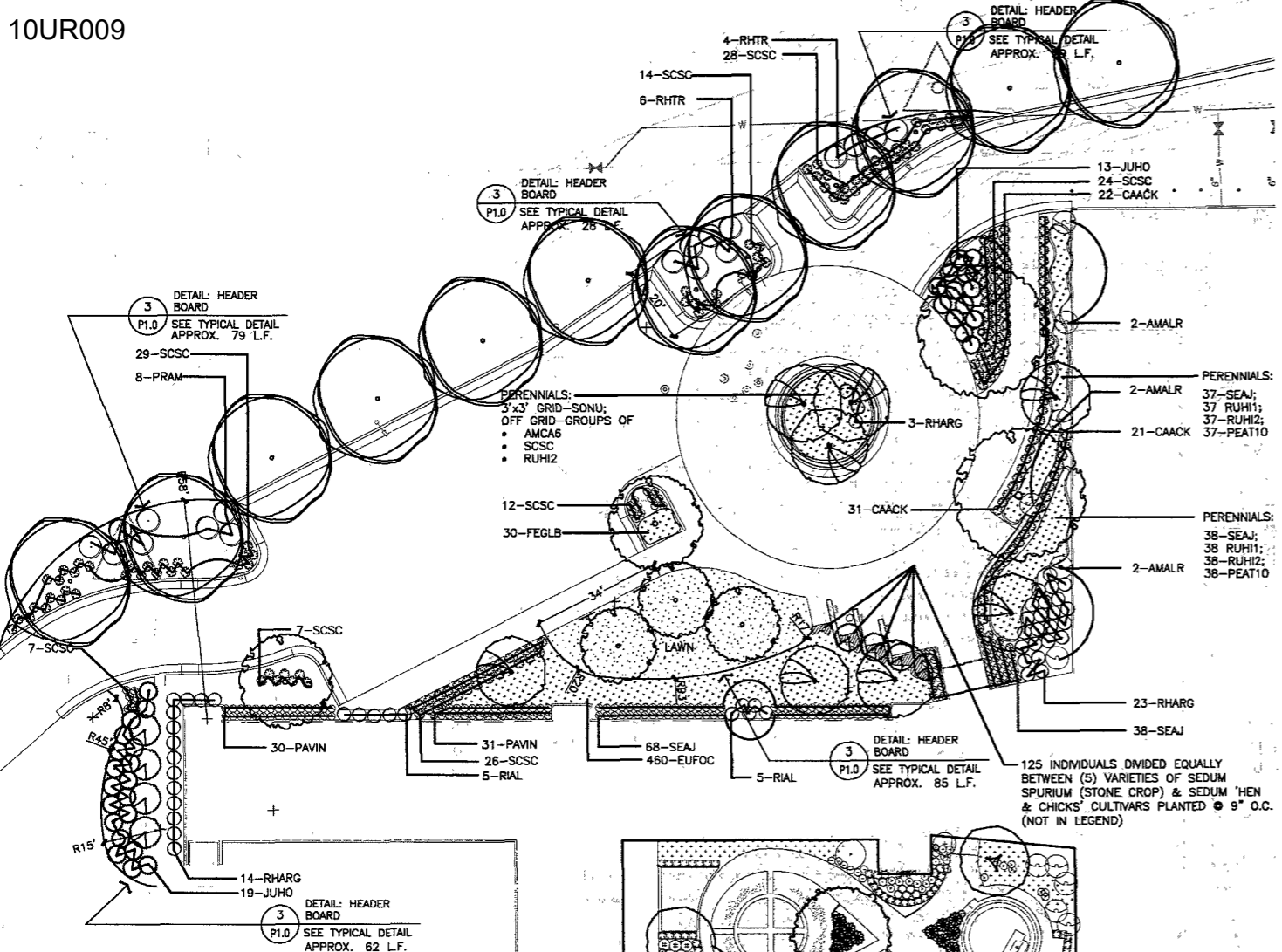
DATE: JUNE 9, 2010
 PROJECT MANAGER: MATTHEW D. FRIDELL
 PROJECT NUMBER: 2007-026

PRELIMINARY
 Not for Construction
 (C.U.P. Submittal)

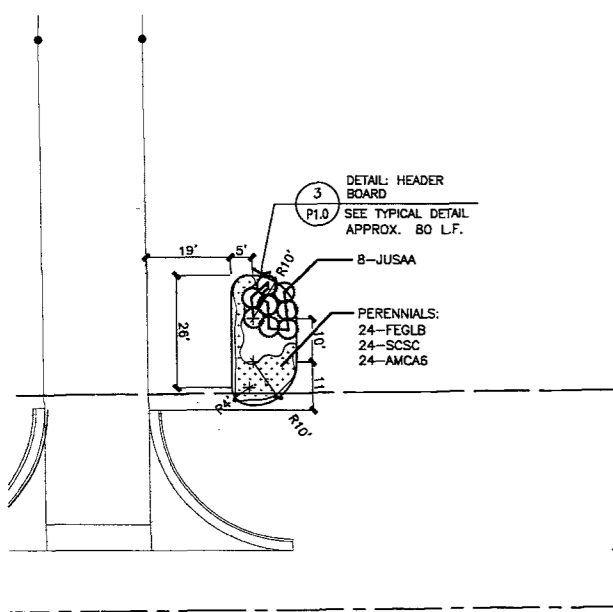
TERRA SANCTA
SPIRITUAL LIFE
CENTER
 RAPID CITY, SOUTH DAKOTA

OVERALL PLANTING PLAN

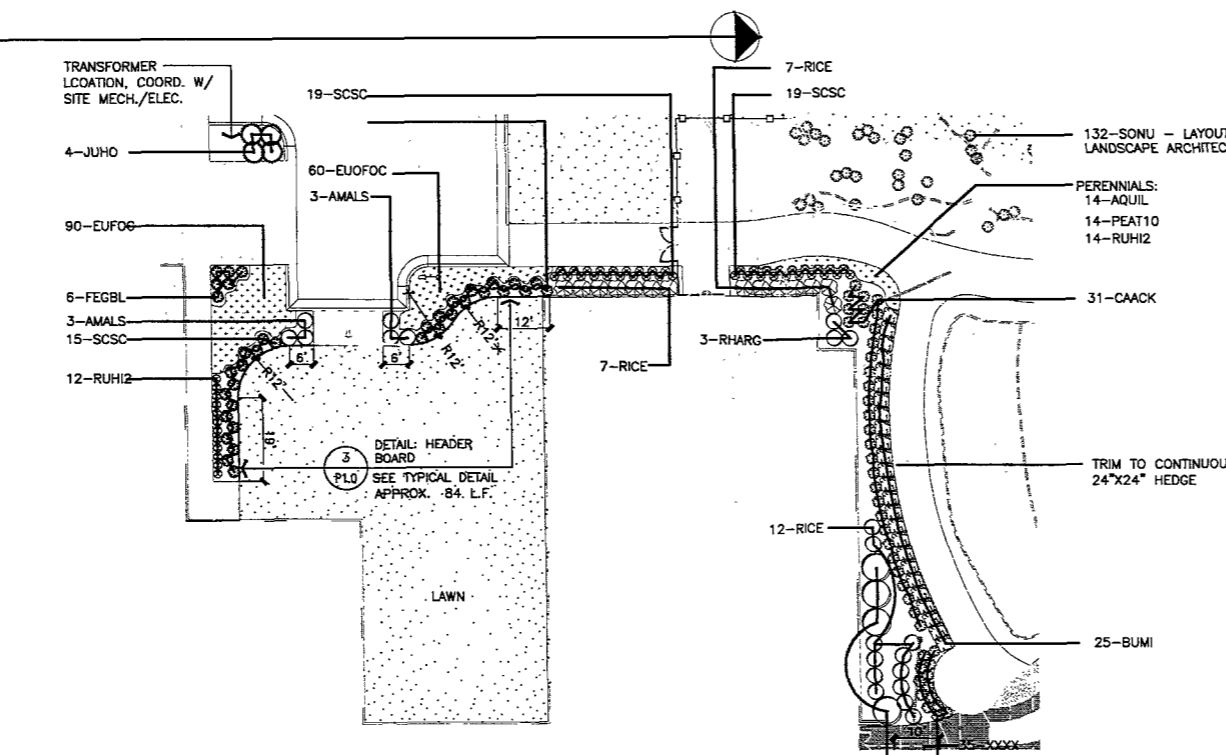
L4.1



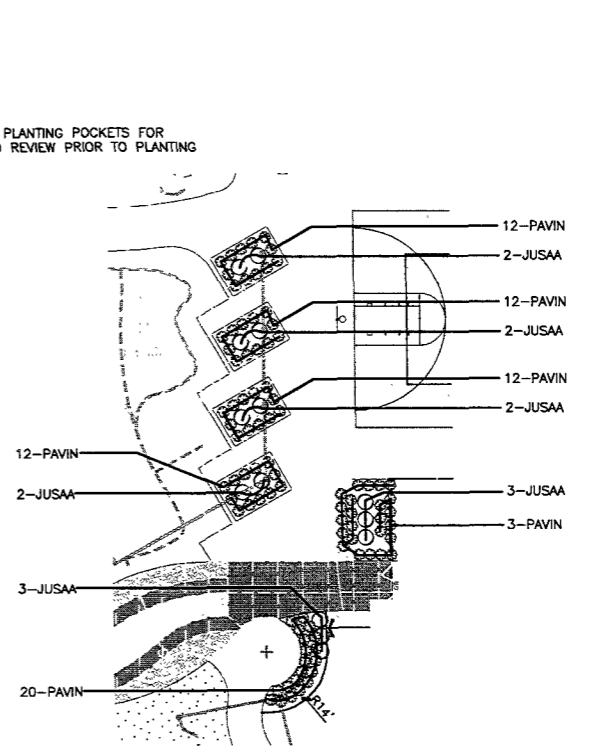
1 SPIRITUAL LIVING CENTER ENTRY COURT
SCALE: 1"=20'



2 SPIRITUAL LIVING CENTER ENTRANCE
SCALE: 1"=20'



3 ENLARGED PLANTING PLAN
SCALE: 1"=20'



4 ENLARGED PLANTING PLAN
SCALE: 1"=20'

SHRUB AND PERENNIAL PLANTING SCHEDULE

QTY.	SYMBOL	COMMON NAME	BOTANICAL NAME	SIZE	COMMENTS
DECIDUOUS SHRUBS					
6	AMALR	REGENT JUNE BERRY	AMELANCHIER ALNIFOLIA 'REGENT'	#2 (2 GAL.)	SPACE PER PLANS
10	AMALS	SASKATOON SERVICE BERRY	AMELANCHIER ALNIFOLIA	#2 (2 GAL.)	SPACE PER PLANS
41	BUMI	WINTER GREEN BOXWOOD	BUXUS MICROPHYLLA	#1 (1 GAL.)	SPACE PER PLANS
14	HYPAW	WHITE MOTH HYDRANGEA	HYDRANGEA PANICULATA 'WHITE MOTH'	#1 (1 GAL.)	SPACE PER PLANS
49	PRAM	AMERICAN PLUM	PRUNUS AMERICANA	#3 (3 GALLON)	SPACE PER PLANS
117	RHARG	GRO-LOW FRAGRANT SUMAC	RHUS AROMATICA 'GRO-LOW'	#1 (1 GAL.)	SPACE PER PLANS
10	RHTR	THREELEAF SUMAC	RHUS TRILOBATA	#1 (1 GAL.)	SPACE PER PLANS
37	RIAL	ALPINE CURRANT	RIBES ALPINUM	#2 (2 GAL.)	SPACE PER PLANS
13	RIAU	YELLOW FLOWERING CURRANT	RIBES AUREUM	#2 (2 GAL.)	SPACE PER PLANS
63	RICE	WAX CURRANT	RIBES CEREUUM	#2 (2 GAL.)	SPACE PER PLANS
550	EUFOC	EUONYMUS FORTUNEI 'COLORATUS'	PURPLE WINTERCREEPER	#1 (1 GAL.)	3' O.C.
CONIFEROUS SHRUBS					
101	JUHO	CREeping JUNIPER	JUNIPERUS HORIZONTALIS	#2 (2 GAL.)	SPACE PER PLANS
54	JUSAA	ARCADIA JUNIPER	JUNIPERUS SABINA 'ARCADIA'	#2 (2 GAL.)	SPACE PER PLANS
GRASSES					
185	PAVIN	SWITCHGRASS	PANICUM VIRGATUM 'SHENANDOAH'	#1 (1 GAL.)	SPACE PER PLANS
258	CAACK	FEATHER REED GRASS	CALAMAGROSIS ACUTIFOLIA 'KARL FOERSTER'	#1 (1 GAL.)	SPACE PER PLANS
205	FEGLB	BOULDER BLUE FESCUE	FESTUCA GLAUCA 'BOULDER BLUE'	#SP4	SPACE PER PLANS
519	RHARG	LITTLE BLUESTEM	SCHIZACHYRIUM SCOPARIUS	#SP4	SPACE PER PLANS
190	SONU	INDIAN GRASS	SORGHASTRUM NUTANS	#1 (1 GAL.)	SPACE PER PLANS
PERENNIAL/FORBES					
14	AQUIL	COLUMBINE	AQUILEGIA	#SP5	SPACE PER PLANS
213	AMCA6	LEADPLANT AMORPHA	AMORPHA CANESCENS	#SP5	SPACE PER PLANS
119	PEAT10	RUSSIAN SAGE	PEROVSKIA ATRIPLICIFOLIA	#SP5	SPACE PER PLANS
169	RUH12	BLACK EYED SUSAN	RUDBECKIA HIRTA	#SP5	SPACE PER PLANS
93	RUH11	IRISH EYES RUDBECKIA	RUDBECKIA HIRTA 'IRISH EYES'	#SP5	SPACE PER PLANS
189	SEAJ	AUTUMN JOY	SEDUM 'AUTUMN JOY'	#SP5	SPACE PER PLANS

ARCHITECT:
ARC HITECTURE INTERNATIONAL
5808 SHERIDAN LAKE ROAD
RAPID CITY, SOUTH DAKOTA 57702
TEL: 605-341-2266 FAX: 605-341-3661
www.ARCtel.com
BRINGING ARCHITECTURE TO YOUR WORLD

STRUCTURAL ENGINEER:
Albertson Engineering Inc.
3202 West Main
Suite C
Rapid City, South Dakota 57702
605.343.8606

MECHANICAL/ELECTRICAL ENGINEER:
WEST PLAINS ENGINEERING, INC.
1750 RAND ROAD ■ RAPID CITY, SD 57702
PHONE: (605) 340-7425 ■ FAX: (605) 340-9445
www.westplainsengineering.com
RAPID CITY, SD ■ BOULDER, CO ■ GARDEN CITY, MO ■ CEDAR RAPIDS, IA

LANDSCAPE ARCHITECT:
Wyss Associates, Inc.
Landscape Architecture • Civil/Construction Architecture • Parks & Recreation Design
728 Sixth Street, Rapid City, South Dakota 57701-3870 605-348-2288 Fax 605-348-8208
email: info@wyssassociates.com web: www.wyssassociates.com

CIVIL ENGINEER:
F M G, Inc.
Consulting Civil Engineers
3700 Sturgis Road
Rapid City, SD 57702-0917
(605) 342-4105 FAX (605) 342-4222
www.fmgengineering.com

FOOD SERVICE CONSULTANT:
ROGER KRUSE ASSOC.
food facilities planning
Omaha, NE

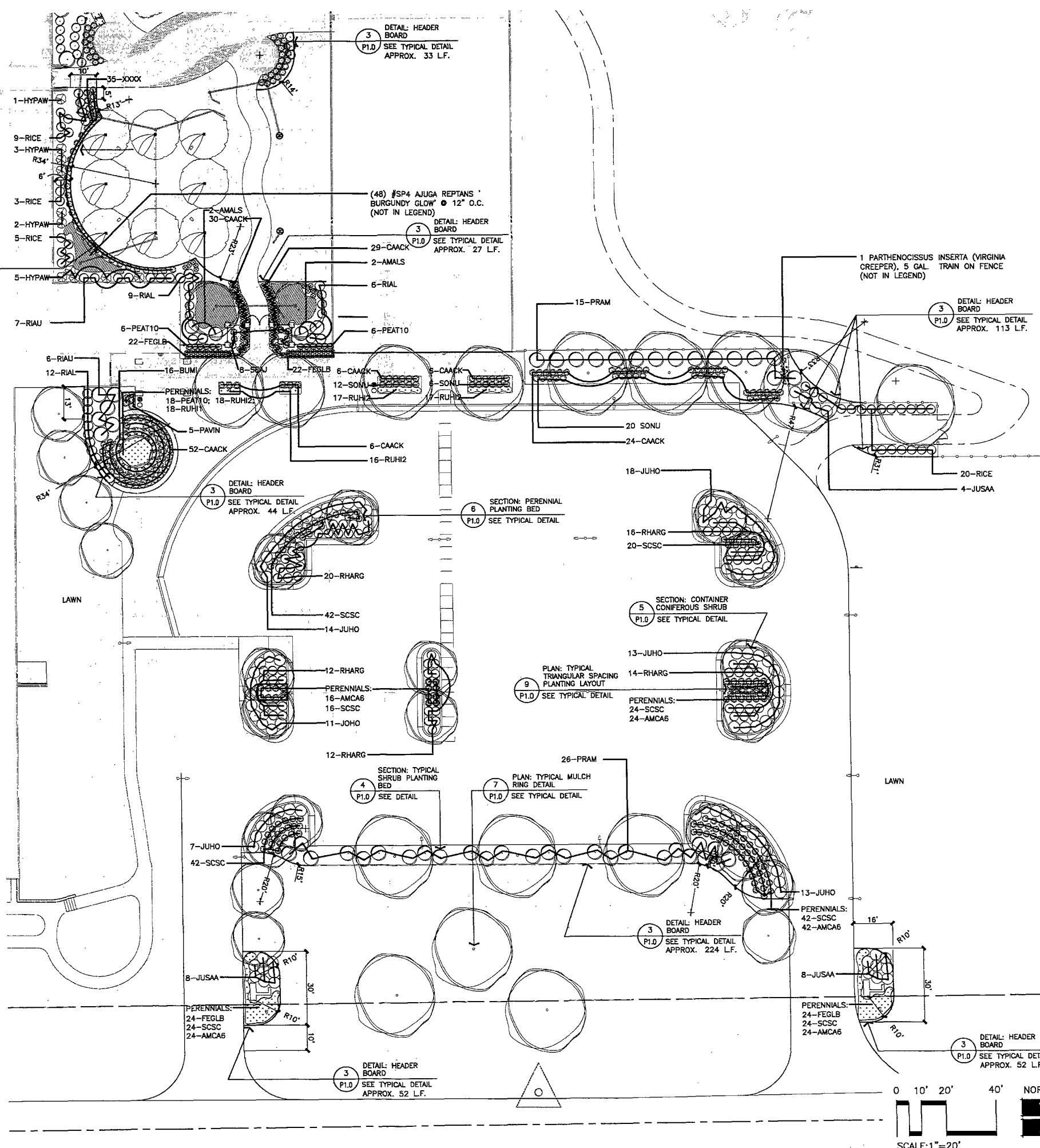
DATE: JUNE 9, 2010
PROJECT MANAGER: MATTHEW D. FRIDELL
PROJECT NUMBER: 2007-026

PRELIMINARY
Not for Construction
(C.U.P. Submittal)

TERRA SANCTA
SPIRITUAL LIFE
CENTER
RAPID CITY, SOUTH DAKOTA

SPIRITUAL LIVING CENTER
PLANTING PLAN

L4.2



ARCHITECT:
ARC HITECTURE INTERNATIONAL
 5805 SHERIDAN LAKE ROAD
 RAPID CITY, SOUTH DAKOTA 57702 TEL: 605-341-2066 FAX: 605-341-3651
 www.ARCatEK.com
BRINGING ARCHITECTURE TO YOUR WORLD

STRUCTURAL ENGINEER:

 3202 West Main Suite C
 Rapid City, South Dakota 57702
 805.343.9806
Albertson Engineering Inc.

MECHANICAL/ELECTRICAL ENGINEER:

WEST PLAINS ENGINEERING, INC.
 1759 RAND ROAD • RAPID CITY, SD 57702
 PHONE: (605) 348-7465 • FAX: (605) 348-9446
 www.westplainsengineering.com
 WPE CITY, SD • SOUTH DAKOTA • MINNESOTA • WISCONSIN

LANDSCAPE ARCHITECT:

Wyss Associates, Inc.
 Landscape Architecture - Golf Course Architecture - Parks & Recreation Design
 728 5th Street Rapid City, South Dakota 57701-3670 605.348.2289 Fax: 605.348.8508
 email: info@wyssassociates.com web: www.wyssassociates.com

CIVIL ENGINEER:

FMG, Inc.
 Consulting Civil Engineers
 3700 Sturgis Road
 Rapid City, SD 57702-0317
 (605) 342-4105 FAX (605) 342-4222
 www.fmgengineering.com

FOOD SERVICE CONSULTANT:
ROGER KRUSE ASSOC.
 food facilities planning
 Omaha, NE
© COPYRIGHT ROGER KRUSE ASSOCIATES

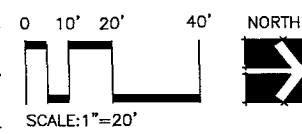
DATE: JUNE 9, 2010
 PROJECT MANAGER: MATTHEW D. FRIDELL
 PROJECT NUMBER: 2007-026

PRELIMINARY
 Not for Construction
 (C.U.P. Submittal)

TERRA SANCTA SPIRITUAL LIFE CENTER
 RAPID CITY, SOUTH DAKOTA


PARKING & SCHOOL ENTRY
 PLANTING PLAN

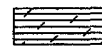
L4.3




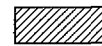
KEY - SEE SPECIFICATIONS

 SEED: WILDFLOWER MEADOW GRASSES & SEEDED LAWN MIX (51,325 SF)

 SEED: LAWN MIX (5.15 ACRES)

 SODDED LAWN AREA (5,570 SF)

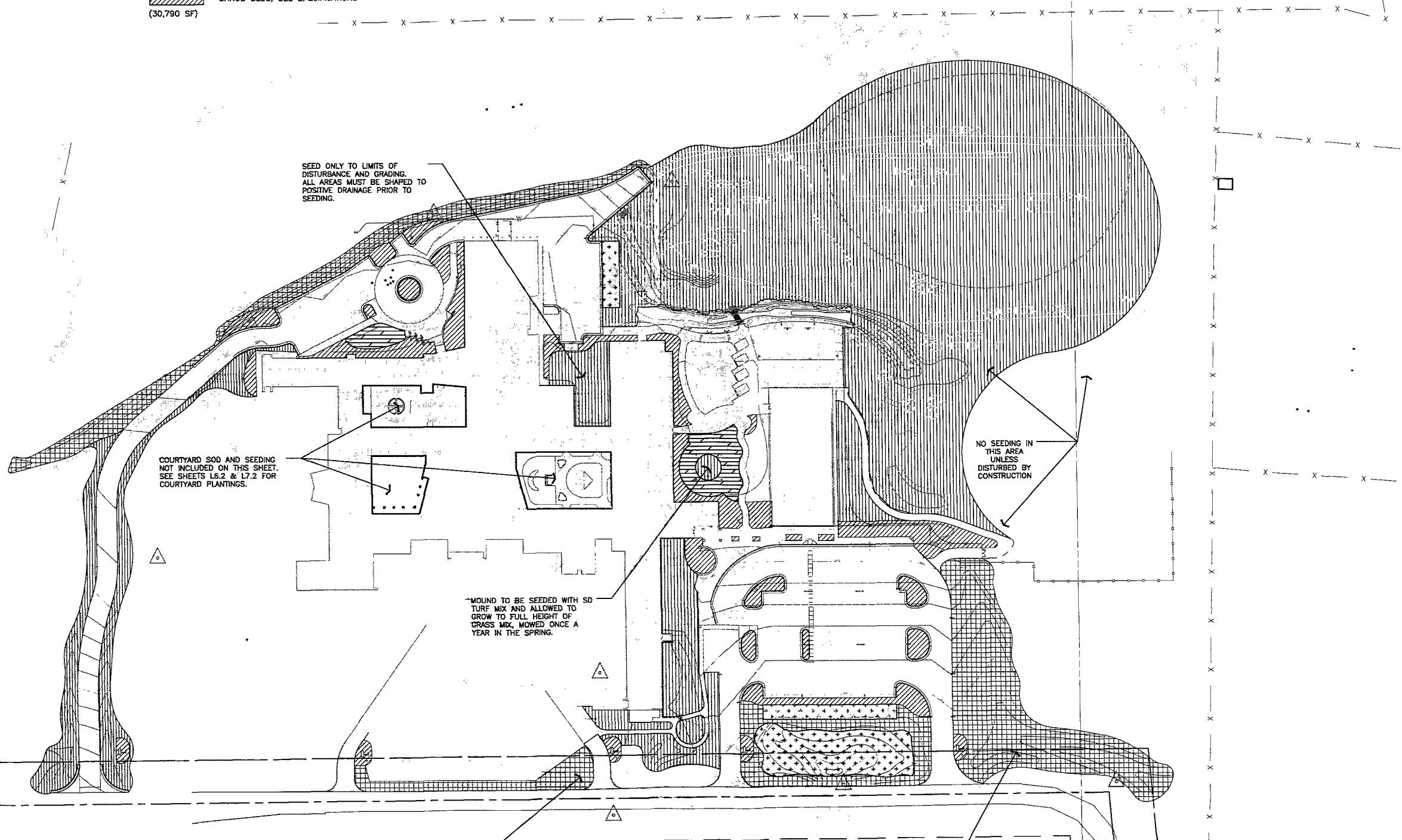
 SEED: BIORETENTION AREA (12,000 SF)

 PLANTING SOILS AT ISLANDS AND PERENNIAL/SHRUB BEDS, SEE SPECIFICATIONS (30,790 SF)

GENERAL NOTES:

1. ALL SEED TO BE DELIVERED AND TAGGED IN CERTIFIED BAGS AS SPECIFIED.
2. ALL AREAS THAT ARE TRENCHED FOR UTILITIES OUTSIDE OF AREAS INDICATED HEREIN SHALL BE SEEDED WITH APPROPRIATE SEED. COORDINATE WITH SEEDING CONTRACTOR.

SECTION 1/16TH LINE



SEED ONLY TO LIMITS OF DISTURBANCE AND GRADING. ALL AREAS MUST BE SHAPED TO POSITIVE DRAINAGE PRIOR TO SEEDING.

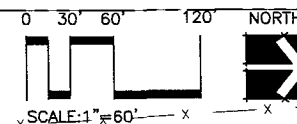
COURTYARD SOD AND SEEDING NOT INCLUDED ON THIS SHEET. SEE SHEETS L6.2 & L7.2 FOR COURTYARD PLANTINGS.

NO SEEDING IN THIS AREA UNLESS DISTURBED BY CONSTRUCTION

MOUND TO BE SEEDED WITH SD TURF MIX AND ALLOWED TO GROW TO FULL HEIGHT OF GRASS MIX. MOWED ONCE A YEAR IN THE SPRING.

SEED ONLY TO LIMITS OF DISTURBANCE AND GRADING. ALL AREAS MUST BE SHAPED TO POSITIVE DRAINAGE PRIOR TO SEEDING.


WILDFLOWER MIX AREAS SHALL BE ALLOWED TO FLOWER PRIOR TO MOWING EACH YEAR.



SW1/4-NE1/4

ARCHITECT:

ARCHITECTURE INTERNATIONAL
 5808 SHERIDAN LAKE ROAD, RAPID CITY, SOUTH DAKOTA 57702
 TEL: 605-341-2566 FAX: 605-341-3651
 BRINGING ARCHITECTURE TO YOUR WORLD

STRUCTURAL ENGINEER:

 3202 West Main, Suite C, Rapid City, South Dakota 57702
 605.343.9806
Albertson Engineering Inc.

MECHANICAL/ELECTRICAL ENGINEER:

 WEST PLAINS ENGINEERING, INC.
 1750 RAND ROAD, RAPID CITY, SD 57702
 PHONE: (605) 348-7455 FAX: (605) 348-9445
 www.westplainsengineering.com
 RAPID CITY, SD ■ BOLD FALLS, SD ■ CASPER, WY ■ CEDAR RAPIDS, IA

LANDSCAPE ARCHITECT:

Wyss Associates, Inc.
 Landscape Architecture • Golf Course Architecture • Parks & Recreation Design
 728 Sixth Street, Rapid City, South Dakota 57701-3870 605.348.2288 Fax 605.348.6000
 email: info@wyssassociates.com web: www.wyssassociates.com

CIVIL ENGINEER:

F M G, Inc.
 Consulting Civil Engineers
 3700 Sturgis Road, Rapid City, SD 57702-0317
 (605) 342-4105 FAX (605) 342-4222
 www.fmgengineering.com

FOOD SERVICE CONSULTANT:
ROGER KRUSE ASSOC.
 food facilities planning
 Omaha, NE
© COPYRIGHT 2007 ROGER KRUSE ASSOCIATES

DATE: JUNE 9, 2010

PROJECT MANAGER: MATTHEW D. FRIDELL

PROJECT NUMBER: 2007-026

PRELIMINARY
 Not for Construction
 (C.U.P. Submittal)

TERRA SANCTA
SPIRITUAL LIFE
CENTER
 RAPID CITY, SOUTH DAKOTA

OVERALL TURFING PLAN

L5.1