

10SV012

NOTE:
CONDUIT, CURB AND GUTTER, AND SIDEWALK ARE
NOT PROPOSED FOR ELK VALE ROAD FRONTAGE.

LOT H1
HWY 9-45.

ELK VALE ROAD



1860 Concourse Drive
Madison, WI 53703
Phone: (608) 241-7700
Fax: (608) 241-7884
www.cetecengineering.com

cetec
ENGINEERING SERVICES, INC.

DESIGNED: G.M.
CHECKED: G.M.
APPROVED: G.M.
DATE: 2/28/10

PRELIMINARY PLAT

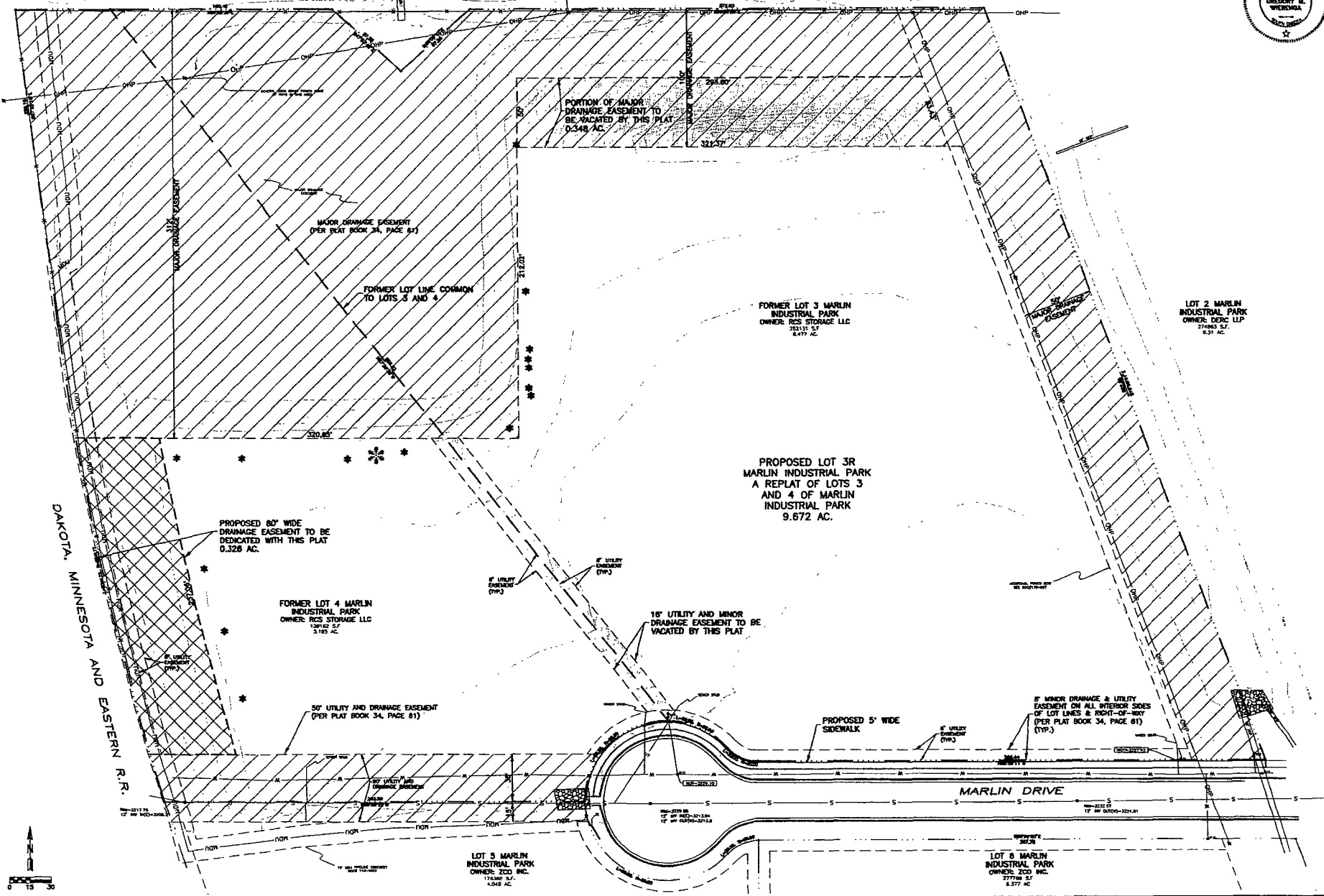
SHEET DESCRIPTION

LOT 3R MARLIN INDUSTRIAL PARK
(FORMERLY LOTS 3 & 4 OF
MARLIN INDUSTRIAL PARK)

PROJECT:

1 OF 1

DAKOTA, MINNESOTA AND EASTERN R.R.



PORTION OF MAJOR
DRAINAGE EASEMENT TO
BE VACATED BY THIS PLAT
0.348 AC.

MAJOR DRAINAGE EASEMENT
(PER PLAT BOOK 34, PAGE 81)

FORMER LOT LINE COMMON
TO LOTS 3 AND 4

FORMER LOT 3 MARLIN
INDUSTRIAL PARK
OWNER: RCS STORAGE LLC
202131 S.E.
6.477 AC.

LOT 2 MARLIN
INDUSTRIAL PARK
OWNER: DEBC LLP
274963 S.E.
6.31 AC.

PROPOSED LOT 3R
MARLIN INDUSTRIAL PARK
A REPLAT OF LOTS 3
AND 4 OF MARLIN
INDUSTRIAL PARK
9.672 AC.

PROPOSED 60" WIDE
DRAINAGE EASEMENT TO BE
DEDICATED WITH THIS PLAT
0.326 AC.

FORMER LOT 4 MARLIN
INDUSTRIAL PARK
OWNER: RCS STORAGE LLC
139162 S.E.
3.162 AC.

18" UTILITY AND MINOR
DRAINAGE EASEMENT TO BE
VACATED BY THIS PLAT

30" UTILITY AND DRAINAGE EASEMENT
(PER PLAT BOOK 34, PAGE 81)

LOT 5 MARLIN
INDUSTRIAL PARK
OWNER: ZOO INC.
178368 S.E.
4.949 AC.

LOT 6 MARLIN
INDUSTRIAL PARK
OWNER: ZOO INC.
277768 S.E.
6.377 AC.

MARLIN DRIVE

PROPOSED 5' WIDE
SIDEWALK

8" MINOR DRAINAGE & UTILITY
EASEMENT ON ALL INTERIOR SIDES
OF LOT LINES & RIGHT-OF-WAY
(PER PLAT BOOK 34, PAGE 81)
(TYP.)