

PRELIMINARY

Plat of Lots 1R through 32R of Block 3 of Dakota Ridge Subdivision

(formerly all of Block 3 of Dakota Ridge Subdivision)
located in the SE1/4 of Section 18, T1N, R8E, BHM,
Rapid City, Pennington County, South Dakota

Prepared by:
Flak Land Surveying &
Consulting Engineers, Inc.
P.O. Box 0184
Rapid City, South Dakota 57709
605-348-1038
Project # 09-08-01

No Vehicular Access onto or off of Minnesota Street
from Lots 1R - 11R.

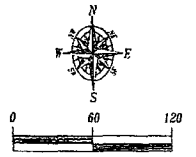
See Sheet 2 for graphic depiction and notes
regarding Utility and Minor Drainage Easements

Any major drainage easement shown hereon shall be kept
free of all obstructions including, but not limited to,
buildings, walls, fences, hedges, trees and shrubs. These
easements grant to all public authorities the right to
construct, operate, maintain, inspect and repair such
improvements and structures as it deems expedient to
facilitate drainage from any source.

LEGEND

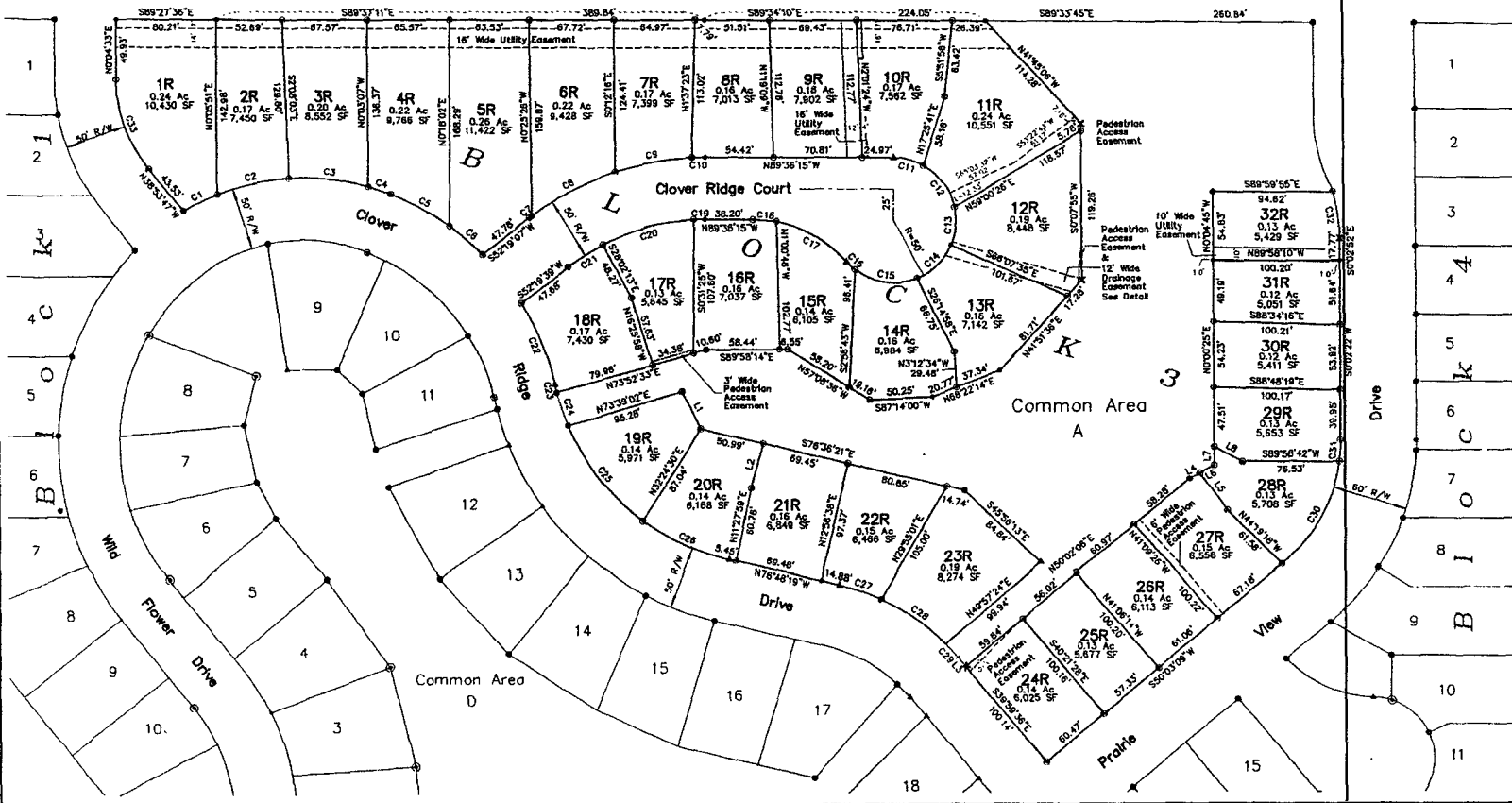
- = Found Survey Monument, LS 2652 or as noted
- ▲ = Found Survey Monument, #3 Rebar
- ✕ = Found curved "X" in concrete
- ⊙ = Set Rebar with cap marked "RW Flak 6565"

See Plat Book 23 Pages 31-34 for record lot
annotations.



March 15, 2010
Revised May 3, 2010
Basis of Bearings: Grid North
from GPS

Minnesota Street



Short Course Tables

NUM	DELTA	ARC	RADIUS	BEARING	DISTANCE
C1	9°18'19"	30.05	185.00	S63°32'14" W	30.01
C2	16°24'37"	59.44	185.00	S77°23'43" W	59.19
C3	19°41'17"	63.57	185.00	N83°33'20" W	63.26
C4	55°1'26"	18.91	185.00	N70°46'57" W	18.80
C5	14°7'02"	53.68	215.00	N60°48'15" W	53.52
C6	8°11'04"	34.47	215.00	N48°01'40" W	34.43
C7	0°33'57"	2.25	227.67	S52°34'16" W	2.25
C8	19°06'30"	75.83	227.67	S62°24'30" W	75.58
C9	15°43'44"	62.50	227.67	S79°49'37" W	62.31
C10	2°41'16"	10.68	227.67	S89°02'08" W	10.68
C11	28°33'56"	24.93	50.00	N75°15'49" W	24.67
C12	49°26'43"	43.15	50.00	N36°15'28" W	41.82
C13	35°00'51"	30.56	50.00	N45°58'20" E	30.08
C14	44°48'48"	39.12	50.00	N48°01'34" E	39.13
C15	59°55'46"	52.30	50.00	S81°35'19" E	49.85
C16	10°05'39"	8.81	50.00	S46°34'36" E	8.80
C17	37°33'58"	65.57	100.00	N60°12'15" W	64.40
C18	10°44'39"	18.75	100.00	N84°21'34" W	18.72
C19	25°33'59"	8.92	177.67	S88°45'40" W	8.89
C20	24°32'01"	76.08	215.00	N21°33'44" W	75.50
C21	10°38'34"	33.00	177.67	S57°37'21" W	32.86
C22	19°09'21"	71.88	215.00	N21°33'44" W	71.55
C23	2°08'21"	6.91	185.00	S12°08'09" E	6.81
C24	8°41'06"	28.04	185.00	S72°17'18" E	28.02
C25	30°26'10"	98.27	185.00	S37°53'16" E	97.12
C26	23°46'03"	76.74	185.00	S64°59'23" E	76.19
C27	11°38'49"	35.56	174.82	N71°11'23" W	35.50
C28	20°32'46"	62.72	174.82	N55°59'38" W	62.39
C29	4°43'12"	14.41	174.82	N41°00'39" W	14.41
C30	14°41'36"	97.35	130.65	N28°39'04" E	95.12
C31	7°22'45"	16.83	130.65	N3°36'52" E	16.81
C32	17°16'05"	37.87	125.00	N8°38'09" W	37.53
C33	36°58'19"	79.24	116.49	S19°24'37" E	77.72

NUM	BEARING	DISTANCE
L1	S26°22'29" E	33.47
L2	S15°25'30" W	36.91
L3	S40°18'40" E	9.90
L4	N60°53'48" E	9.95
L5	S35°59'32" E	37.20
L6	N60°53'40" E	13.08
L7	N0°00'25" E	14.26
L8	S65°17'29" E	25.23

Easement Detail

