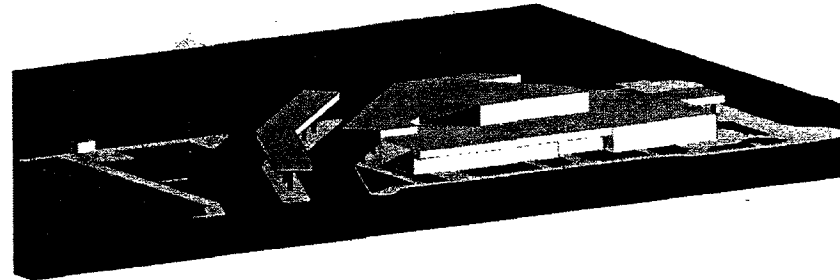
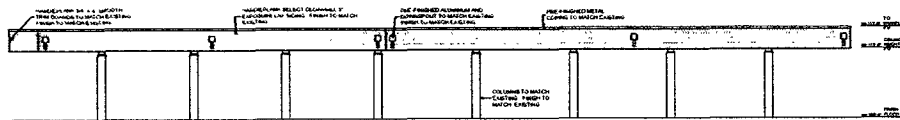


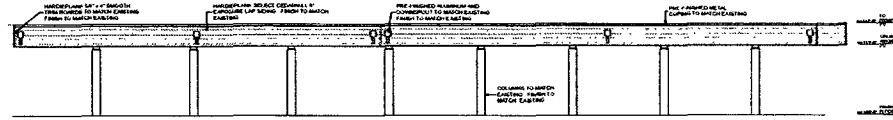
① NORTH VIEW OF SITE



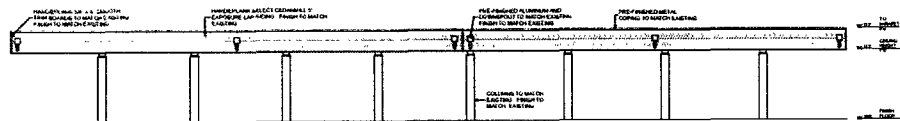
② SOUTH VIEW OF SITE



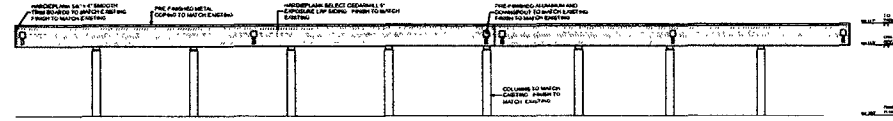
③ NORTH NORTHEAST CANOPY ELEVATION
SCALE: 3/32" = 1'-0"



④ EAST NORTHEAST CANOPY ELEVATION
SCALE: 3/32" = 1'-0"



⑤ WEST SOUTHWEST CANOPY ELEVATION
SCALE: 3/32" = 1'-0"



⑥ SOUTH SOUTHWEST CANOPY ELEVATION
SCALE: 3/32" = 1'-0"

RECEIVED

MAY 28 2010

Rapid City Growth
Management Department

NOT FOR
CONSTRUCTION

CITY REVIEW
SET

GEIGER
ARCHITECTURE

ARCHITECTURE
DESIGN/BUILD
RESTORATION
PLANNING &
DEVELOPMENT
LEES OFFICE
ARCHITECT
415 MAIN ST. 2ND FL. RAPID CITY, SD 57701-1404

PRELIMINARY DESIGN DOCUMENTS
MILO BARBER TRANSPORTATION
CENTER IMPROVEMENTS
333 SIXTH STREET
RAPID CITY, SD 57701

DRAWN BY: TGM, CAD
DATE UPDATED: 5/11/10
DATE PLOTTED: 5/11/10

DATE PRINTED:
REVISIONS PRINTED:
REVISION 1
REVISION 2
REVISION 3

PERSPECTIVES/
EXTERIOR
ELEVATIONS

A1