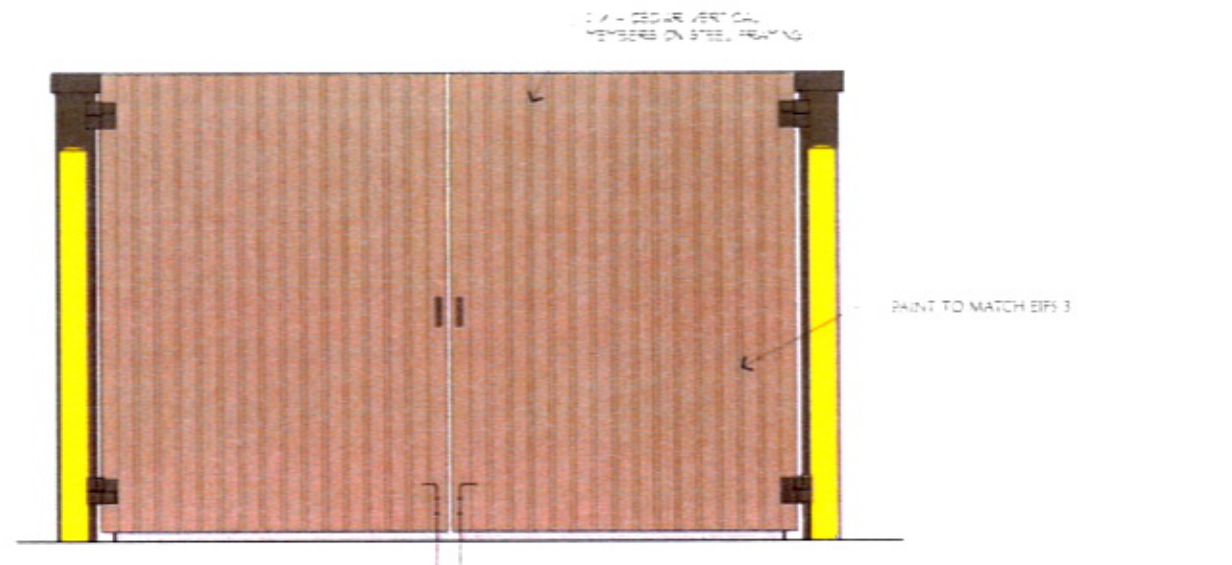


1 TRASH-ENCLOSURE PLAN

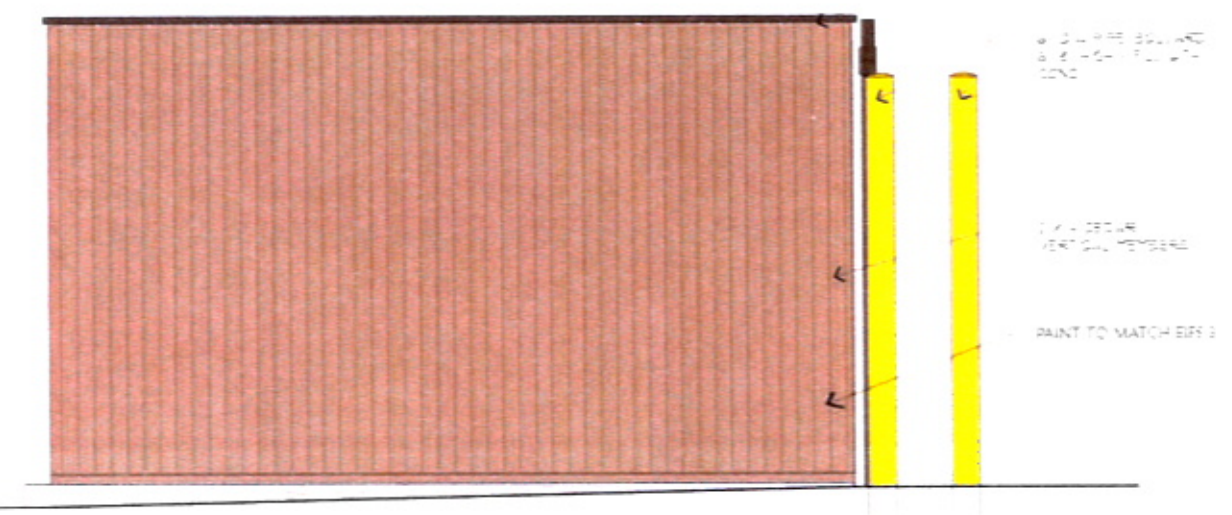
14'-4"

3" x 6" STEEL BOLLARDS WITH 3" x 6" STEEL TUBING

3" x 6" STEEL BOLLARDS WITH 3" x 6" STEEL TUBING



2 TRASH-ENCLOSURE ELEVATION



3 TRASH-ENCLOSURE ELEVATION