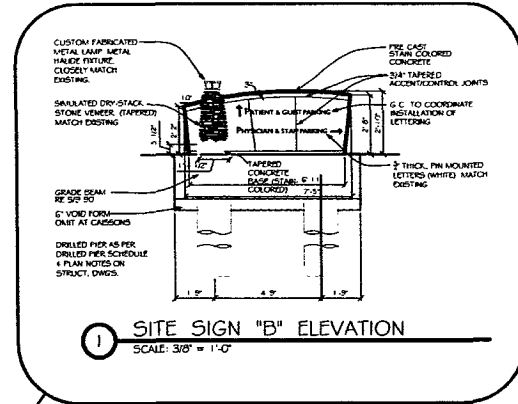


LANDSCAPE PLAN
SCALE: 1" = 40'-0"



PARKING CALCULATIONS

AS INDICATED BY THE PLANNED COMMERCIAL DEVELOPMENT SUBMITTALS THE BLACK HILLS SURGERY CENTER & IMAGING CENTER HAVE SHARED PARKING LOT AGREEMENTS & THEREFORE THE PARKING CALCULATIONS ARE COVERED.

SQUARE FEET

BPHC EXISTING	39,228
BPHC ADDITION	17,243
BPHC EXISTING	11,529
581,110 SQ. FT.	

PARKING REQUIRED:

HOSPITAL (2 STALLS / BED)	27 x 2 = 54 STALLS
MEDICAL CLINIC (4 STALLS / SPIN)	4 x 100 / 1000 = 4 x 176 STALLS
STORAGE / ARCHIVE (225 STALLS / 1,000 SPIN)	14,440 / 1000 x 25 = 361 STALLS
TOTAL REQUIRED = 554 STALLS	

PARKING PROVIDED:

NEW PARKING LOT (E&W)	89 STALLS
NEW 5th ST PARKING LOT	80 STALLS
IMAGING CENTER (EXISTING)	100 STALLS
SURGERY CENTER (EXISTING)	20 STALLS
TOTAL PROVIDED = 389 STALLS	
(61 OF WHICH ARE SHARED PERS)	

THESE CALCULATIONS DO NOT INCLUDE FUTURE BUILDING ADDITIONS THAT WERE INDICATED IN THE APPROVED PLANNED COMMERCIAL DEVELOPMENT.

RECEIVED

MAY 27 2010

Rapid City Growth Management Department

WILLIAMS & ASSOCIATES ARCHITECTURE, INC.
125 E. Colorado Blvd., Suite 2A, Spearfish, South Dakota 57783
Phone (605) 642-2009 - Email: skw@williams.com - Fax: (605) 642-3339

Project Title
BLACK HILLS SURGICAL HOSPITAL
NORTHERN EXPANSION
216 ANAMARIA DRIVE
RAPID CITY, SOUTH DAKOTA

Project No 00-21
Date 8-25-10

Sheet Title
SITE PLAN

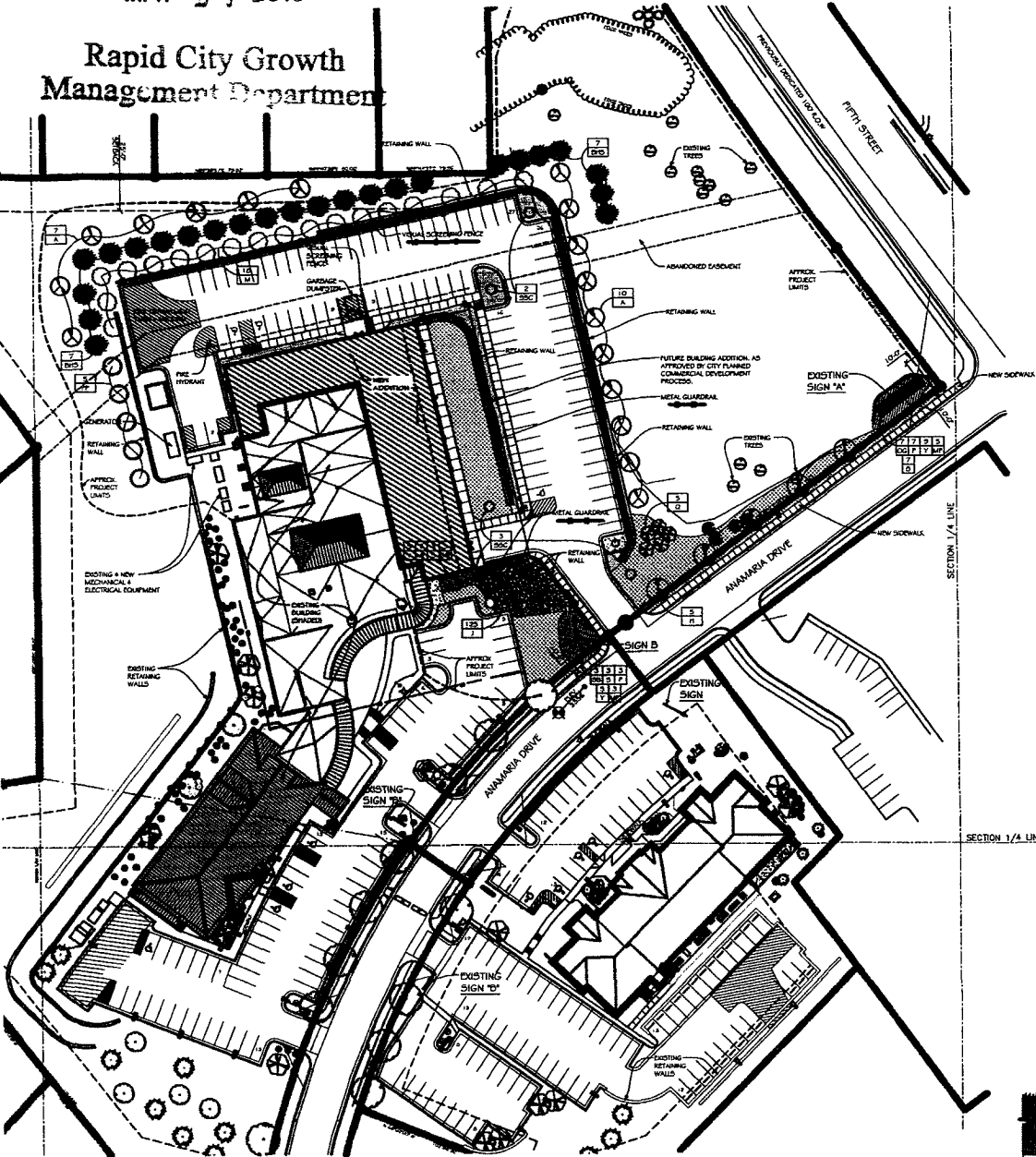
Sheet Number
1.10 -

RECEIVED

10PD040

MAY 27 2010

Rapid City Growth
Management Department

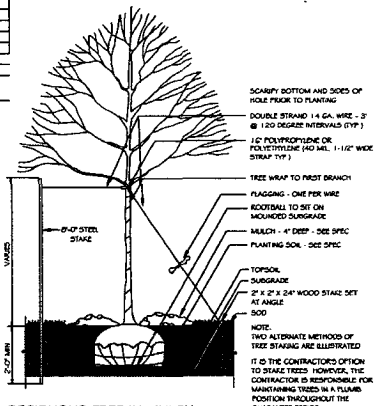


LANDSCAPE LEGEND (NEW MATERIAL)

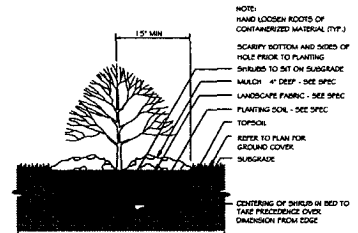
SYM	QTY	COMMON NAME	SIZE	CONT	NOTES
PP	5	PONDEROSA PINE			
CONIFEROUS TREES					
PP	5	PONDEROSA PINE	6" POT	END	
BYS	24	BLACK HILLS SPRUCE	6" POT	END	
DECIDUOUS TREES					
A	17	GREEN ASH	2" CAL	END	
H	5	HAWKERS HONEY LOCUST	2" CAL	END	
M	18	MAPLE	2" CAL	END	
ORNAMENTAL DECIDUOUS TREES					
SSC	5	SPRING SHOW CRAB	2" CAL	END	OK APPROVED ORAL
CONIFEROUS SHRUBS					
MP	11	DWARF MUGO PINE	2 GAL	POT	
J	125	WEDDGE AMPERE	2 GAL	POT	
Y	19	TALON SPREADING YEW	2 GAL	POT	24" SPED.
DECIDUOUS SHRUBS					
C	3	CONTACT BURNING BUSH	2 GAL	POT	18-24" HOT
G	10	GOLDMOUND SPirea	2 GAL	POT	18-24" HOT
D	7	BARBERRY (CRUSON PLANT)	2 GAL	POT	18-24" HOT
OG	7	ORNAMENTAL GRASS	2 GAL	POT	18-24" HOT
ROCK					
		22 BY 1 RIVER ROCK	2'-2'		SMOOTH & WASHED

LANDSCAPE POINTS:

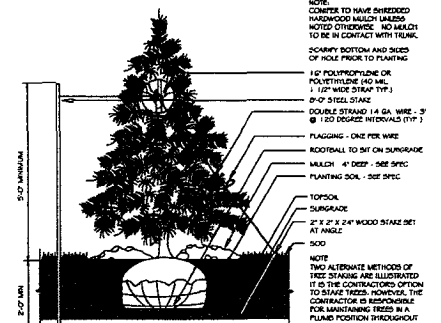
SYM	QTY	COMMON NAME	TYPE	POINTS	TOTAL POINTS
PP	5	PONDEROSA PINE	LARGE	2000	10,000
BYS	24	BLACK HILLS SPRUCE	LARGE	2000	48,000
A	17	GREEN ASH	LARGE	2000	34,000
H	5	HAWKERS HONEY LOCUST	LARGE	2000	10,000
M	18	MAPLE	LARGE	2000	36,000
C	3	CONTACT BURNING BUSH	MEDIUM	1000	3,000
SSC	5	SPRING SHOW CRAB	SMALL	500	2,500
J	125	WEDDGE AMPERE	SHRUB	250	31,250
MP	11	DWARF MUGO PINE	SHRUB	250	2,750
Y	19	TALON SPREADING YEW	SHRUB	250	4,750
S	6	GOLDMOUND SPirea	SHRUB	250	1,500
F	10	GOLDMOUND SPirea	SHRUB	250	2,500
B	7	BARBERRY (CRUSON PLANT)	SHRUB	250	1,750
OG	7	ORNAMENTAL GRASS	SHRUB	250	1,750
OR	19,360 SQ	GRASS	GRASS	100%	193,601
TOTAL POINTS PROPOSED					272,951
TOTAL POINTS REQUIRED					292,164
329,150 SQ' SITE AREA SHOWN					
36,506 SQ' TOTAL BUILDING FOOTPRINT					
292,164 LANDSCAPE POINTS REQUIRED					



DECIDUOUS TREE IN MULCH
NOT TO SCALE



SHRUB IN MULCH
NOT TO SCALE



CONIFEROUS TREE IN MULCH
NOT TO SCALE

WILLIAMS & ASSOCIATES ARCHITECTURE, INC.
125 E. Colorado Blvd., Suite 2A, Spearfish, South Dakota 57783
Phone (605) 642-2009 - E-mail: skwarch@flashnet.com - Fax (605) 642-3339

**BLACK HILLS SURGICAL HOSPITAL
NORTHERN EXPANSION
216 ANAMARIA DRIVE
RAPID CITY, SOUTH DAKOTA**

Project Title: **BLACK HILLS SURGICAL HOSPITAL NORTHERN EXPANSION 216 ANAMARIA DRIVE RAPID CITY, SOUTH DAKOTA**

Project No. and Revision: **02-31 5-23-10**

Drawn by: **02-31 CD/216 5-29-10 JPS**

Sheet Title: **SITE LANDSCAPE PLAN**

Sheet Number: **1.15**

LANDSCAPE PLAN
SCALE 1" = 40'-0"

