

Planned Residential Development

Block 3 of
Dakota Ridge Subdivision
located in the SE1/4 of Section 18
T1N, R8E, BHM, Rapid City, Pennington County
South Dakota

Fisk Land Surveying &
Consulting Engineers, Inc.
1022 Mich. Street - P.O. Box 8154
Rapid City, South Dakota 57709
(605) 348-1538 (ph) (605) 341-1112 (fx)
fisk@midconetwork.com

The information herein is copyrighted material, and specific to the date, client and purpose as stated.
No warranty or guarantee is expressed or implied to any party, for any other purpose at any time except as stated.

Planned
Residential Development Exhibit
Block 3 of Dakota Ridge Subdivision
Rapid City, Pennington County, South Dakota

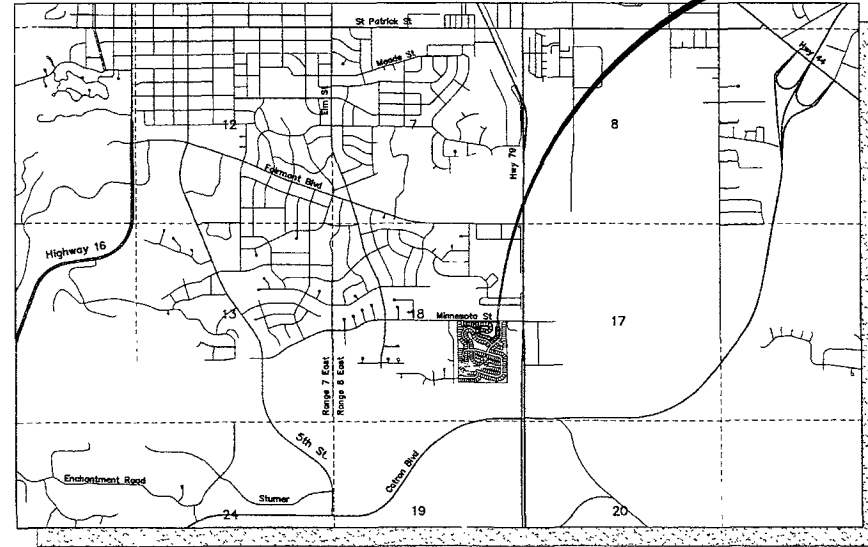
Surveyed by: BL,ML
Date: 9/09
Drawn by: RWF
Date: 3/25/10
Checked by: JF
Revisions
5/3/10 Addl Utilities
Lots 1 & 32

Project No.
09-08-01

Title
Sheet

Vicinity Map
Not to Scale

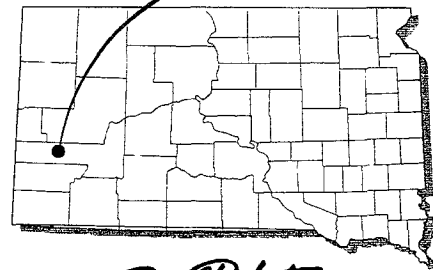
Project Location



INDEX OF SHEETS

- 1 Title Sheet
- 2 Existing Site
- 3 Proposed Site Plan
- 4 Proposed Standardized Easements
- 5 Easement Vacations
- 6 Plat (Page 1)
- 7 Plat (Page 2)

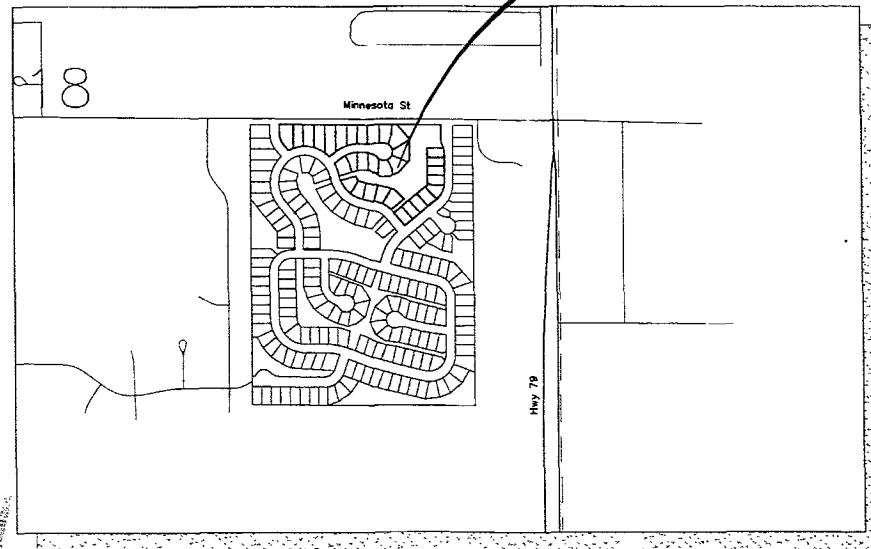
Project Location
Rapid City, SD



South Dakota
Vicinity Map

Project Location

Site Map
Not to Scale



RECEIVED
MAY 06 2010
Rapid City Growth
Management Department

UTILITY CONTACTS

BLACK HILLS POWER
PO BOX 1440
RAPID CITY, SD 57709

MONTANA-DAKOTA UTILITIES
PO BOX 1060
RAPID CITY, SD 57709

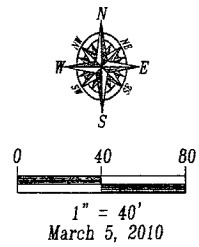
PRAIRIEWAVE COMMUNICATIONS
809 DEADWOOD AVENUE
RAPID CITY, SD 57702

QWEST COMMUNICATIONS
612 MT RUSHMORE ROAD
RAPID CITY, SD 57701

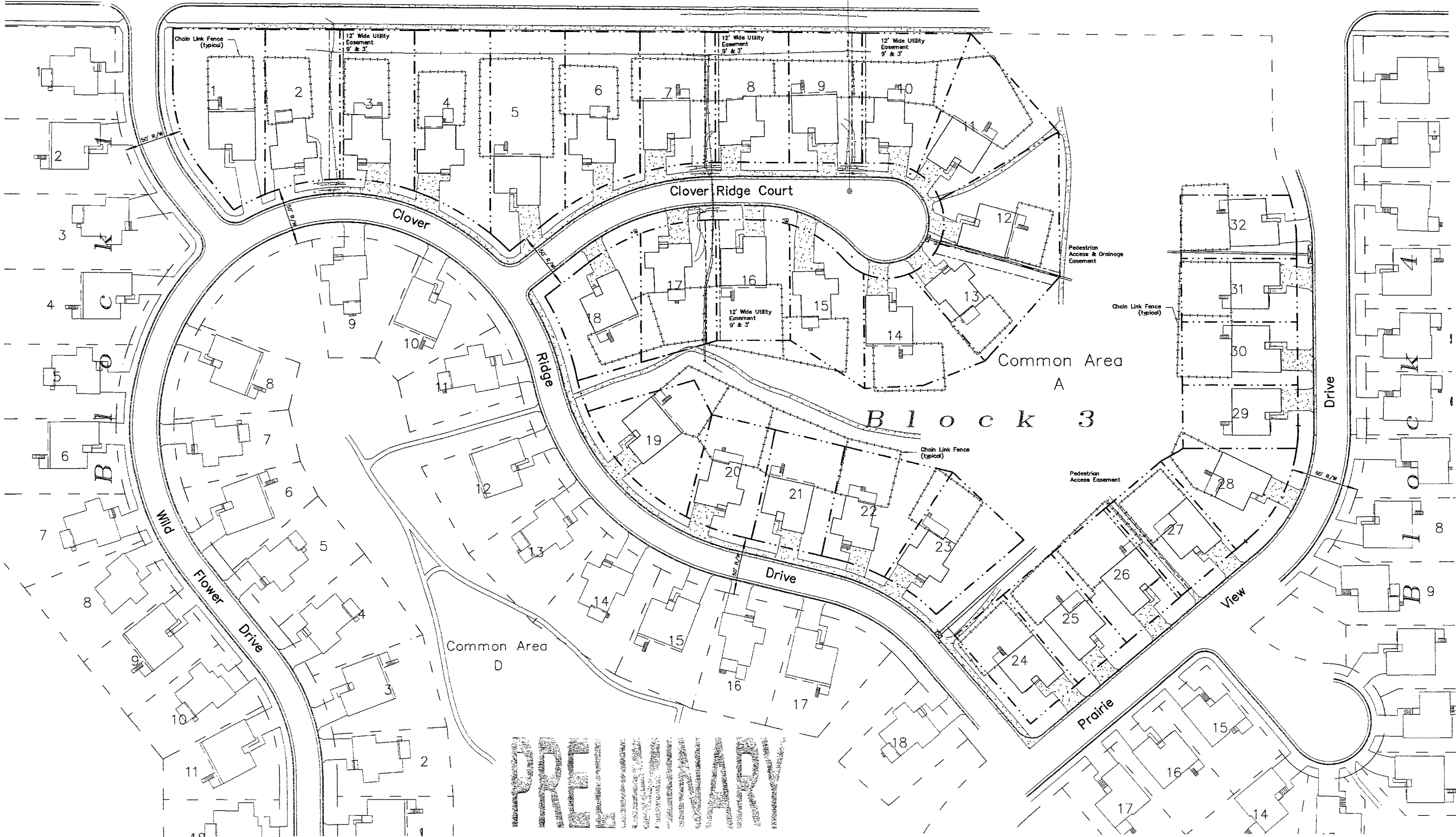
MID-CONTINENT COMMUNICATIONS
1624 CONCOURSE COURT
RAPID CITY, SD 57703

PRELIMINARY

ONE CALL
BEFORE DIGGING
1-800-781-7474



Minnesota Street



Fisk Land Surveying & Consulting Engineers, Inc.
 1022 Main Street - P.O. Box 8154
 Rapid City, South Dakota 57709
 (605) 348-1538 (ph) (605) 341-1112 (fx)
 fiskus@midconet.net

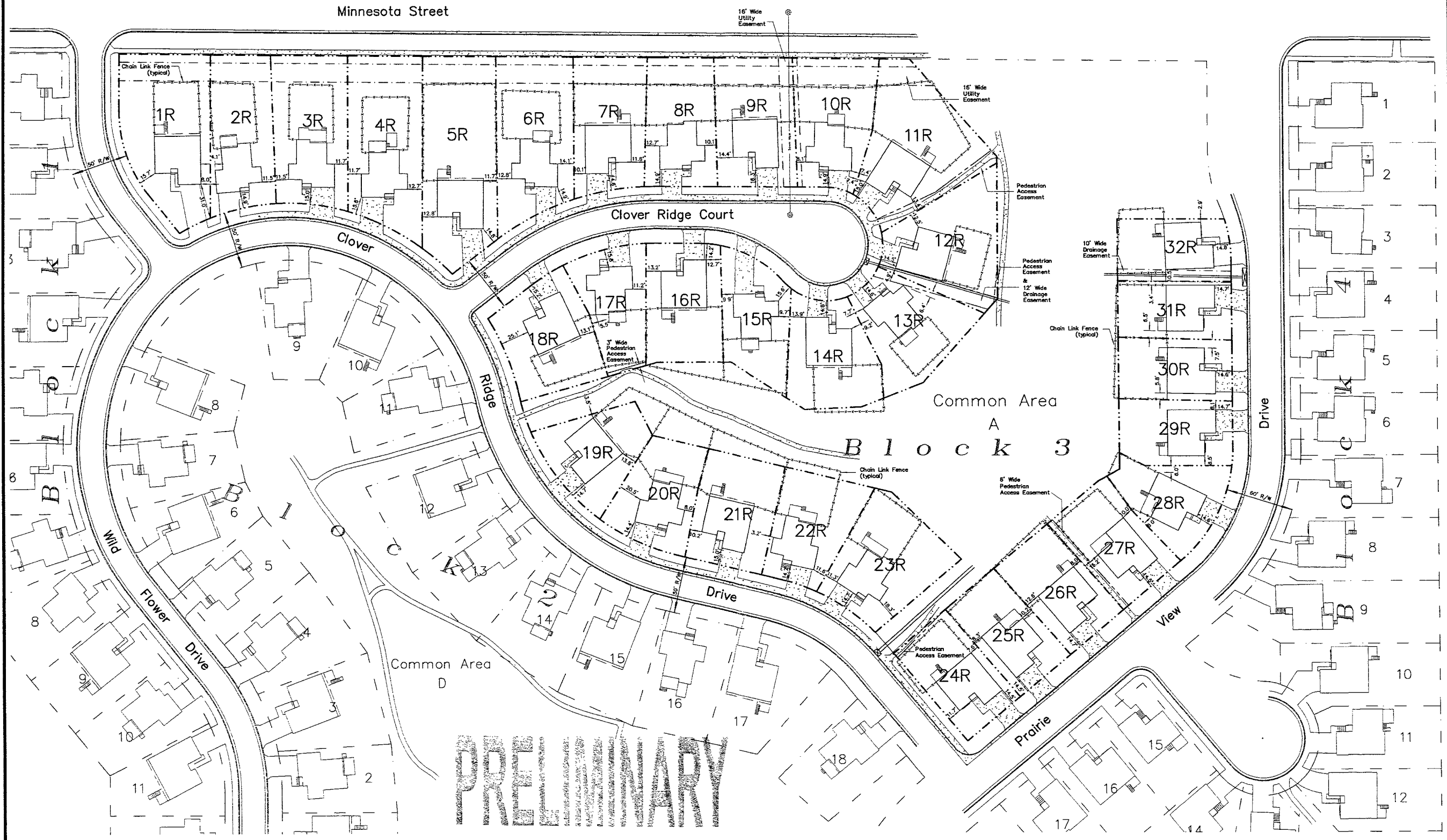
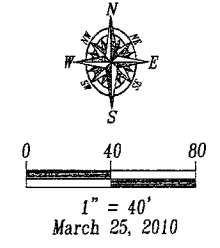
The information herein is copyrighted material, and specific to the date, client and purpose as stated.
 No warranty or guarantee is expressed or implied to any party, for any other purpose at any time except as stated.

Planned Residential Development Exhibit
Block 3 of Dakota Ridge Subdivision
 Rapid City, Pennington County, South Dakota

Surveyed by: BLML
 Date: 9/09
 Drawn by: RWF
 Date: 3/5/10
 Checked by: JF
 Revisions
 5/3/10-Add Utilities

Project No.
 09-08-01
Site Plan (Existing)

NOTE: Proposed easements for Drainage and Pedestrian Access are shown hereon. See Sheet 4 for proposed Utility & Minor Drainage Easements



Fisk Land Surveying & Consulting Engineers, Inc.
 1022 Main Street - P.O. Box 8154
 Rapid City, South Dakota 57709
 (605) 348 1538 (ph) (605) 341-1112 (fx)
 fisk@midconetnetwork.com

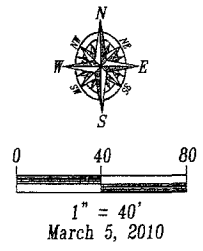
The information hereon is copyrighted material, and specific to the date, client and purpose as stated. No warranty or guarantee is expressed or implied to any party, for any other purpose at any time except as stated.

Planned
 Residential Development Exhibit
 Block 3 of Dakota Ridge Subdivision
 Rapid City, Pennington County, South Dakota

Surveyed by: BL,ML
 Date: 9/09
 Drawn by: RWF
 Date: 3/5/10
 Checked by: JF
 Revisions
 5/3/10-Addtl Utilities

Project No.
 09-08-01
Site Plan (Proposed)
 w/ Ped Access & Drainage Esmts

NOTE: Proposed Utility & Minor Drainage Easements 8' on the interior side of all lot Lines except as shown.



Fisk Land Surveying & Consulting Engineers, Inc.
 1022 Main Street - P.O. Box 8154
 Rapid City, South Dakota 57709
 (605) 348-1538 (ph) (605) 341-1112 (fx)
 fisk@midconetwork.com

The information herein is copyrighted material and specific to the date, client and purpose as stated.
 No warranty or guarantee is expressed or implied to any party, for any other purpose at any time except as stated.

Planned Development Exhibit
Residential Development Subdivision
Block 3 of Dakota Ridge Subdivision
 Rapid City, Pennington County, South Dakota

Surveyed by:	BL,ML
Date:	9/09
Drawn by:	RWF
Date:	3/5/10
Checked by:	JF
Revisions	5/2/10-List 1 & 32
Project No.	09-08-01
Site Plan (Proposed)	✓/ utility & minor drainage easements

