

The information herein is copyrighted material, and specific to the date, client and purpose as stated.

Planned Residential Development Exhibit
 Block 3 of Dakota Ridge Subdivision
 Rapid City, Pennington County, South Dakota

Surveyed by: BL,ML
 Date: 9/09
 Drawn by: RWF
 Date: 3/5/10
 Checked by: JF
 Revisions
 5/3/10 Lots 1 & 21

Project No.
 09-08-01

Plat
 Block 3

6 of 7

Plat of Lots 1R through 32R of Block 3 of Dakota Ridge Subdivision
 (formerly all of Block 3 of Dakota Ridge Subdivision)
 located in the SE1/4 of Section 18, T1N, R8E, BHM,
 Rapid City, Pennington County, South Dakota

Prepared by:
 Fisk Land Surveying & Consulting Engineers, Inc.
 P.O. Box 8154
 Rapid City, South Dakota 57709
 605-348-1538
 Project # 09-08-01

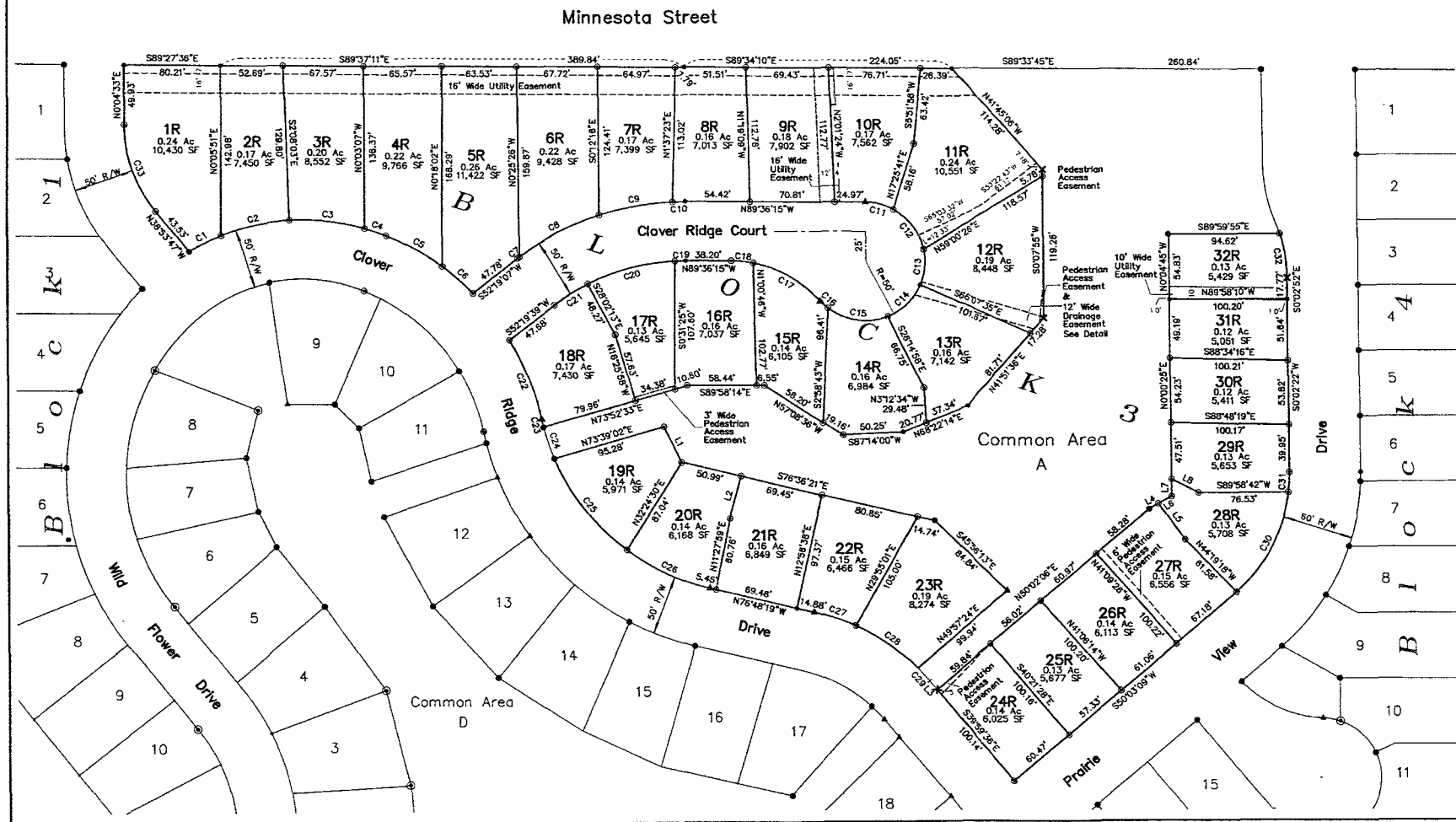
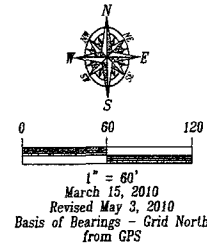
No Vehicular Access onto or off of Minnesota Street from Lots 1R - 11R.

See Sheet 2 for graphic depiction and notes regarding Utility and Minor Drainage Easements

Any major drainage easement shown hereon shall be kept free of all obstructions including, but not limited to, buildings, walls, fences, hedges, trees and shrubs. These easements grant to all public authorities the right to construct, operate, maintain, inspect and repair such improvements and structures as it deems expedient to facilitate drainage from any source.

LEGEND

- = Found Survey Monument, LS 2652 or as noted
 - ▲ = Found Survey Monument, #5 Rebar
 - X = Found carved "X" in concrete
 - ⊙ = Set Rebar with cap marked "RW Fisk 6565"
- See Plat Book 23 Pages 31-34 for record lot annotations.



Short Course Tables

NUM	DELTA	ARC	RADIUS	BEARING	DISTANCE
C1	97°19'	30.05'	185.00'	S63°32'14"W	30.01'
C2	182°43'7"	59.44'	185.00'	S77°23'43"W	59.19'
C3	19°41'17"	63.57'	185.00'	N83°33'20"W	63.26'
C4	5°51'26"	18.91'	185.00'	N70°46'57"W	18.90'
C5	14°18'02"	53.66'	215.00'	N60°46'15"W	53.52'
C6	8°11'04"	34.47'	215.00'	N49°01'40"W	34.43'
C7	0°33'57"	2.25'	227.67'	S52°34'16"W	2.25'
C8	19°06'30"	75.93'	227.67'	S62°24'30"W	75.58'
C9	15°43'44"	62.50'	227.67'	S75°49'37"W	62.31'
C10	2°41'16"	10.68'	227.67'	S89°02'08"W	10.68'
C11	28°33'58"	24.93'	50.00'	N75°15'49"W	24.67'
C12	49°26'43"	43.15'	50.00'	N36°15'28"W	41.82'
C13	35°00'51"	30.58'	50.00'	N5°58'20"E	30.08'
C14	44°49'48"	39.12'	50.00'	N46°01'54"E	38.13'
C15	59°53'48"	52.30'	50.00'	S81°35'19"E	49.95'
C16	10°05'39"	8.81'	50.00'	S46°34'36"E	8.80'
C17	37°33'58"	65.57'	100.00'	N60°12'15"W	64.40'
C18	10°44'39"	18.75'	100.00'	N84°21'34"W	18.72'
C19	2°53'59"	8.98'	177.67'	S88°55'40"W	8.99'
C20	24°32'01"	76.08'	177.67'	S75°12'39"W	75.50'
C21	10°38'34"	33.00'	177.67'	S57°37'21"W	32.96'
C22	19°05'21"	71.88'	215.00'	S37°14'44"W	71.53'
C23	2°08'21"	6.91'	185.00'	S12°08'08"E	6.91'
C24	8°41'06"	28.04'	185.00'	S18°22'18"E	28.02'
C25	30°26'10"	98.27'	185.00'	S37°53'16"E	97.12'
C26	23°46'03"	76.74'	185.00'	S64°59'23"E	76.19'
C27	11°38'49"	35.56'	174.92'	N71°11'23"W	35.50'
C28	20°32'40"	62.72'	174.92'	N55°05'38"W	62.39'
C29	4°43'12"	14.41'	174.92'	N41°10'35"W	14.41'
C30	42°41'38"	97.35'	130.65'	N28°39'04"E	95.12'
C31	7°22'45"	16.83'	130.65'	N3°36'52"E	16.81'
C32	17°16'05"	37.67'	125.00'	N8°39'09"W	37.53'
C33	38°58'19"	79.24'	116.49'	S19°24'37"E	77.72'

NUM	BEARING	DISTANCE
L1	S26°22'29"E	33.47'
L2	S15°25'30"W	36.91'
L3	S40°18'40"E	9.90'
L4	N60°53'40"E	9.05'
L5	S35°59'32"E	37.20'
L6	N60°53'40"E	13.08'
L7	N0°00'25"E	14.28'
L8	S63°17'29"E	25.23'

Easement Detail

