

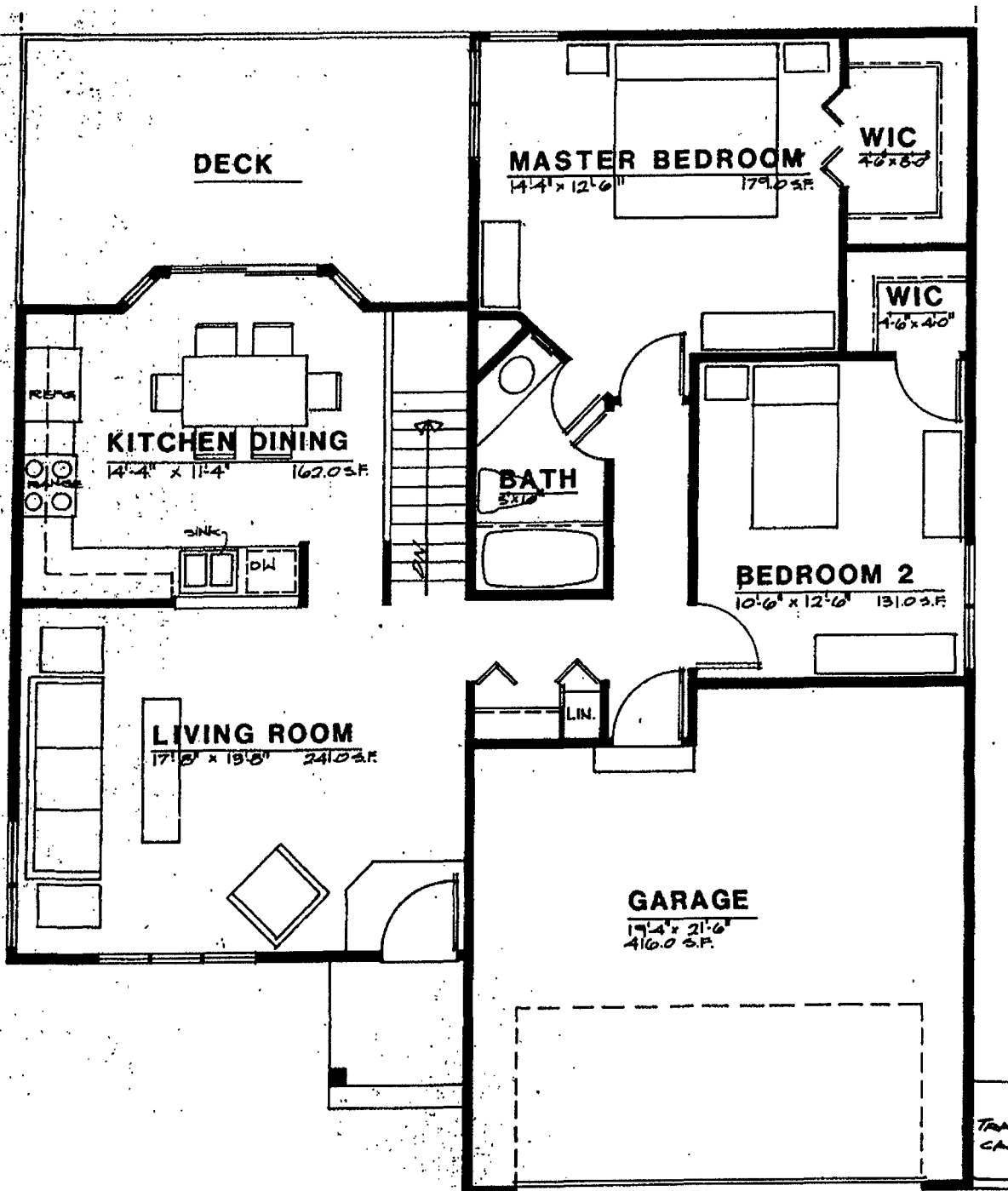
E-3A Fox Tail

ENLISTED THREE BEDROOM

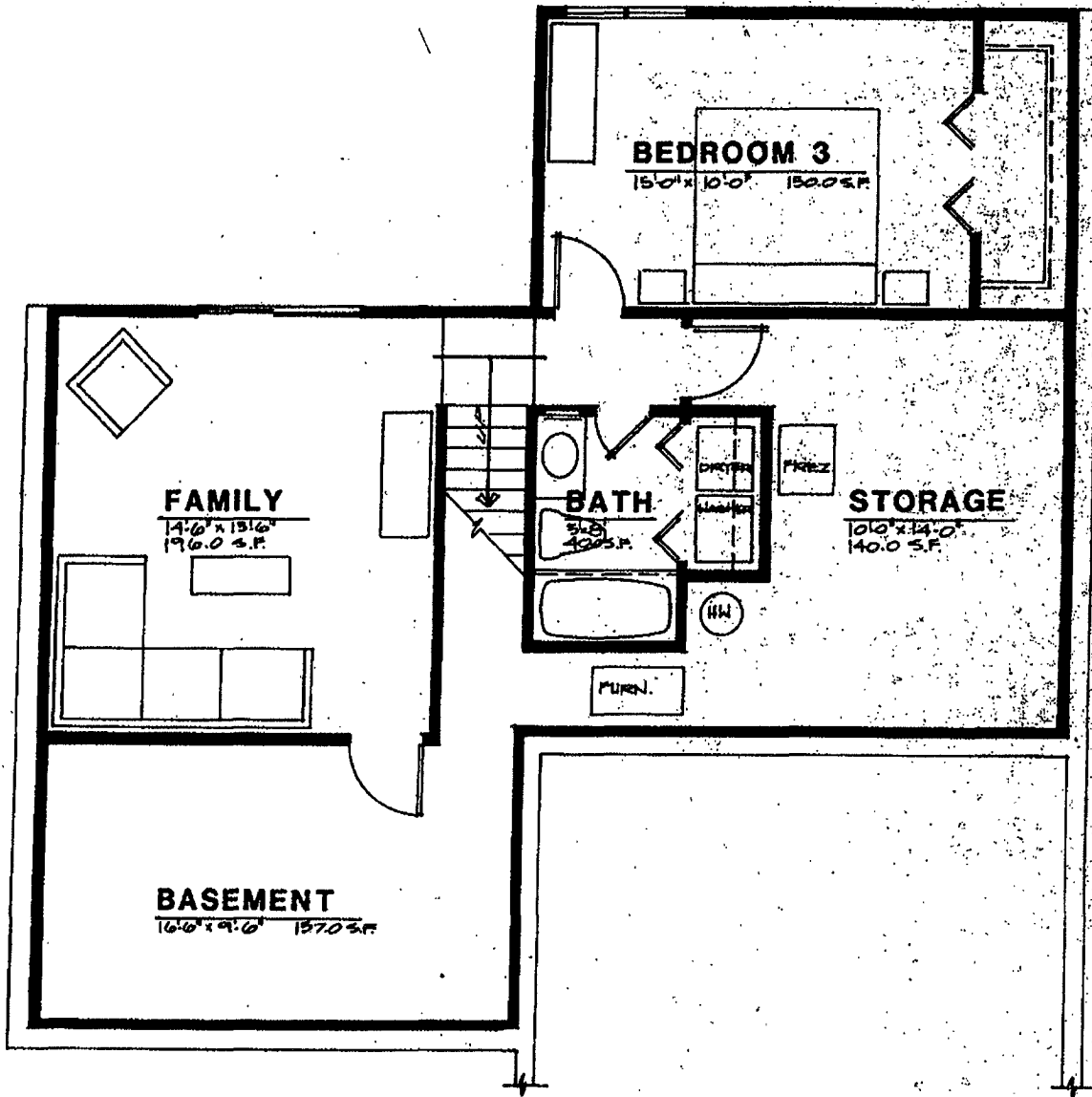
ID NO. :89R34-9242



CONTEMPORARY



TAN
CA



Fox Tail E3A
LOWER FLOOR PLAN

1/4" = 1'-0"

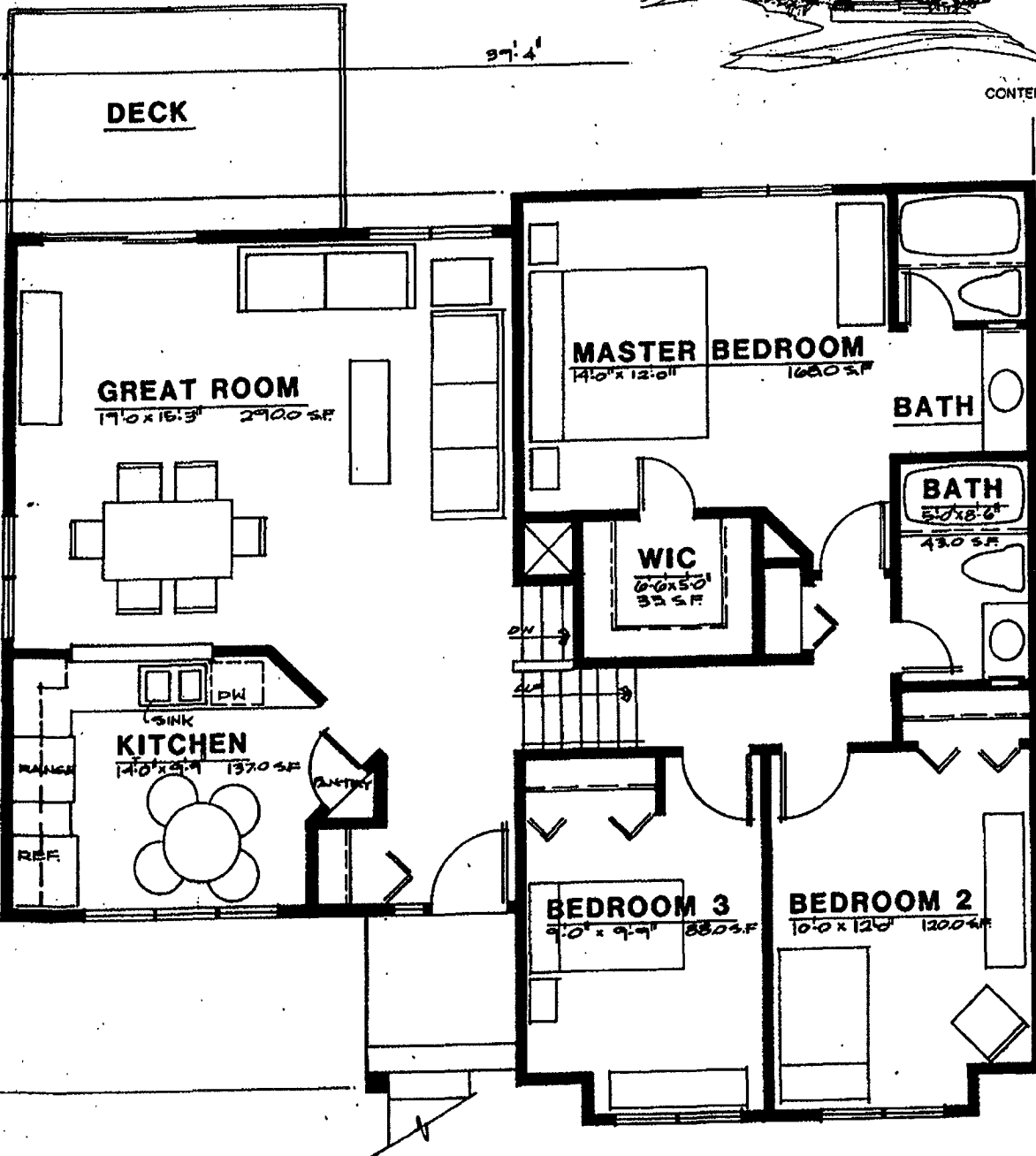
AREA	NET	GROSS
MAIN LEVEL :	745.0	1009.0
LOWER LEVEL :	499.0	998.0
TOTAL :	1,394.0 S.F.	2,007.0 S.F.

E-3B BROME

ENLISTED THREE BEDROOM
ID NO. : 89R34-9242



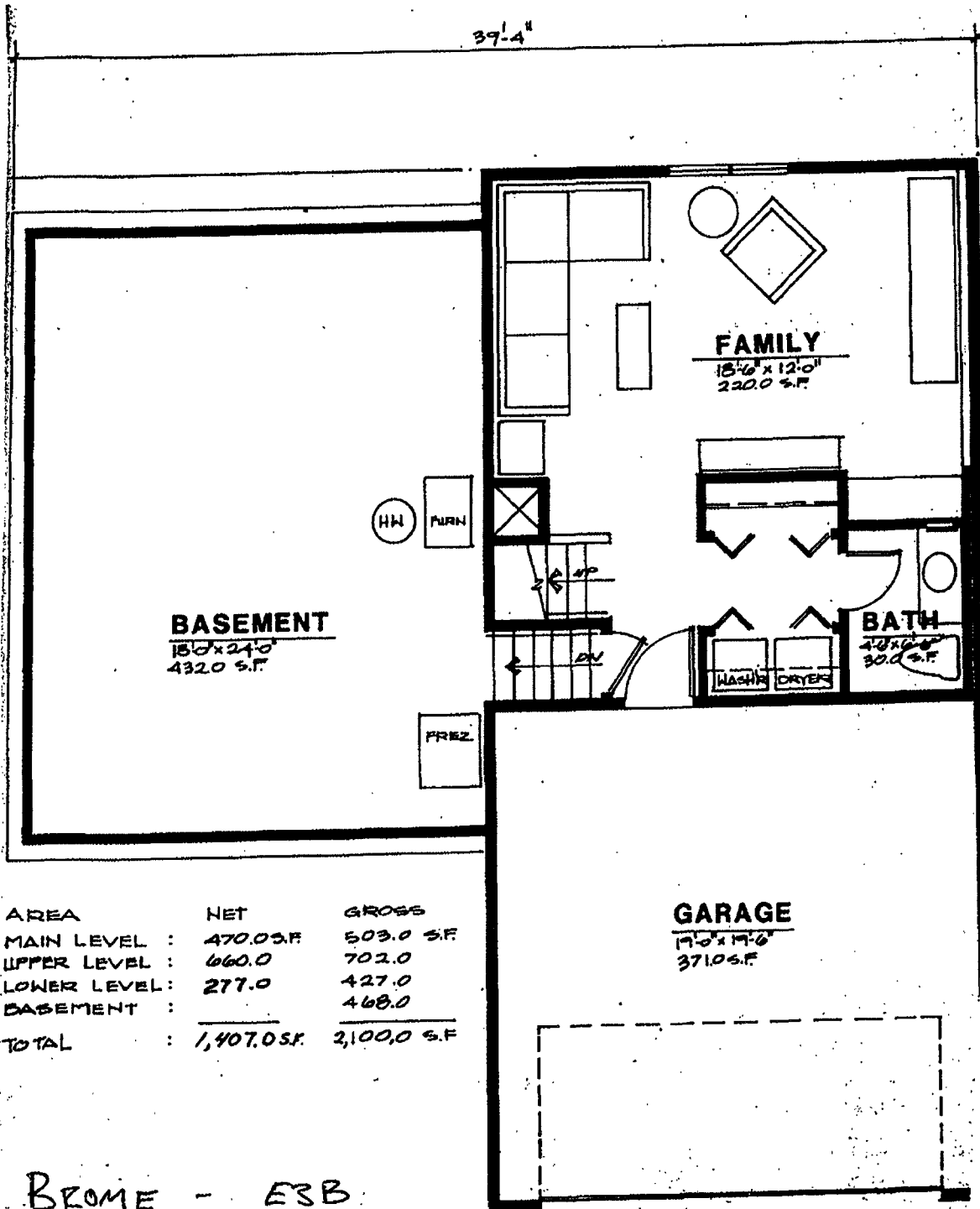
CONTEMPORARY



MAIN FLOOR PLAN

14'10"

39'-4"



AREA	NET	GROSS
MAIN LEVEL :	470.0 S.F.	503.0 S.F.
UPPER LEVEL :	660.0	702.0
LOWER LEVEL :	277.0	427.0
BASEMENT :		468.0
TOTAL :	1,407.0 S.F.	3,100.0 S.F.

BROME - ESB

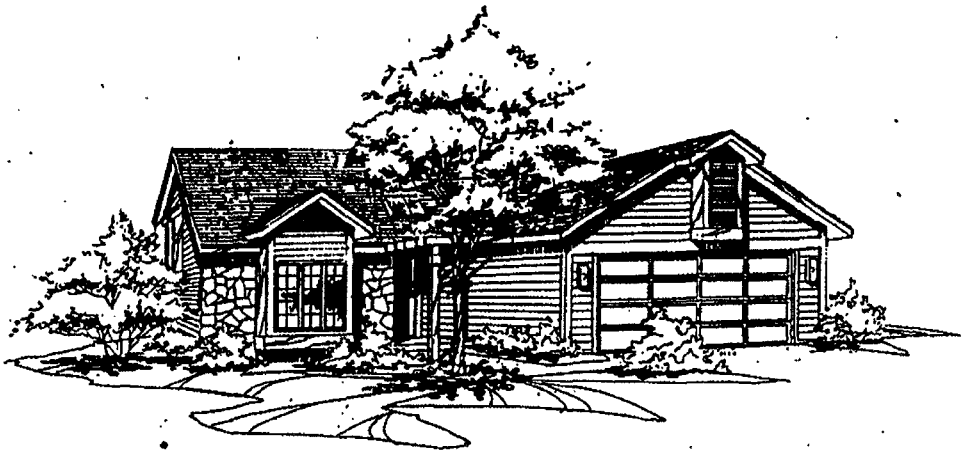
LOWER FLOOR PLAN

4/1/01

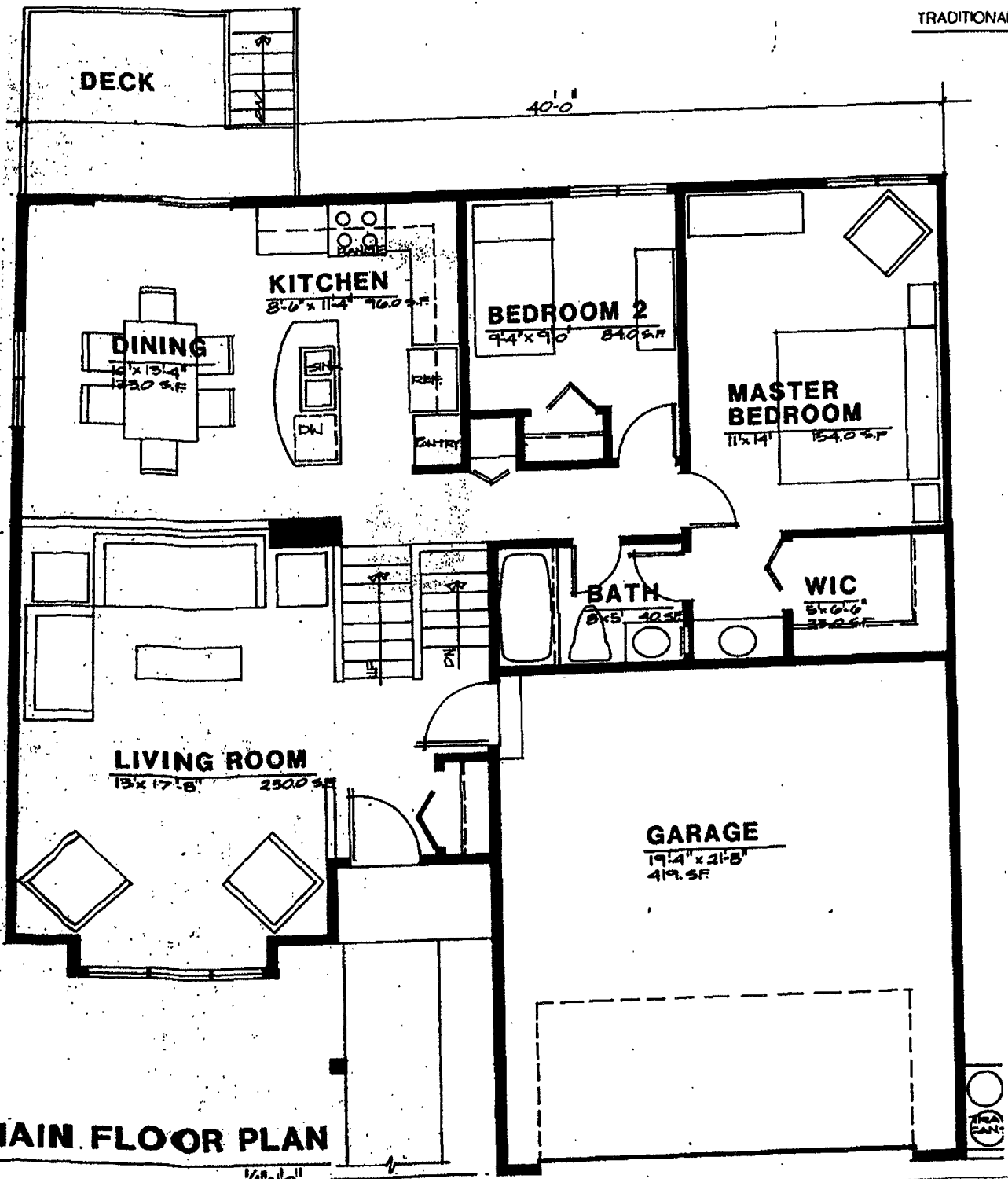
E-4 BERMUDA

ENLISTED FOUR BEDROOM

ID NO. : 89R34-9242



TRADITIONAL ELEVATION



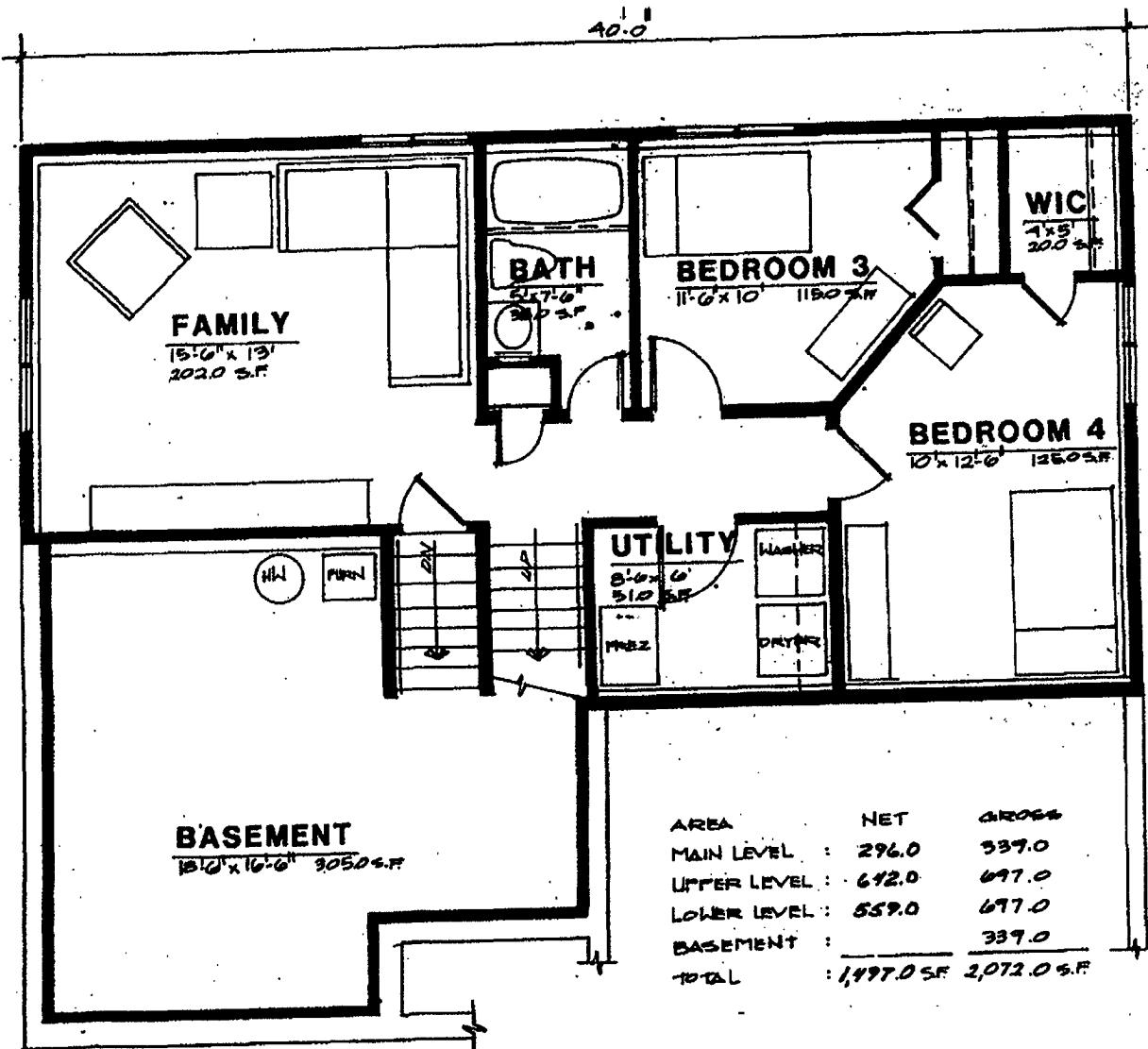
MAIN FLOOR PLAN

1/4" = 10'



BERMUDA E4 LOWER FLOOR PLAN

1/4" = 1'-0"



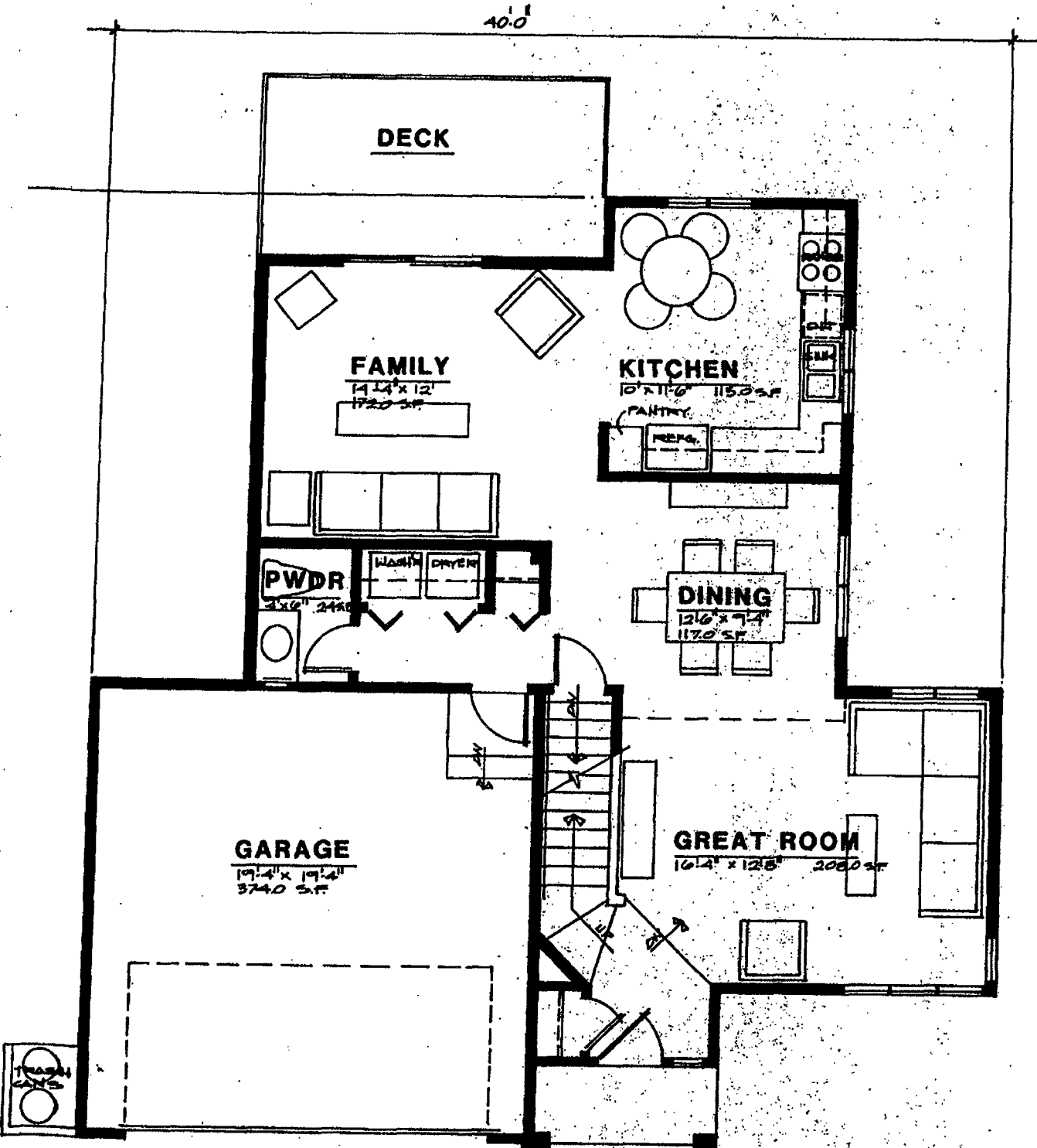
O-3

FEUÖEH

SAGE

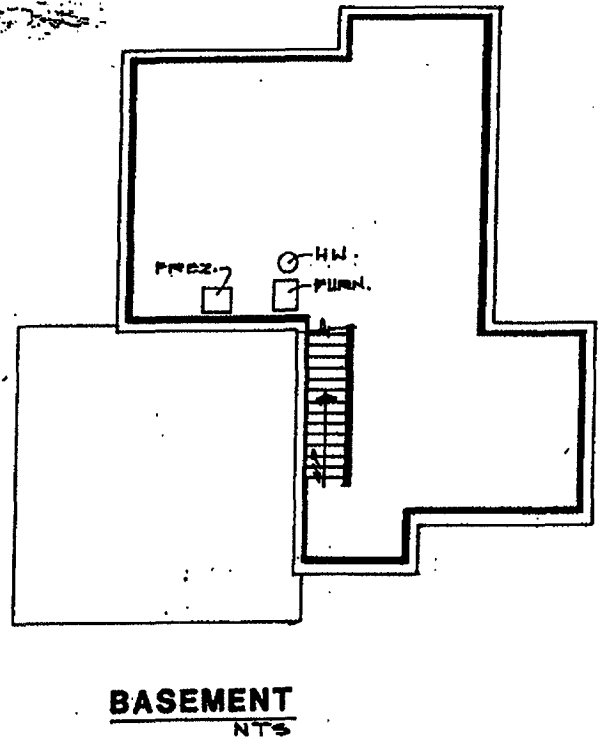
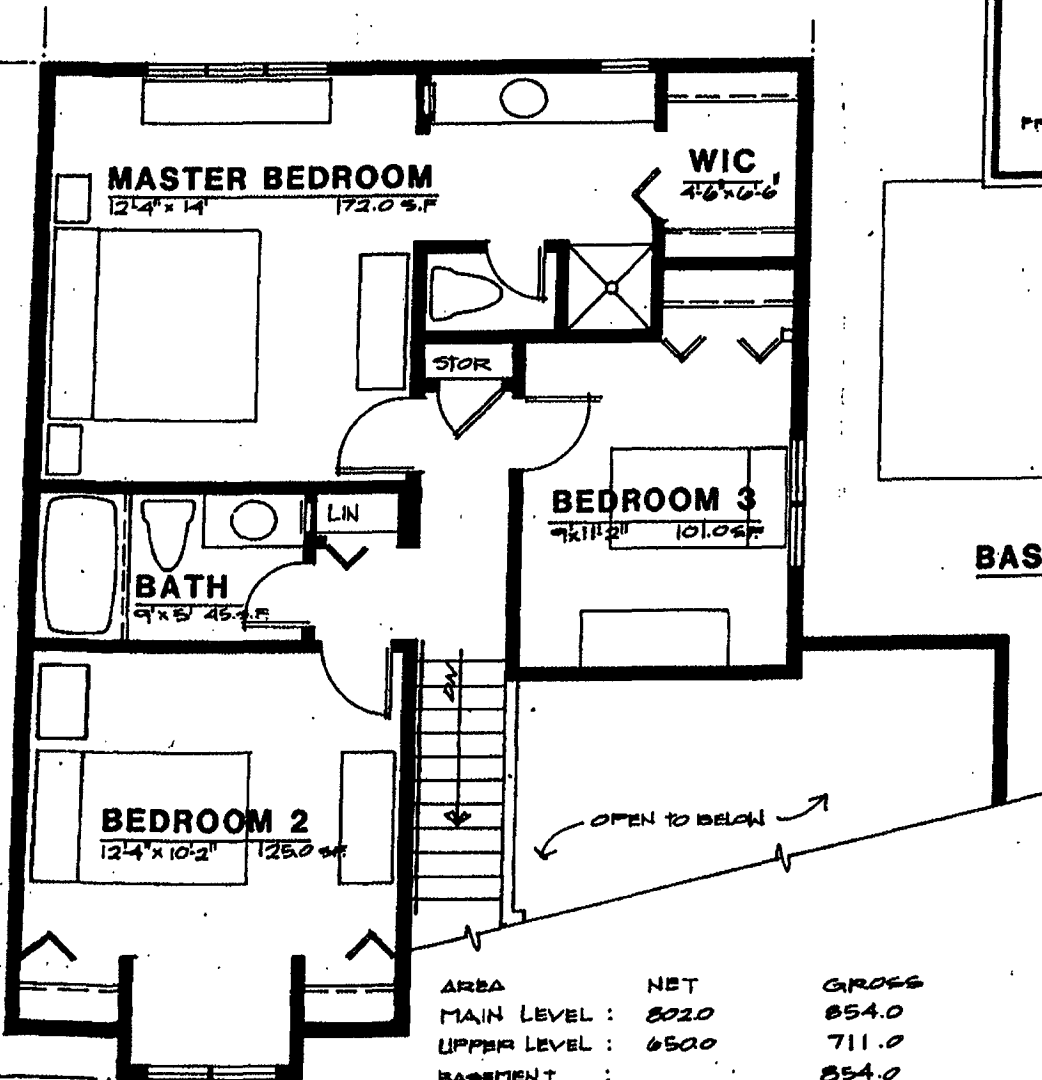
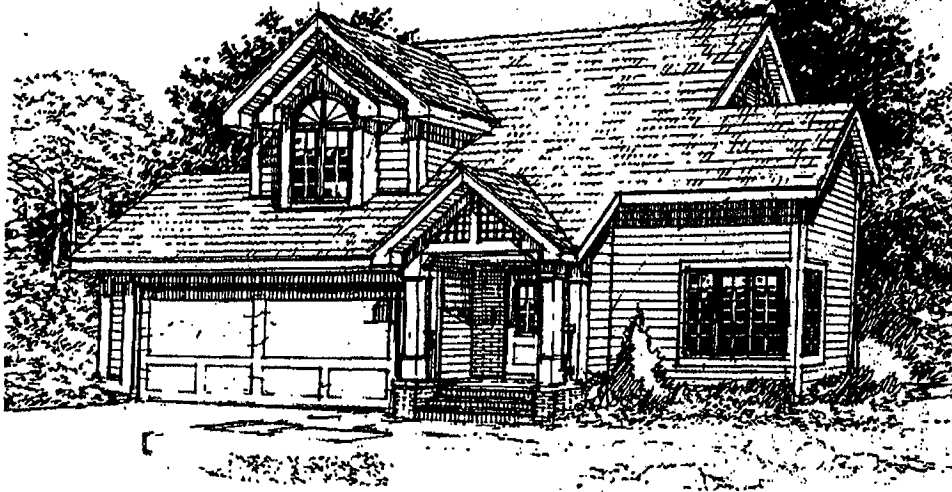
OFFICER THREE BEDROOM

ID NO. :89R34-9242.



MAIN FLOOR PLAN

14'-10"

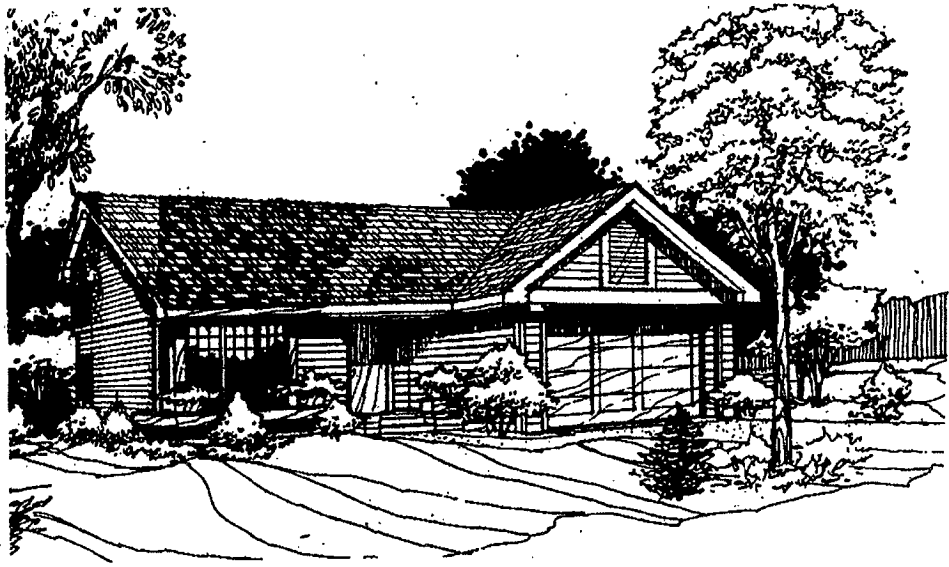


AREA	NET	GROSS
MAIN LEVEL :	802.0	854.0
UPPER LEVEL :	650.0	711.0
BASEMENT :		854.0
TOTAL :	1,452.0 SF	2,419.0 SF

854
1565

UPPER FLOOR PLAN

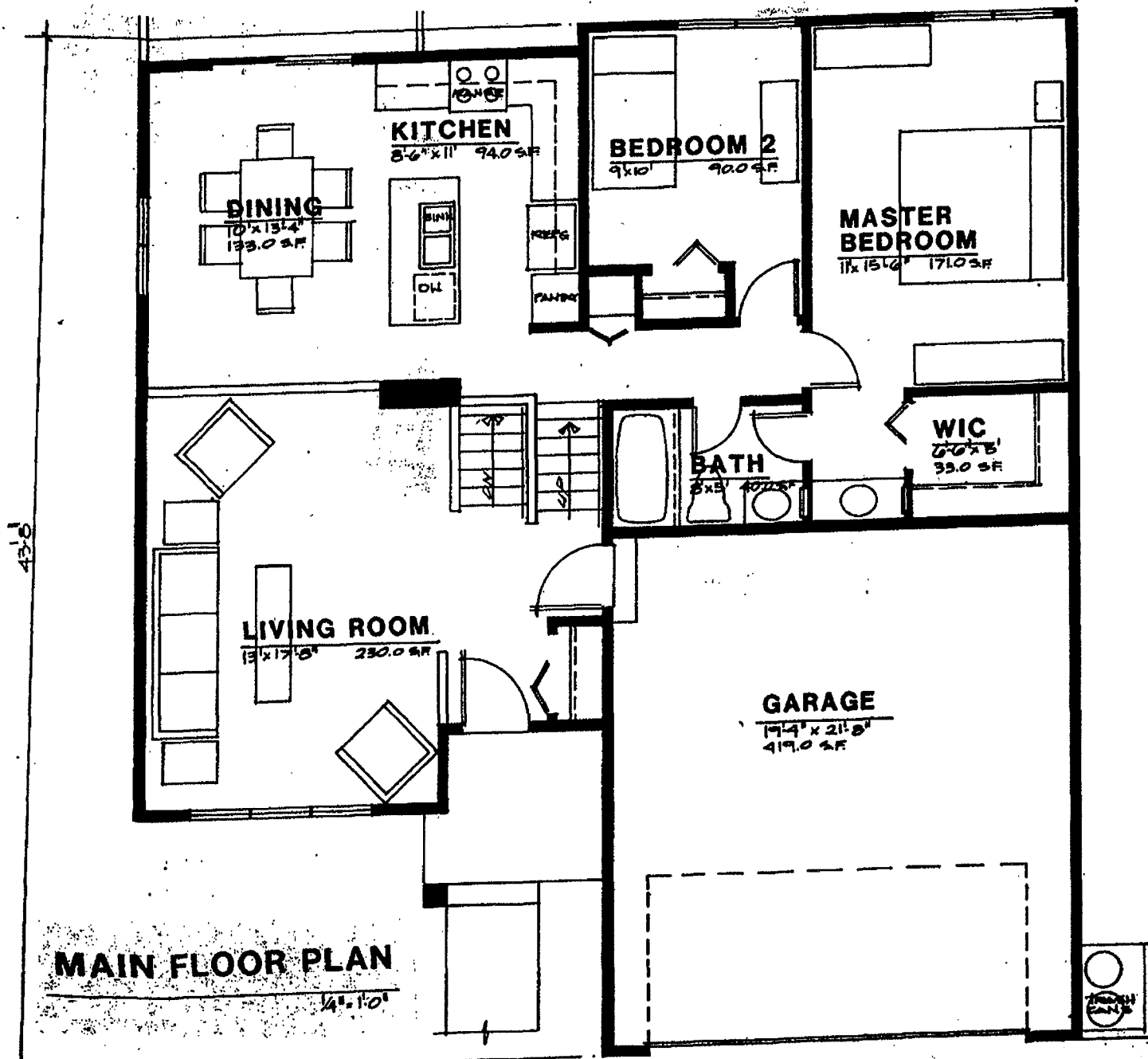
1/4"=10'

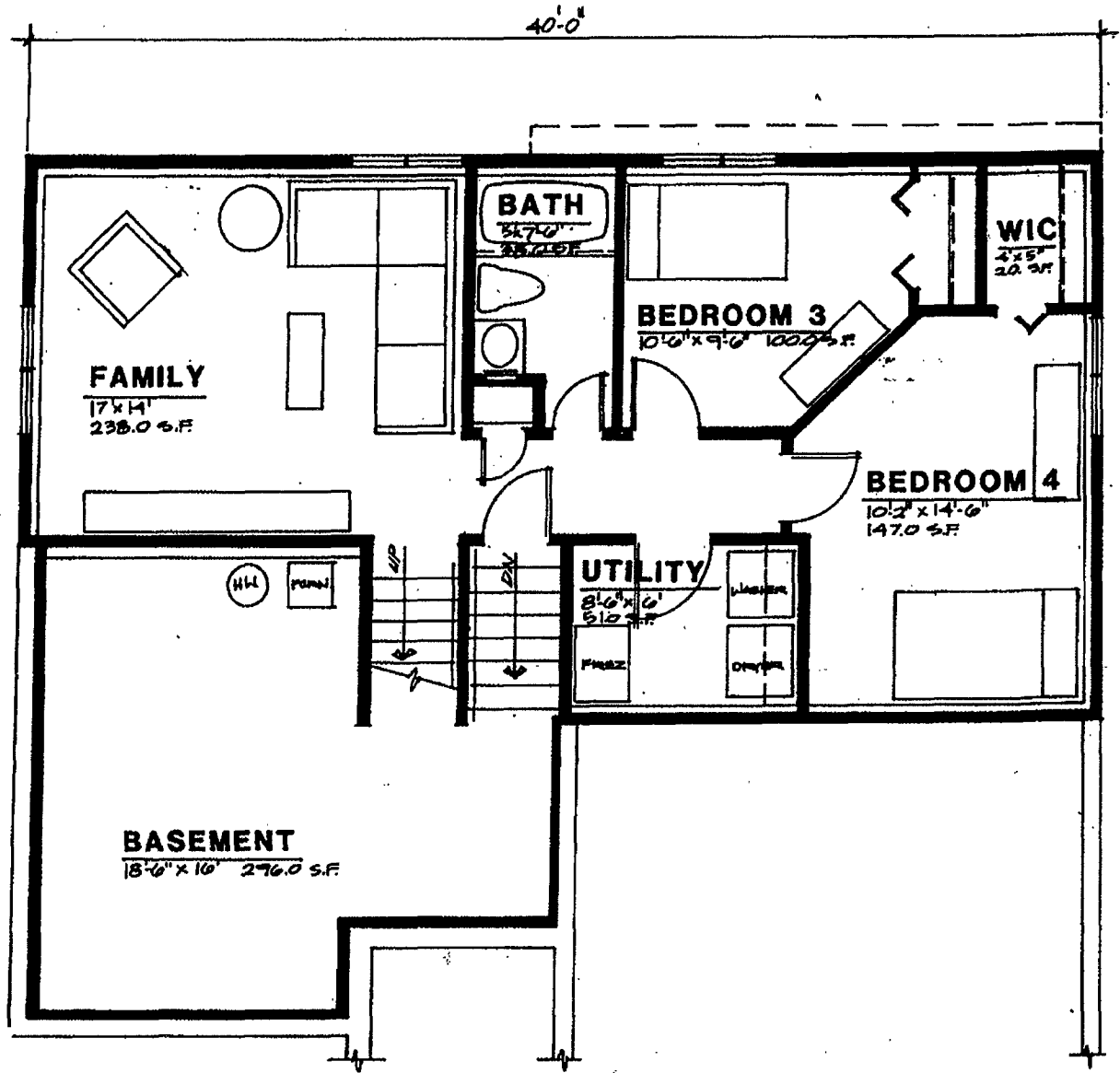


O-4 BLUE STEM

OFFICER-FOUR-BEDROOM

ID. NO.: 89R34-9242





AREA	NET	GROSS
MAIN LEVEL :	317.0 SF	339.0 SF
UPPER LEVEL :	689.0	736.0
LOWER LEVEL :	595.0	697.0
BASEMENT :		339.0
TOTAL	1,601.0 SF	2,111.0 SF

BLUE STEM - 04
LOWER FLOOR PLAN

1/4" = 10'