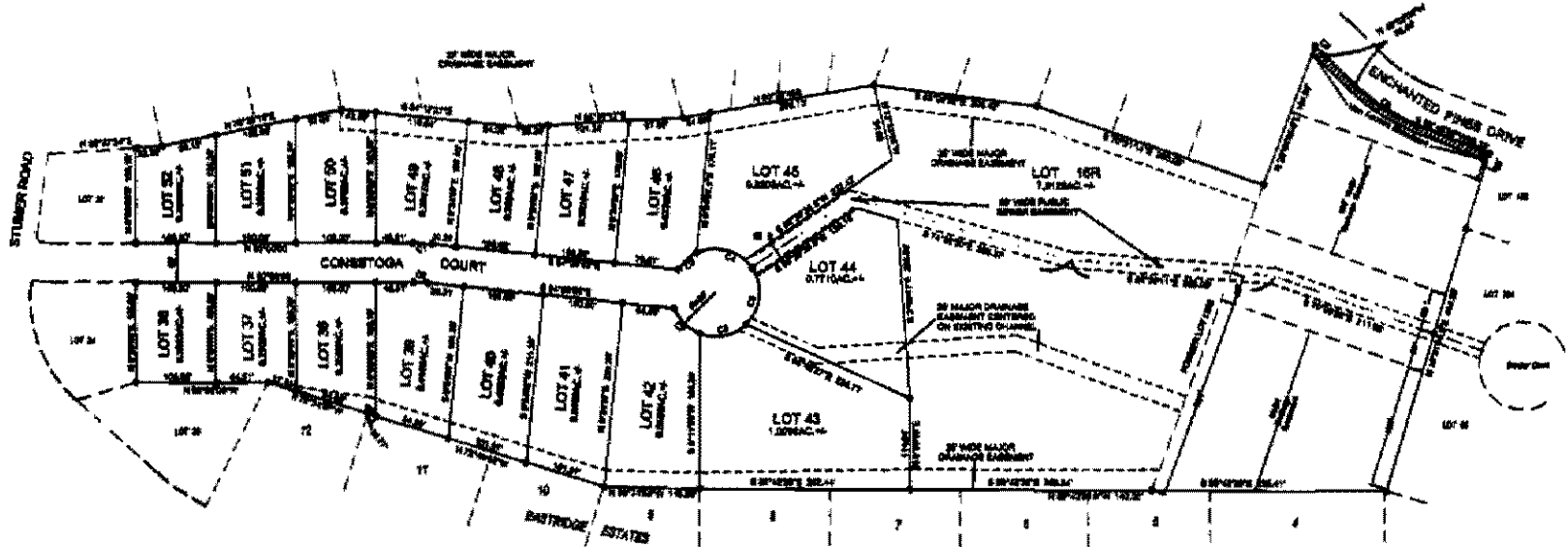
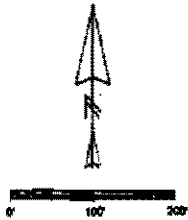


PRELIMINARY PLAT OF LOT 16R AND LOTS 36 THRU 52 IN BLOCK 1 OF PLM SUBDIVISION
 LOCATED IN NW1/4 OF SECTION 24, T1N, R7E, B.H.M. - RAPID CITY, PENNINGTON COUNTY, SOUTH DAKOTA



Area dedicated to public right-of-way by this plat = 0.9753 Ac. +/-

All Major Drainage Easements shown herein shall be free of all obstructions including but not limited to buildings, wall, fences, hedger, trees and shrubs. These easements grant to all public authorities the right to construct, operate, maintain, inspect and repair such improvements and structures as it deems expedient to facilitate drainage from any source.

If Major Utility & Drainage Easement: if on the interior side of all property lines adjacent to public right of way.

If minor drainage & utility easements are hereby established on the interior side of all lot lines, except where major drainage easements are located.

Curve	Chord Angle	Radius	Arc	Tangent	Chord	Chord Bearing
1	9°34'07.1"	224.80	23.13	11.57	23.13	S 87°02'36.6"E
2	9°34'07.1"	178.00	18.06	9.03	18.07	S 87°02'36.6"E
3	31°47'02.3"	65.00	30.36	18.66	30.17	N 48°15'17.0"E
4	89°48'02.7"	65.00	65.38	64.11	65.56	S 59°28'10.2"E
5	89°48'02.7"	65.00	65.36	34.20	65.26	S 14°45'38.4"W
6	89°45'41.0"	66.00	61.21	34.21	66.10	S 78°34'28.2"W
7	49°48'38.1"	66.00	47.09	28.56	45.61	N 45°02'31.0"W
8	29°44'28.0"	226.00	95.64	47.82	93.01	N 86°58'33.8"W
9	9°30'00"	174.00	19.38	9.68	19.37	N 48°13'02"W

Prepared by:
 Hanson Surveying & Mapping
 832 Horace Mann Drive
 Rapid City, SD 57701
 January 25, 2010
 Revised May 2010

RECEIVED

MAY 27 2010

Rapid City Growth
 Management Department