

10VR002

EXHIBIT 'A'

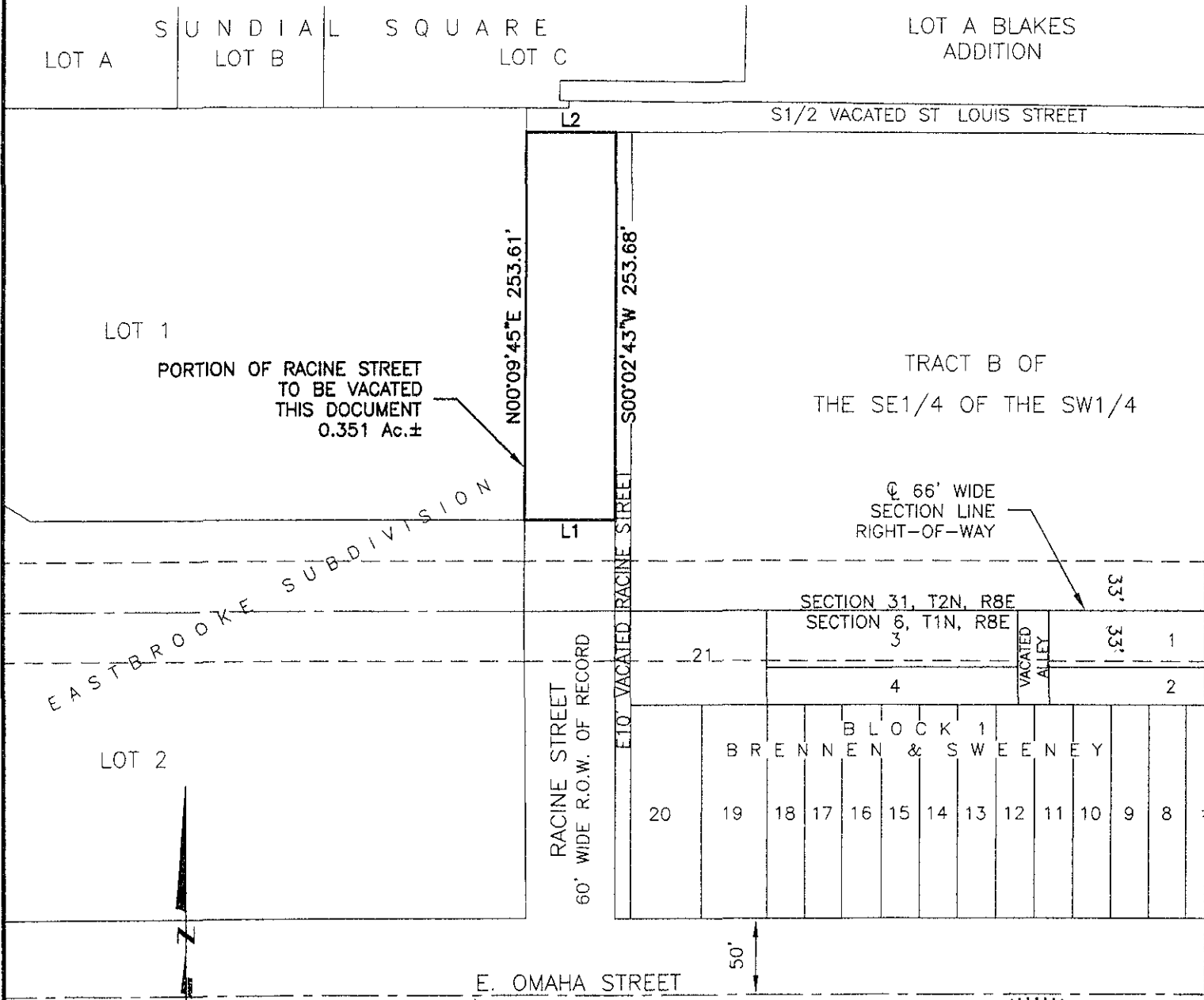
RECEIVED

VACATION OF A PORTION OF RACINE STREET

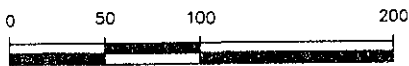
APR 09 2010

Rapid City Growth
Management Department

LOCATED IN THE SE1/4 OF THE SW1/4,
SECTION 31, T2N, R8E, BHM,
RAPID CITY, PENNINGTON COUNTY, SOUTH DAKOTA



APRIL 5, 2010



SCALE 1" = 100'

LINE	LENGTH	BEARING
L1	60.52'	N89°51'02"W
L2	60.00'	S89°54'49"E



CITY HALL 1903

RENNER & ASSOCIATES, LLC.

616 SIXTH ST. * RAPID CITY, SD 57701
 PHONE: 605/721-7310 * FAX: 605/721-7313
 EMAIL: GARY@RENNERASSOC.COM

