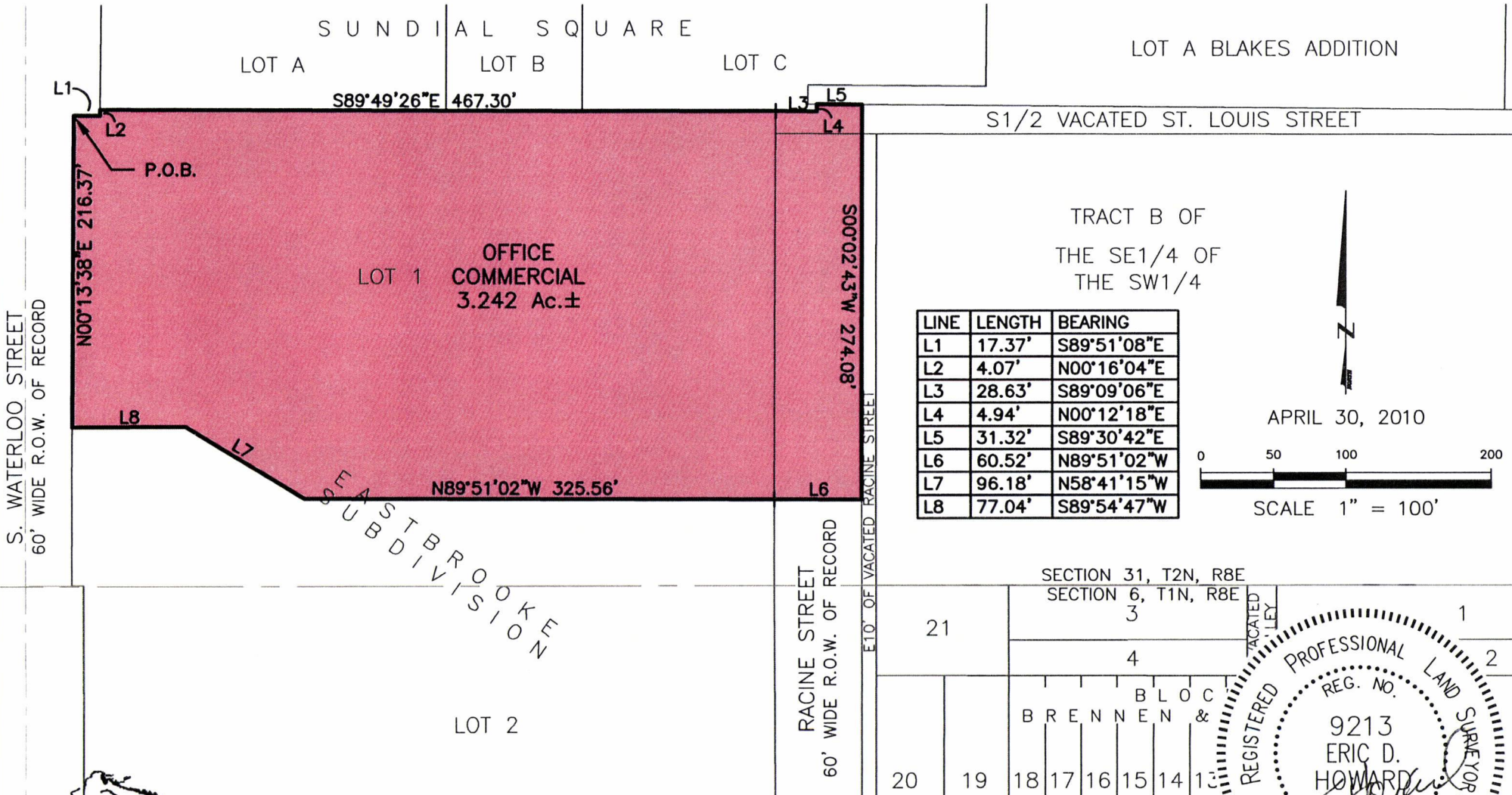
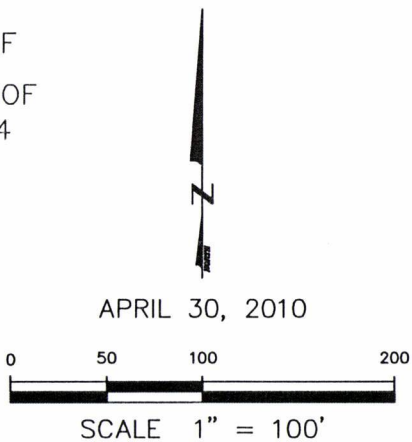


PROPOSED ZONING MAP

**LOT 1 OF EASTBROOKE SUBDIVISION, A PORTION OF
THE S1/2 OF VACATED ST. LOUIS STREET RIGHT-OF-WAY, &
A PORTION OF RACINE STREET RIGHT-OF-WAY STREET
SECTION 31, T2N, R8E, BHM,
RAPID CITY, PENNINGTON COUNTY, SOUTH DAKOTA**



LINE	LENGTH	BEARING
L1	17.37'	S89°51'08"E
L2	4.07'	N00°16'04"E
L3	28.63'	S89°09'06"E
L4	4.94'	N00°12'18"E
L5	31.32'	S89°30'42"E
L6	60.52'	N89°51'02"W
L7	96.18'	N58°41'15"W
L8	77.04'	S89°54'47"W



S. WATERLOO STREET
60' WIDE R.O.W. OF RECORD

RACINE STREET
60' WIDE R.O.W. OF RECORD

EASTBROOKE
SUBDIVISION



RENNER & ASSOCIATES, LLC.

616 SIXTH ST. * RAPID CITY, SD 57701
PHONE: 605/721-7310 * FAX: 605/721-7313
EMAIL: GARY@RENNERASSOC.COM

