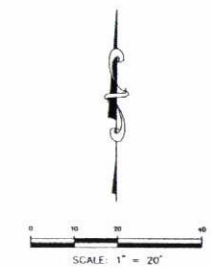
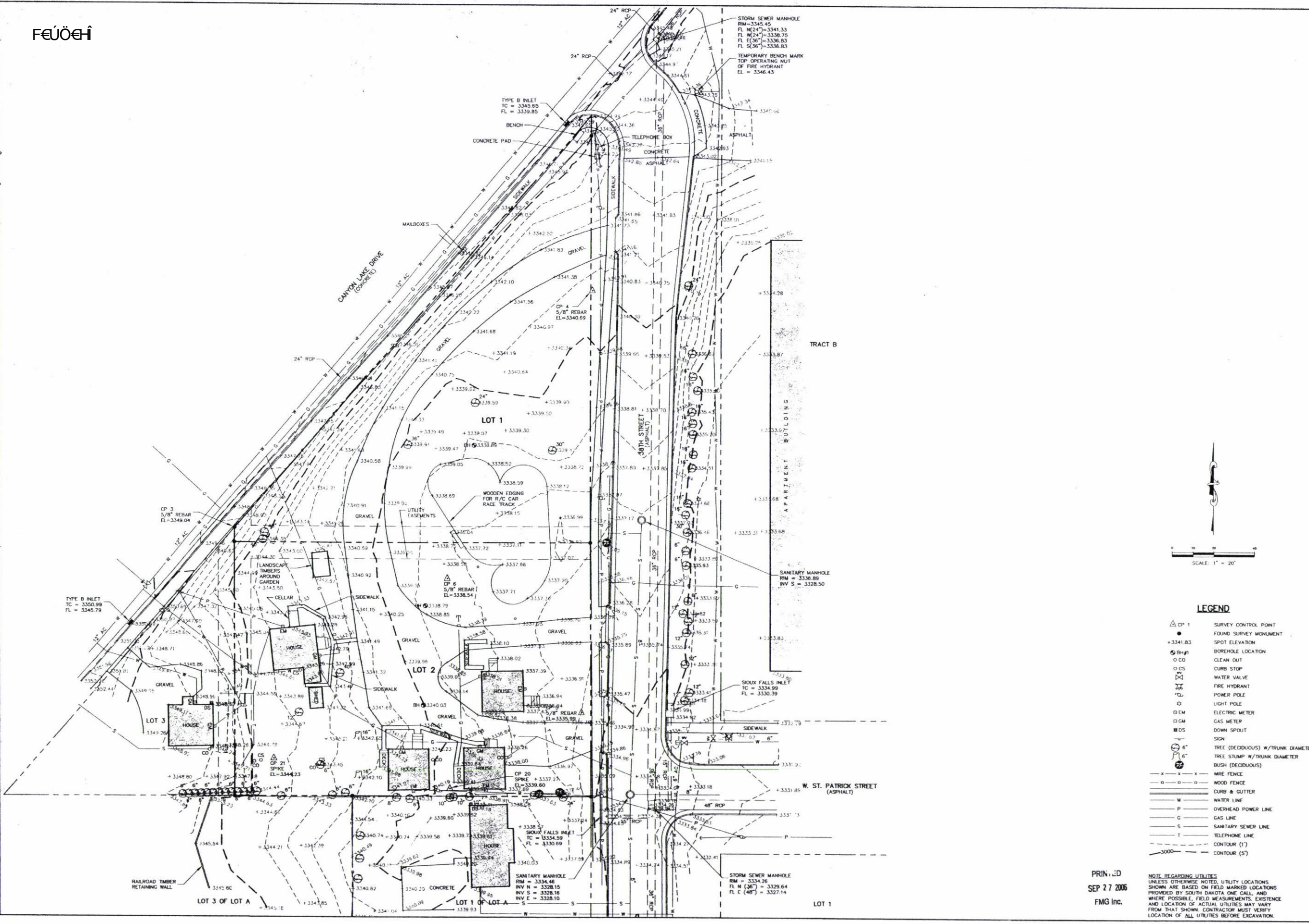


File Number: 8916
 Location: SW1/4 SECTION 4
 T1N, R7E, B1M
 Surveyed By: DW/MM/KS
 Date: MAY 2006
 Designed By: CDK
 Drawn By: KJS/JRK
 Checked By: JDF

FJORDS ICE CREAM & COFFEE SHOP
 CIVIL ENGINEERING SITE PLANS
 RAPID CITY, SD

Revision / Date
 Sheet Name:
TOPOGRAPHIC MAP
 Sheet Number:
C2



LEGEND

- △ CP 1 SURVEY CONTROL POINT
- FOUND SURVEY MONUMENT
- +3341.83 SPOT ELEVATION
- BH-1 BOREHOLE LOCATION
- CO CLEAN OUT
- CS CURB STOP
- W VALVE WATER VALVE
- FH FIRE HYDRANT
- P POWER POLE
- L LIGHT POLE
- EM ELECTRIC METER
- GM GAS METER
- DS DOWN SPOUT
- SIGN
- 6" TREE (DECIDUOUS) W/TRUNK DIAMETER
- 6" TREE STUMP W/TRUNK DIAMETER
- BUSH (DECIDUOUS)
- WRE FENCE
- WOOD FENCE
- CURB & GUTTER
- W WATER LINE
- P OVERHEAD POWER LINE
- G GAS LINE
- S SANITARY SEWER LINE
- T TELEPHONE LINE
- CONTOUR (1')
- CONTOUR (5')

PRINTED
 SEP 27 2006
 FMG Inc.

NOTE REGARDING UTILITIES
 UNLESS OTHERWISE NOTED, UTILITY LOCATIONS
 SHOWN ARE BASED ON FIELD MARKED LOCATIONS
 PROVIDED BY SOUTH DAKOTA ONE CALL, AND
 WHERE POSSIBLE, FIELD MEASUREMENTS. EXISTENCE
 AND LOCATION OF ACTUAL UTILITIES MAY VARY
 FROM THAT SHOWN. CONTRACTOR MUST VERIFY
 LOCATION OF ALL UTILITIES BEFORE EXCAVATION.

SEPTEMBER 2006