

Plat of Lots 14A and 14B of Lot 14 of Feay Reder Subdivision and Dedicated Right-of-Way

(formerly all of Lot 14 of Feay Reder Subdivision)
Located in the N1/2 NW1/4 of Section 36, T1N, R6E, BHM,
Pennington County, South Dakota

Prepared by:
Plek Land Surveying &
Consulting Engineers, Inc.
P.O. Box 8164
Rapid City, South Dakota 57709
605-348-1838
Project # 10-02-05

8' Utility and Minor Drainage Easements on
the interior side of all lot lines
Any major drainage easement shown hereon shall be kept
free of all obstructions including, but not limited to,
buildings, walls, fences, hedges, trees and shrubs. These
easements grant to all public authorities the right to
construct, operate, maintain, inspect and repair such
improvements and structures as it deems expedient
to facilitate drainage from any source

That portion of Sheridan Lake road containing 3,415 square
feet, as shown hereon, is hereby dedicated as public
right-of-way, however, such dedications shall not be
right-construed to mean a donation of the fee of said land

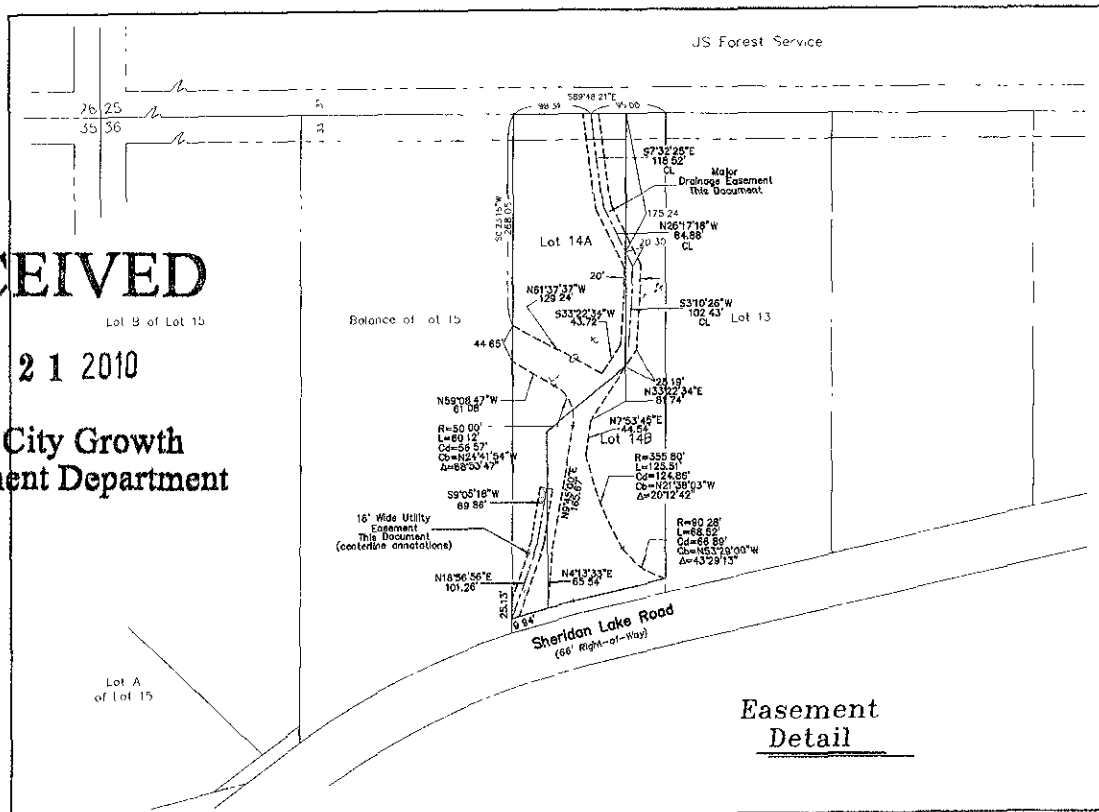
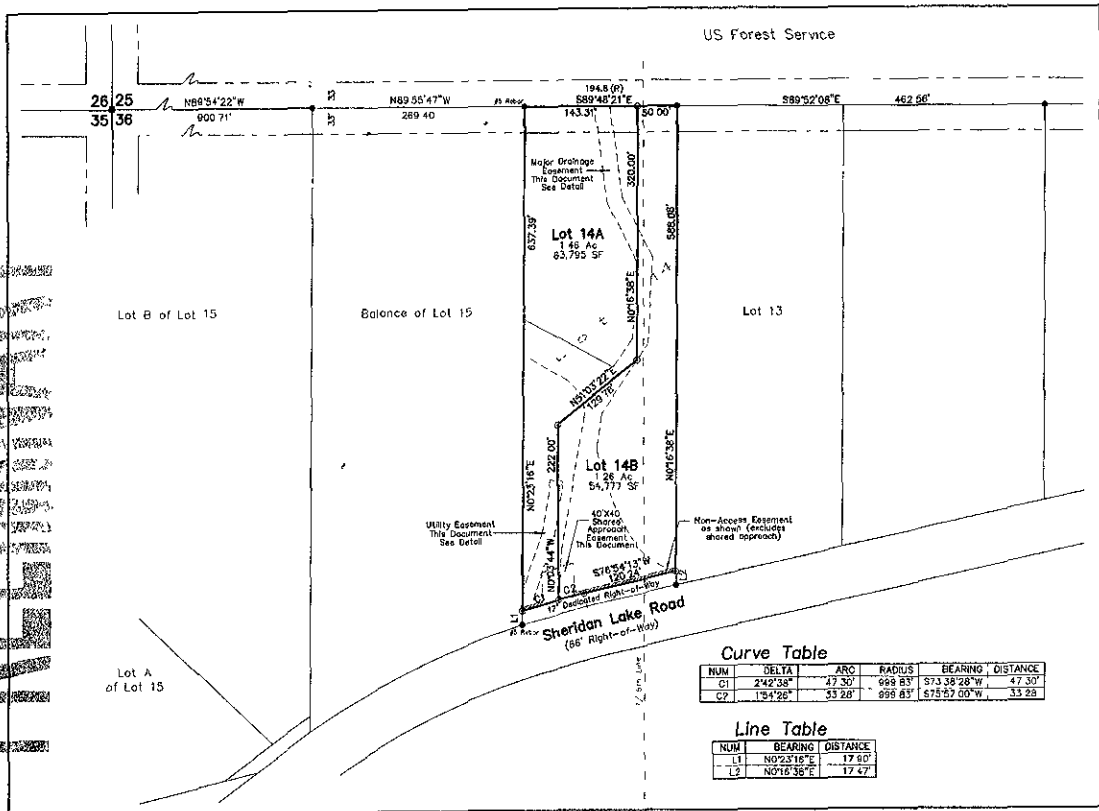
LEGEND

- = Found Survey Monument, LS 1771 or as noted
- = Found USFS Monument LS 5389
- ⊗ = Set Rebar with cap marked "RW Plek 6565"

See Plat Book 8 Page 93 for record lot
annotations



0 100 200
1" = 190'
March 11, 2010
Revised April 14, 2010
Basis of Bearings - Grid North
from GTS



RECEIVED

APR 21 2010

Rapid City Growth
Management Department