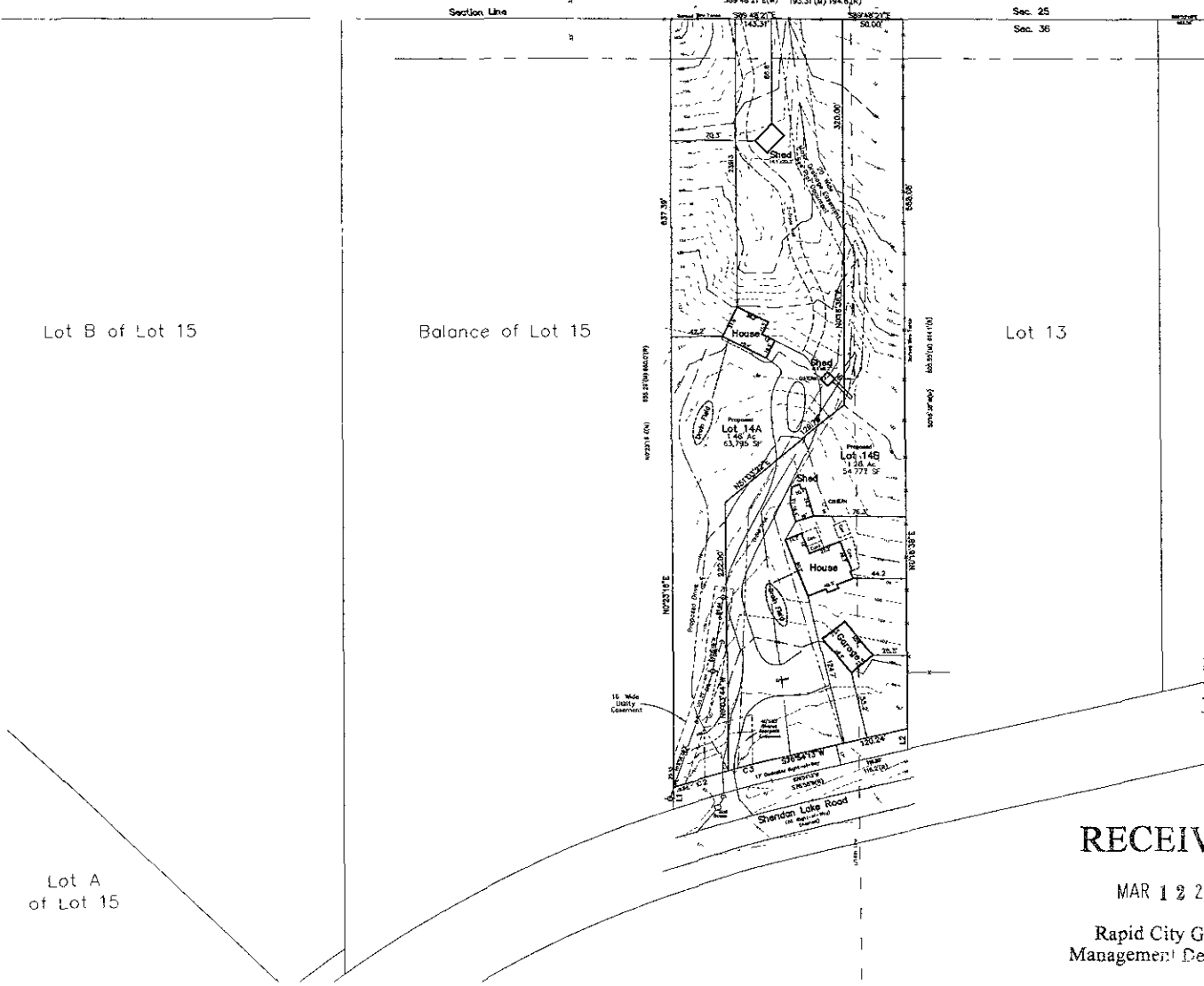


US Forest Service



1" = 40'
 March 1, 2010
 Basis of Bearings
 GPS Observation
 Meridian Datum
 Assumed

Fisk Land Surveying &
 Consulting Engineers, Inc.
 102 1/2 Main Street - P.O. Box 808
 Rapid City, SD 57702
 (605) 346-1112 (ph) (605) 346-1112 (fx)
 fsk@fisk-engineers.com



LEGEND

- = Water Valve
- = Utility Pole
- = Guy Wire
- = Fence Line as noted
- = Overhead Utility Line
- ⊕ = Found Survey Monument as noted
- ⊕ = Set Rebar with cap marked "RW Fisk 6565"

B Utility and Minor Drainage Easements
 on the interior side of all lot lines
 Minor detail not shown due to snow cover
 at the time of survey

Curve Table

Dist	Angle	Ch	PC	PT	PI	TS	SC
0+00	20.00	20.00	0+00	0+20	20.00	0+20	0+00
0+20	20.00	20.00	0+20	0+40	20.00	0+40	0+20

Line Table

Dist	Angle	Ch	PC	PT	PI	TS	SC
0+00	20.00	20.00	0+00	0+20	20.00	0+20	0+00

PRELIMINARY

RECEIVED

MAR 12 2010

Rapid City Growth
 Management Department

ONE CALL
 BEFORE DIGGING
 1-800-781-3174

Topographic Map and Boundary Survey
 Proposed Lot 14A and 14B
 Formerly all of Lot 14 of Feys Rader Subdivision
 Section 36, T1N, R6E, B1M,
 Pennington County, South Dakota

Surveyed by M.L.B.L.
 Date 2/24/10
 Drawn by RWF/BL
 Date 3/1/10
 Checked by RWF
 Revisions

Project No
 10-02-06

Site
 Plan