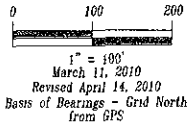


Plat of Lots 14A and 14B of Lot 14 of Feay Reder Subdivision and Dedicated Right-of-Way
(formerly all of Lot 14 of Feay Reder Subdivision)

Located in the N1/2 NW1/4 of Section 36, T1N, R6E, BHM, Pennington County, South Dakota



Prepared by:
Flak Land Surveying & Consulting Engineers, Inc.
P.O. Box 8164
Rapid City, South Dakota 57700
605-346-1838
Project # 10-02-05

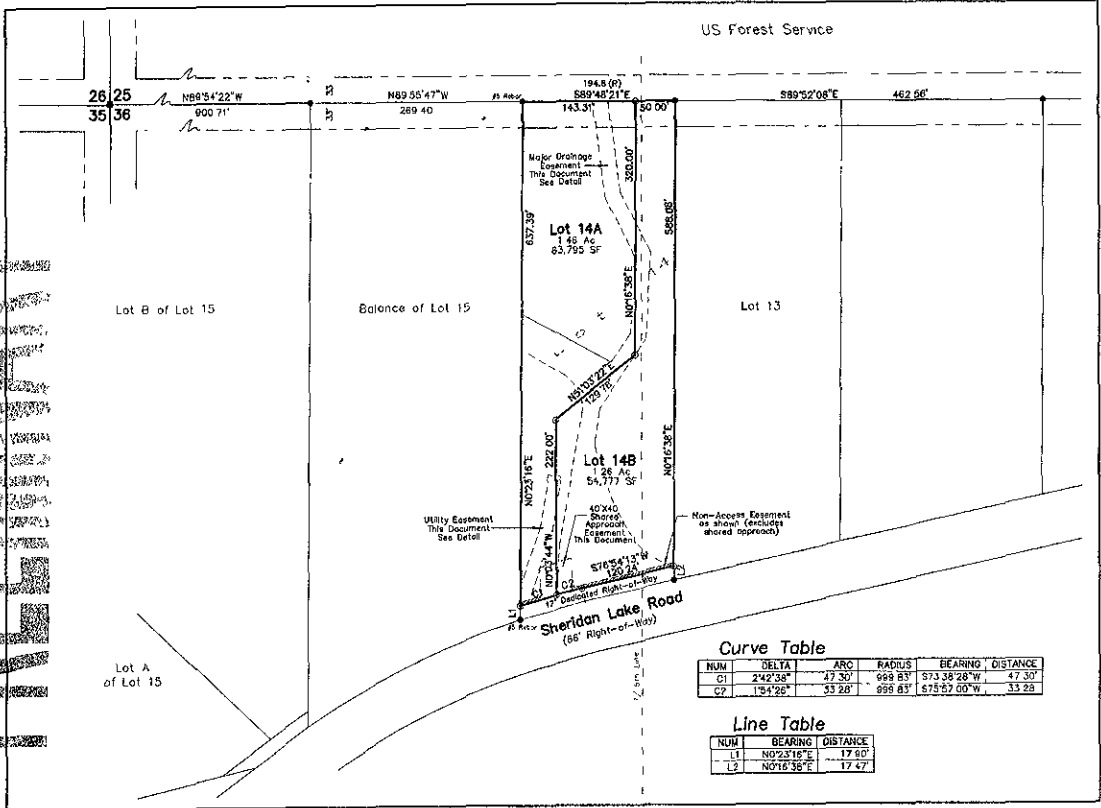
8' Utility and Minor Drainage Easements on the interior side of all lot lines
Any major drainage easement shown hereon shall be kept free of all obstructions including, but not limited to, buildings, walls, fences, hedges, trees and shrubs. These easements grant to all public authorities the right to construct, operate, maintain, inspect and repair such improvements and structures as it deems expedient to facilitate drainage from any source

That portion of Sheridan Lake road containing 3,415 square feet, as shown hereon, is hereby dedicated as public right-of-way, however, such dedications shall not be right-continued to mean a donation of the fee of said land

LEGEND

- = Found Survey Monument, LS 1771 or as noted
- = Found USFS Monument LS 5389
- ⊙ = Set Rebar with cap marked "RW Flak 6565"

See Plat Book B Page 93 for record lot annotations



Curve Table

NUM	DELTA	ARC	RADIUS	BEARING	DISTANCE
C1	242.58°	47.30'	999.85'	S73.38 28" W	47.30'
C2	154.26°	53.28'	999.85'	S75.57 00" W	53.28'

Line Table

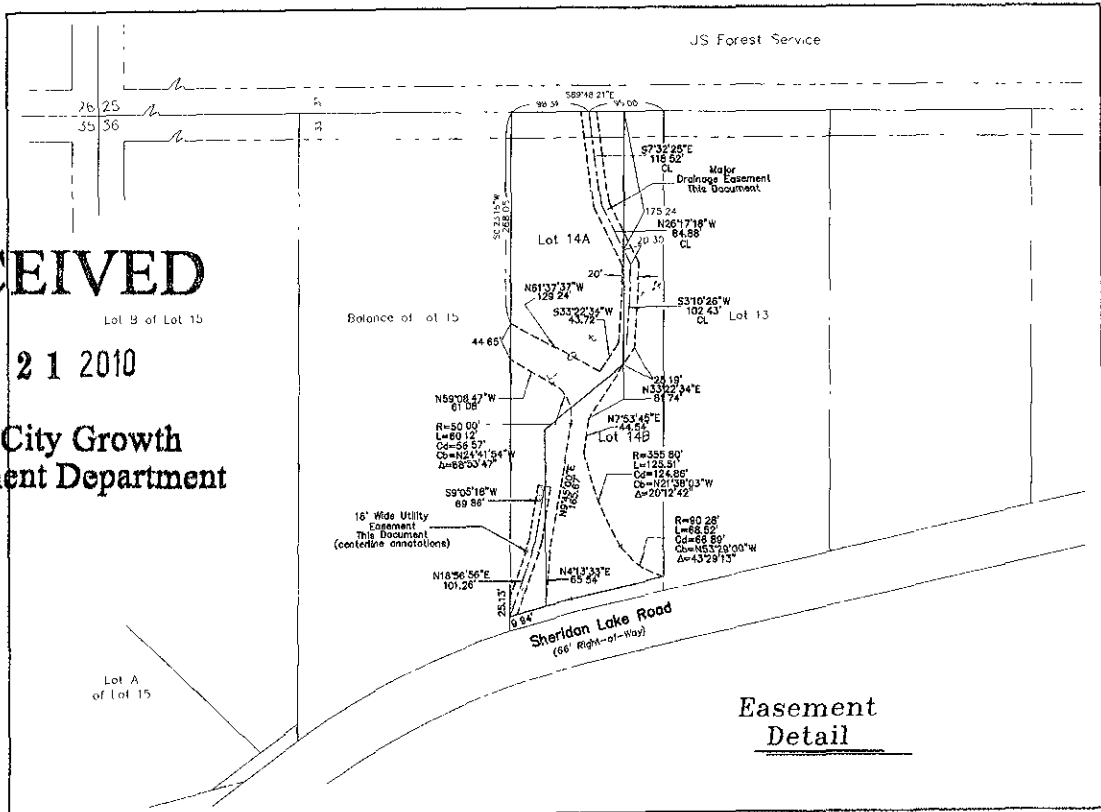
NUM	BEARING	DISTANCE
L1	N0°23'16"E	17.60'
L2	N0°18'38"E	17.47'

RECEIVED

RECEIVED

APR 21 2010

Rapid City Growth Management Department



Easement Detail