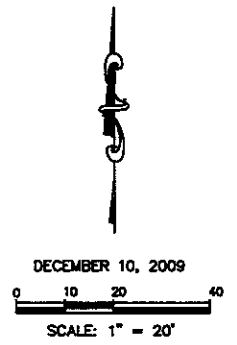
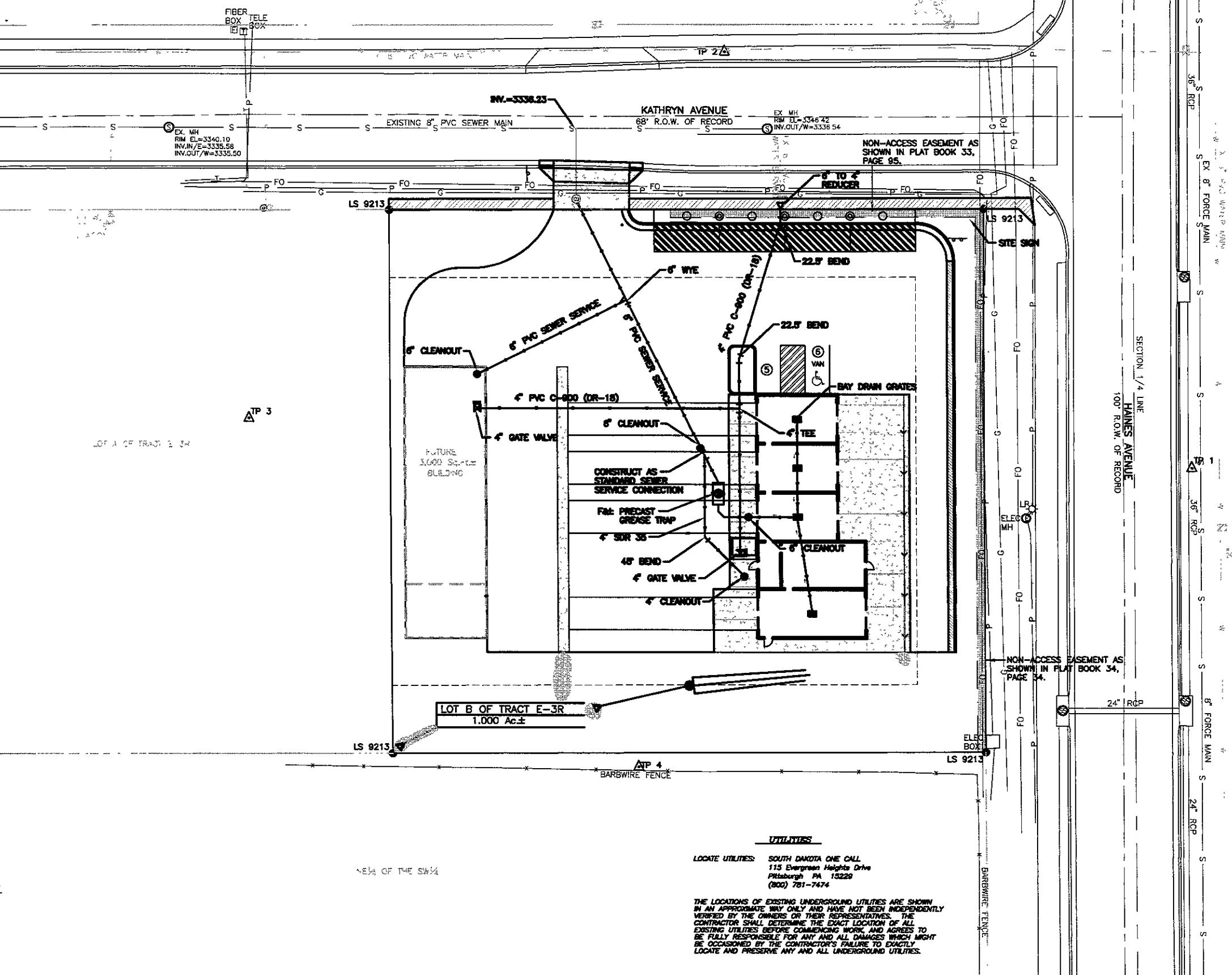


TRACT C-2



**SEWER SERVICE FURNISH AND INSTALL NOTES**

- F&I: 204.40 L.F. 6" SDR 35 (S=2%MIN)
  - F&I: 51.80 L.F. 4" SDR 35 (S=2%MIN)
  - F&I: 6" WYE
  - F&I: 6" CLEANOUTS (3 TOTAL)
  - F&I: 4" CLEANOUTS (1 TOTAL)
  - F&I: 45° BEND
  - F&I: 2,000 GALLON PRE-CAST GREASE TRAP
- CONNECT TO EX. SEWER SERVICE STUB.

**WATER SERVICE FURNISH AND INSTALL NOTES**

- F&I: 224.73 L.F. 4" PVC C-900 (DR-18)
  - F&I: 6" TO 4" REDUCER
  - F&I: 22.5° BENDS (2 TOTAL)
  - F&I: 4" TEE
  - F&I: 4" GATE VALVE (2 TOTAL)
- CONNECT TO EX. WATER SERVICE

NOTE: CONSTRUCT WATER AND SEWER SERVICE AS PER THE 2007 EDITION OF THE RAPID CITY STANDARD SPECIFICATIONS & DETAILS

**UTILITIES**

LOCATE UTILITIES: SOUTH DAKOTA ONE CALL  
 115 Evergreen Heights Drive  
 Pittsburgh PA 15229  
 (800) 781-7474

THE LOCATIONS OF EXISTING UNDERGROUND UTILITIES ARE SHOWN IN AN APPROXIMATE WAY ONLY AND HAVE NOT BEEN INDEPENDENTLY VERIFIED BY THE OWNERS OR THEIR REPRESENTATIVES. THE CONTRACTOR SHALL DETERMINE THE EXACT LOCATION OF ALL EXISTING UTILITIES BEFORE COMMENCING WORK, AND AGREES TO BE FULLY RESPONSIBLE FOR ANY AND ALL DAMAGES WHICH MIGHT BE OCCASIONED BY THE CONTRACTOR'S FAILURE TO EXACTLY LOCATE AND PRESERVE ANY AND ALL UNDERGROUND UTILITIES.

**SPELICH Consulting, Inc.**  
 127 Columbia St. Suite 300  
 Rapid City, SD 57701  
 (605) 771-1151 ext. 600  
 Fax: (605) 771-1152  
 www.spelich.com

REVISIONS	REVISION	DATE

**SITE PLAN**  
 LOT B OF TRACT E-3R OF McMAHON SUBDIVISION

C:\Projects\10413104 EGBT.dwg UTILITIES\_4/22/2010 8:44:21 AM