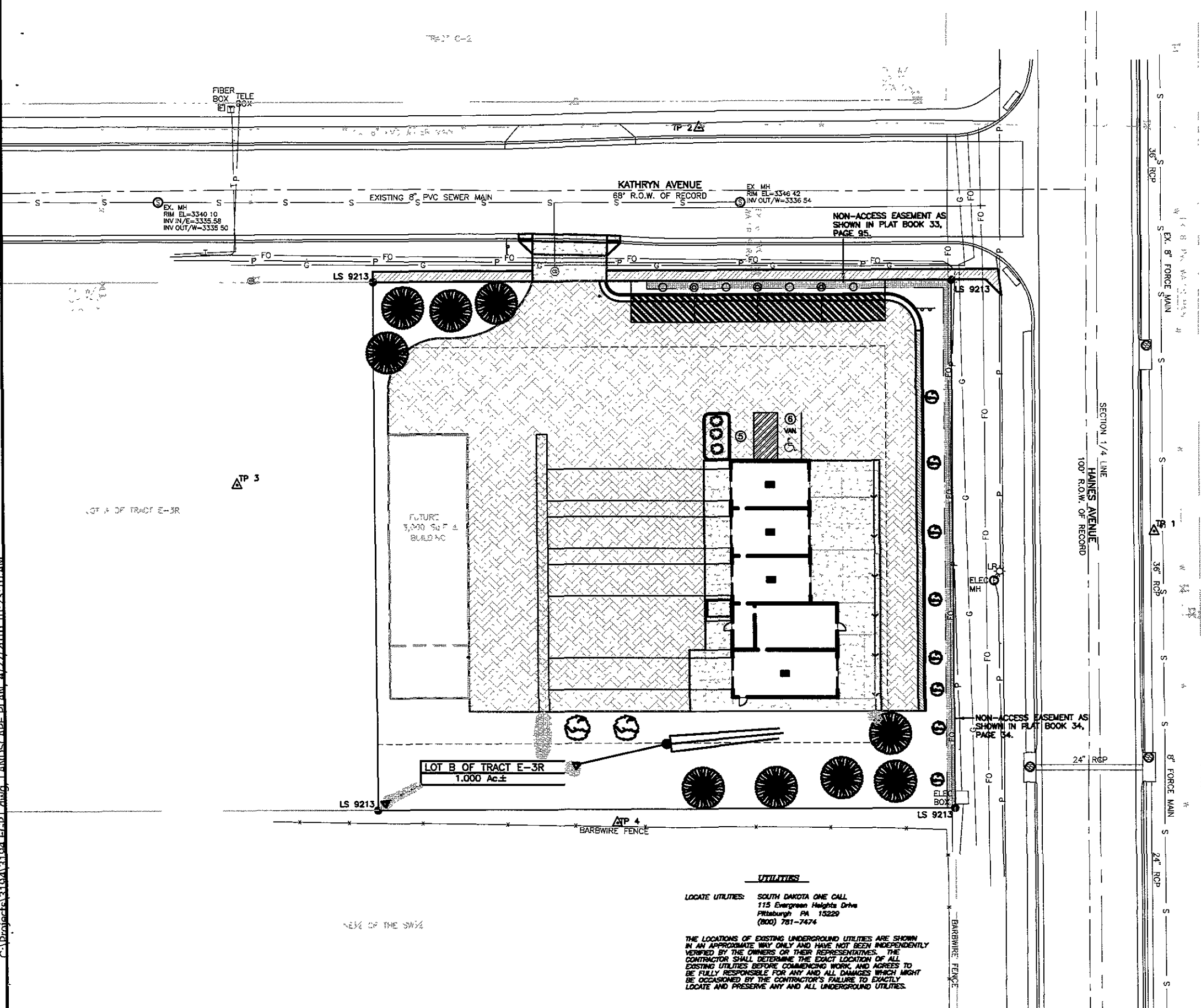


FEÜÖHG



MARCH 26, 2010
 SCALE: 1" = 20'





TOTAL SURFACE AREA
 TOTAL AREA = 43,521 Sq. Ft.±
 BUILDING AREA = 3,058 Sq. Ft.
 FUTURE BUILDING AREA = 3,000 Sq. Ft.

LANDSCAPING POINT REQUIREMENTS

43,521 Sq. Ft.±	TOTAL AREA
- 3,058 Sq. Ft.	BUILDING AREA
- 3,000 Sq. Ft.	FUTURE BUILDING AREA
37,463 Sq. Ft.	POINTS REQUIRED
18,732 Sq. Ft.	POINTS REQUIRED WITHIN 20' OF PARKING LOT

LANDSCAPING POINTS PROVIDED

1,336 Sq. Yd @ 10 pts/Sq. Yd	=	13,360 pts (GRASS)
9 @ 2,000 pts	=	18,000 pts (SILVER MAPLE TREES)
2 @ 1,000 pts	=	2,000 pts (HONEY LOCUST TREES)
8 @ 500 pts	=	4,000 pts (SMALL TREES)
3 @ 250 pts	=	750 pts (SHRUBS)
		38,110 pts PROVIDED POINTS

-  SHRUBS
-  SMALL TREES
-  HONEY LOCUST TREES
-  SILVER MAPLE TREES

UTILITIES
 LOCATE UTILITIES: SOUTH DAKOTA ONE CALL
 115 Evergreen Heights Drive
 Pittsburgh PA 15229
 (800) 781-7474

THE LOCATIONS OF EXISTING UNDERGROUND UTILITIES ARE SHOWN IN AN APPROXIMATE WAY ONLY AND HAVE NOT BEEN INDEPENDENTLY VERIFIED BY THE OWNERS OR THEIR REPRESENTATIVES. THE CONTRACTOR SHALL DETERMINE THE EXACT LOCATION OF ALL EXISTING UTILITIES BEFORE COMMENCING WORK AND AGREES TO BE FULLY RESPONSIBLE FOR ANY AND ALL DAMAGES WHICH MIGHT BE OCCASIONED BY THE CONTRACTOR'S FAILURE TO EXACTLY LOCATE AND PRESERVE ANY AND ALL UNDERGROUND UTILITIES.

SPERLICH CONSULTING, Inc.
 1700 S. W. 10th St., Suite 200, Ft. Lauderdale, FL 33304
 Phone: (954) 571-1100
 Fax: (954) 571-1101
 Email: info@sperrlich.com
 Website: www.sperrlich.com

REVISION	DATE	DESCRIPTION

LEGAL DESCRIPTION:
 LOT B OF TRACT E-3R
 AS SHOWN IN THE PLAN OF THE MAP
 LOCATED IN THE BOOK OF THE MAPS
 RECORDED IN THE PUBLIC RECORDS OF
 DADE COUNTY, FLORIDA, BOOK 17, PAGE 17,048
 SURVEYED BY SGT. BRYAN BIV. CAP.

LANDSCAPING PLAN
 LOT B OF TRACT E-3R OF McMAHON SUBDIVISION

C:\Projects\3194\3194.LANDSCAPE.PLAN_4/22/2010 10:22:10.AM