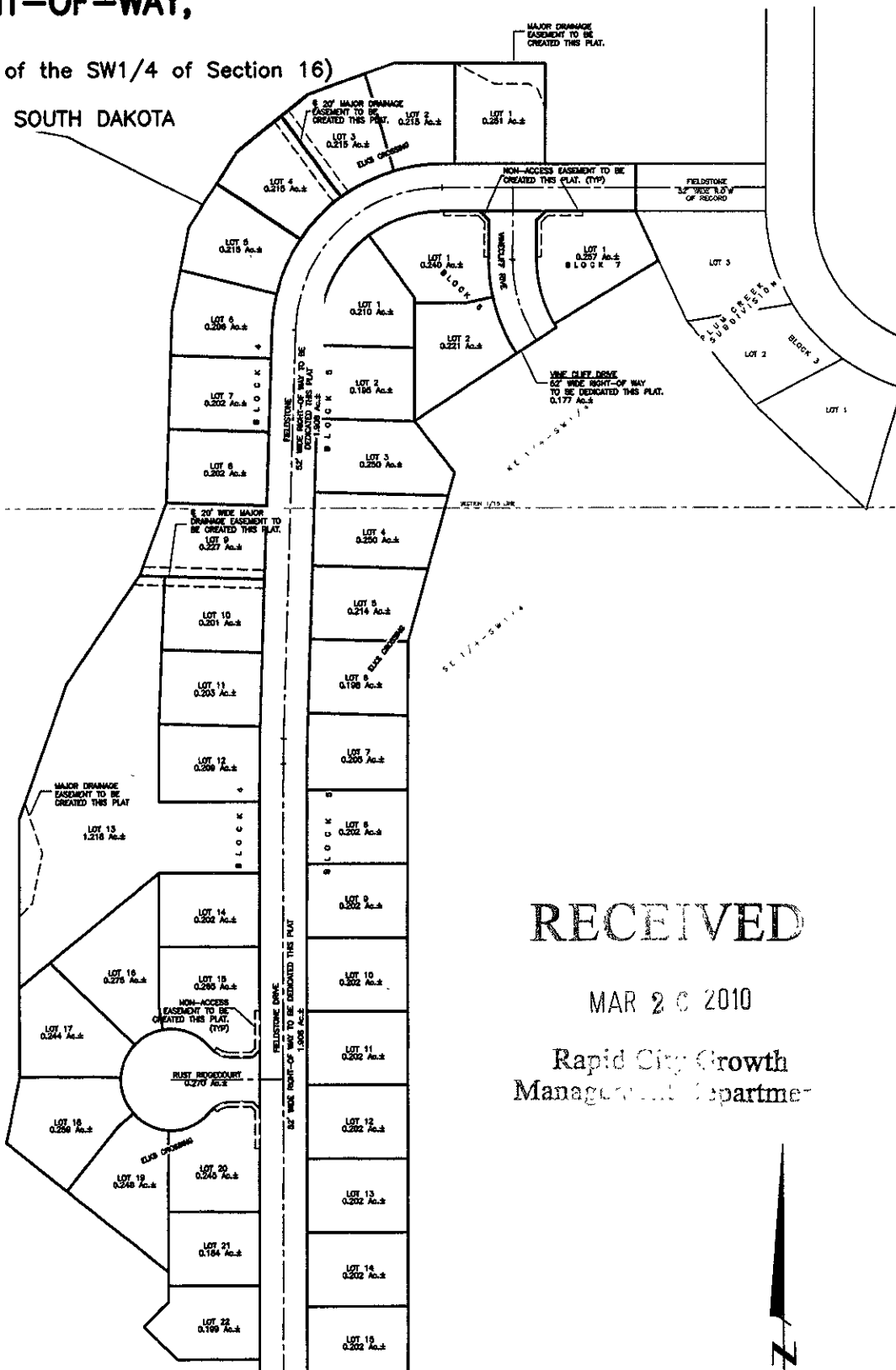


PLAT OF

LOTS 1-22 OF BLOCK 4, LOTS 1-15 OF BLOCK 5, LOTS 1-2 OF BLOCK 6, LOT 1 OF BLOCK 7, RUST RIDGE COURT RIGHT-OF-WAY, FIELDSTONE DRIVE RIGHT-OF-WAY, AND VINECLIFF DRIVE RIGHT-OF-WAY,

(formerly a portion of the E1/2 of the SW1/4 of Section 16)
SECTION 16, T1N, R8E, BHM
RAPID CITY, PENNINGTON COUNTY, SOUTH DAKOTA



RECEIVED

MAR 20 2010

Rapid City Growth
Management Department



Renner & Associates, LLC.

616 Sixth St. * Rapid City, SD 57701 * 605/721-7310
 FAX: 605/721-7313 * E-MAIL: Gary@RennerAssoc.com
 * Spearfish 605/717-0016 *



CITY HALL 1903