

RECEIVED

MAR 29 2010

Rapid City Growth Management Department

DECEMBER 10, 2009  
SCALE: 1" = 20'

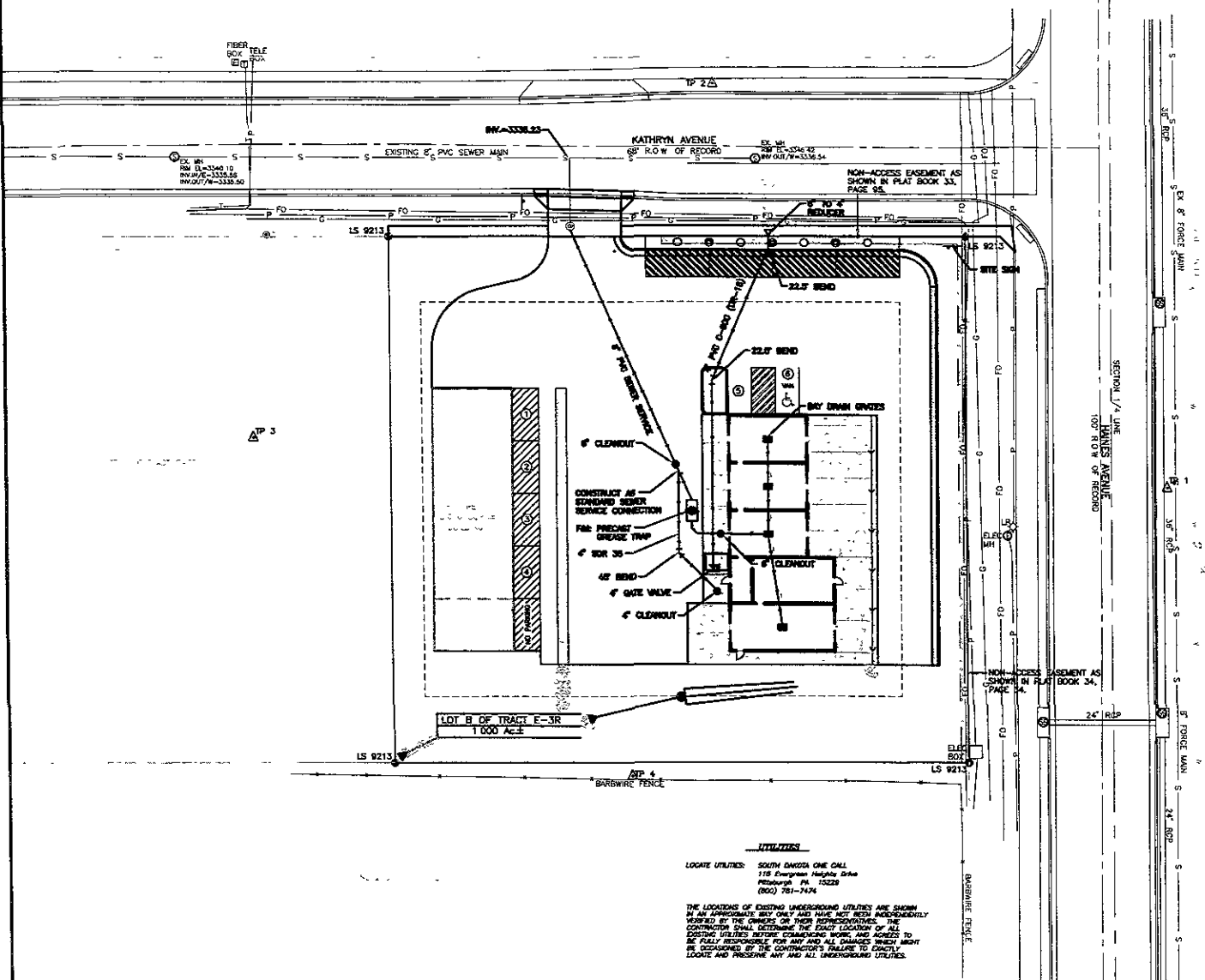
SPERLICH Consulting, Inc.  
1111 S. GARDNER ST.  
RAPID CITY, SD 57701  
TEL: 605.343.1111  
FAX: 605.343.1112

PRELIMINARY  
NOT FOR  
CONSTRUCTION  
CITY REVIEW  
ONLY

REVISIONS	DATE

LEGAL DESCRIPTION  
LOT B OF TRACT E-3R OF MICHIGAN SUBDIVISION  
SECTION 17, T4N, R10W, SD 57701  
PROJECT NO. 3194  
SHEET 4 OF 12

PROJECT NUMBER 3194  
SHEET 4 / 12



**SEWER SERVICE FURNISH AND INSTALL NOTES**  
 F&I: 143.27 L.F. 6" SDR 35 (S=2%MIN)  
 F&I: 51.80 L.F. 4" SDR 35 (S=2%MIN)  
 F&I: 6" CLEANOUTS (2 TOTAL)  
 F&I: 4" CLEANOUTS (1 TOTAL)  
 F&I: 45° BEND  
 F&I: 2,000 GALLON PRE-CAST GREASE TRAP  
 CONNECT TO EX. SEWER SERVICE STUB.

**WATER SERVICE FURNISH AND INSTALL NOTES**  
 F&I: 129.87 L.F. 6" PVC C-900 (DR-18)  
 F&I: 6" TO 4" REDUCER  
 F&I: (2) 22.5° BENDS  
 F&I: 4" GATE VALVE  
 CONNECT TO EX. WATER SERVICE

NOTE: CONSTRUCT WATER AND SEWER SERVICE AS PER THE 2007 EDITION OF THE RAPID CITY STANDARD SPECIFICATIONS & DETAILS

**UTILITIES**  
 LOCATE UTILITIES: SOUTH DAKOTA ONE CALL  
 115 Evergreen Highway Drive  
 Rapid City, SD 57701  
 (605) 781-7474

THE LOCATIONS OF EXISTING UNDERGROUND UTILITIES ARE SHOWN IN AN APPROXIMATE MANNER AND HAVE NOT BEEN INDEPENDENTLY VERIFIED BY THE OWNER OR THEIR REPRESENTATIVES. THE CONTRACTOR SHALL VERIFY THE LOCATION OF ALL UTILITIES PRIOR TO ANY CONSTRUCTION. ALL EXISTING UTILITIES BEFORE COMMENCING WORK, AND AGREE TO ACCEPT FULL RESPONSIBILITY FOR ANY AND ALL DAMAGES WHICH MIGHT BE OCCASIONED BY THE CONTRACTOR'S FAILURE TO EXCAVATE, LOCATE AND PRESERVE ANY AND ALL UNDERGROUND UTILITIES.