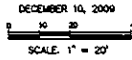


RECEIVED

MAR 29 2010

Rapid City Growth Management, Inc. partner.



SPERLICH Consulting, Inc.



PRELIMINARY NOT FOR CONSTRUCTION CITY REVIEW ONLY

REVISIONS:

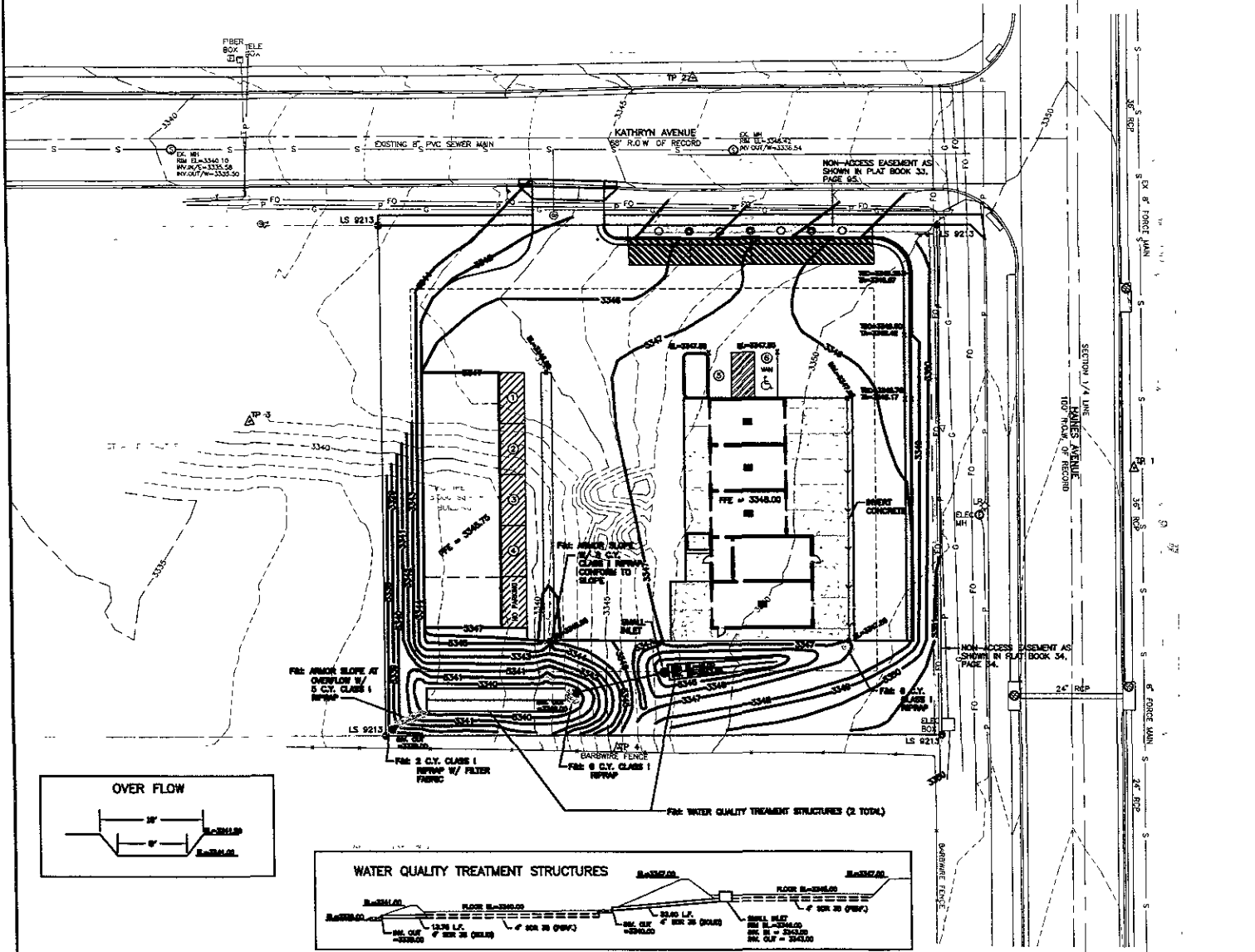
NO.	DATE	DESCRIPTION

BY:

--	--

LEGAL DESCRIPTION:

GRADE PLAN  
LOT B OF TRACT E-JR OF MICHIGAN SUBDIVISION



**GRADING SPECIFICATIONS**

ALL EXISTING GRADES SHALL BE MAINTAINED UNLESS OTHERWISE SHOWN ON THIS PLAN.

NO.	DATE	DESCRIPTION

ALL EXISTING UTILITIES SHALL BE MAINTAINED UNLESS OTHERWISE SHOWN ON THIS PLAN.

**STORM SEWER FURNISH AND INSTALL NOTES**

- F&I: 47.36 L.F. 6" SDR (SOLID)
- F&I: 301.25 L.F. 4" SDR 35 (PERF.)
- F&I: SMALL INLET
- RIM EL.=3346.00
- INV. IN=3343.00
- INV. OUT=3343.00

**UTILITIES**  
 LOCATE UTILITIES: SOUTH DAKOTA ONE CALL  
 113 Evergreen Heights Drive  
 Pittsburgh, PA 15229  
 (402) 781-7424

THE LOCATION OF EXISTING UNDERGROUND UTILITIES ARE SHOWN IN AN APPROXIMATE MANNER ONLY AND HAVE NOT BEEN INDEPENDENTLY VERIFIED BY THE ENGINEER OR THEIR SUBCONSULTANTS. THE CONTRACTOR SHALL DETERMINE THE EXACT LOCATION OF ALL UTILITIES. THE CONTRACTOR SHALL BE FULLY RESPONSIBLE FOR ANY AND ALL DAMAGES CAUSED BY COLLISIONS WITH UTILITIES. THE CONTRACTOR SHALL BE FULLY RESPONSIBLE FOR ANY AND ALL DAMAGES CAUSED BY COLLISIONS WITH UTILITIES.

