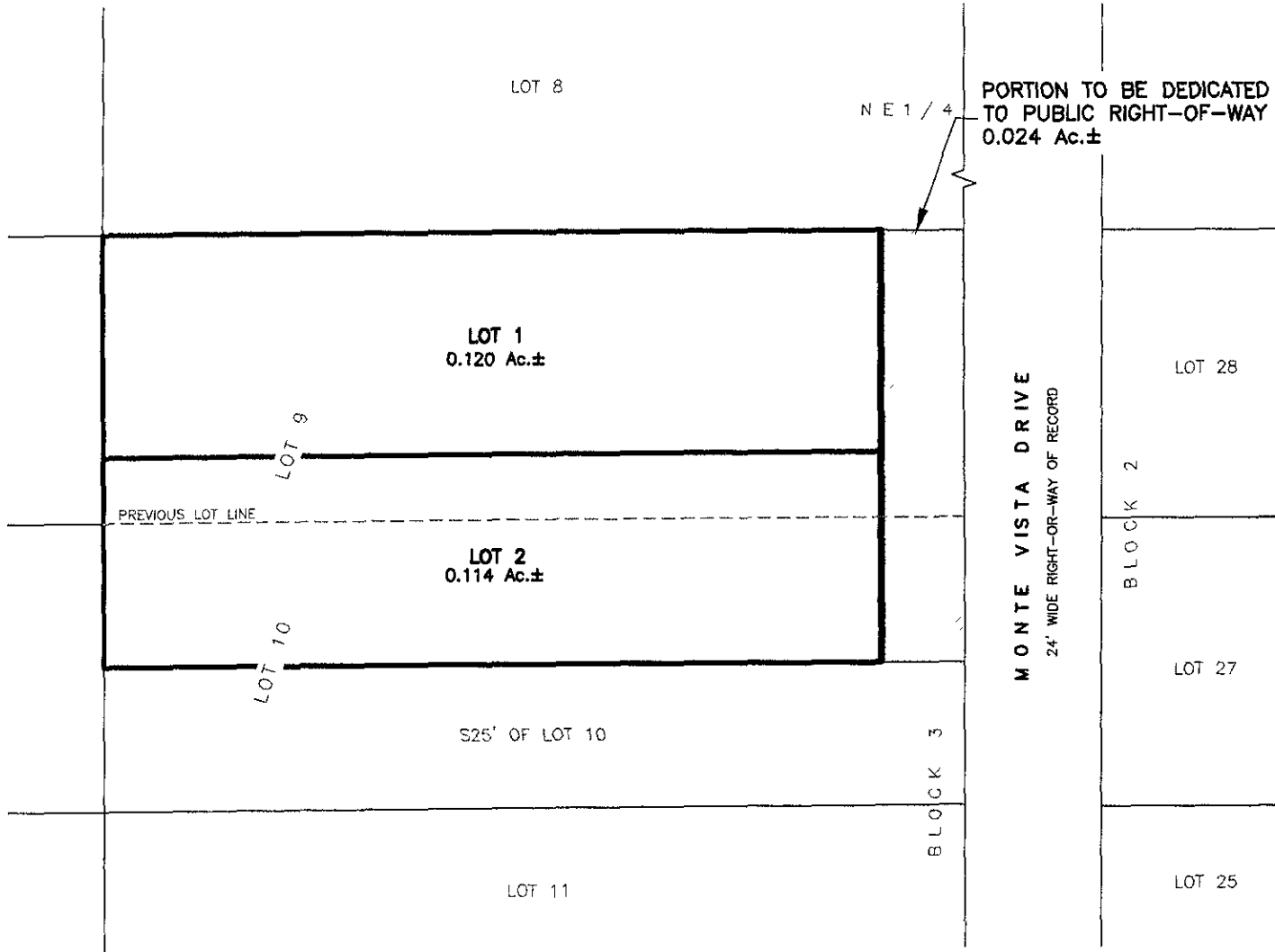


# LOTS 1 AND 2 OF MONTE VISTA SUBDIVISION,

(formerly Lot 9 and N25' of Lot 10 of Block 3 of Lot 3 of NE1/4 of the NW1/4 Section 9, T1N, R7E)

LOCATED IN THE NE1/4 OF THE NW1/4,  
SECTION 9, T1N, R7E, BHM  
RAPID CITY, PENNINGTON COUNTY, SOUTH DAKOTA



## RECEIVED

MAR 10 2010

Rapid City Growth  
Management Department

### Renner & Associates, LLC.

616 Sixth St. \* Rapid City, SD 57701 \* 605/721-7310  
FAX: 605/721-7313 \* E-MAIL: Gary@RennerAssoc.com  
\* Spearfish 605/717-0016 \*



CITY HALL 1903



N.T.S.