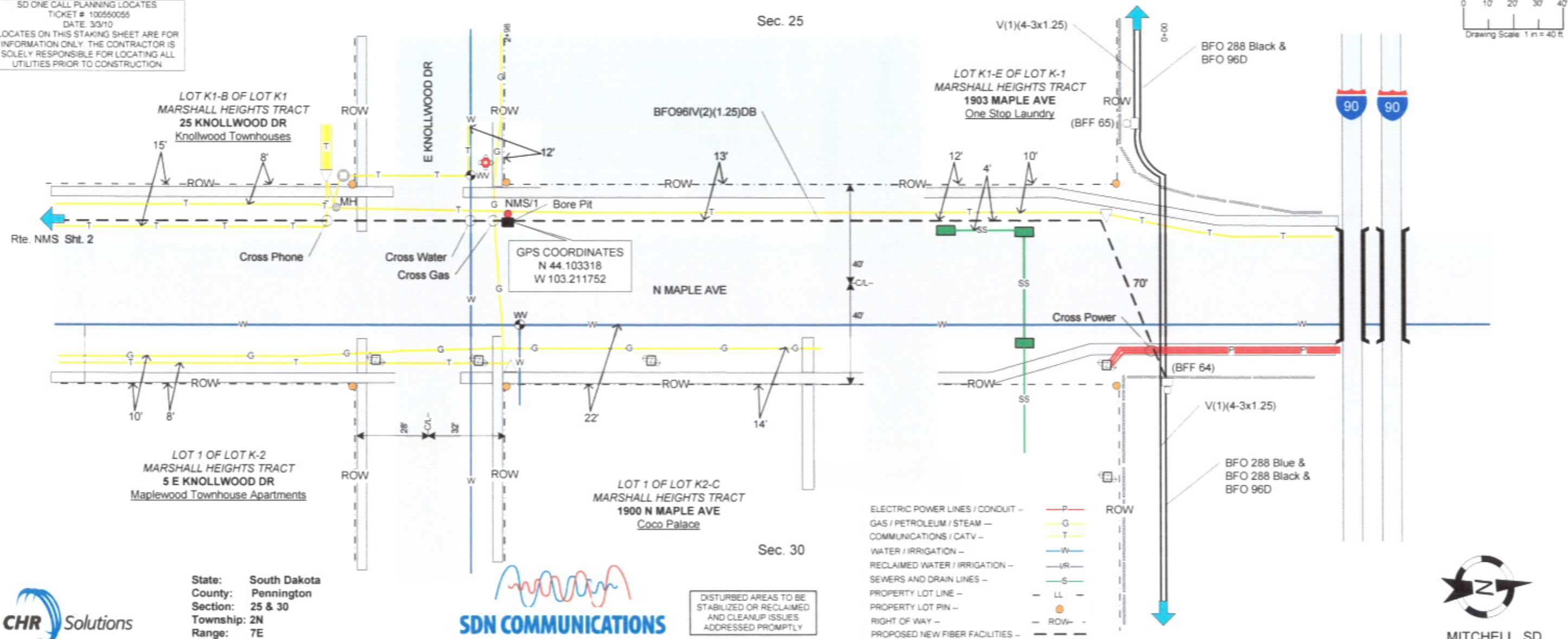
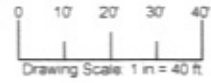


SD ONE CALL PLANNING LOCATES
 TICKET # 100650055
 DATE 3/3/10
 LOCATES ON THIS STAKING SHEET ARE FOR
 INFORMATION ONLY. THE CONTRACTOR IS
 SOLELY RESPONSIBLE FOR LOCATING ALL
 UTILITIES PRIOR TO CONSTRUCTION.



State: South Dakota
 County: Pennington
 Section: 25 & 30
 Township: 2N
 Range: 7E



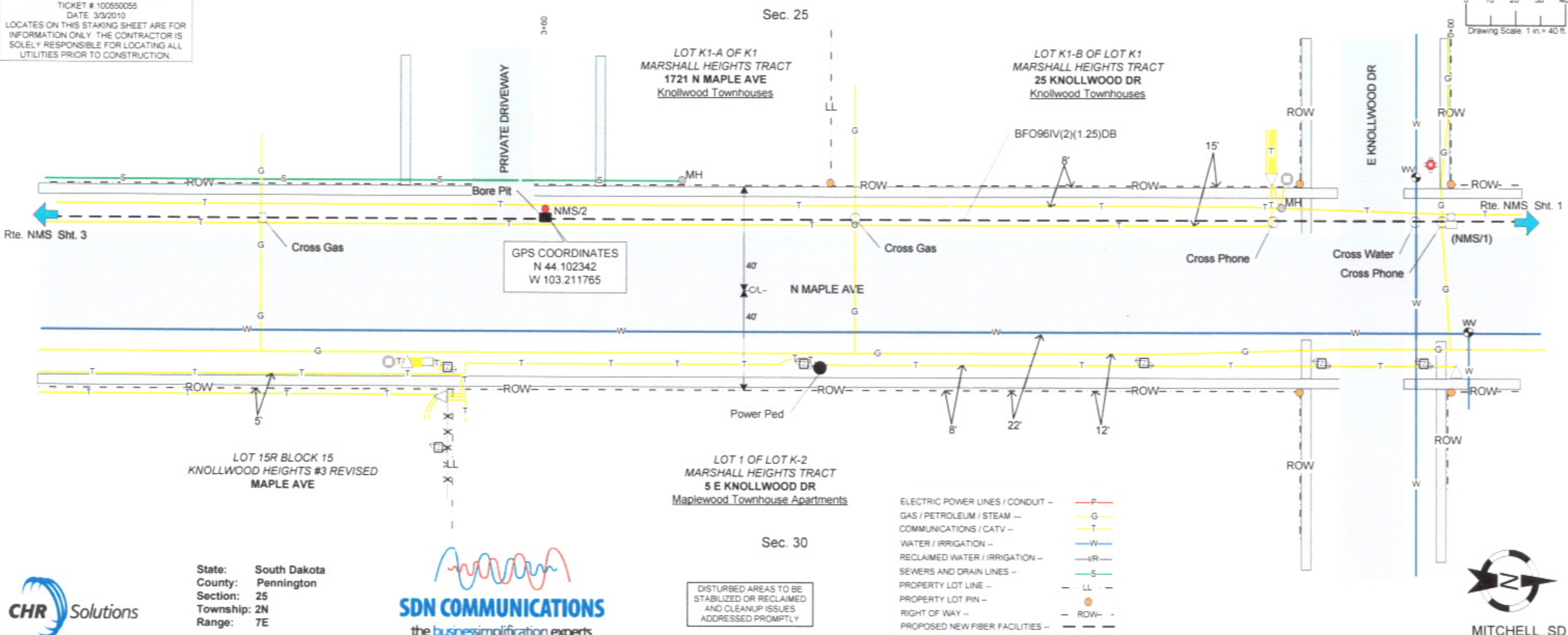
DISTURBED AREAS TO BE
 STABILIZED OR RECLAIMED
 AND CLEANUP ISSUES
 ADDRESSED PROMPTLY

- ELECTRIC POWER LINES / CONDUIT - P
- GAS / PETROLEUM / STEAM - G
- COMMUNICATIONS / CATV - T
- WATER / IRRIGATION - W
- RECLAIMED WATER / IRRIGATION - WR
- SEWERS AND DRAIN LINES - S
- PROPERTY LOT LINE - LL
- PROPERTY LOT PIN - ●
- RIGHT OF WAY - ROW
- PROPOSED NEW FIBER FACILITIES - - - -



From	To	Cable / Conduit Type, Size, Suffix	QTY	From Sequential	To Sequential	Reel Number	Misc Unit	QTY	Misc Unit	QTY	Remarks	As Staked Fiber Facilities		
BFF/64	BFF/64	BFO96	100				E(BHF(30x48x36)T)	(1)	HBFO(288)(96)	1	100' TAIL	WO:	200.91	
							WBHF	1				Exchange:	Rapid City	
												Route:	Stimulus - NMS	
BFF/64	NMS/1	BFO96IV(2)(1.25)DB	370				BHF(30x48x36)T	1	BM55A	1	200' COIL	ROW:	Public	
NMS/1	NMS/1	BFO96	200											
RECEIVED											Staked By	JPP	Date	Feb-10
MAR 11 2010											Plowed By		Date	
Rapid City Growth Management Department											As Built By		Date	
Management Department											Rev By		Date	
Management Department											Project	200.91		
Management Department											Site Facility	North Middle School		
Management Department											Route	NMS		
Management Department											Sheet	1	of	9

SD ONE CALL PLANNING LOCATES
 TICKET # 100550055
 DATE: 3/3/2010
 LOCATES ON THIS STAKING SHEET ARE FOR INFORMATION ONLY. THE CONTRACTOR IS SOLELY RESPONSIBLE FOR LOCATING ALL UTILITIES PRIOR TO CONSTRUCTION.



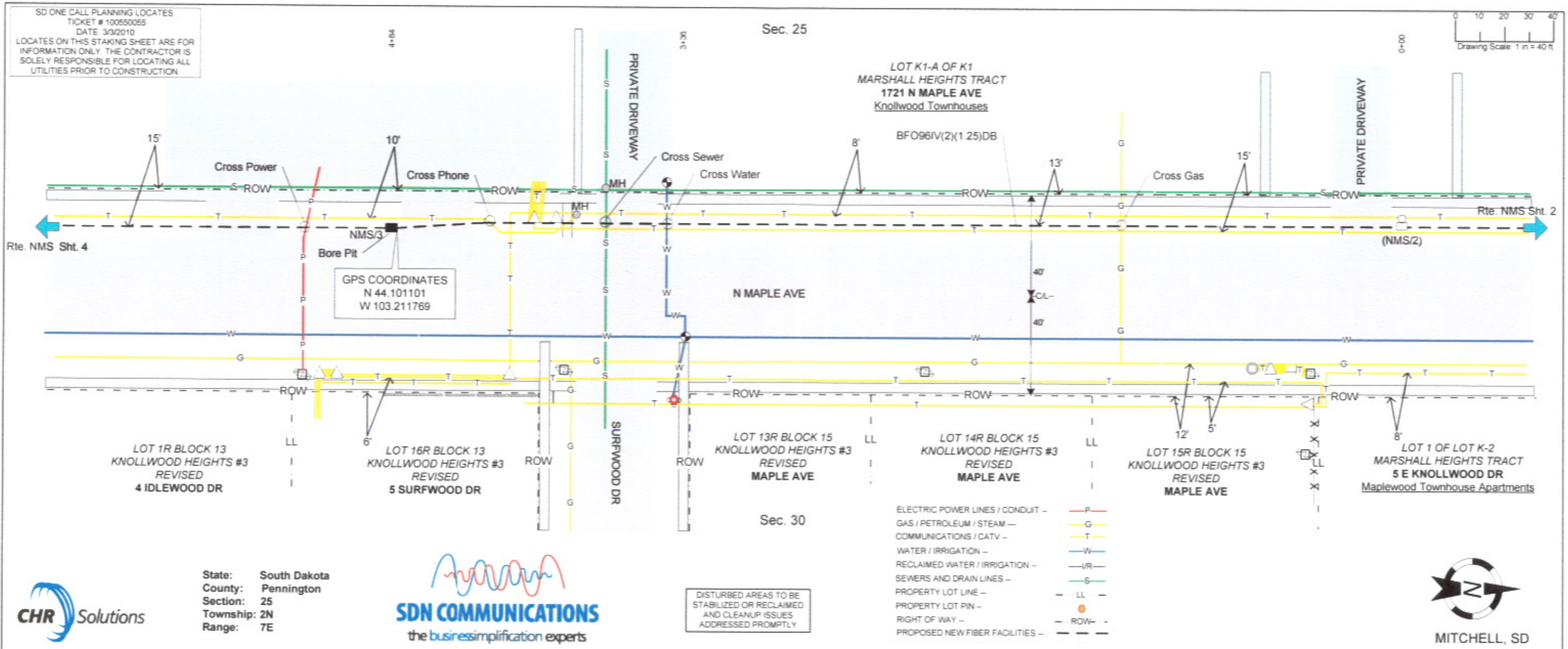
State: South Dakota
 County: Pennington
 Section: 25
 Township: 2N
 Range: 7E



DISTURBED AREAS TO BE STABILIZED OR RECLAIMED AND CLEANUP ISSUES ADDRESSED PROMPTLY

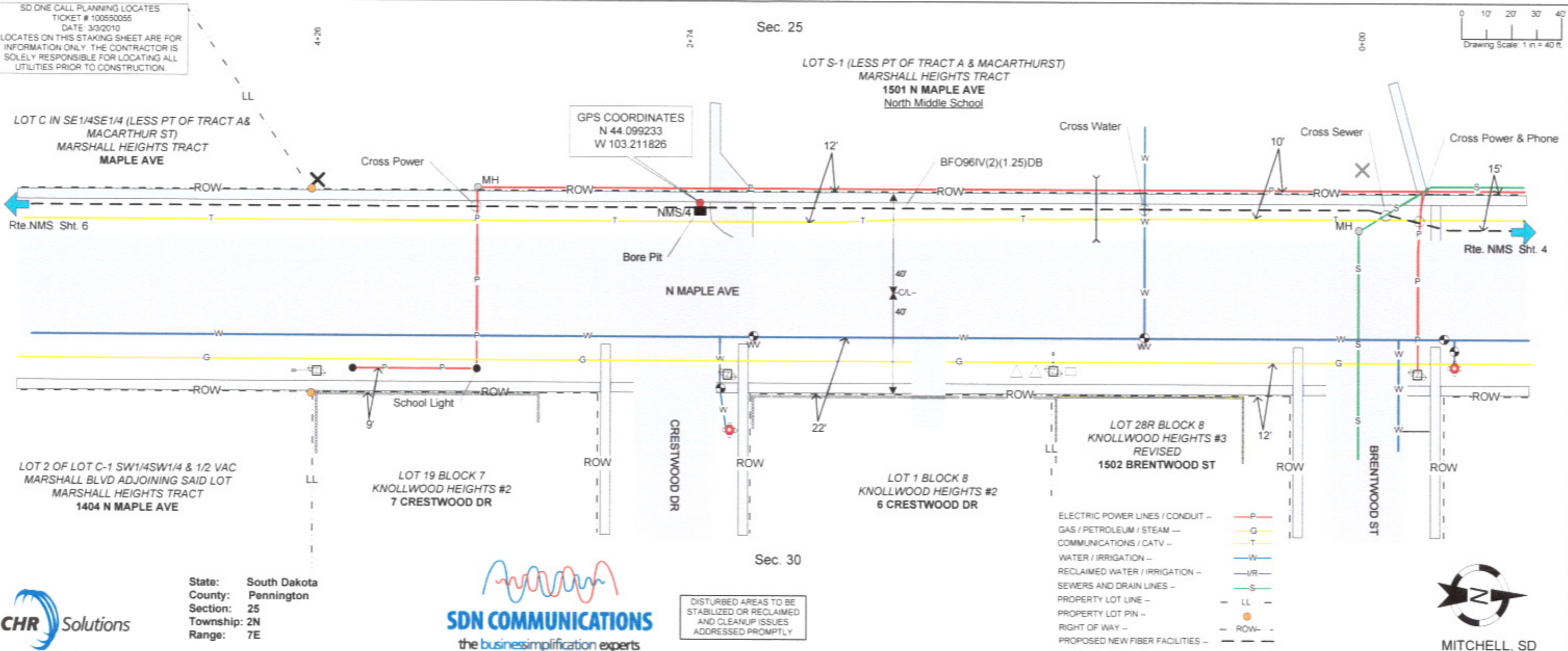


From	To	Cable / Conduit Type, Size, Suffix	QTY	From Sequential	To Sequential	Reel Number	Misc Unit	QTY	Misc Unit	QTY	Remarks	As Staked Fiber Facilities	
NMS/1	NMS/2	BFO96IV(2)(1.25)DB	360				BFH(30x48x36)T	1	BM55A			WO:	200.91
NMS/2	NMS/2	BFO96	200								200' COIL	Exchange:	Rapid City
												Route:	Stimulus - NMS
												ROW:	Public
												Staked By	JPP Date Mar-10
												Plowed By	Date
												As Built By	Date
												Rev By	Date
												Project	200.91
												Site Facility	North Middle School
												Route	NMS
												Sheet	2 of 9



From	To	Cable / Conduit Type, Size, Suffix	QTY	From Sequential	To Sequential	Reel Number	Misc Unit	QTY	Misc Unit	QTY	Remarks	As Staked Fiber Facilities	
NMS/2	NMS/3	BFO96IV(2)(1.25)DB	490				BHF(30x48x36)T	1				WO:	200.91
NMS/3	NMS/3	BFO96	200								200' COIL	Exchange:	Rapid City
												Route:	Stimulus - NMS
												ROW:	Public
												Staked By	JPP Date Mar-10
												Plowed By	Date
												As Built By	Date
												Rev By	Date
												Project	200.91
												Site Facility	North Middle School
												Route	NMS
												Sheet	3 of 9

SD ONE CALL PLANNING LOCATES
 TICKET # 100550055
 DATE 3/3/2010
 LOCATES ON THIS STAKING SHEET ARE FOR
 INFORMATION ONLY. THE CONTRACTOR IS
 SOLELY RESPONSIBLE FOR LOCATING ALL
 UTILITIES PRIOR TO CONSTRUCTION.



State: South Dakota
 County: Pennington
 Section: 25
 Township: 2N
 Range: 7E

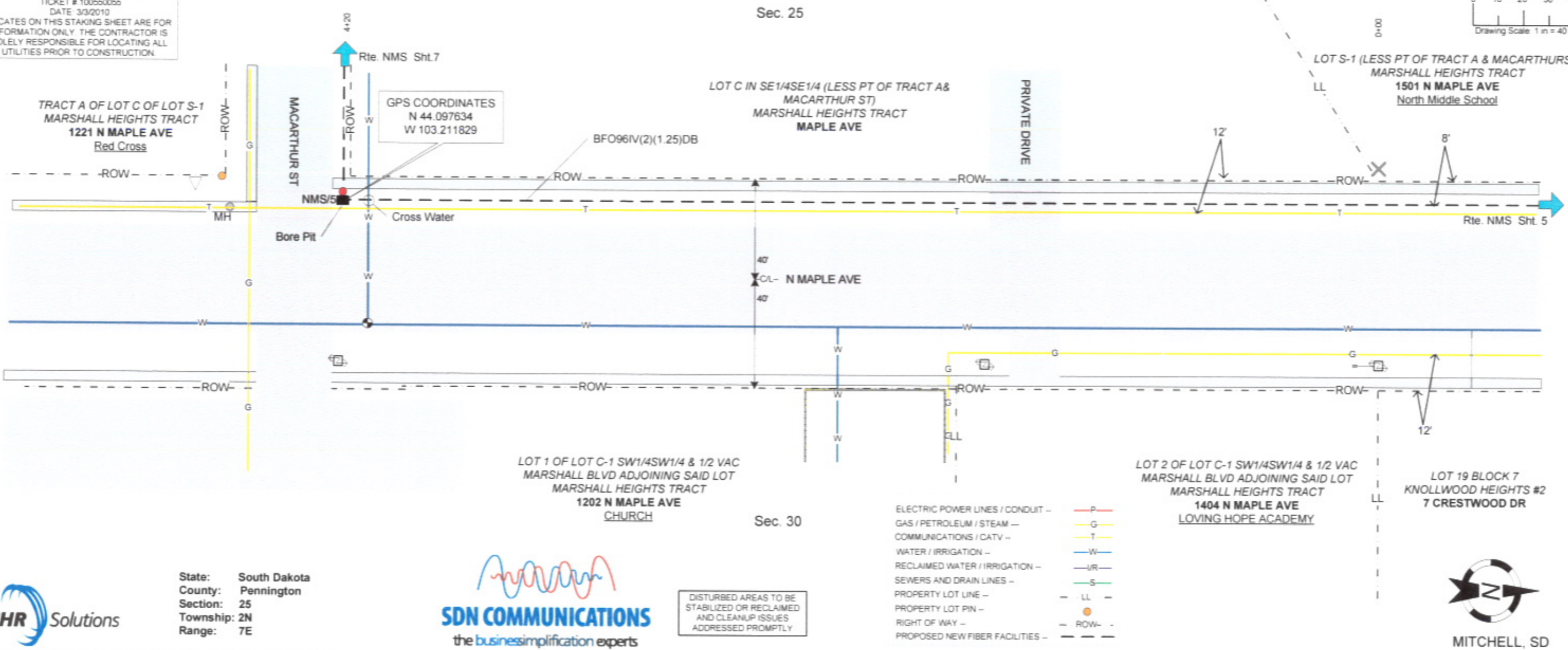
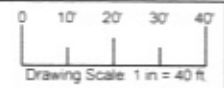


DISTURBED AREAS TO BE
 STABILIZED OR RECLAIMED
 AND CLEANUP ISSUES
 ADDRESSED PROMPTLY



From	To	Cable / Conduit Type, Size, Suffix	QTY	From Sequential	To Sequential	Reel Number	Misc Unit	QTY	Misc Unit	QTY	Remarks	As Staked Fiber Facilities	
X	NMS/4	BFO96IV(2)(1.25)DB	274				BHF(30x48x36)T	1	BM55A	1		WO:	200.91
NMS/4	NMS/4	BFO96	200								200' COIL	Exchange:	Rapid City
												Route:	Stimulus - NMS
NMS/4	X	BFO96IV(2)(1.25)DB	152									ROW:	Public
												Staked By	JPP Date Mar-10
												Plowed By	Date
												As Built By	Date
												Rev By	Date
												Project	200.91
												Site Facility	North Middle School
												Route	NMS
												Sheet	5 of 9

SD ONE CALL PLANNING LOCATES
 TICKET # 100550055
 DATE 3/3/2010
 LOCATES ON THIS STAKING SHEET ARE FOR
 INFORMATION ONLY. THE CONTRACTOR IS
 SOLELY RESPONSIBLE FOR LOCATING ALL
 UTILITIES PRIOR TO CONSTRUCTION.



State: South Dakota
 County: Pennington
 Section: 25
 Township: 2N
 Range: 7E

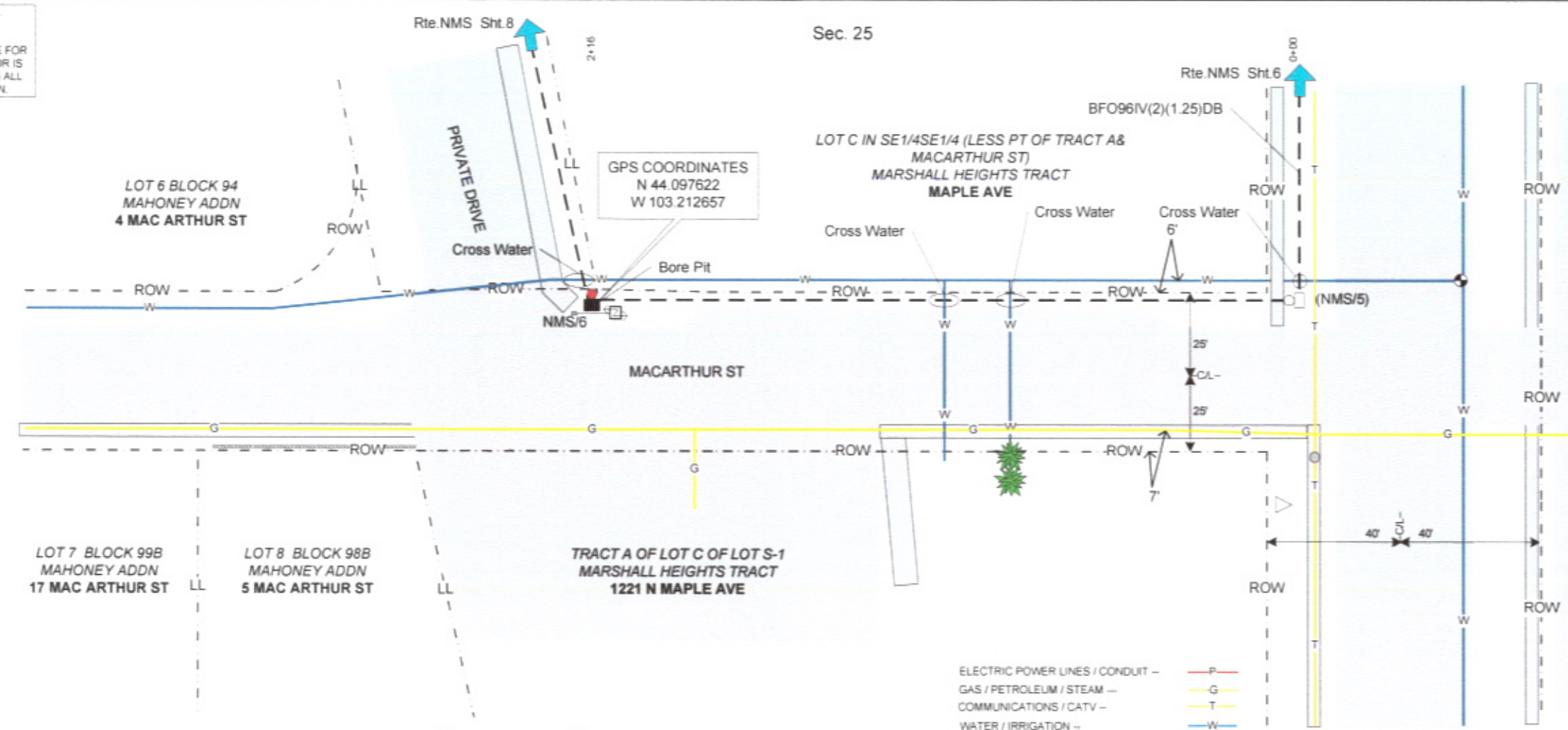
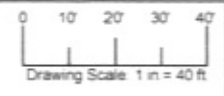


DISTURBED AREAS TO BE
 STABILIZED OR RECLAIMED
 AND CLEANUP ISSUES
 ADDRESSED PROMPTLY



From	To	Cable / Conduit Type, Size, Suffix	QTY	From Sequential	To Sequential	Reel Number	Misc Unit	QTY	Misc Unit	QTY	Remarks	As Staked Fiber Facilities	
X	NMS/5	BFO96IV(2)(1.25)DB	420				BHF(30x48x36)T	1	BM55A	1		WO:	200.91
NMS/5	NMS/5	BFO96	200								200' COIL	Exchange:	Rapid City
												Route:	Stimulus - NMS
												ROW:	Public
												Staked By	JPP Date Mar-10
												Plowed By	Date
												As Built By	Date
												Rev By	Date
												Project	200.91
												Site Facility	North Middle School
												Route	NMS
												Sheet	6 of 9

SD ONE CALL PLANNING LOCATES
 TICKET # 100550055
 DATE 3/3/2010
 LOCATES ON THIS STAKING SHEET ARE FOR
 INFORMATION ONLY. THE CONTRACTOR IS
 SOLELY RESPONSIBLE FOR LOCATING ALL
 UTILITIES PRIOR TO CONSTRUCTION.



State: South Dakota
 County: Pennington
 Section: 25
 Township: 2N
 Range: 7E



DISTURBED AREAS TO BE
 STABILIZED OR RECLAIMED
 AND CLEANUP ISSUES
 ADDRESSED PROMPTLY

- ELECTRIC POWER LINES / CONDUIT -- P
- GAS / PETROLEUM / STEAM -- G
- COMMUNICATIONS / CATV -- T
- WATER / IRRIGATION -- W
- RECLAIMED WATER / IRRIGATION -- WR
- SEWERS AND DRAIN LINES -- S
- PROPERTY LOT LINE -- LL
- PROPERTY LOT PIN -- ●
- RIGHT OF WAY -- ROW
- PROPOSED NEW FIBER FACILITIES -- - - -



From	To	Cable / Conduit Type, Size, Suffix	QTY	From Sequential	To Sequential	Reel Number	Misc Unit	QTY	Misc Unit	QTY	Remarks	As Staked Fiber Facilities	
NMS/5	NMS/6	BFO96IV(2)(1.25)DB	220				BHF(30x48x36)T	1	BM(5/8)(8)	1		WO:	200.91
NMS/6	NMS/6	BFO96	100				BM55A	1	HBFO(96)(12)	1	100' TAIL	Exchange:	Rapid City
	NMS/6	BFO12	100								100' TAIL	Route:	Stimulus - NMS
												ROW:	Public
												Staked By	JPP Date Mar-10
												Plowed By	Date
												As Built By	Date
												Rev By	Date
												Project	200.91
												Site Facility	North Middle School
												Route	NMS
												Sheet	7 of 9

