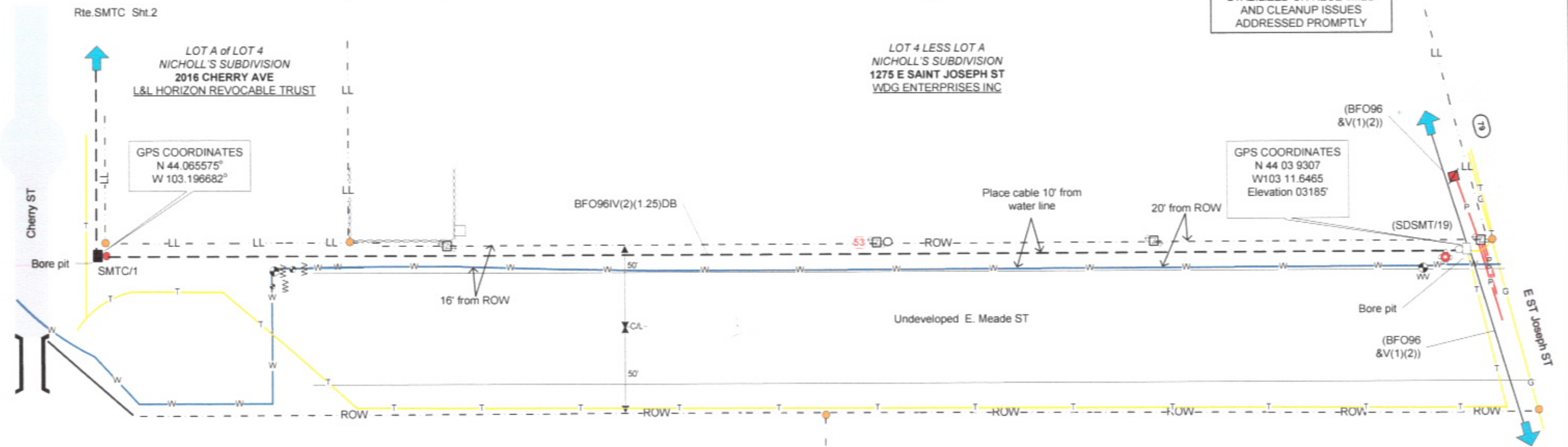


ALL DISTURBED AREAS TO BE STABILIZED OR RECLAIMED AND CLEANUP ISSUES ADDRESSED PROMPTLY



State: South Dakota
 County: Pennington
 Section: 7
 Township: 1N
 Range: 8E

SD ONE CALL PLANNING LOCATES
 TICKET # 100460035
 DATE: 15-Feb-10
 LOCATES ON THIS STAKING SHEET ARE FOR INFORMATION ONLY. THE CONTRACTOR IS SOLELY RESPONSIBLE FOR LOCATING ALL UTILITIES PRIOR TO CONSTRUCTION.

BAL of LOT 5
 NICHOLL'S SUBDIVISION
 2201 CHERRY AVE
 WARNER L. GHERE



- ELECTRIC POWER LINES / CONDUIT -- P
- GAS / PETROLEUM / STEAM -- G
- COMMUNICATIONS / CATV -- T
- WATER / IRRIGATION -- W
- RECLAIMED WATER / IRRIGATION -- UR
- SEWERS AND DRAIN LINES -- S
- PROPERTY LOT LINE -- LL
- PROPERTY LOT PIN -- ●
- RIGHT OF WAY -- ROW
- PROPOSED NEW FIBER FACILITIES -- - - -

LOT A of LOT 5
 NICHOLL'S SUBDIVISION
 1311 E SAINT JOSEPH ST
 LINVELD INC.

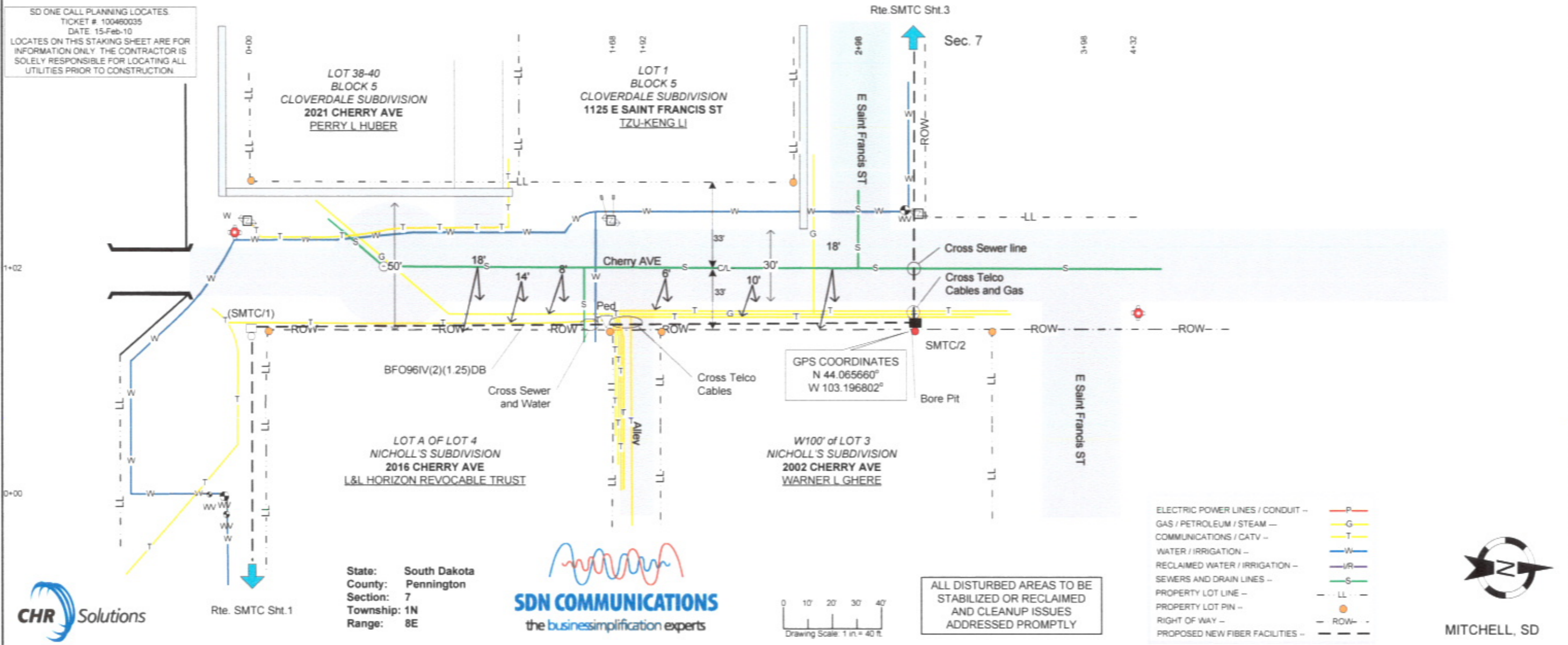


MITCHELL, SD



From	To	Cable / Conduit Type, Size, Suffix	QTY	From Sequential	To Sequential	Reel Number	Misc Unit	QTY	Misc Unit	QTY	Remarks	As Staked Fiber Facilities		
SDSMT/19	SDSMT/19	BFO96	100				E(BHF(30x48x36)T)	1	HBFO(96)(96)(96)	1	100' TAIL	WO:	200.83	
							WBHF	1				Exchange:	Rapid City	
(SDSMT/19)	SMTC/1	BFO96IV(2)(1.25)DB	670				BHF(30x48x36)T	1	BM55A	1		Route:	STIMULUS - SMTC	
SMTC/1	SMTC/1	BFO96	200				BM53	1			200' COIL	ROW:	Public	
RECEIVED											Staked By	BC	Date	2/24/10
MAR 11 2010											Plowed By		Date	
Rapid City Growth Management Department											As Built By		Date	
Rapid City Growth Management Department											Rev By		Date	
Rapid City Growth Management Department											Project	200.83		
Rapid City Growth Management Department											Site Facility	Dept. of HEALTH		
Rapid City Growth Management Department											Route	SMTC		
Rapid City Growth Management Department											Sheet	1	of	5

SD ONE CALL PLANNING LOCATES
 TICKET # 100460035
 DATE 15-Feb-10
 LOCATES ON THIS STAKING SHEET ARE FOR
 INFORMATION ONLY. THE CONTRACTOR IS
 SOLELY RESPONSIBLE FOR LOCATING ALL
 UTILITIES PRIOR TO CONSTRUCTION.



State: South Dakota
 County: Pennington
 Section: 7
 Township: 1N
 Range: 8E



ALL DISTURBED AREAS TO BE
 STABILIZED OR RECLAIMED
 AND CLEANUP ISSUES
 ADDRESSED PROMPTLY

- ELECTRIC POWER LINES / CONDUIT - P
- GAS / PETROLEUM / STEAM - G
- COMMUNICATIONS / CATV - T
- WATER / IRRIGATION - W
- RECLAIMED WATER / IRRIGATION - WR
- SEWERS AND DRAIN LINES - S
- PROPERTY LOT LINE - LL
- PROPERTY LOT PIN - ●
- RIGHT OF WAY - ROW
- PROPOSED NEW FIBER FACILITIES - - - -

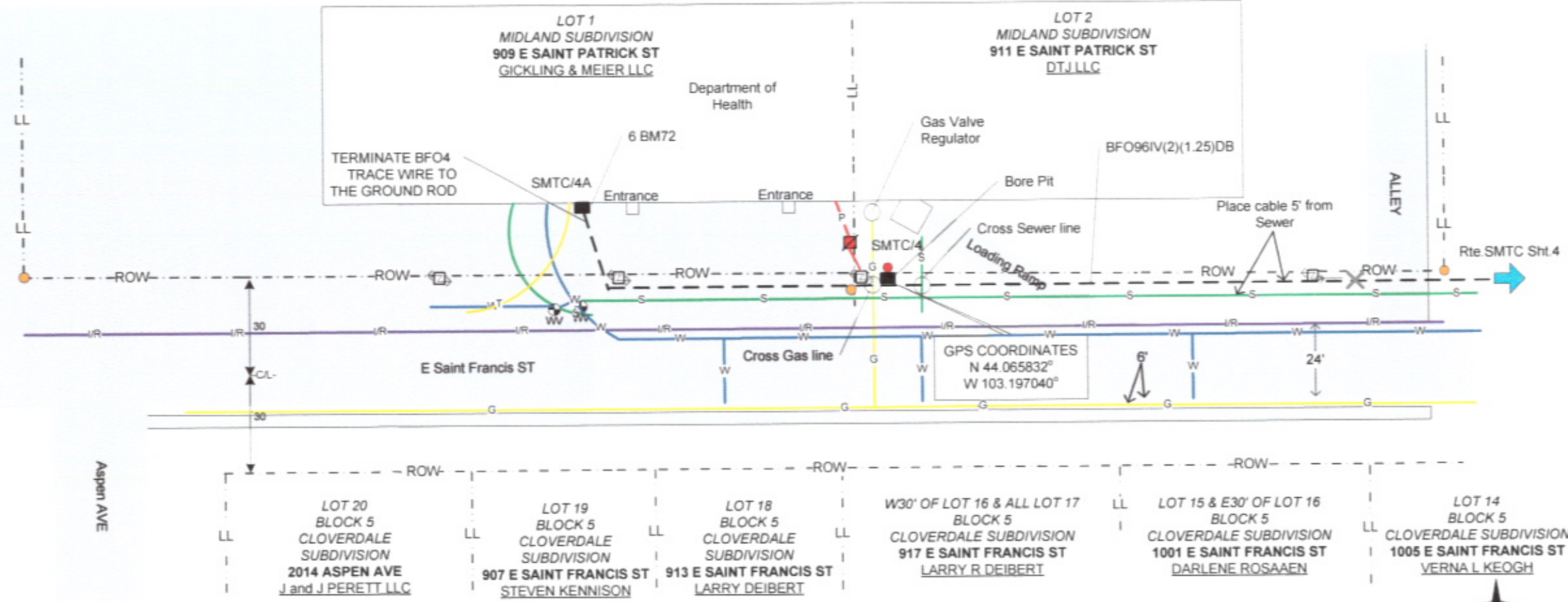


MITCHELL, SD

From	To	Cable / Conduit Type, Size, Suffix	QTY	From Sequential	To Sequential	Reel Number	Misc Unit	QTY	Misc Unit	QTY	Remarks	As Staked Fiber Facilities	
(SMTC/1)	SMTC/2	BFO96IV(2)(1.25)DB	284				BHF(30x48x36)T	1	BM2(5/8)(8)	1		WO:	200.83
SMTC/2	SMTC/2	BFO96	200				BM55A	1			200' COIL	Exchange:	Rapid City
												Route:	STIMULUS - SMTC
												ROW:	Public
												Staked By	BC Date 2/24/10
												Plowed By	Date
												As Built By	Date
												Rev By	Date
												Project	200.83
												Site Facility	DEPT. of HEALTH
												Route	SMTC
												Sheet	2 of 5

0+00 0+38 1+04 2+10 3+72 4+24

SD ONE CALL PLANNING LOCATES
 TICKET # 100470022
 DATE 18-Feb-10
 LOCATES ON THIS STAKING SHEET ARE FOR
 INFORMATION ONLY. THE CONTRACTOR IS
 SOLELY RESPONSIBLE FOR LOCATING ALL
 UTILITIES PRIOR TO CONSTRUCTION.



- ELECTRIC POWER LINES / CONDUIT -- P
- GAS / PETROLEUM / STEAM -- G
- COMMUNICATIONS / CATV -- T
- WATER / IRRIGATION -- W
- RECLAIMED WATER / IRRIGATION -- IR
- SEWERS AND DRAIN LINES -- S
- PROPERTY LOT LINE -- LL
- PROPERTY LOT PIN -- ●
- RIGHT OF WAY -- ROW
- PROPOSED NEW FIBER FACILITIES -- - - -

State: South Dakota
 County: Pennington
 Section: 7
 Township: 1N
 Range: 08E



ALL DISTURBED AREAS
 TO BE STABILIZED OR
 RECLAIMED IN A TIMELY
 MANNER



From	To	Cable / Conduit Type, Size, Suffix	QTY	From Sequential	To Sequential	Reel Number	Misc Unit	QTY	Misc Unit	QTY	Remarks
X	SMTC/4	BFO96IV(2)(1.25)DB	158				BHF(30x48x36)T	1	BM2(5/8)(8)	1	
SMTC/4	SMTC/4	BFO96	100				BM55A	1	HBFO(96)(4)	1	100' Tail
SMTC/4	SMTC/4	BFO4	100								100' Tail
SMTC/4	SMTC/4A	BFO4IV(1.25)DB	144				BHF(12x24x18)T	1	BM2(3/8)(4)	1	12 Fiber Dielectric
							BM72	6			W/Trace wire Terminated
SMTC/4A	Data Room	SEOD4	100				BM21	1			Dept. of Health Data Room
											4 Fiber Dielectric

As Staked Fiber Facilities		
WO:	200.83	
Exchange:	Rapid City	
Route:	STIMULUS - SMTC	
ROW:	Public	
Staked By	BC	Date 2/28/10
Plowed By		Date
As Built By		Date
Rev By		Date
Project	200.83	
Site Facility	DEPT of HEALTH	
Route	SMTC	
Sheet	5	of 5

