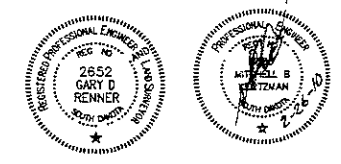
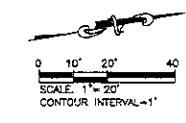


Prepared by

RENNER & ASSOCIATES, LLC.
 616 BIRCH ST. RAPID CITY, SD 57701
 PHONE: 605/731 7310 FAX: 605/731 7313
 BREWER: 605/731-0016
 CITY HALL 1908

NEUMANN MONSON WICTOR
ARCHITECTS
 701 DOUGLAS STREET SIOUX CITY, IOWA 51101
 712.255.3610 712.252.0484 FAX
 EMAIL: nmw@nmwarchitects.com

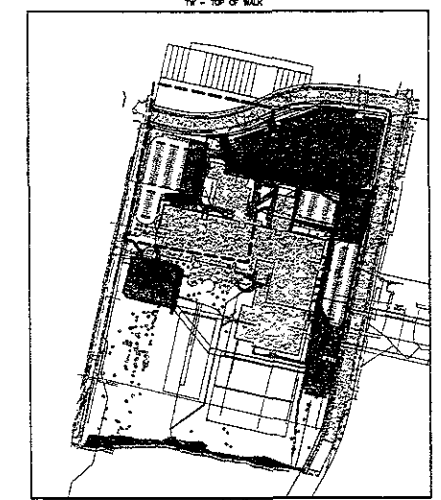


UTILITIES
 SOUTH DAKOTA ONE CALL NOTIFICATION CENTER
 113 EVERGREEN HEIGHTS DRIVE
 PITTSBURGH, PA 15229
 1-800-781-7474

The locations of existing underground utilities are shown in an approximate way only and have not been independently verified by the owners or its representative. The contractor shall determine the exact location of all existing utilities before commencing work, and agree to be fully responsible for any and all damages which might be occasioned by the contractor's failure to exactly locate and preserve any and all underground utilities.

- LEGEND**
- △ CONTROL POINT
 - MARSHLE
 - FIRE HYDRANT
 - WATER VALVE
 - CURB STOP
 - ROOF DRAIN
 - POWER POLE
 - LIGHT POLE
 - BUS
 - SEWER
 - FIRE SIGN
 - MINOR CONTOUR (1')
 - MAJOR CONTOUR (5')
 - PROPERTY LINE
 - CHAIN LINK FENCE
 - CURB & GUTTER
 - WATER LINE
 - POWER LINE
 - OVER HEAD POWER
 - TELEPHONE LINE
 - SANITARY SEWER LINE
 - STORM SEWER LINE
 - GAS LINE
 - CABLE LINE
 - FIBER LINE
 - ASPHALT SURFACE
 - CONCRETE SURFACE
 - GRAVEL
 - LANDSCAPING
 - DENOTES FOUND SURVEY MONUMENT
 - DENOTES SET 5/8" REBAR MARKED "RENNER-ASSOC. 2017"
 - (M) MEASURED THIS SURVEY
 - TC = TOP OF CURB
 - TA = TOP OF ASPHALT
 - TW = TOP OF WALK
 - DRAINAGE FLOW
 - DESIGN CONTOUR

CONCRETE CURB AND GUTTER:
 DRAINAGE ARROWS INDICATE THE FUNCTION OF THE CURB, ARROWS PERPENDICULAR OR DIAGONAL TO THE CURB INDICATE TYPE B1 (SPILL) CURB; DRAINAGE ARROWS RUNNING PARALLEL TO THE CURB INDICATE TYPE B (CATCH) CURB. CONTRACTOR SHALL TRANSITION BETWEEN TYPE B1 AND TYPE B CURB AT THE APPROPRIATE LOCATIONS TO PROVIDE THE INDICATED FLOW SCENARIO WITHOUT CREATING SPOTS IN THE CURB THAT DO NOT DRAIN DEVI.



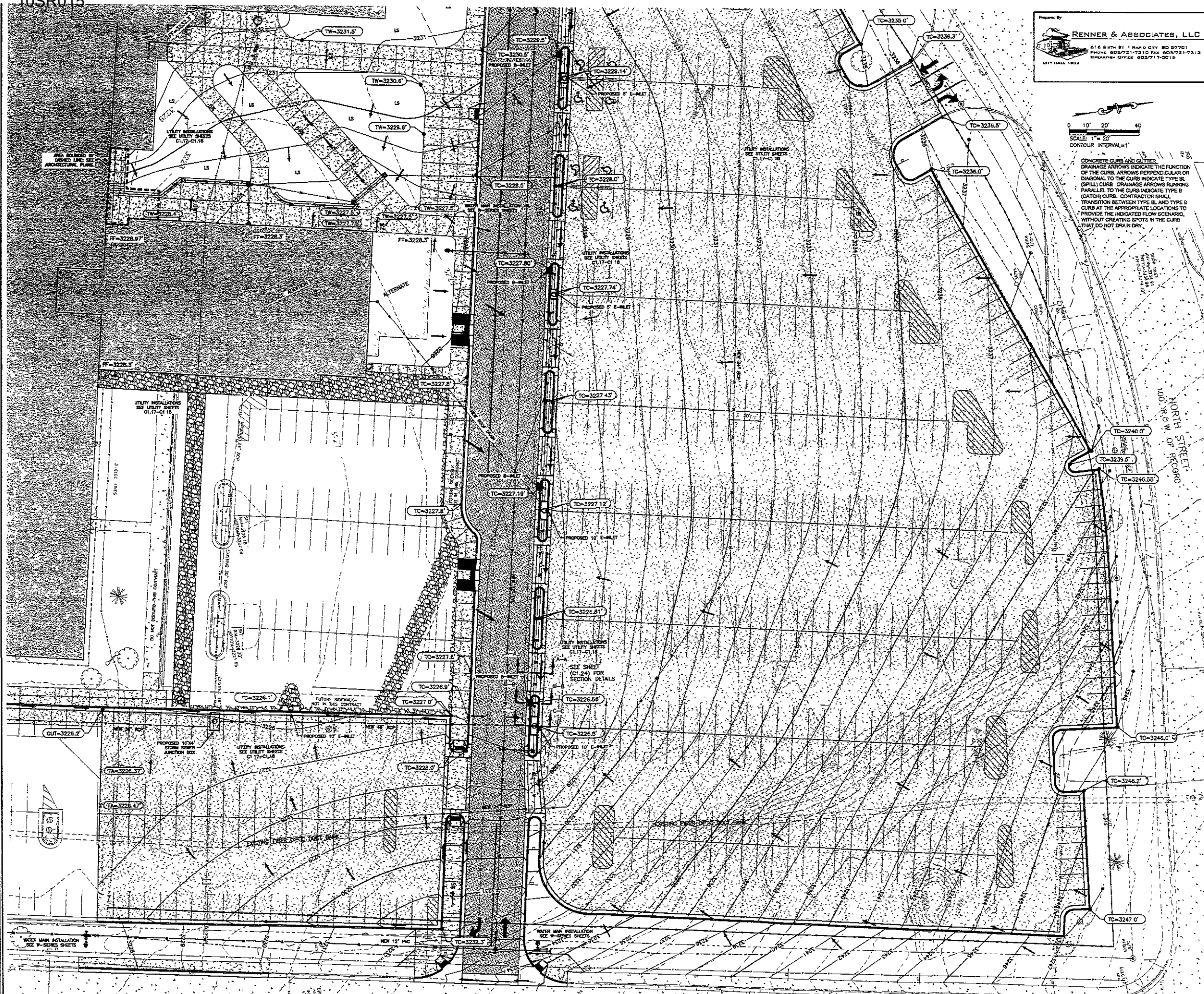
CENTRAL HIGH SCHOOL
RENOVATIONS AND ADDITIONS
 RAPID CITY AREA SCHOOL DISTRICT #51-4
 RAPID CITY, SOUTH DAKOTA

GRADING
WEST STUDENT PARKING LOT
NINTH GRADE ADDITION

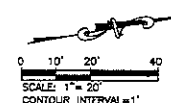
PROJECT NO: 0814 DRAWING NO:
 CIVIL #24116
 DRAFTER: PVM
 DATE: 2/26/2010

C1.10

If this drawing is not 30" x 42" it is a reduced print



Prepared By:
RENNER & ASSOCIATES, LLC
 816 SOUTH BY - RAPID CITY, SD 57701
 PHONE 605/721-7310 FAX 605/721-7313
 REPAIRS: OFFICE 605/717-0016
 CITY HALL 1928



CONCRETE CURBS AND GUTTER DRAINAGE ARROWS INDICATE THE FUNCTION OF THE CURBS. ARROWS PERPENDICULAR OR DIAGONAL TO THE CURBS INDICATE TYPE B (SPILL) CURBS. DRAINAGE ARROWS RUNNING PARALLEL TO THE CURBS INDICATE TYPE B (CATCH) CURBS. CONTRACTOR SHALL TRANSITION BETWEEN TYPE B1 AND TYPE B CURBS AT THE APPROPRIATE LOCATIONS TO PROVIDE THE INDICATED FLOW SCENARIO, WITHOUT CREATING SPOTS IN THE CURBS THAT DO NOT DRAIN DRY.

NEUMANN MONSON WICTOR ARCHITECTS
 701 DOUGLAS STREET SIOUX CITY, IOWA 51101
 712.255.3610 712.252.0484 FAX
 EMAIL: nmw@nmwarchitects.com



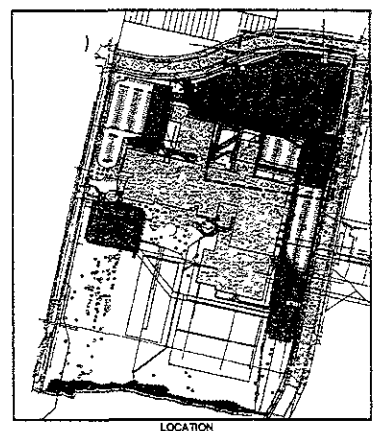
UTILITIES
 SOUTH DAKOTA THE CALL NOTIFICATION CENTER
 115 EVERGREEN HEIGHTS DRIVE
 PITTSBURGH, PA 15229
 1-800-781-1174

The locations of existing underground utilities are shown in an approximate way only and have not been independently verified by the engineer or his representative. The contractor shall determine the exact location of all existing utilities before commencing work, and agree to be fully responsible for any and all damages which might be occasioned by the contractor's failure to locate and preserve any and all underground utilities.

LEGEND

△	CONTROL POINT
○	MANHOLE
□	FIRE HYDRANT
⊕	WATER VALVE
⊙	CURB STOP
⊕	ROOF DRAIN
⊕	POWER POLE
⊕	LIGHT POLE
⊕	BUSH
⊕	TRIE
⊕	STUMP
⊕	PINE
⊕	SOIL
---	MANOP CONTOUR (1')
---	MAJOR CONTOUR (5')
---	PROPERTY LINE
---	CHAIN LINK FENCE
---	CURB & GUTTER
---	WATER LINE
---	POWER LINE
---	OVER HEAD POWER
---	TELEPHONE LINE
---	SANITARY SEWER LINE
---	STORM SEWER LINE
---	GAS LINE
---	CABLE LINE
---	FIBER LINE
---	ASPHALT SURFACE
---	CONCRETE SURFACE
---	GRAVEL
---	LANDSCAPING

● DENOTES FOUND SURVEY MONUMENT
 ⊕ DENOTES SET 5/8" REBAR MARKED "RENNER-ASSOC. #215"
 (N) MEASURED THIS SURVEY
 TC = TOP OF CURB
 TA = TOP OF ASPHALT
 TW = TOP OF WALK
 → DRAINAGE FLOW
 --- DRAINAGE CONTOUR
 TC = TOP OF CURB
 TA = TOP OF ASPHALT
 TW = TOP OF WALK



CENTRAL HIGH SCHOOL RENOVATIONS AND ADDITIONS
 RAPID CITY AREA SCHOOL DISTRICT #51-4
 RAPID CITY, SOUTH DAKOTA

GRADING NORTH GRADING LOT AND COURTYARD

PROJECT NO 0814 DRAWING NO CIVIL #2416
 DRAFTER FMM DATE 2/28/2010

C1.11

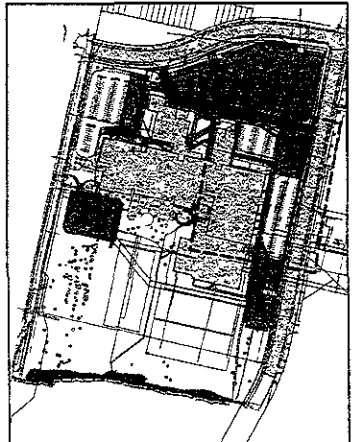
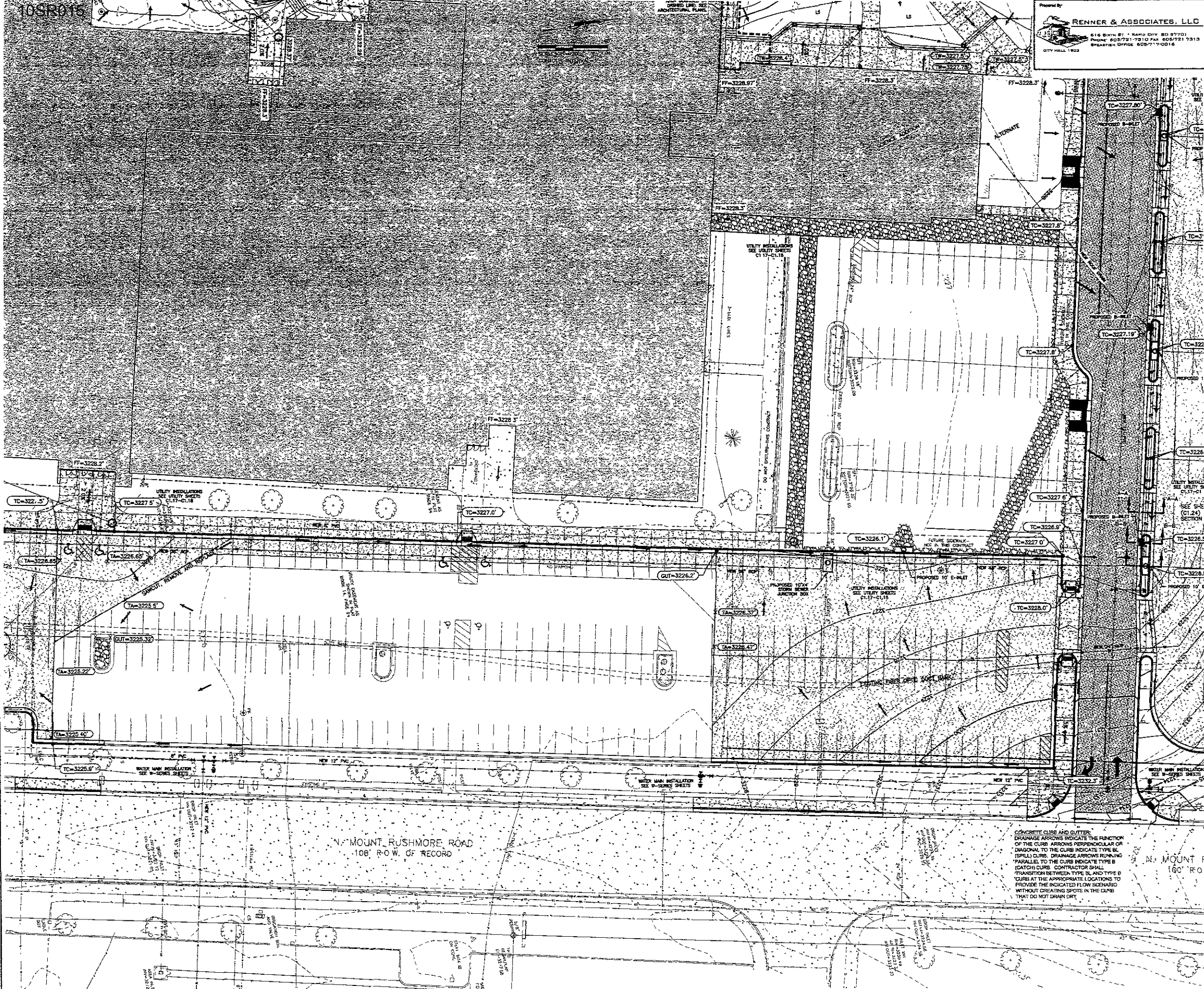
If this drawing is not 30" x 42" it is a reduced print



UTILITIES
 SOUTH DAKOTA ONE CALL NOTIFICATION CENTER
 115 CYCLOPS HEIGHTS DRIVE
 PITTSBURGH, PA 15229
 1-800-791-7474

The locations of existing underground utilities are shown in an approximate way only and have not been independently verified by the owners or its representatives. The contractor shall determine the exact location of existing utilities before commencing work and agree to be fully responsible for any and all damages which might be occasioned by the contractor's failure to exactly locate and preserve any and all underground utilities.

- LEGEND**
- △ CONTROL POINT
 - MANHOLE
 - FIRE HYDRANT
 - WATER VALVE
 - CURB STOP
 - ROOF DRAIN
 - POWER POLE
 - LIGHT POLE
 - BUSH
 - TREE
 - STUMP
 - PNC
 - SIGN
 - MINOR CONTOUR (1')
 - MAJOR CONTOUR (5')
 - PROPERTY LINE
 - CHAIN LINK FENCE
 - CURB & GUTTER
 - WATER LINE
 - POWER LINE
 - OVER HEAD POWER
 - TELEPHONE LINE
 - SANITARY SEWER LINE
 - STORM SEWER LINE
 - GAS LINE
 - CABLE LINE
 - FIBER LINE
 - ASPHALT SURFACE
 - CONCRETE SURFACE
 - GRAVEL
 - LANDSCAPING
 - DENOTES FOUND SURVEY MONUMENT
 - DENOTES SET 5/8" IRON MARKED "RENNER-ASSOC. 0217"
 - (M) MARKED THIS SURVEY
 - TC = TOP OF CURB
 - TA = TOP OF ASPHALT
 - TT = TOP OF WALK
 - DRAINAGE FLOW
 - DESIGN CONTOUR



CONCRETE CURB AND GUTTER
 DRAINAGE ARROWS INDICATE THE FUNCTION OF THE CURB. ARROWS PERPENDICULAR OR DIAGONAL TO THE CURB INDICATE TYPE BL (SPILL) CURB. DRAINAGE ARROWS RUNNING PARALLEL TO THE CURB INDICATE TYPE B (CATCH) CURB. CONTRACTOR SHALL TRANSITION BETWEEN TYPE BL AND TYPE B CURBS AT THE APPROPRIATE LOCATIONS TO PROVIDE THE INDICATED FLOW SCENARIO WITHOUT CREATING SPOTS IN THE CURBS THAT DO NOT DRAIN DRY.

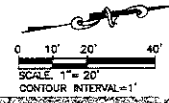
CENTRAL HIGH SCHOOL
RENOVATIONS AND ADDITIONS

RAPID CITY AREA SCHOOL DISTRICT #51-4
 RAPID CITY, SOUTH DAKOTA

GRADING
EAST PARKING LOT

PROJECT NO 0814 DRAWING NO
 CIVIL #2416
 DRAFTER PBM/ DATE 2/26/2010 **C1.12**

If this drawing is not 30" x 42" it is a reduced print.



Prepared by
RENNER & ASSOCIATES, L.L.C.
 815 BIRTH ST. • RAPID CITY, SD 57701
 PHONE: 605/721-7310 FAX: 605/721-7313
 BREAKFAST OFFICE: 605/717-0016
 CITY HALL 1903

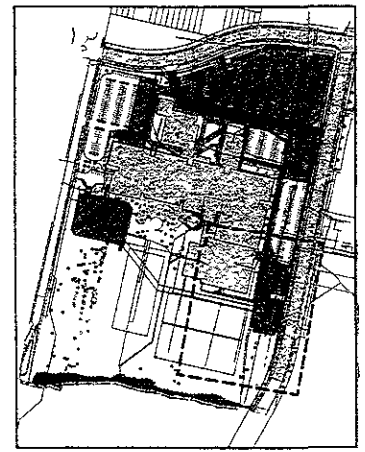
NEUMANN MONSON WICTOR
ARCHITECTS
 701 DOUGLAS STREET SIOUX CITY, IOWA 51101
 712.255.3610 712.252.0484 FAX
 EMAIL: nmw@nmwarchitects.com



UTILITIES
 SOUTH DAKOTA ONE CALL NOTIFICATION CENTER
 115 EVERSHED HEIGHTS DRIVE
 PITTSBURGH, PA 15226
 1-800-781-7474
 The locations of existing underground utilities are shown in an approximate way only and have not been independently verified by the engineer or architect. The contractor shall determine the exact location of all existing utilities before commencing work, and agree to be fully responsible for any and all damages which might be occasioned by the contractor's failure to exactly locate and preserve any and all underground utilities.

LEGEND

- △ CONTROL POINT
- MANHOLE
- FIRE HYDRANT
- ⊕ WATER VALVE
- ⊕ CURB STOP
- ⊕ ROOF DRAIN
- ⊕ POWER POLE
- ⊕ LIGHT POLE
- ⊕ BUSH
- ⊕ TREE
- ⊕ STUMP
- ⊕ FENCE
- ⊕ SIGN
- MINOR CONTOUR (1')
- MAJOR CONTOUR (5')
- PROPERTY LINE
- CHAIN LINK FENCE
- CURB & GUTTER
- WATER LINE
- POWER LINE
- OVER HEAD POWER
- TELEPHONE LINE
- SANITARY SEWER LINE
- STORM SEWER LINE
- GAS LINE
- CABLE LINE
- FIBER LINE
- ASPHALT SURFACE
- CONCRETE SURFACE
- GRAVEL
- LANDSCAPING
- DENOTES FOUND SURVEY MONUMENT
- ⊙ DENOTES SET 3/4" IRON MARKED TRIPPER-ASSOC 9227
- (M) MEASURED THIS SURVEY
- TC = TOP OF CURB
- TL = TOP OF ASPHALT
- TL = TOP OF WALK
- DRAINAGE FLOW
- DESIGN CONTOUR



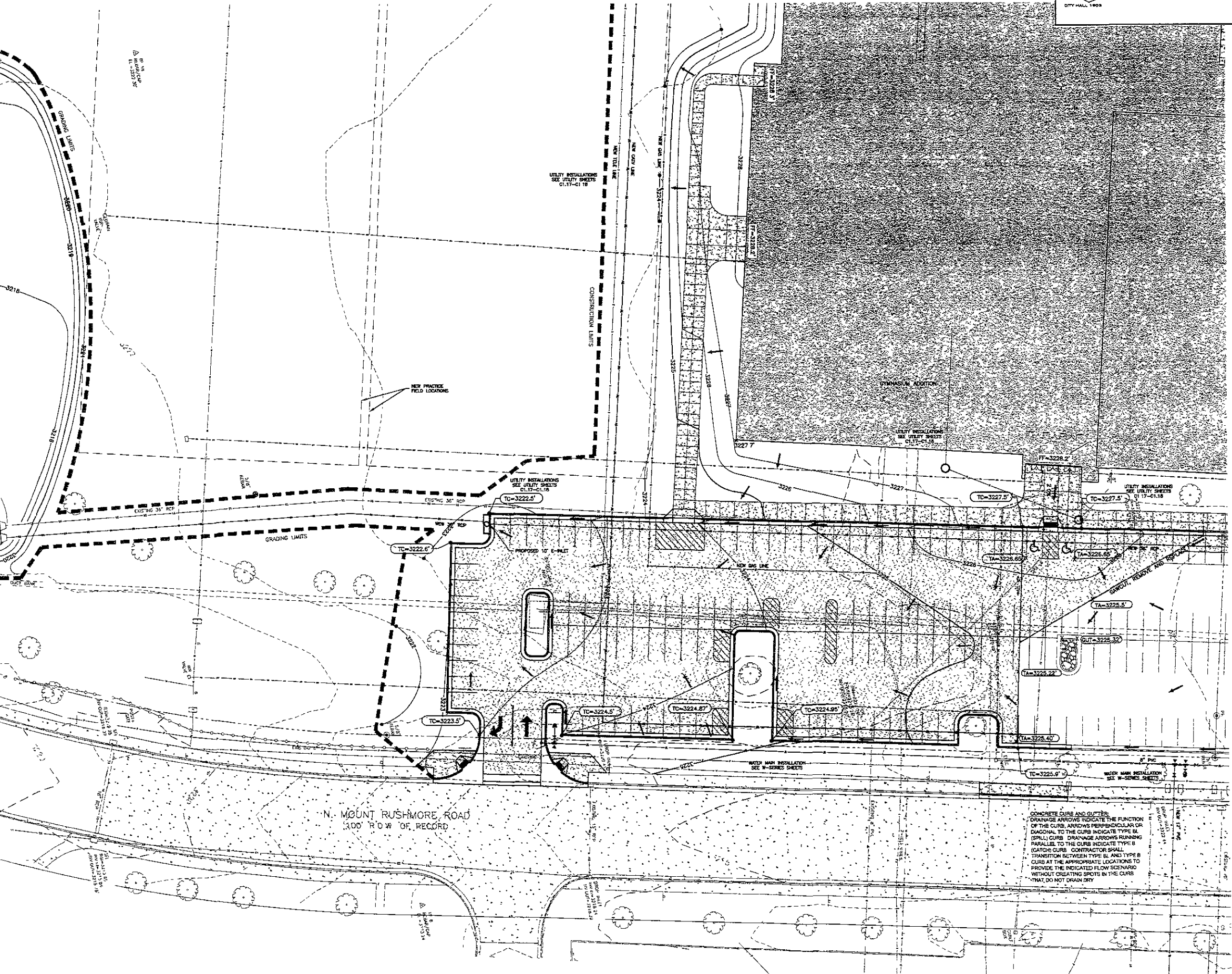
CENTRAL HIGH SCHOOL
 RENOVATIONS AND ADDITIONS
 RAPID CITY AREA SCHOOL DISTRICT #51-4
 RAPID CITY, SOUTH DAKOTA

GRADING
 SOUTH EAST PARKING LOT

PROJECT NO 0814 DRAWING NO
 CIVIL #2416
 DRAFTER PMM
 DATE 2/26/2010

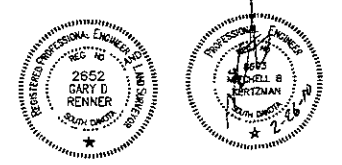
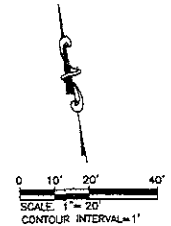
C1.13

If this drawing is not 30" x 42" it is a reduced print.



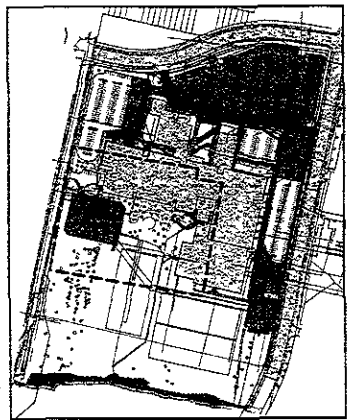
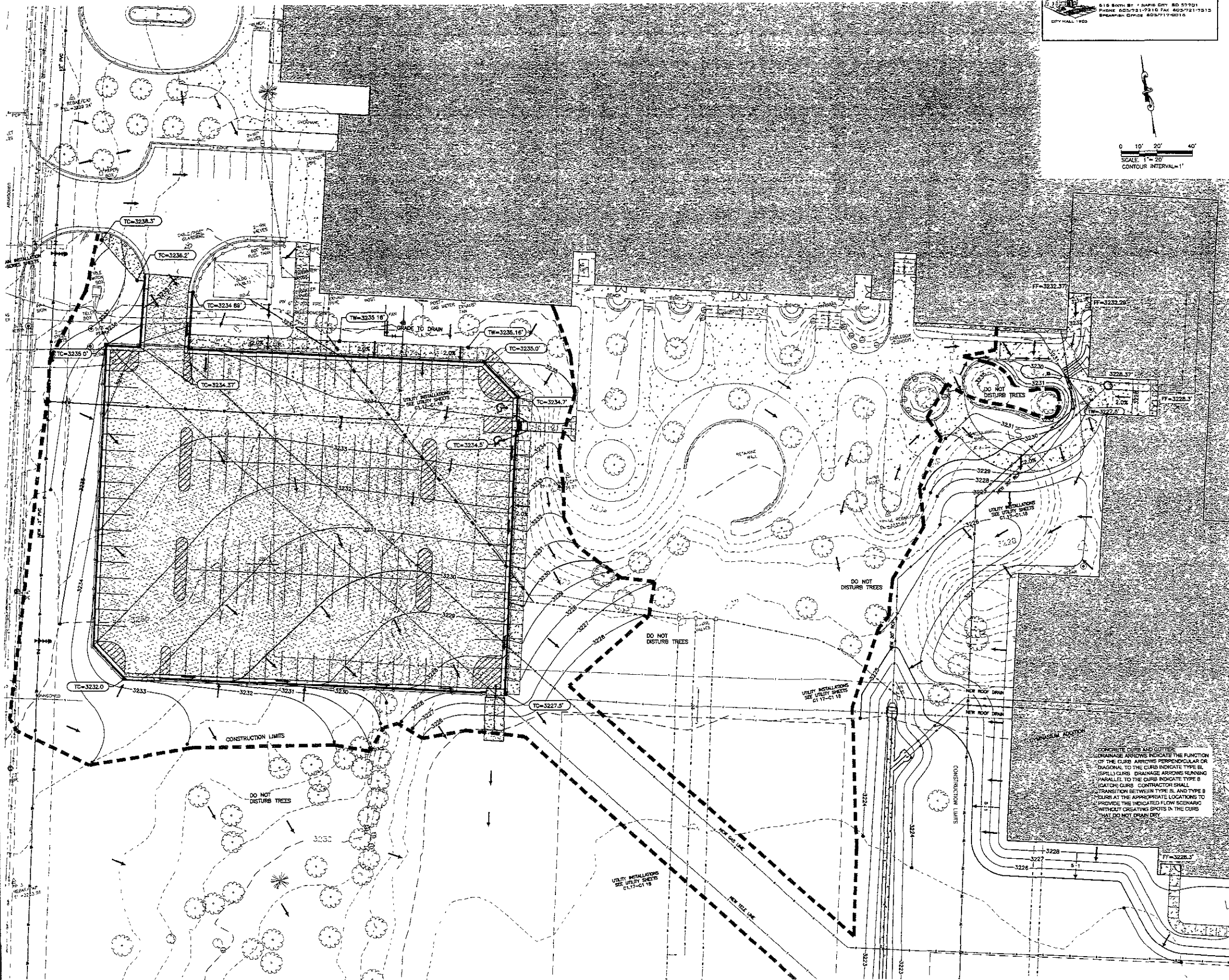
CONCRETE CURB AND GUTTERS
 DRAINAGE ARROWS INDICATE THE FUNCTION OF THE CURB. ARROWS PERPENDICULAR OR DIAGONAL TO THE CURB INDICATE TYPE B (SPILL) CURB. DRAINAGE ARROWS RUNNING PARALLEL TO THE CURB INDICATE TYPE B CATCH CURB. CONTRACTOR SHALL TRANSITION BETWEEN TYPE B AND TYPE B CURB AT THE APPROPRIATE LOCATIONS TO PROVIDE THE INDICATED FLOW SCENARIO WITHOUT CREATING SPOTS IN THE CURB THAT DO NOT DRAIN DRY

N. MOUNT RUSHMORE ROAD
 100' R.O.W. OF RECORD



UTILITIES
 SOUTH DAKOTA ONE CALL NOTIFICATION CENTER
 115 EVERGREEN HEIGHTS DRIVE
 PITTSBURGH, PA 15229
 1-800-781-7474
 The location of existing underground utilities are shown in an approximate way only and have not been independently verified by the owners or its representative. The contractor shall determine the exact location of all existing utilities before commencing work and agree to be fully responsible for any and all damages which might be occasioned by the contractor's failure to exactly locate and preserve any and all underground utilities.

- LEGEND**
- △ CONTROL POINT
 - MANHOLE
 - FIRE HYDRANT
 - WATER MANHOLE
 - CURB STOP
 - ROOF DRAIN
 - POWER POLE
 - LIGHT POLE
 - RUSH
 - TRAIL
 - STAMP
 - PINE
 - SIGN
 - MAJOR CONTOUR (1')
 - MINOR CONTOUR (0.5')
 - PROPERTY LINE
 - CHAIN LINK FENCE
 - CURB & GUTTER
 - WATER LINE
 - POWER LINE
 - OVER HEAD POWER
 - TELEPHONE LINE
 - SANITARY SEWER LINE
 - STORM SEWER LINE
 - GAS LINE
 - CABLE LINE
 - FIBER LINE
 - ASPHALT SURFACE
 - CONCRETE SURFACE
 - GRAVEL
 - LANDSCAPING
- INDICATES FOUND SURVEY MONUMENT
 ○ INDICATES SET 3/8" REBAR MARKED "RENNER-ASSOC. 821"
 (W) MEASURED THIS SURVEY
 TC = TOP OF CURB
 TA = TOP OF ASPHALT
 TW = TOP OF WALK
 → DRAINAGE FLOW
 --- DESIGN CONTOUR



LOCATION

CONCRETE CURBS AND GUTTERS
 DRAINAGE ARROWS INDICATE THE FUNCTION OF THE CURB. ARROWS PERPENDICULAR OR DIAGONAL TO THE CURB INDICATE TYPE B (SPILL) CURBS. DRAINAGE ARROWS RUNNING PARALLEL TO THE CURB INDICATE TYPE B (CATCH) CURBS. CONTRACTOR SHALL TRANSITION BETWEEN TYPE B1 AND TYPE B2 CURBS AT THE APPROPRIATE LOCATIONS TO PROVIDE THE INDICATED FLOW SCENARIO WITHOUT CREATING SPOTS IN THE CURBS THAT DO NOT DRAIN (E).

CENTRAL HIGH SCHOOL
RENOVATIONS AND ADDITIONS
 RAPID CITY AREA SCHOOL DISTRICT #51-4
 RAPID CITY, SOUTH DAKOTA

GRADING
STAFF PARKING
AND SOUTH DOORS

PROJECT NO: 0814 DRAWING NO
 CIVIL #2416
 DRAFTER: PMM
 DATE: 2/26/2010

C1.14

If the drawing is not 30" x 42" it is a reduced print

LEGEND

- △ CONTROL POINT
- MANHOLE
- FIRE HYDRANT
- WATER VALVE
- CURB STEP
- ROOF DRAIN
- POWER POLE
- LIGHT POLE
- BUSH
- TREE
- STUMP
- PIPE
- SIGN

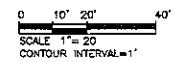
- GAS LINE (FORCE MAIN)
- GAS & GUTTER
- WATER LINE
- POWER LINE
- OVER HEAD POWER
- TELEPHONE LINE
- SANITARY SEWER LINE
- STORM SEWER LINE
- GAS LINE
- CABLE LINE
- FIBER LINE
- MAJOR CONTOUR (1')
- MAJOR CONTOUR (5')
- PROPERTY LINE

- ASPHALT SURFACE
- CONCRETE SURFACE
- GRAVEL
- LANDSCAPING

UTILITIES

SOUTH DAKOTA ONE CALL NOTIFICATION CENTER
 115 ENDORESEN WOODWYD DRIVE
 PITTSBURGH, PA 15229
 1-800-781-7474

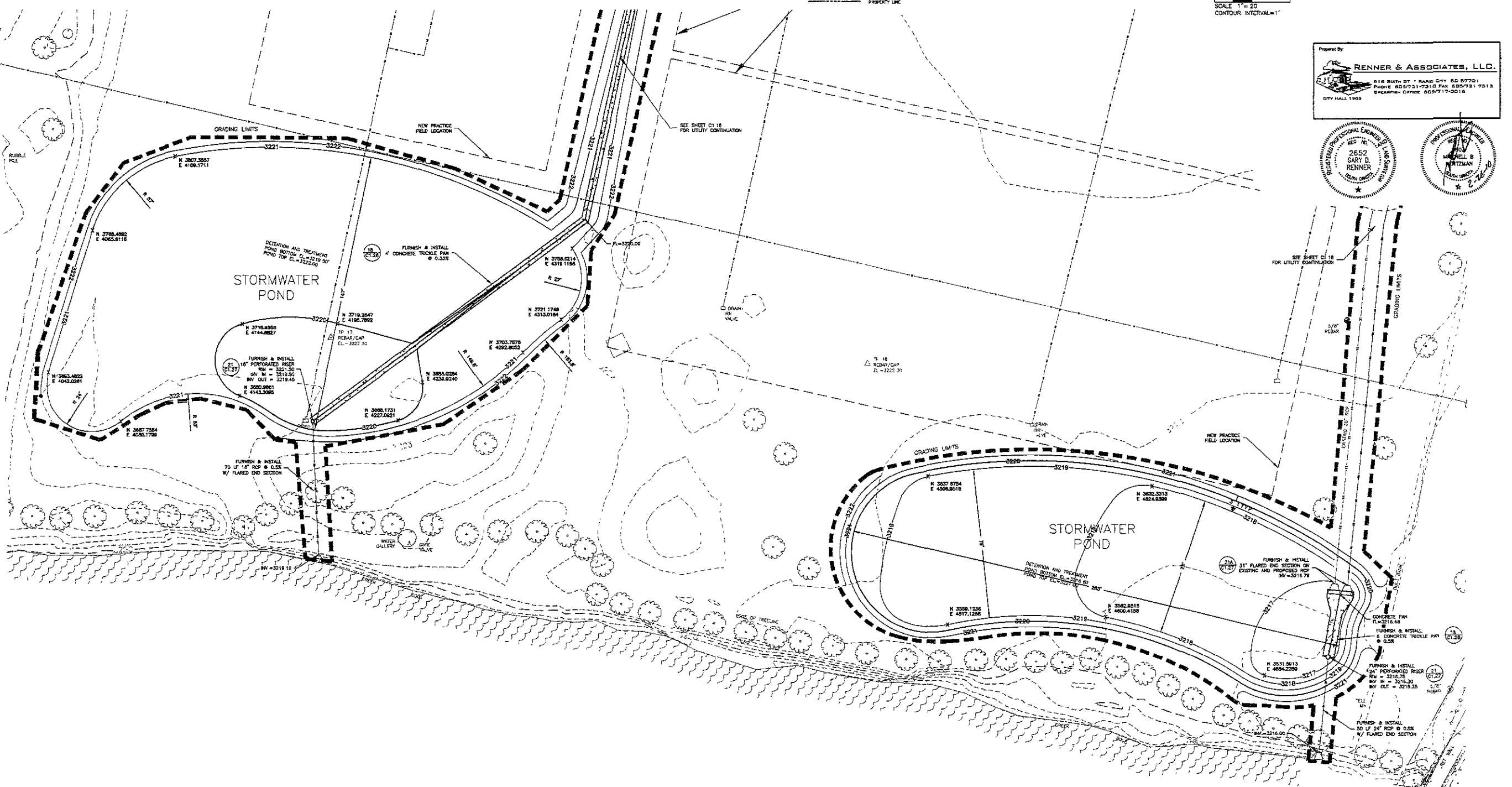
The locations of existing underground utilities are shown in an approximate way only and have not been independently verified by the owner or its representative. The contractor shall determine the exact location of all existing utilities before commencing work, and agree to be fully responsible for any and all damages which might be occasioned by the contractor's failure to exactly locate and preserve any and all underground utilities.



NEUMANN MONSON WICTOR
 ARCHITECTS
 701 DOUGLAS STREET SIOUX CITY, IOWA 51101
 712 255 3610 712 252.0484 FAX
 EMAIL: nmw@nmwarchitects.com

Prepared By:
RENNER & ASSOCIATES, L.L.C.
 616 North 57th Street, Rapid City, SD 57701
 Phone: 605/721-7310 Fax: 605/721-7313
 City Hall 1909
 BRANFORD OFFICE: 605/717-0016

Professional Engineer Seal for Gary D. Renner, License No. 2652, State of South Dakota.
 Professional Engineer Seal for M. B. Wertzman, License No. 2220, State of South Dakota.



CENTRAL HIGH SCHOOL
 RENOVATIONS AND ADDITIONS
 RAPID CITY AREA SCHOOL DISTRICT #51-4
 RAPID CITY, SOUTH DAKOTA

GRADING & LAYOUT
 STORMWATER PONDS

PROJECT NO 0814 DRAWING NO
 CIVIL #2416
 DRAFTER PMM
 DATE 2/26/2010

C1.15

If this drawing is not 30" x 42" it is a reduced print.