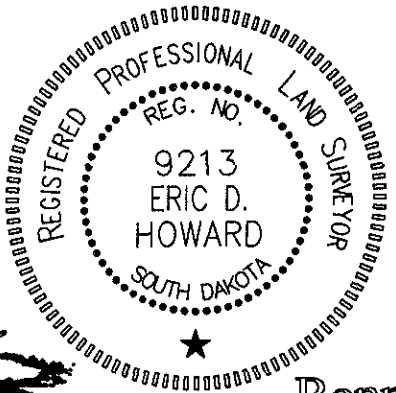
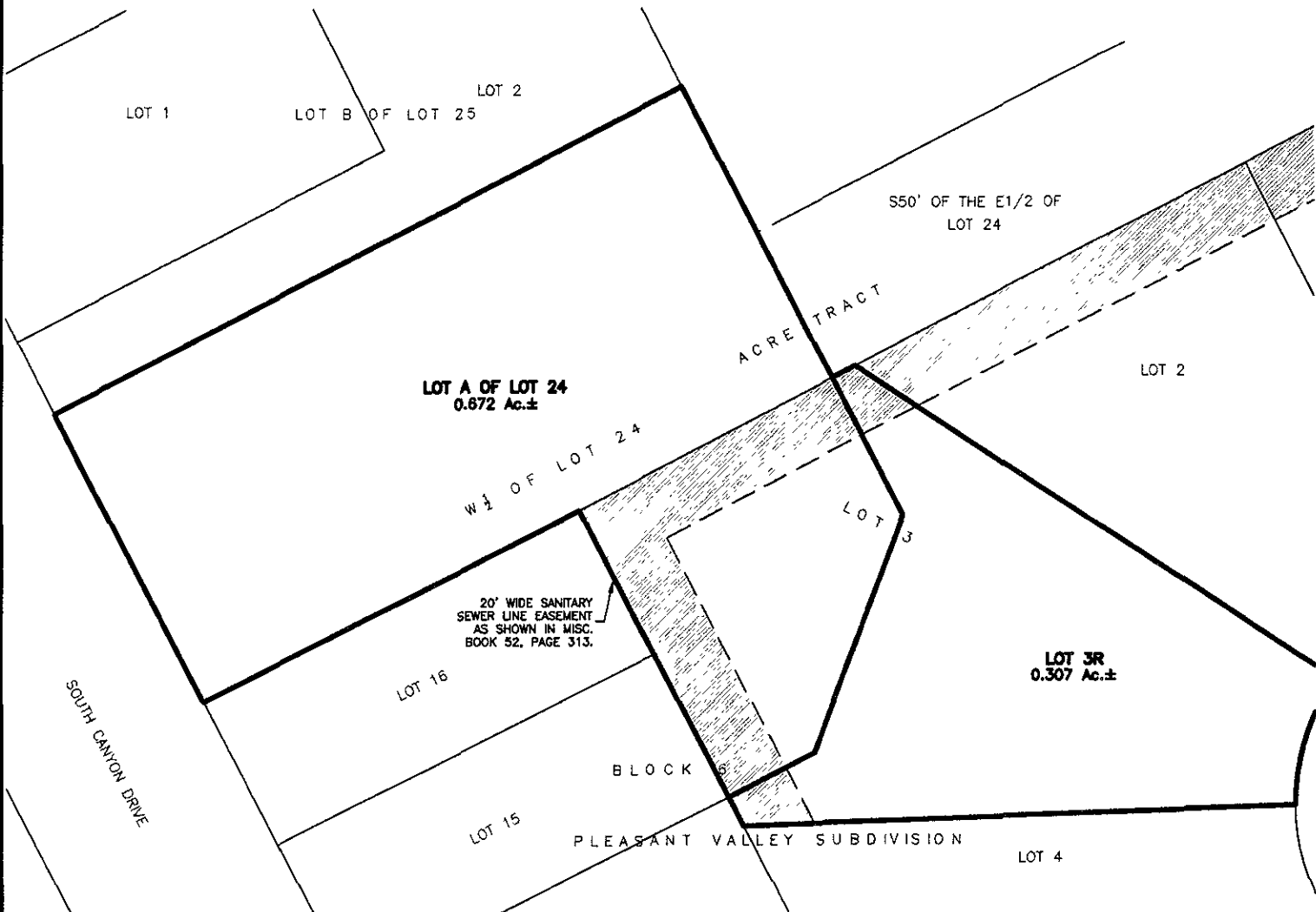


**LOT A OF LOT 24 OF ACRE TRACT, AND
 LOT 3R OF BLOCK 6, OF PLEASANT VALLEY SUBDIVISION**
 (formerly W1/2 of Lot 24 of Acre Tract, and Lot 3 of Block 6 of Pleasant Valley Subdivision)
 LOCATED IN THE SW1/4 OF THE SW1/4,
 SECTION 33, T2N, R7E, BHM
 RAPID CITY, PENNINGTON COUNTY, SOUTH DAKOTA



N.T.S.



CITY HALL 1903

Renner & Associates, LLC.

616 Sixth St. * Rapid City, SD 57701 * 605/721-7310
 FAX: 605/721-7313 * E-MAIL: Gary@RennerAssoc.com
 * Spearfish 605/717-0016 *