



FRONT ELEVATION

SCALE: 1/8" = 1'-0"

RECEIVED

MAR 12 2010

Rapid City Growth
Management Department



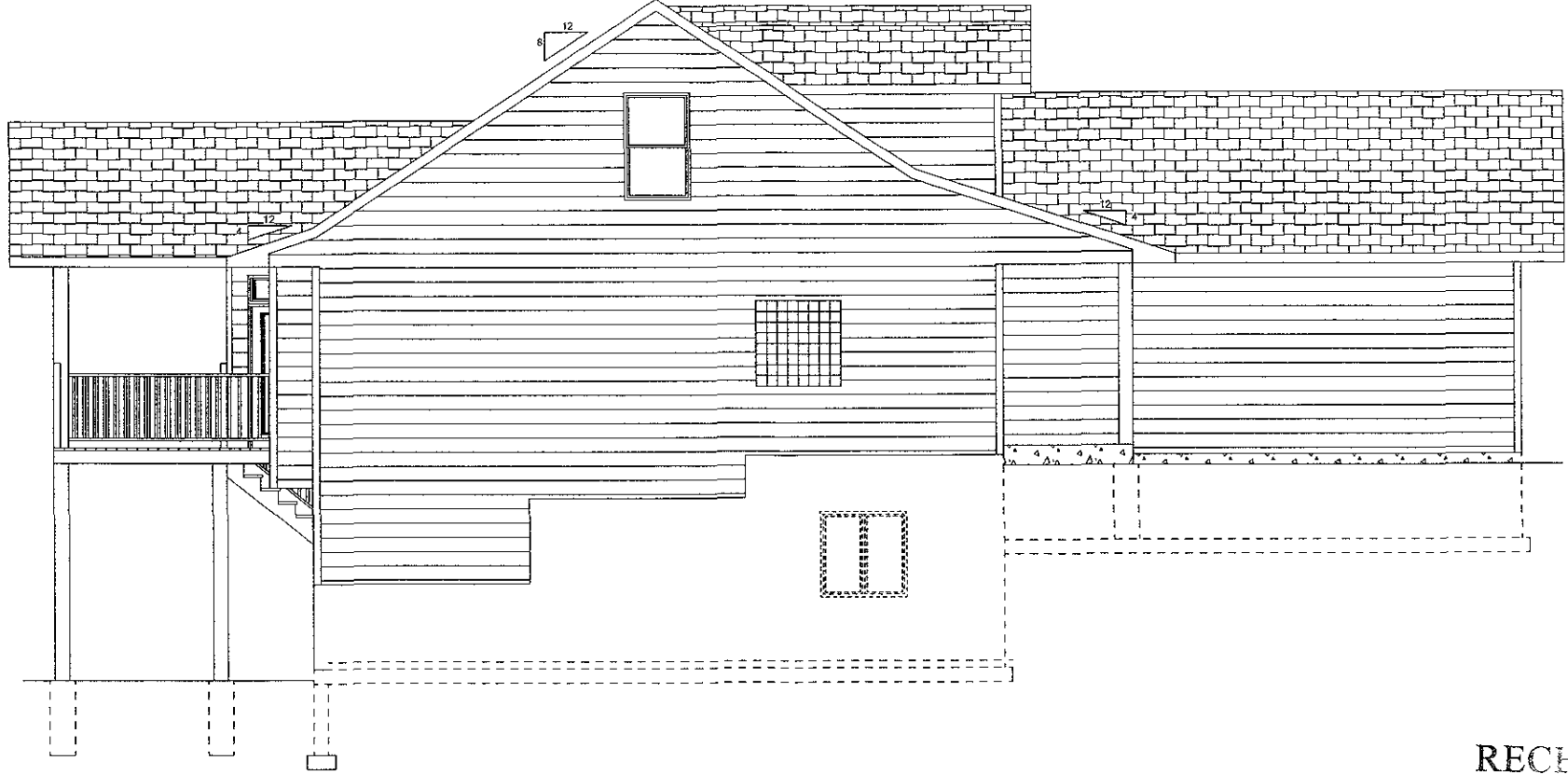
REAR ELEVATION

SCALE 3/16" = 1'-0"

RECEIVED

MAR 12 2010

Rapid City Growth
Management Department



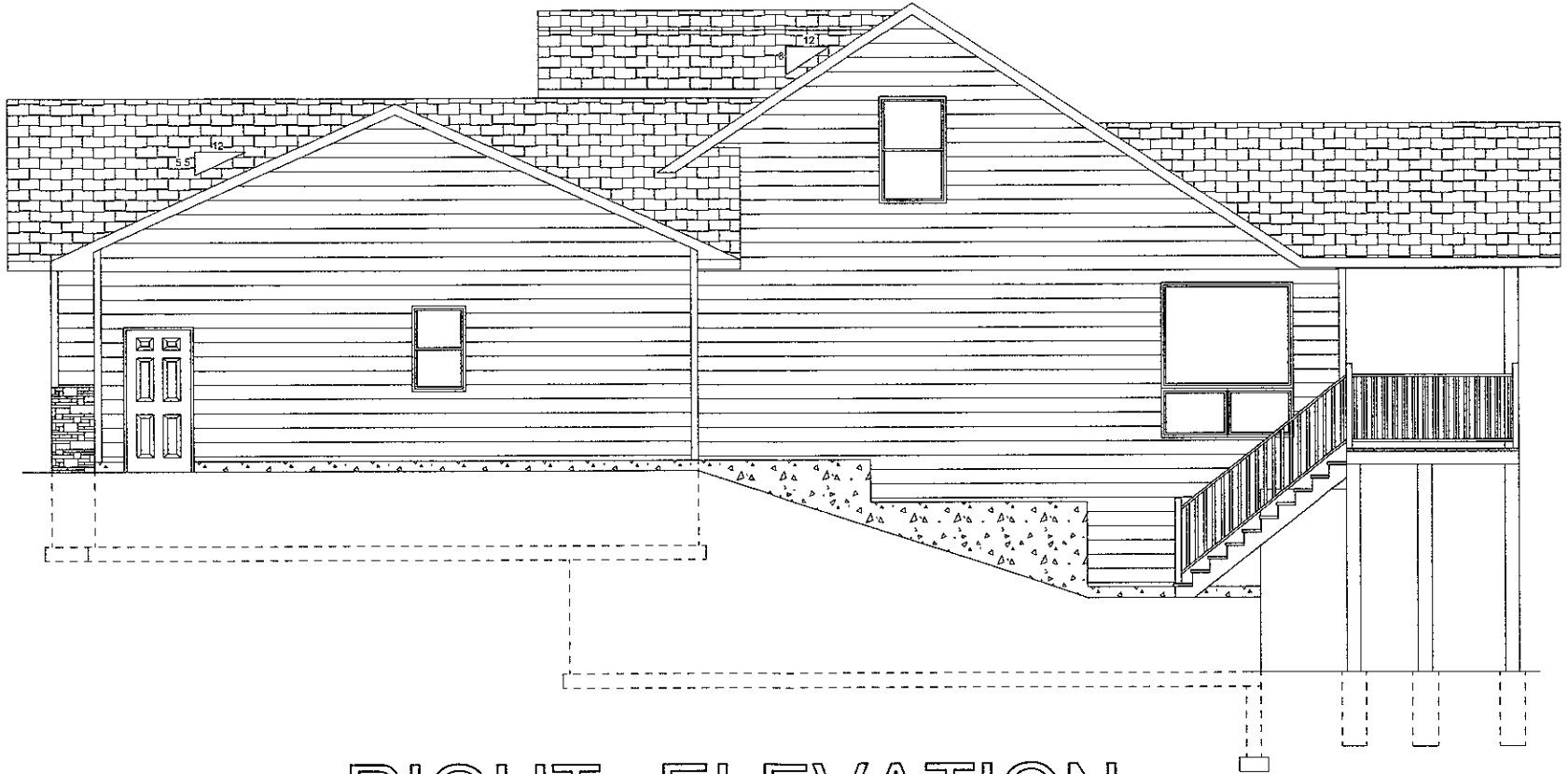
LEFT ELEVATION

SCALE 3/16" = 1'-0"

RECEIVED

MAR 12 2010

Rapid City Growth
Management Department



RIGHT ELEVATION

SCALE 3/16" = 1'-0"

RECEIVED

MAR 12 2010

Rapid City Growth
Management Department