

- ORIENT NUTS**
- 20 PERCENT ANNUAL HYDRANGEA (GLAZIA MULTIFLORA)
 - 10 PERCENT BLENNERIUM WINDBORNE (ACROPIUM SPICATUM)
 - 10 PERCENT CINCINNABARK (ACROPIUM REPENS L.)
 - 10 PERCENT PERENNIAL BIRDSNAP (GLAZIA PERENNIS)
 - 10 PERCENT HAIL FERTILE DISTICHIA (PERENNIAL FERRELLA 3')
 - 10 PERCENT CANTINA BLUEWAVE (PINA COMPACTA TORNA)
 - 10 PERCENT STYLI BLENZERIA (MONDOPIUM SCOPARIUM)
 - 10 PERCENT HARD FESCUE (PASTILIA LONGICOLA)
- TO BE HYDRANGEA @ A RATE OF 30 LBS/10,000 SF

NOTE:
EXISTING LANDSCAPE
CONTRAST LINE
(1/4"=20' POINTS)
TO REMAIN INTACT

PLANT SCHEDULE

QUANTITY	PLANT SYMBOL	SYMBOL TYPE	COMMON NAME	SIZE	TYPE	DETAIL
1	(Symbol)	PP	ROCK PLUMBER "SILVER" COLONADO BLUE SPRUCE	2" CAL	B & B	2/L3.01
2	(Symbol)	PP	PRUNE PONDIFERA PONDIFERA PRUNE	2" CAL	B & B	2/L3.01
3	(Symbol)	OV	QUERCUS MICROCARPA BUR OAK	2" CAL	B & B	1/L3.01
2	(Symbol)	OT	OLEOSTA TREACROSTRA "SPOCK" SPOCK HONEYLOCUST	2" CAL	B & B	1/L3.01
6	(Symbol)	BT	NYCTAGIA NYCTAGIA NYCTAGIA NYCTAGIA	1.5" CAL	B & B	1/L3.01
6	(Symbol)	TV	FRAXUS VIRGINIANA "SILBERT" SILBERT CHERRYBERRY	1.5" CAL	B & B	1/L3.01
4	(Symbol)	TV	POPULUS TREMULOIDES CRACKING ASPEN	1.5" CAL	B & B	1/L3.01
4	(Symbol)	TV	AMPHOCARPUS X OXYRHOIZA "ALPINE BELLINI" ALPINE BELLINI APPLE SERVICEBERRY	1.5" CAL	B & B	1/L3.01
74	(Symbol)	OC	JUNIPERUS COMMUNIS "WINDY" ALPINE CYPRESS JUNIPER	2" CAL	CHTR.	3/L3.01
25	(Symbol)	OC	PRUNUS MOGENSES SMOOTH BRASS MOUNTAIN PRUNE	2" CAL	CHTR.	3/L3.01
1	(Symbol)	OC	JUNIPERUS SCOPULORUM "WINDY" WINDY JUNIPER	2" CAL	CHTR.	3/L3.01
14	(Symbol)	OC	ROSES "ALPINE GREEN MOON" DWARF ALPINE CURRENT	2" CAL	CHTR.	3/L3.01
38	(Symbol)	OC	FRAXUS COCCYNE "THAMES BUTTER" THAMES BUTTER MOUNTAIN SAND CHERRY	2" CAL	CHTR.	3/L3.01
22	(Symbol)	OC	CORNUS SPICATA "WALKER'S COMPACT" WALKER'S COMPACT RED DOGWOOD	2" CAL	CHTR.	3/L3.01
32	(Symbol)	OC	PRUNUS TREMBLANS THREE LEAVED SLAMAC	2" CAL	CHTR.	3/L3.01
10	(Symbol)	OC	PRUNUS GLABRA SMOOTH SLAMAC	2" CAL	CHTR.	3/L3.01
4	(Symbol)	OC	YERBIBENA LINDLEI "MORICAN" MORICAN WHITETHORN THORN	2" CAL	CHTR.	3/L3.01
11	(Symbol)	OC	AMPHOCARPUS QUADRANGULUS "WINDY" WINDY	1" CAL	CHTR.	4/L3.01
186	(Symbol)	*	CALLUNA VULGARIS X ACUTIFOLIA "WINDY" WINDY RED GRASS	1" CAL	CHTR.	4/L3.01
82	(Symbol)	*	CALLUNA VULGARIS X ACUTIFOLIA "WINDY" WINDY RED GRASS	1" CAL	CHTR.	4/L3.01
10	(Symbol)	AO	ACHILLEA MILLEFOLIUM "DWARF PATRIE" DWARF PATRIE YARROW	1" GAL	CHTR.	4/L3.01
37	(Symbol)	AO	ARVISA ALPINA "DWARF" DWARF ROCKROSE	1" GAL	CHTR.	4/L3.01
10	(Symbol)	AS	APPENDIX SCABROVATA SLIVER MOON WOODROSE	1" GAL	CHTR.	4/L3.01
47	(Symbol)	AL	CORONILLA ALBA MOONWAVE BLUEBELL	1" GAL	CHTR.	4/L3.01
43	(Symbol)	SA	EDENRUBUS "LITTLE WINDY" LITTLE WINDY CORDELENDOR	1" GAL	CHTR.	4/L3.01
30	(Symbol)	OF	MATELECOX STRUTTOFLORES GOSCH FISH	1" GAL	CHTR.	4/L3.01
30	(Symbol)	HH	HELIPHYSSEMELOIDES "DWARF FISH" DWARF FISH FLY	1" GAL	CHTR.	4/L3.01
37	(Symbol)	HS	HIMANTOCALUS "STELLA OF GHO" STELLA OF GHO	1" GAL	CHTR.	4/L3.01
30	(Symbol)	SKP	SAURUS "DWARF TOWER" DWARF TOWER	1" GAL	CHTR.	4/L3.01
33	(Symbol)	WH	HEPATELIPARIS "WALKER'S LOW" WALKER'S LOW CARNIUM	1" GAL	CHTR.	4/L3.01
35	(Symbol)	RS	PERENNIAL LINDLEI RUSSIAN SAGE	1" GAL	CHTR.	4/L3.01
20	(Symbol)	SAL	SOLANUM "SILVER JOY" SILVER JOY SEDUM	1" GAL	CHTR.	4/L3.01
32	(Symbol)	SL	SILVER LARK LARK'S EAR	1" GAL	CHTR.	4/L3.01
180	(Symbol)	OC	PERENNIALS AND GRASSES (SEE PLAN FOR TYPES)	1" OC OF POTS	LANSE	3/L3.01
450.00 SF	(Symbol)	RF	RAVER ROCK BED AREAS	3"-5"	CLEAN ROCK	
12,387.00 SF	(Symbol)		SEEDED NATURAL GRASS AREAS; SEE CROSS SECTION THIS SHEET	SEEDING		

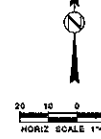
PLANTING NOTES

1. LANDSCAPE ARCHITECT/CONTRACTOR SHALL COORDINATE INSTALLATION OF ALL LANDSCAPE/PLANTING MATERIALS WITH GENERAL CONTRACTOR.
2. GENERAL CONTRACTOR IS TO ESTABLISH EXISTING SITE CONDITIONS AND REMOVAL OF EXISTING MATERIALS TO BE INSTALLED AT PLANTING SITE (DEPTH AND WIDTH) AND TO BE INSTALLED AT PLANTING SITE (DEPTH AND WIDTH).
3. CONTRACTOR TO PROVIDE ALL NECESSARY CONSTRUCTION ACTIVITIES WITH UNDER GRASS.
4. CONTRACTOR TO SUPPLY AND INSTALL APPROVED PLANTING MEDIA OR TOPSOIL IN ALL AREAS TO A DEPTH OF 4" FOR TURF AND NATURAL GRASS AREAS AND 8" FOR ALL PLANTING BEDS. SUFFICIENT FOR 12" DEPTH TO LOCUS SOIL.
5. ALL PLANTING MEDIA SHALL BE ACCORDING TO THE SOFT SHEET 13.01 IF NOT SHOWN, INSTALL ACCORDING TO THE SOFT SHEET 13.01.
6. CONTRACTOR SHALL VERIFY ALL PLANT QUANTITIES, THE ILLUSTRATED LOCATIONS SHALL BE SET TO CENTER.
7. BEFORE INSTALLATION OF PLANT MATERIAL AND PROTECTION, CONTRACTOR SHALL REMOVE ALL ROCKS AND BRUSH AND REMOVE SURFACES CLEAN OF DEBRIS. PROTECT ALL PLANT AND PROTECTION MATERIALS FROM DAMAGE TO THE LANDSCAPE OPERATIONS OR ACTIVITIES BY OTHER CONTRACTORS AND TRADES. MAINTAIN PROTECTION DURING INSTALLATION AND MAINTENANCE PERIOD. DO NOT REMOVE OR REPLACE ANY DAMAGED PLANTING MATERIALS OR PROTECTION MATERIALS.
8. IN THE EVENT OF ANY DISCREPANCIES, NOTIFY THE LANDSCAPE ARCHITECT IMMEDIATELY.
9. ALL PLANTING INSTALLATION WILL BE UNLESS OTHERWISE NOTED BY LANDSCAPE ARCHITECT.
10. DOORWAY INSTALLATION OF ALL PLANTING AND PROTECTION SHALL BE COMPLETED FROM THE LANDSCAPE ARCHITECT.
11. 1/2" - 5/8" RIVER ROCK BENCH OR BERRIED HARDWOODS NEED TO BE PLACED OVER TURF LANDSCAPE FABRIC ON ALL PLANT BED AREAS AS SHOWN ON PLAN. (OTHER SYMBOLS FOR SELECTION BY LANDSCAPE ARCHITECT).
12. WEED BARRIERS TO BE "THREE FOOT" AS MANUFACTURED BY LEHR INDUSTRIES (FARFAR, INC.) OR EQUIVALENT. DIVISION METHOD: 18" WIDE X 12" HIGH. (SEE PLAN FOR TYPES). (SEE PLAN FOR TYPES).
13. LANDSCAPE ARCHITECT TO HAND SELECT PLANT MATERIALS TO ORDER WITH GENERAL CONTRACTOR TO NOTIFY LANDSCAPE ARCHITECT 1 WEEK IN ADVANCE PRIOR TO ORDERING PLANTS TO SET UP PLANT DELIVERY TIME.
14. LANDSCAPE ARCHITECT TO FIELD LOCATE PLANT MATERIALS ON-SITE WITH LANDSCAPE CONTRACTOR. CONTRACTOR TO NOTIFY LANDSCAPE ARCHITECT 1 WEEK IN ADVANCE PRIOR TO PLACEMENT OF PLANT MATERIALS.
15. SUBMIT TURF GRASS BEDS AND TO LANDSCAPE ARCHITECT FOR REVIEW AND APPROVAL PRIOR TO ORDERING.
16. LANDSCAPE CONTRACTOR TO LOCATE AND PROTECT ALL EXISTING ELEMENTS AND UTILITIES DURING PLANTING/INSTALLATION.

BEFORE ANY GRASS/CONTRACTOR TO LOCATE ALL EXISTING UTILITIES.

LANDSCAPE ORDINANCE SUMMARY

TOTAL AREA OF SITE: 21,822 SF
TOTAL AREA OF BUILDING: 2,180 SF
TOTAL LANDSCAPE POINTS REQUIRED FOR DAKOTA STEAKHOUSE: 2,828 PTS
LARGE TREES (6) @ 2000 PFS EACH: 12,000 PTS
MEDIUM TREES (6) @ 1000 PFS EACH: 6,000 PTS
SMALL TREES (14) @ 500 PFS EACH: 7,000 PTS
SHRUBS & GRASSES (230) SHRUBS & (262) GRASSES @ 200 PFS EACH: 12,500 PTS
ALPINE GROUP PLANTS (PERENNIALS) 112 ST @ 100 PFS PER ST: 11,200 PTS
NATURAL GRASS 1300.1 SQ @ 10 PFS PER SQ: 13,000 PTS
TOTAL LANDSCAPE POINTS PROVIDED AT DAKOTA STEAKHOUSE: 18,000 PTS
TOTAL LANDSCAPE POINTS PROVIDED AT COMPOST: 88,328 PTS
TOTAL LANDSCAPE POINTS PROVIDED FOR MAJOR AMENDMENT TO PCD: 31,528 PTS



DAKOTAH STEAKHOUSE

RAPID CITY, SOUTH DAKOTA

JOB NUMBER: 08-1041401
DATE: 02/25/10

REVISIONS

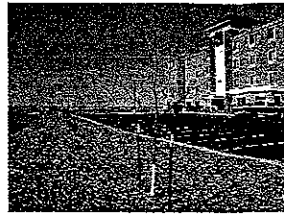
PLANTING PLAN

SHEET L3.00

517 7th street rapid city sd 57701
ph 605 942 9470 fax 605 342 2377

FOLIOFRONT
www.foliofront.com
ARCHITECTURE | ENGINEERING
DESIGN | INC
GSI SURVEYING



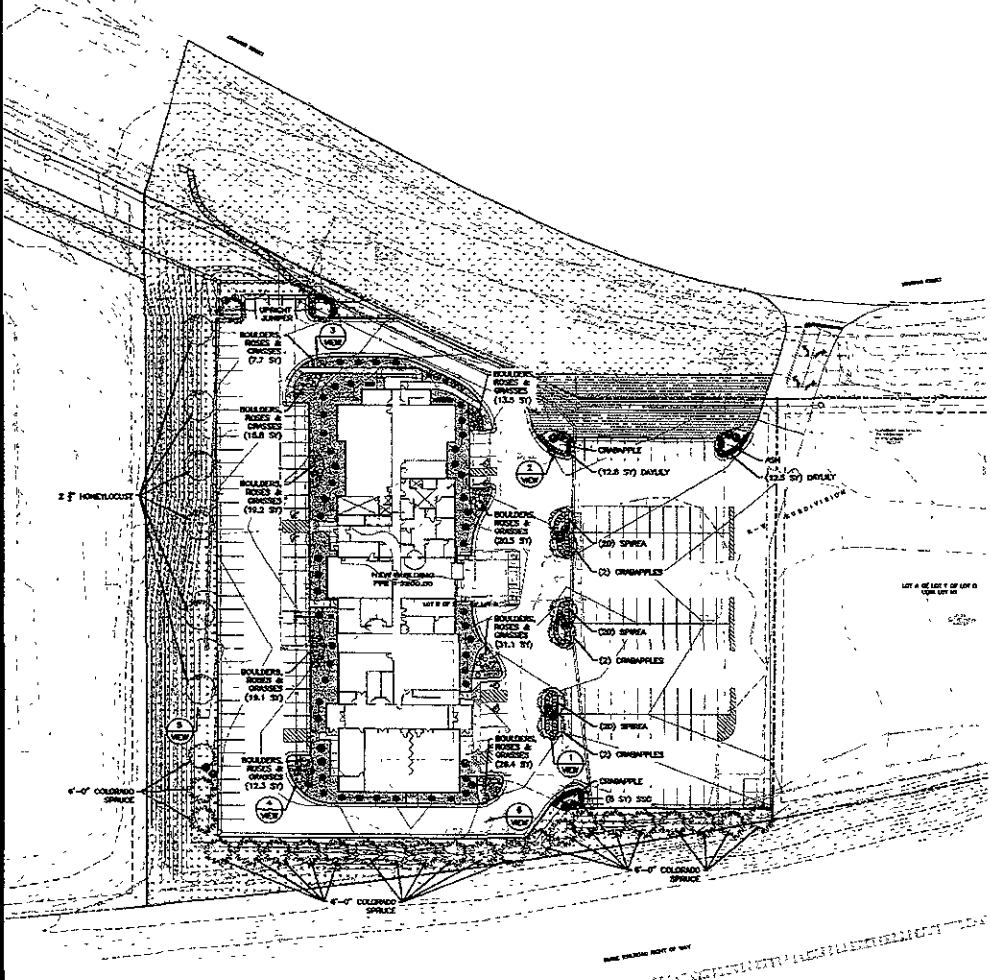


10PD028



SHEET TITLE: EXHIBIT A

1



LANDSCAPE POINTS AS SUBMITTED

LOT SIZE = 106,675 SF
BUILDING SIZE (NOT INCLUDING COVERIES) = 22,410 SF
REQUIRED LANDSCAPE POINTS = 134,528
GRASS (ON RIGHT OF WAY) 4,877 SF @ 10 PPS/SF = 48,770 PPS HOWEVER, 25% OF TOTAL PPS ALLOWED
GRASS (ON LOT) 4,408 SF @ 10 PPS/SF 44,080 PPS
LARGE TREES (CONIFEROUS) 24 x 2000 PPS EACH 48,000 PPS
MEDIUM TREES (DECIDUOUS) 8 x 1000 PPS EACH 8,000 PPS
SHRUBS 127 x 200 PPS EACH 25,400 PPS
GROUND COVER 45.6 SF @ 100 PPS/SF 4,560 PPS
TOTAL POINTS PROVIDED = 172,502

LANDSCAPE POINTS AS REVISED

LOT SIZE = 106,675 SF
BUILDING SIZE (NOT INCLUDING COVERIES) = 22,410 SF
REQUIRED LANDSCAPE POINTS = 134,528
GRASS (ON RIGHT OF WAY) 4,877 SF @ 10 PPS/SF = 48,770 PPS HOWEVER, 25% OF TOTAL PPS ALLOWED
GRASS (ON LOT) 4,408 SF @ 10 PPS/SF 44,080 PPS
LARGE TREES (CONIFEROUS) 25 x 2000 PPS EACH 50,000 PPS
MEDIUM TREES (CONIFEROUS) 15 x 1000 PPS EACH 15,000 PPS
SHRUBS 245 x 200 PPS EACH 49,000 PPS
GROUND COVER 53.5 SF @ 100 PPS/SF 5,350 PPS
TOTAL POINTS PROVIDED = 207,792

LANDSCAPE NOTES

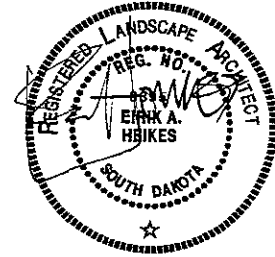
- LANDSCAPE CONTRACTOR IS TO LOCATE UTILITIES PRIOR TO CONSTRUCTION. LOCATIONS SHOWN ON SURVEY SHALL BE LOCATED BY OWNER PRIOR TO THE GULF AND ACTUAL FIELD LOCATIONS MAY VARY. LOCATION OF NEW UTILITIES INSTALLED DURING CONSTRUCTION MAY VARY FROM LOCATIONS SHOWN ON DESIGN PLANS.
- IRRIGATION SYSTEM IS TO BE DESIGNED BY CONTRACTOR. AREAS TO BE IRRIGATED ARE SHOWN ON IRRIGATION PLAN. IRRIGATION AREAS IMMEDIATELY ADJACENT TO BUILDING IS NOT TO BE IRRIGATED AS NOTED BY GEOTECHNICAL REPORT.
- CONTRACTOR IS TO VERIFY QUANTITIES AND AVAILABILITY OF PLANTS AND MATERIALS. COORDINATE DISCREPANCIES WITH OWNER.
- MAINTAIN POSITIVE DRAINAGE AWAY FROM BUILDINGS IN ALL LOCATIONS. WHERE AREAS DIRECT DRAINAGE TO STORM PITS, STORM AREAS, FLOWED AREAS, BUILDING SITE GRATING AND DRAINAGE BLOCKS COORDINATE WITH SITE CONTRACTOR.
- EXISTING TREES ON SITE IS LIMITED. FURNISH AND PLACE TOPSOIL TO 7" MINIMUM DEPTH IN 4" INCHES IN IRRIGATED AREAS INCLUDING ALL GRASS AREAS. REMOVE STUMP LARGER THAN 4" DIAMETER, STUMP AND STUMP FROM AREAS TO BE PLANTED.
- NEW IRRIGATED AREAS AND ROAD WITH GRASS SHOWN ON LANDSCAPE PLAN IS FOR LANDSCAPE POINT CALCULATION PURPOSES. CONTRACTOR IS ONLY TO BE RESPONSIBLE FOR PLANTING. FURNISH AND PLACE TOPSOIL TO 7" MINIMUM DEPTH IN 4" INCHES IN IRRIGATED AREAS INCLUDING ALL GRASS AREAS. REMOVE STUMP LARGER THAN 4" DIAMETER, STUMP AND STUMP FROM AREAS TO BE PLANTED.
- SEEDING AREAS MUST BE HYDRATED OR MOISTENED IF DRIED.
- ALL GRASS AND PLANTS SHALL BE WATERED BY CONTRACTOR UNTIL ESTABLISHED.
- CONCRETE WALKWAYS PATH IS TO BE 1/2" INCH AGGREGATE BASE COURSE PLACED AND COMPACTED TO A DEPTH OF 4" INCHES. PATH IS TO BE 4" FEET WIDE.
- ROCK SLOPE IS TO BE 1/2" INCH WEDGE SHAPED IRON PIPES PLACED AT A DEPTH OF 3" INCHES. PLACE AND NUMBER FIBRE UNDER PIPES AS NOTED.
- RED CORNER MARKER IS TO BE PLACED AT A DEPTH OF 3" INCHES. PLACE WELD BARRIER FABRIC UNDER PIPES.
- SEED BARRIER FABRIC IS TO BE A MINIMUM HEIGHT OF 3" GUNDS PER SQUARE YARD.
- PLANTING SHALL BE FROM APRIL 15 TO LEAST 15 OF SEPTEMBER 1 TO NOVEMBER 1 UNLESS AUTHORIZED BY OWNER.
- TREES SHALL BE STRONGER AND FREE OF DEFECTS. DECIDUOUS TREES SHALL BE PLACED.
- CONTRACTOR IS TO GUARANTEE PLANTS FOR A PERIOD OF ONE YEAR FROM THE PROJECT IS ACCEPTED. CONTRACTOR SHALL REPLACE DEAD OR DEFECTED PLANTS DURING THIS TIME.

LANDSCAPE NOTE

- ALL NOTES MADE FROM FIELD VISIT BY ERIC HERZOG, LANDSCAPE ARCHITECT ON 03/18/2010.

LEGEND

- CONIFEROUS TREES THAT WERE ADDED AFTER DESIGN
- DECIDUOUS TREES THAT WERE ADDED AFTER DESIGN
- SPRINGS THAT WERE ADDED AFTER DESIGN
- SHRUBS THAT ARE NOW EXISTENT IN AREAS



RECEIVED

MAR 19 2010

COMFORT SUITES LANDSCAPE EXHIBIT

RAPID CITY, SOUTH DAKOTA

JOB NUMBER: 08-041-01

ARCHITECTURE | ENGINEERING GIS | SURVEYING

517 7th Street, Rapid City, SD 57701
ph: 605.342.9470 fax: 605.342.2377
www.4from1st



FOUR FROM ONE DESIGN, INC.

Copyright 2008. All rights reserved. No part of this document may be reproduced in any form or by any means without permission from FourFromOne Design, Inc.