

CONTROL POINTS				
Point #	Northing	Eastng	Elevation	Description
22	9651.65	10880.07	3197.45	CP
24	9709.04	10704.72	3198.20	CP
25	9467.77	10725.18	3199.59	CP

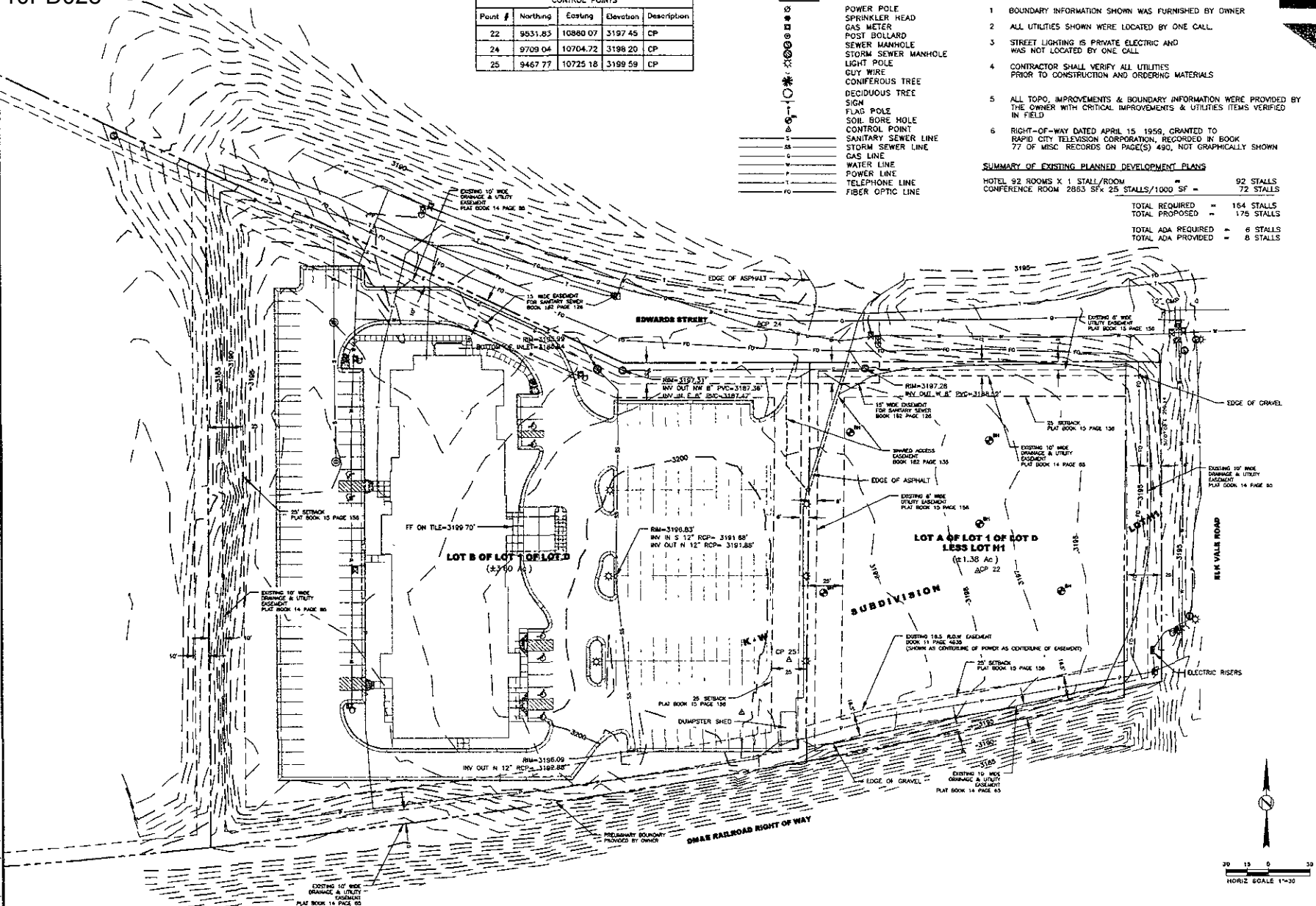
LEGEND

	POWER POLE
	SPRINKLER HEAD
	GAS METER
	POST BOLLARD
	SEWER MANHOLE
	STORM SEWER MANHOLE
	LIGHT POLE
	GUY WIRE
	CONFERSOUS TREE
	DECIDUOUS TREE
	SIGN
	FLAG POLE
	SOIL BORE HOLE
	CONTROL POINT
	SANITARY SEWER LINE
	STORM SEWER LINE
	GAS LINE
	WATER LINE
	POWER LINE
	TELEPHONE LINE
	FIBER OPTIC LINE

- NOTES:**
- BOUNDARY INFORMATION SHOWN WAS FURNISHED BY OWNER
 - ALL UTILITIES SHOWN WERE LOCATED BY ONE CALL.
 - STREET LIGHTING IS PRIVATE ELECTRIC AND WAS NOT LOCATED BY ONE CALL
 - CONTRACTOR SHALL VERIFY ALL UTILITIES PRIOR TO CONSTRUCTION AND ORDERING MATERIALS
 - ALL TOPO, IMPROVEMENTS & BOUNDARY INFORMATION WERE PROVIDED BY THE OWNER WITH CRITICAL IMPROVEMENTS & UTILITIES ITEMS VERIFIED IN FIELD
 - RIGHT-OF-WAY DATED APRIL 15 1956, GRANTED TO RAPID CITY TELEVISION CORPORATION, RECORDED IN BOOK 77 OF MISC RECORDS ON PAGE(S) 490, NOT GRAPHICALLY SHOWN

SUMMARY OF EXISTING PLANNED DEVELOPMENT PLANS

HOTEL 92 ROOMS X 1 STALL/ROOM	=	92 STALLS
CONFERENCE ROOM 2885 SF X 25 STALLS/1000 SF	=	72 STALLS
TOTAL REQUIRED	=	164 STALLS
TOTAL PROPOSED	=	175 STALLS
TOTAL ADA REQUIRED	=	6 STALLS
TOTAL ADA PROVIDED	=	8 STALLS



DAKOTAH STEAKHOUSE

ARCHITECTURE | ENGINEERING | SURVEYING

517 7th street rapid city sd 57701
605.342.9470 fax 605.342.2377
www.4front.biz

ph

PROFESSIONAL SEAL
STATE OF SOUTH DAKOTA
NAME: A. LATT
NO. 031710

JOB NUMBER: 08-1641-001
DATE: 08/21/10

REVISIONS

EXISTING SITE CONDITIONS

SHEET V1.01

C:\dwd\30\Projects\08-1641-001\DWG\DWG-STEAKHOUSE\08-1641-001-SK010.dwg March 11, 2010 - 1:53pm PMSK