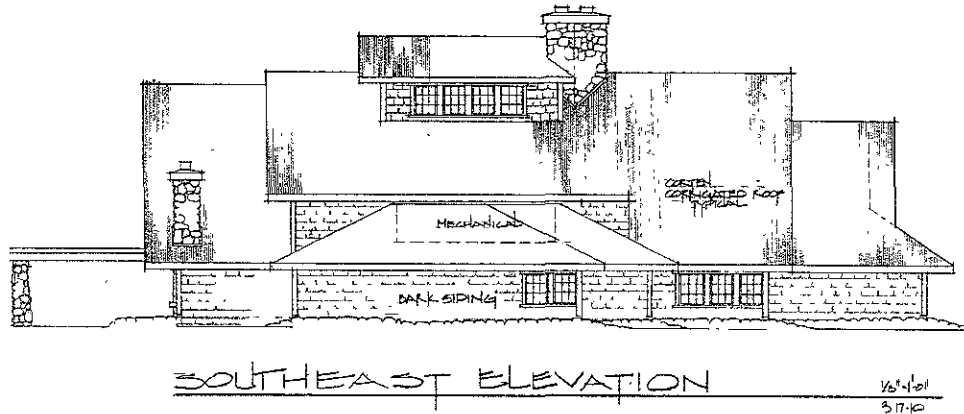
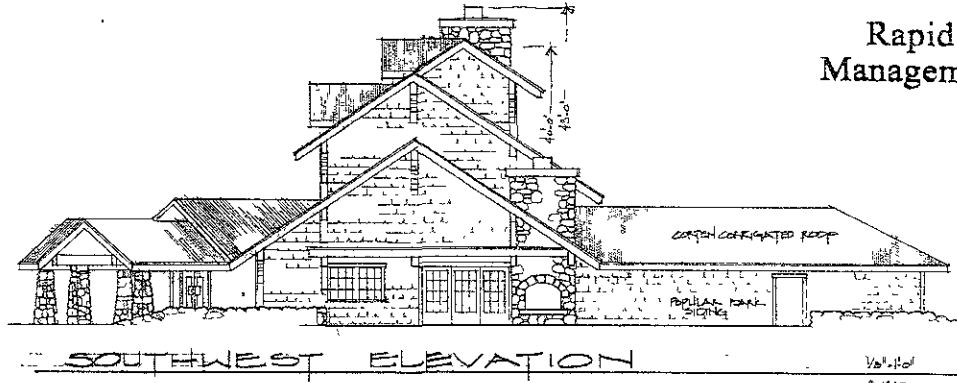


RECEIVED

MAR 19 2010

Rapid City Growth
Management Department



517 7th Street Rapid City, SD 57101
 ph: 605.342.0210 fax: 605.342.2377
 www.dreamline.com

DAKOTAH
STEAKHOUSE

JOB NUMBER 091841003
DATE 03/17/2010

RAPID CITY, SOUTH DAKOTA

REV	DESCRIPTION

EXTERIOR
ELEVATIONS
SHEET
A2.00

FILE LOCATION: 1041_xplan2.dwg PLOT DATE: 3/18/2010 5:06 PM



Dakota Steakhouse - Perspective

Materials

- Poplar Bark Siding
- River Rock Stone Masonry
- Douglas Fir Rough-sawn Timbers
- Corrugated Cor-ten Steel roof

Building Height

- 40 ft. to the top of ridge
- 43 ft. to the top of chimney