

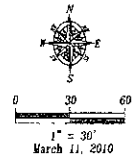
RECEIVED

MAR 18 2010

Rapid City Growth Management Department

PRELIMINARY

- LEGEND**
- Sanitary Sewer Manhole (Unless noted)
  - Fire Hydrant
  - Water Valve
  - Curb Stop
  - Utility Pole
  - Guy Wire
  - Electric Transformer
  - Telecommunications Pedestal
  - Natural Gas Meter
  - Sign
  - MGI Box
  - Fence Line
  - Underground Electric
  - Overhead Utility Line
  - Underground Telephone
  - Storm Sewer
  - Sanitary Sewer Line
  - Water Main
  - Found Survey Monument as noted
  - Set Brass with cap marked "R/W Fisk 6565"
  - Control Point
  - Tree (Coniferous)
  - Tree (Deciduous)



**NOTES**

Scale of Bearings - Assumed  
 Contour Interval 0.5'  
 Datum - NGVD29 (from City BM Net)  
 Minor detail may not be shown due to snow cover at the time of survey.

Utilities shown are from visual inspection, sketches provided by individual service providers, and Utility Locates performed by South Dakota One Call. The actual location of utilities and service lines may vary from the information shown herein. We assume no liability for utilities and services that are not marked or are incorrectly defined by utility locators.

Thompson Tracts

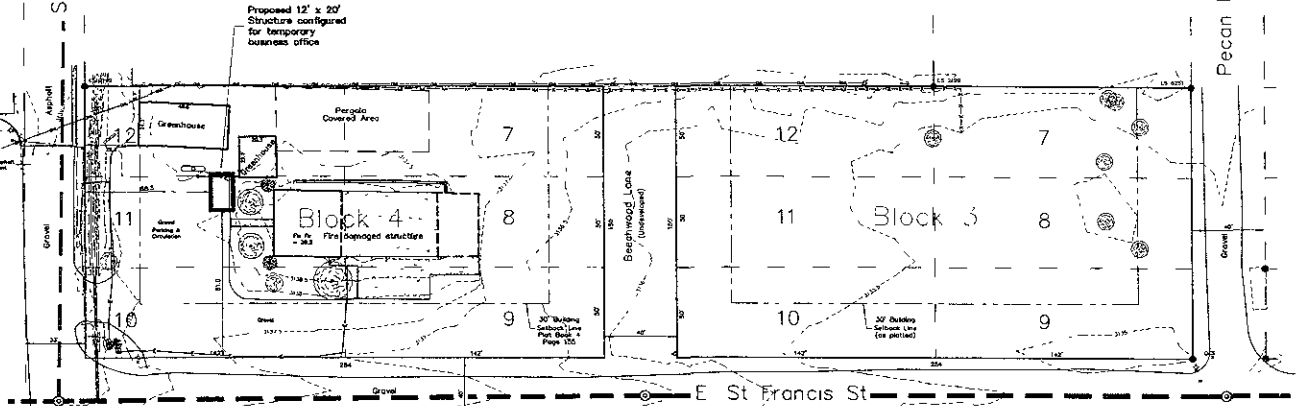
Lot 1

Sedivy Lane

Lot A

Pecan Lane

Block 2



Lot 3

Block 5

ONE CALL  
 BEFORE DIGGING  
 1-800-481-1414

The information herein is a copy of the original and specific to the project and purpose as stated. It is not to be used for any other purpose at any time, and is not to be reproduced or altered in any way without the written consent of the engineer.

Topographic Map and Boundary Survey  
 Valley Green Lawn & Garden Center  
 1996 Sedivy Lane  
 Lots 7-12 of Block 3 & Lots 7-12 of Block 4  
 Rapid Valley Subdivision  
 Rapid City, Pennington County, South Dakota

Surveyed by M.L.B.  
 Date 3/10/10  
 Drawn by RWF  
 Date 3/12/10  
 Checked by RWF  
 Revisions

Project No. 10-03-02

Existing Site