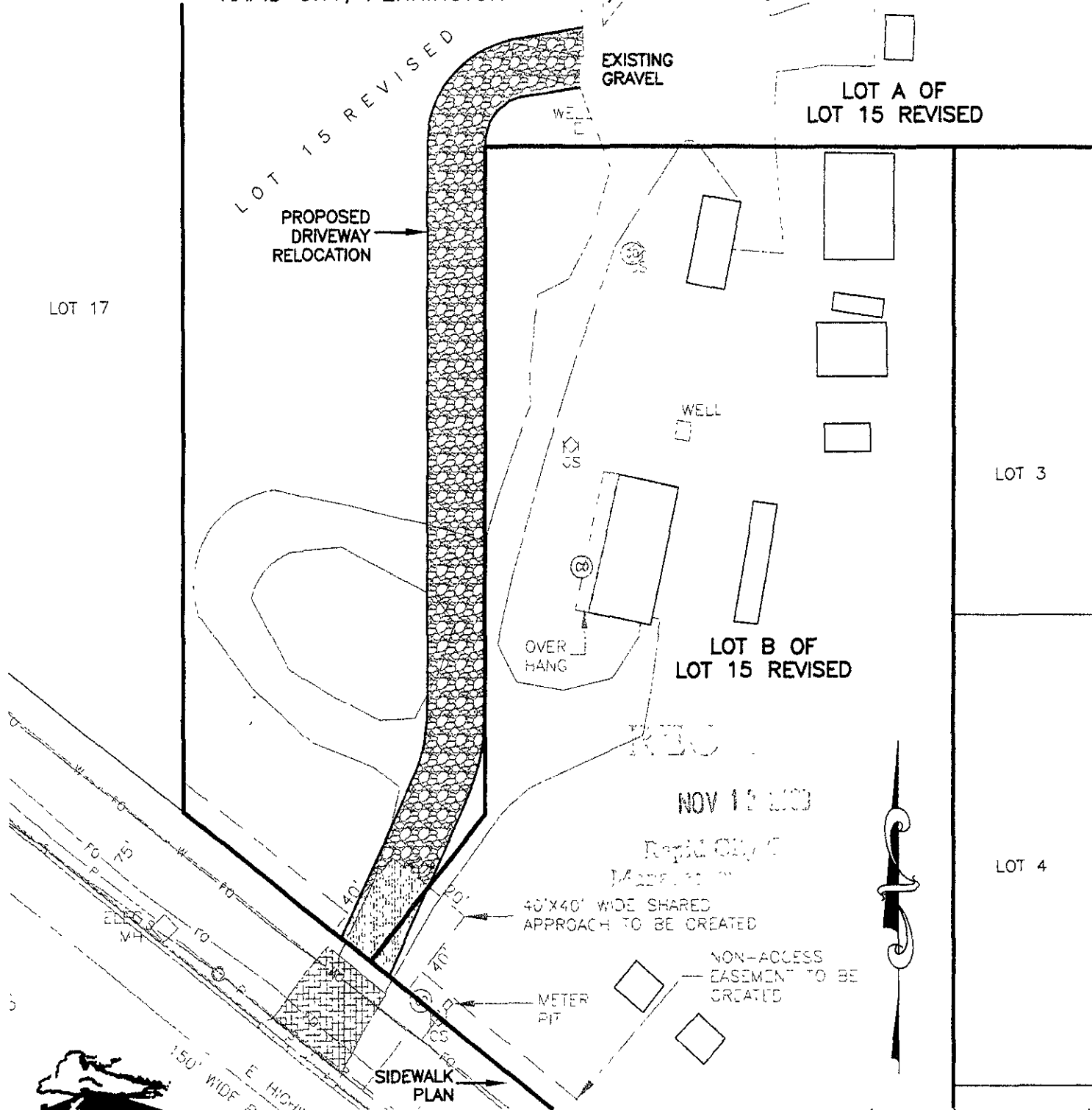


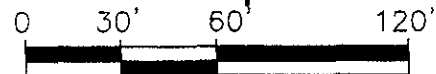
# PROPOSED DRIVEWAY RELOCATION LOTS A AND B OF LOT 15 REVISED OF HILLS VIEW SUBDIVISION

LOCATED IN THE NE1/4 OF THE SE1/4, AND IN THE SE1/4 OF THE NE1/4 OF  
SECTION 5, T1N, R8E, BHM  
RAPID CITY, PENNINGTON COUNTY, SOUTH DAKOTA



## Renner & Associates, LLC.

616 Sixth St. \* Rapid City, SD 57701 \* 605/721-7310  
 FAX: 605/721-7313 \* E-MAIL: Gary@RennerAssoc.com  
 \* Spearfish 605/717-0016 \*



SCALE: 1" = 60'