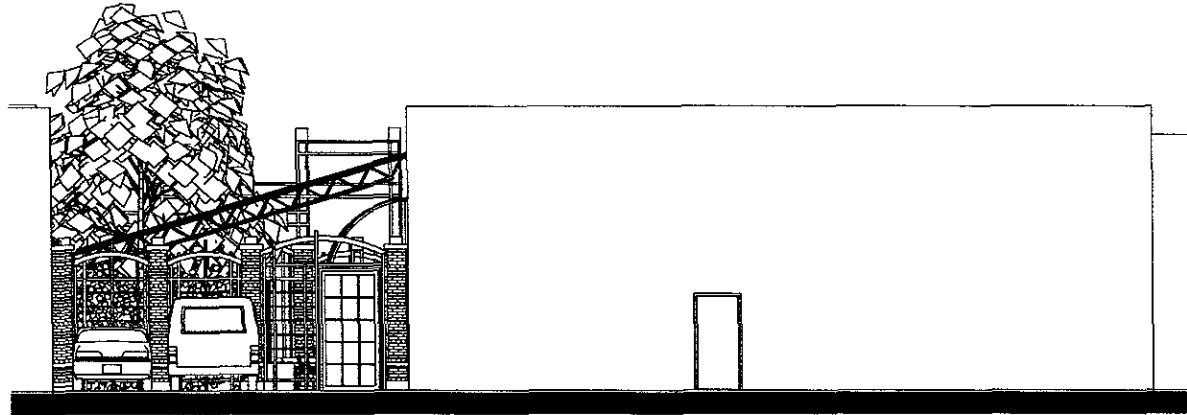
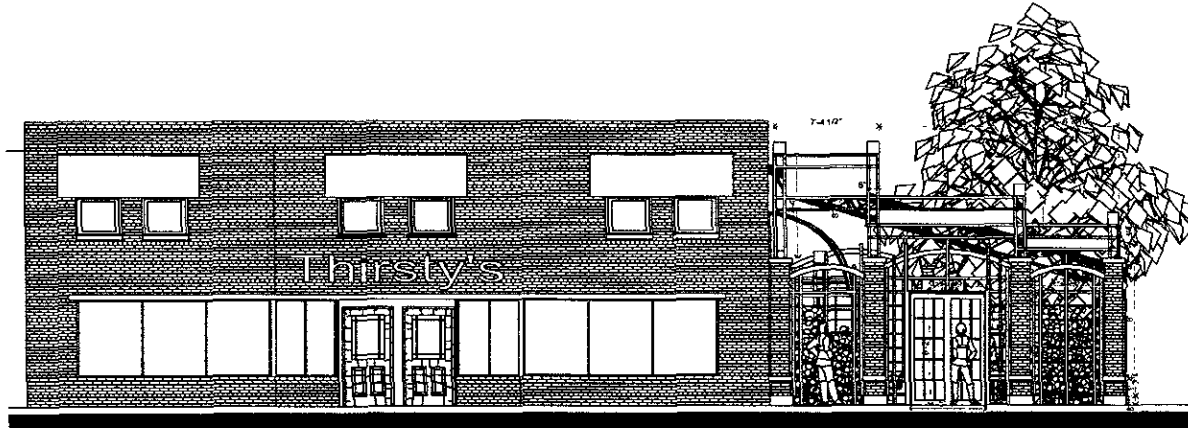


10UR006



2 SOUTH ELEVATION 1/4" = 1'-0"



1 NORTH ELEVATION 1/4" = 1'-0"

A-201

Sheet Number

09 011

Project Number

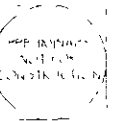
THIRSTY'S  
OUTDOOR GARDEN DINING  
Solution #2

1/29/2010

RAPID CITY SOUTH DAKOTA

Drawn By: [Signature]

Checked By: [Signature]



*baffuto*  
Baffuto Architecture  
Architects  
1000 E. 10th St., Suite 100  
Rapid City, SD 57701  
605.343.1111



DATE OF REVISION: [Blank]  
BY: [Blank]  
REASON: [Blank]

RECEIVED

FEB 25 2010

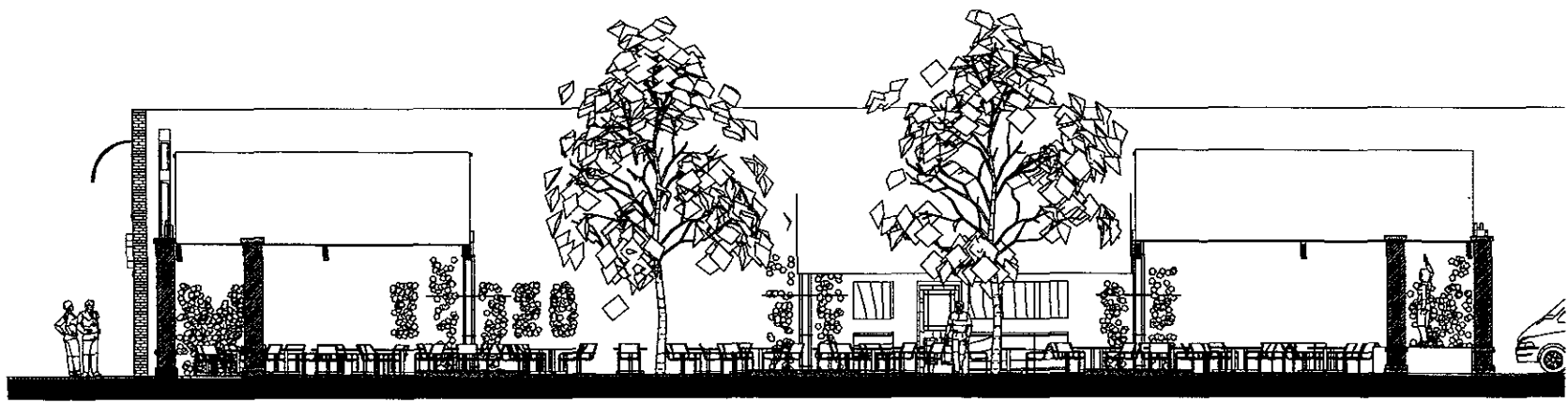
Rapid City Growth  
Management Department

# Rapid City Growth Management Department

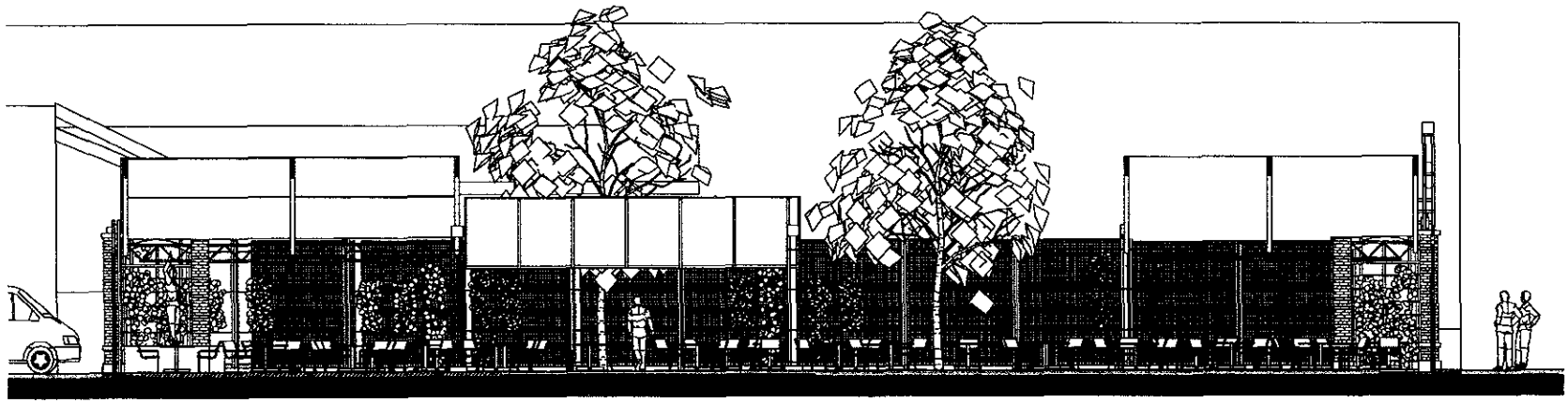
**THIRSTY'S**  
**OUTDOOR GARDEN DINING**  
**Solution #2**

1/29/2010

RAPID CITY SOUTH DAKOTA



1 WEST ELEVATION 1/4" = 1'-0"



02 EAST ELEVATION 1/4" = 1'-0"



*baffuto* Architecture

1215 W. 10th St. Rapid City, SD 57701  
 605.343.1111  
 www.baffuto.com



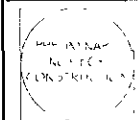
Rapid City Growth Management Department

THIRSTY'S  
OUTDOOR GARDEN DINING  
Solution #2

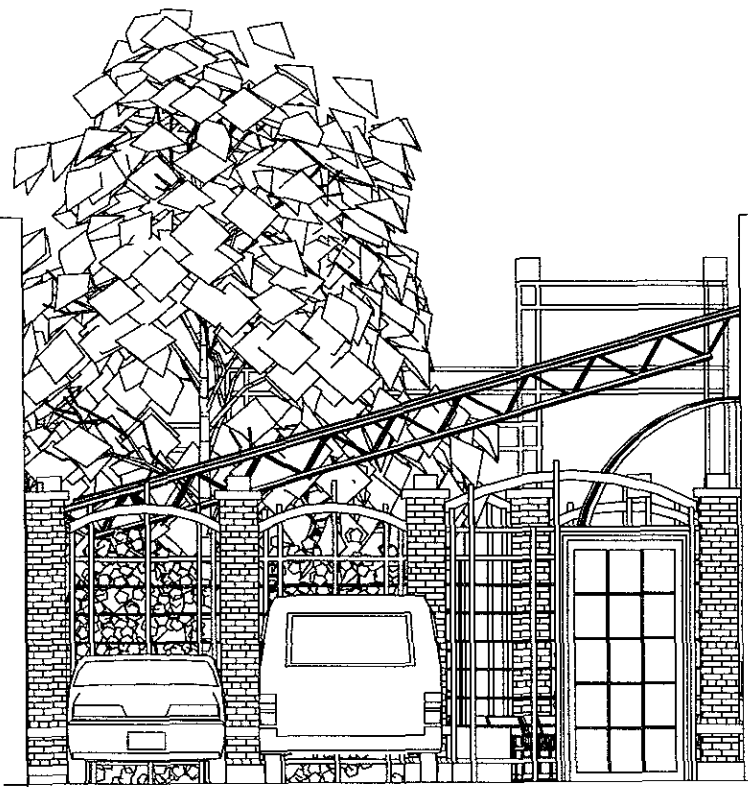
1/29/2010

RAPID CITY SOUTH DAKOTA

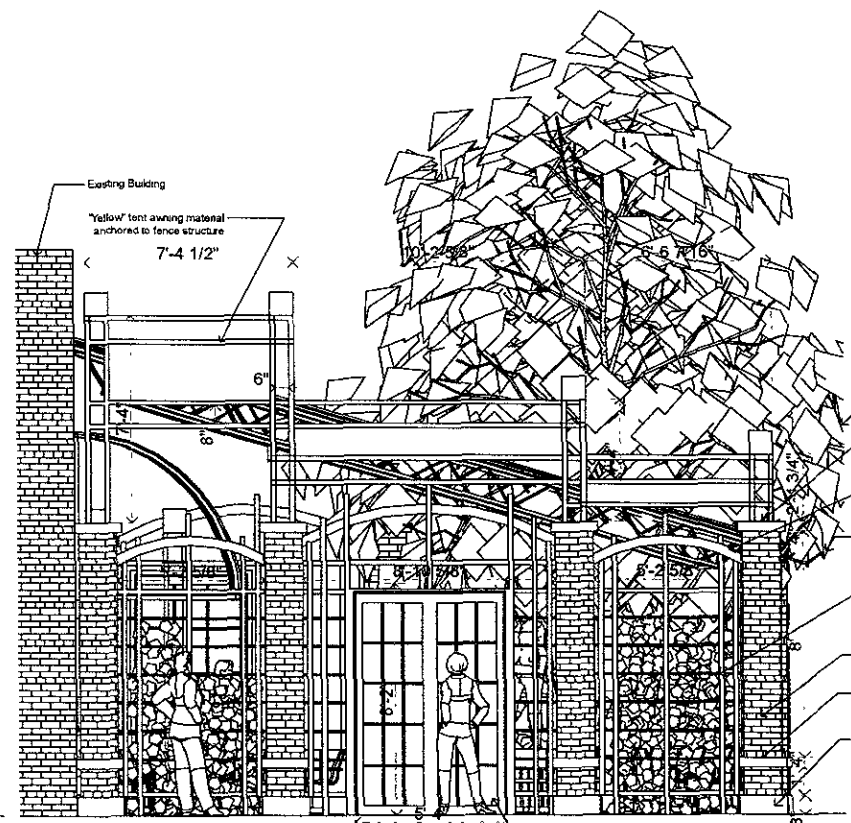
Drawn by: TB  
Checked by: TE



*baffuto* ARCHITECTURE  
1000 14th St. S. Suite 100  
Rapid City, SD 57701  
605.343.8888  
www.baffuto.com



2 SOUTH ELEVATION  
A-203 SCALE: 1/2" = 1'-0"



1 NORTH ELEVATION  
A-203 SCALE: 1/2" = 1'-0"

- 2" Tubular steel powder coat black fence
- 1/8"x1/8" Square steel plate powder coat black anchored to column
- 3"x2" Tubular steel powder coat black fence top arch rail
- 4"x1-5/8"x1-5/8" Precast column cap
- 3/4" solid bar steel powder coat black fence
- 4" Brick veneer around 8" sq half CMU core
- 4" Precast column wrap
- 8"x1-5/8"x1-5/8" Precast column base

Steel powder coat gate with steel (solid bar) grille

Existing Building  
"Yellow" tent awning material anchored to fence structure  
7'-4 1/2"

6"  
6"

3"x2"

4"

8"

6"

10UR006



A-901  
Sheet Number

08 011  
Project Number

**THIRSTY'S**  
**OUTDOOR GARDEN DINING**  
Solution #2

ARCHITECT: SOUTHDAKOTA

DATE: 02/05/2010

REVISIONS

*baffuto*

ARCHITECTS

1000 S. DAKOTA

SIEMING, SOUTH DAKOTA

605.338.1111

WWW.BAFFUTOARCHITECTS.COM

FEB 25 2010

Rapid City Growth  
Management Department