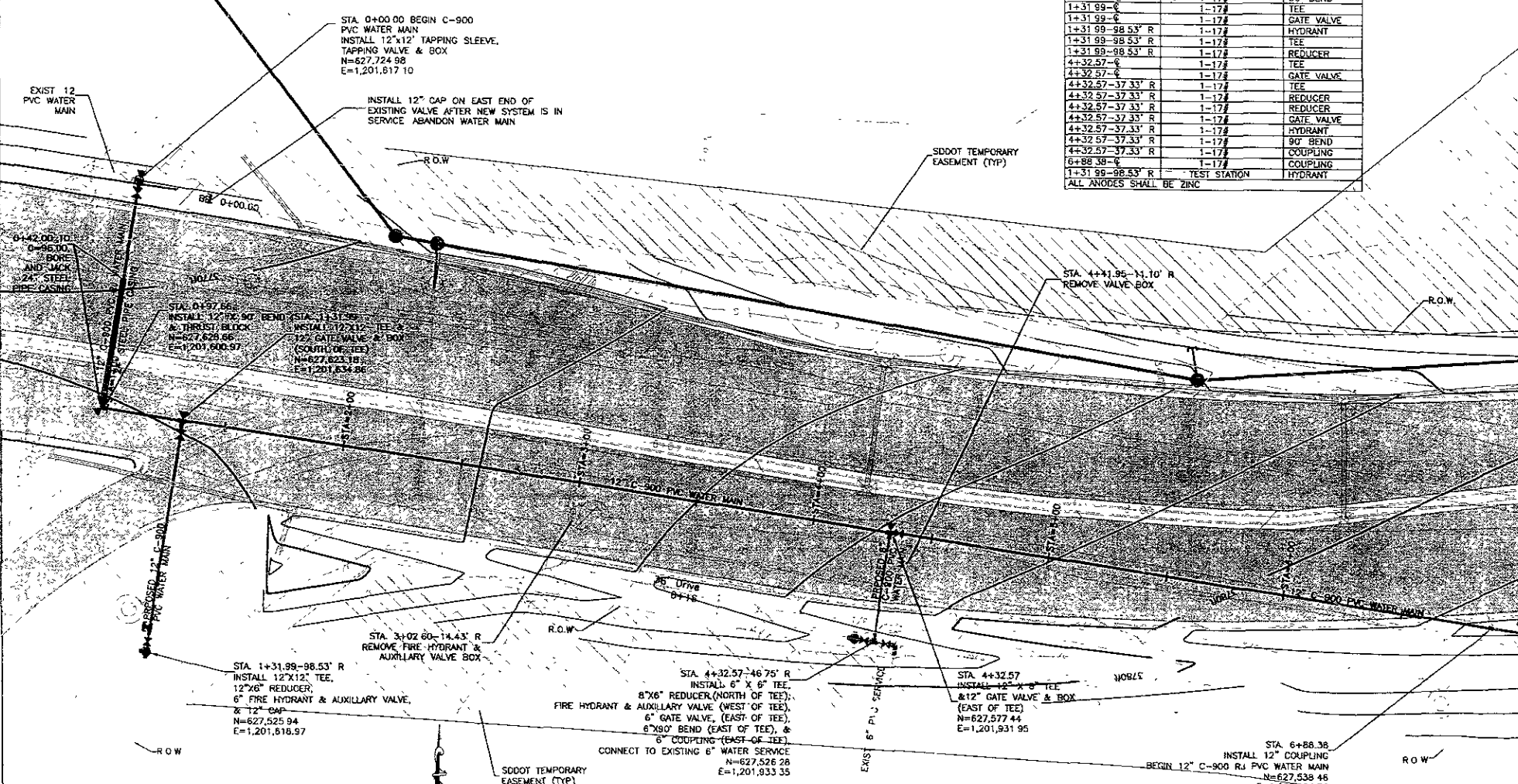


ANODE SCHEDULE		
STATION & OFFSET	NUMBER & SIZE OF BAG	FITTING
0+00.00-C	1-17#	TAPPING VALVE
0+42.00-C	6-17#	END OF CASING
0+96.00-C	6-17#	END OF CASING
0+97.66-C	1-17#	90° BEND
1+31.99-C	1-17#	TEE
1+31.99-C	1-17#	GATE VALVE
1+31.99-98.53' R	1-17#	HYDRANT
1+31.99-98.53' R	1-17#	TEE
1+31.99-98.53' R	1-17#	REDUCER
4+32.57-C	1-17#	TEE
4+32.57-C	1-17#	GATE VALVE
4+32.57-37.33' R	1-17#	TEE
4+32.57-37.33' R	1-12#	REDUCER
4+32.57-37.33' R	1-17#	REDUCER
4+32.57-37.33' R	1-17#	GATE VALVE
4+32.57-37.33' R	1-17#	HYDRANT
4+32.57-37.33' R	1-17#	90° BEND
4+32.57-37.33' R	1-17#	COUPLING
6+88.38-C	1-17#	COUPLING
1+31.99-98.53' R	TEST STATION	HYDRANT

ALL ANODES SHALL BE ZINC



STA. 0+00.00 BEGIN C-900
PVC WATER MAIN
INSTALL 12"x12" TAPPING SLEEVE,
TAPPING VALVE & BOX
N=627,724.98
E=1,201,817.10

INSTALL 12" CAP ON EAST END OF
EXISTING VALVE AFTER NEW SYSTEM IS IN
SERVICE ABANDON WATER MAIN

EXIST 12
PVC WATER
MAIN

SDDOT TEMPORARY
EASEMENT (TYP)

0+42.00 TO
0+96.00
BORE
AND JACK
AND 24"
STEEL
BONE CASING

STA. 0+97.66
INSTALL 12" X 90° BEND
& TRUST BLOCK
N=627,628.66
E=1,201,900.97

STA. 1+31.99
INSTALL 12" X 12" TEE &
12" GATE VALVE & BOX
(SOUTH OF TEE)
N=627,623.18
E=1,201,834.86

STA. 4+31.95-11.10' R
REMOVE VALVE BOX

EXIST 6" PVC SERVICE
PVC WATER MAIN
C-900

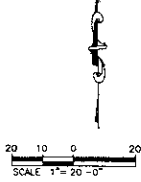
STA. 3+02.60-14.43' R
REMOVE FIRE HYDRANT &
AUXILIARY VALVE BOX

STA. 1+31.99-98.53' R
INSTALL 12" X 12" TEE,
12" X 6" REDUCER,
6" FIRE HYDRANT & AUXILIARY VALVE,
& 12" CAP
N=627,525.94
E=1,201,818.97

STA. 4+32.57-46.75' R
INSTALL 6" X 6" TEE,
8" X 6" REDUCER (NORTH OF TEE),
FIRE HYDRANT & AUXILIARY VALVE (WEST OF TEE),
6" GATE VALVE (EAST OF TEE),
& 6" X 6" BEND (EAST OF TEE), &
6" COUPLING (EAST OF TEE).
CONNECT TO EXISTING 6" WATER SERVICE
N=627,526.28
E=1,201,833.35

STA. 4+32.57
INSTALL 16" X 8" TEE
& 12" GATE VALVE & BOX
(EAST OF TEE)
N=627,577.44
E=1,201,931.95

STA. 6+88.38
INSTALL 12" COUPLING
BEGIN 12" C-900 R/C PVC WATER MAIN
N=627,538.46
E=1,202,164.72




Prepared by:



TSP, Inc.
500 Kansas City St.
Rapid City, SD 57701
phone (605) 943-6162
fax (605) 943-7159
www.tspinc.com

To Solve To Excel Together

Prepared For:



Public Works Department
Engineering Services

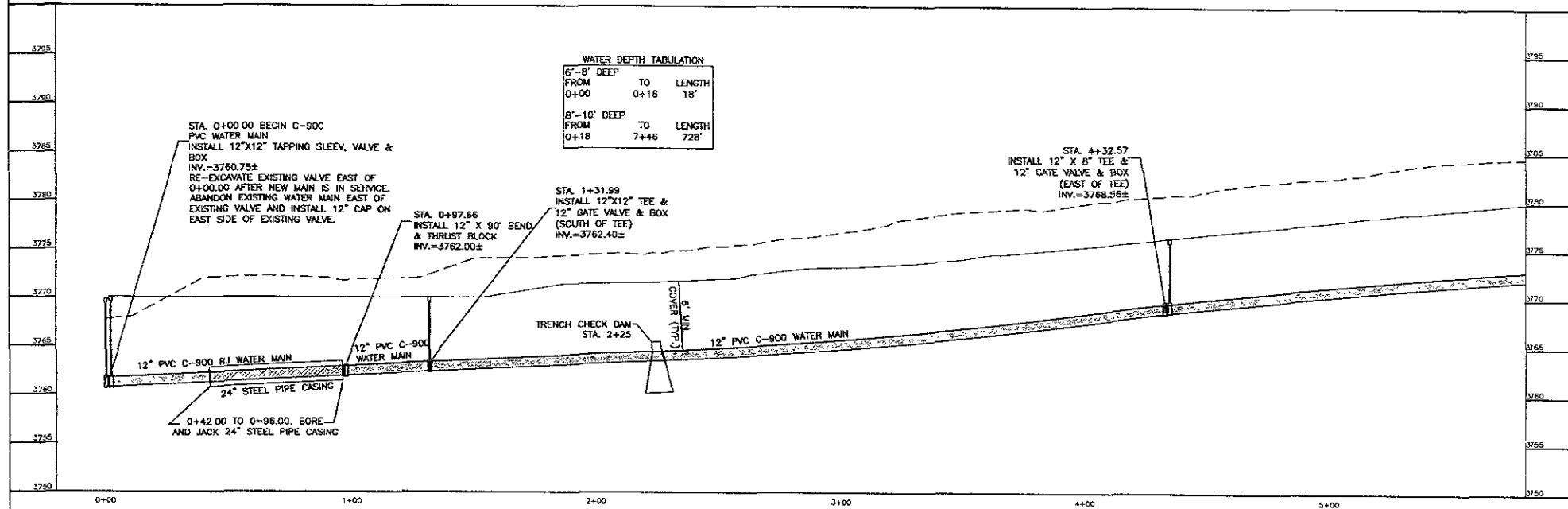
Scale: AS SHOWN

Design and by: SCW
Drawn by: GNC
Design Date: 11/09
Print Date: 12/02/09
Project No: 02990704
Surveyed by: SDDOT
SDDOT Project No: RH 2018(17)54

CATRON BOULEVARD RECONSTRUCTION
UTILITY RELOCATION AND MODIFICATION

Sheet Title: WATER PLAN
Sheet No: 20
of
46

SSW09-1619



WATER DEPTH TABULATION

6'-8" DEEP		
FROM	TO	LENGTH
0+00	0+18	18'
8'-10" DEEP		
FROM	TO	LENGTH
0+18	7+46	728'

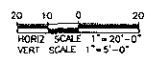
STA. 0+00.00 BEGIN C-900 PVC WATER MAIN
 INSTALL 12"x12" TAPPING SLEEVE, VALVE & BOX
 INV.=3760.75±
 RE-EXCAVATE EXISTING VALVE EAST OF 0+00.00 AFTER NEW MAIN IS IN SERVICE. ABANDON EXISTING WATER MAIN EAST OF EXISTING VALVE AND INSTALL 12" CAP ON EAST SIDE OF EXISTING VALVE.

STA. 0+97.66
 INSTALL 12" X 90" BEND & THRUST BLOCK
 INV.=3762.00±

STA. 1+31.99
 INSTALL 12"x12" TEE & 12" GATE VALVE & BOX (SOUTH OF TEE)
 INV.=3762.40±


STA. 4+32.57
 INSTALL 12" X 8" TEE & 12" GATE VALVE & BOX (EAST OF TEE)
 INV.=3768.56±

0+42.00 TO 0+98.00, BORE AND JACK 24" STEEL PIPE CASING



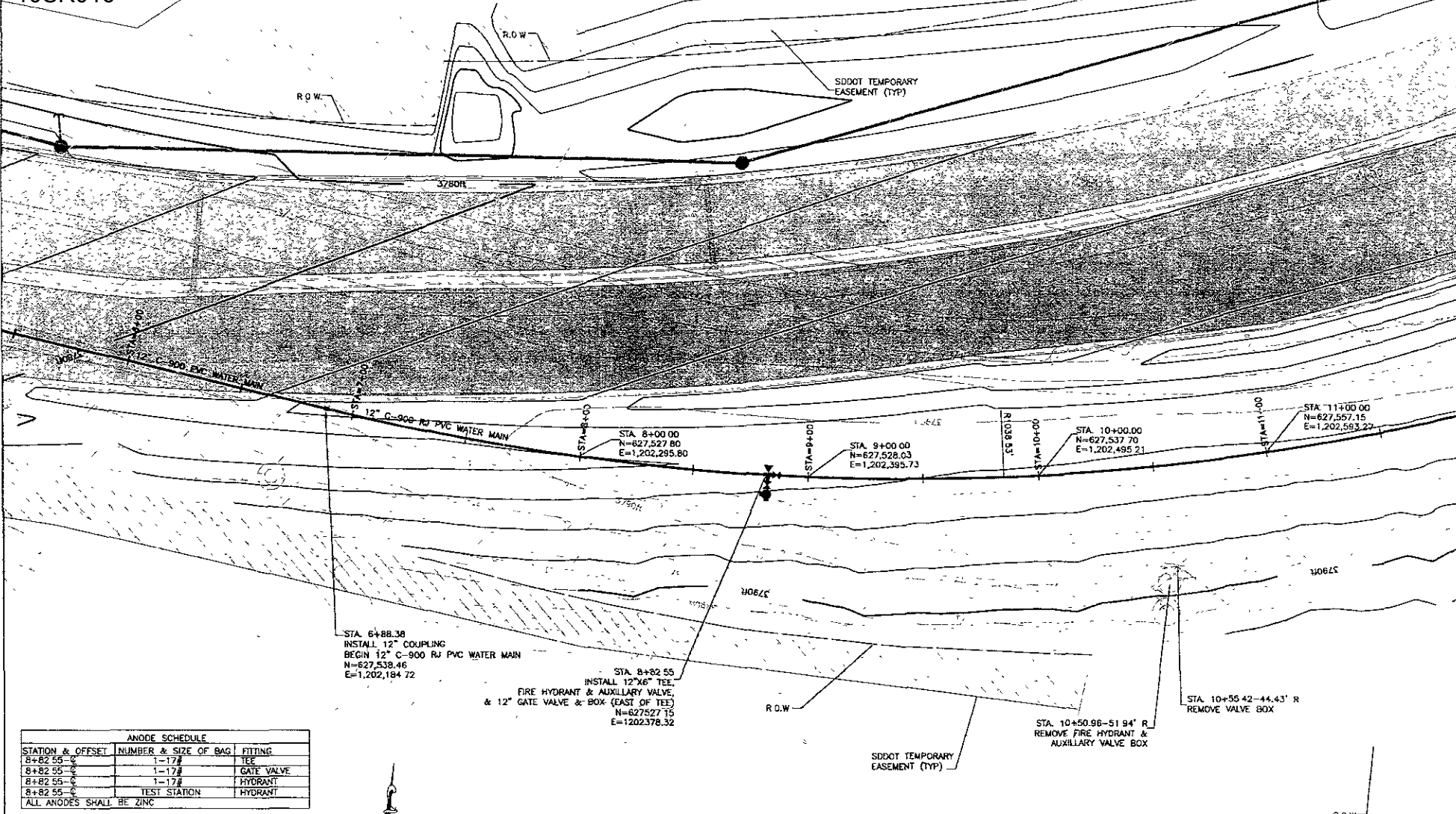
Prepared By

 TSP, Inc.
 600 Kansas City St.
 Rapid City, SD 57701
 phone (605) 343-6102
 fax (605) 343-7159
 www.tspinc.com

Prepared For

 Public Works Department
 Engineering Services

Scale AS SHOWN	
Designed By DCW	Drawn By DKS
Checked Date 11/08	Field Date 12/02/09
Internal Job No. 03090704	Survey Date
Reviewed By S30007	
33007 Project No. NH 2015(17) 64	

CATRON BOULEVARD RECONSTRUCTION UTILITY RELOCATION AND MODIFICATION	Sheet No.	21
	Drawn	
	Water Profile	21
	STA 0+00 to 5+00	of
		46



STA. 6+88.38
 INSTALL 12" COUPLING
 BEGIN 12" C-900 RJ PVC WATER MAIN
 N=627,538.46
 E=1,202,184.72

STA. 8+82.55
 INSTALL 12"x6" TEE,
 FIRE HYDRANT & AUXILIARY VALVE
 & 12" GATE VALVE & BOX (EAST OF TEE)
 N=627527.15
 E=1202378.32

STA. 8+00.00
 N=627,527.80
 E=1,202,295.80

STA. 9+00.00
 N=627,528.03
 E=1,202,395.73

STA. 10+00.00
 N=627,537.70
 E=1,202,495.21

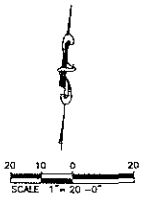
STA. 11+00.00
 N=627,557.15
 E=1,202,593.27

STA. 10+50.96-51.94' R
 REMOVE FIRE HYDRANT &
 AUXILIARY VALVE BOX

STA. 10+55.42-44.43' R
 REMOVE VALVE BOX

ANODE SCHEDULE		
STATION & OFFSET	NUMBER & SIZE OF BAG	FITTING
8+82.55-C	1-17#	TEE
8+82.55-C	1-17#	GATE VALVE
8+82.55-C	1-17#	HYDRANT
8+82.55-C		TEST STATION

ALL ANODES SHALL BE ZINC



Prepared By

 TSP, Inc.
 600 Kansas City St.
 Rapid City SD 57701
 phone (605) 343-8102
 fax (605) 343-7156
 www.sps@tsp.com

Prepared For

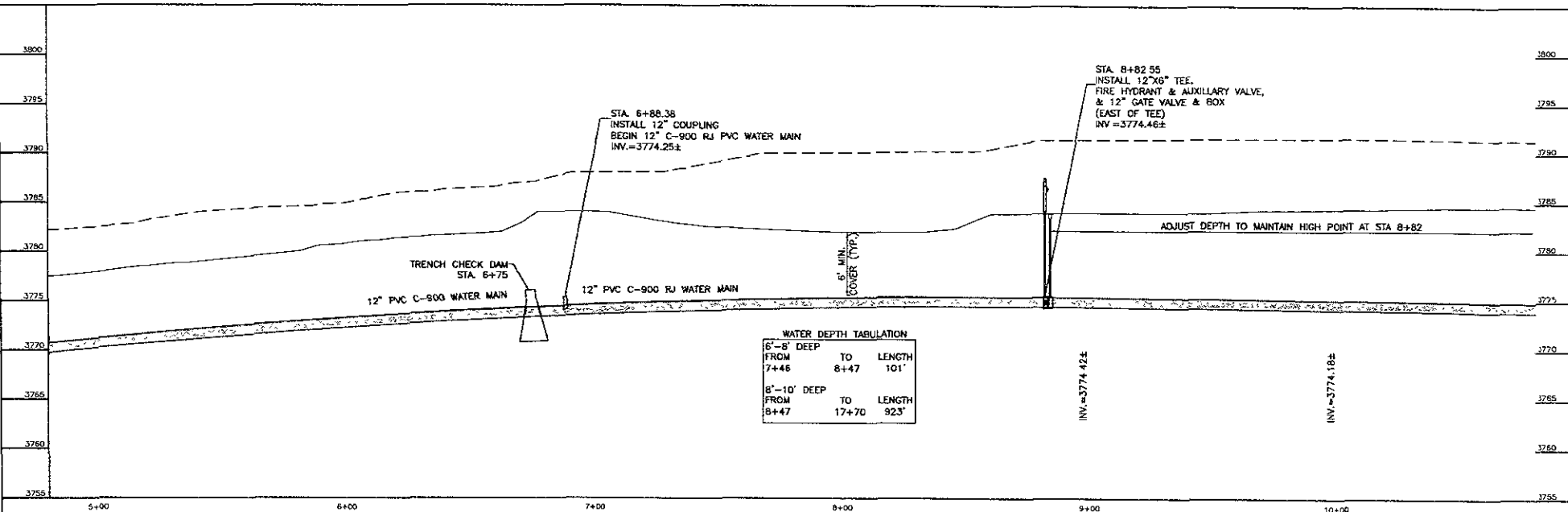
 Public Works Department
 44444
 Engineering Services

Scale: AS SHOWN

Designed By DCHW	Drawn By DMS
Design Date 11/05	Print Date 12/6/2009
Revised with No. 03090701	Survey Date
Submitted By SDDOT	
SDDOT Project No. NH 2010(17)64	

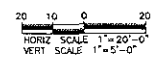
CATRON BOULEVARD RECONSTRUCTION
 UTILITY RELOCATION AND MODIFICATION

Sheet Title WATER PLAN	Sheet No. 22
Stationing STA 5+00 to 10+00	of 46

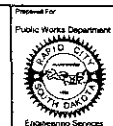


WATER DEPTH TABULATION

6'-8" DEEP		
FROM	TO	LENGTH
7+46	8+47	101'
6'-10" DEEP		
FROM	TO	LENGTH
8+47	17+70	923'



Prepared By: **TSP Inc.**
 600 Kansas City St.
 Rapid City, SD 57101
 phone: (605) 343-6102
 fax: (605) 343-7159
 www.tspinc.com



Project For: **Public Works Department**

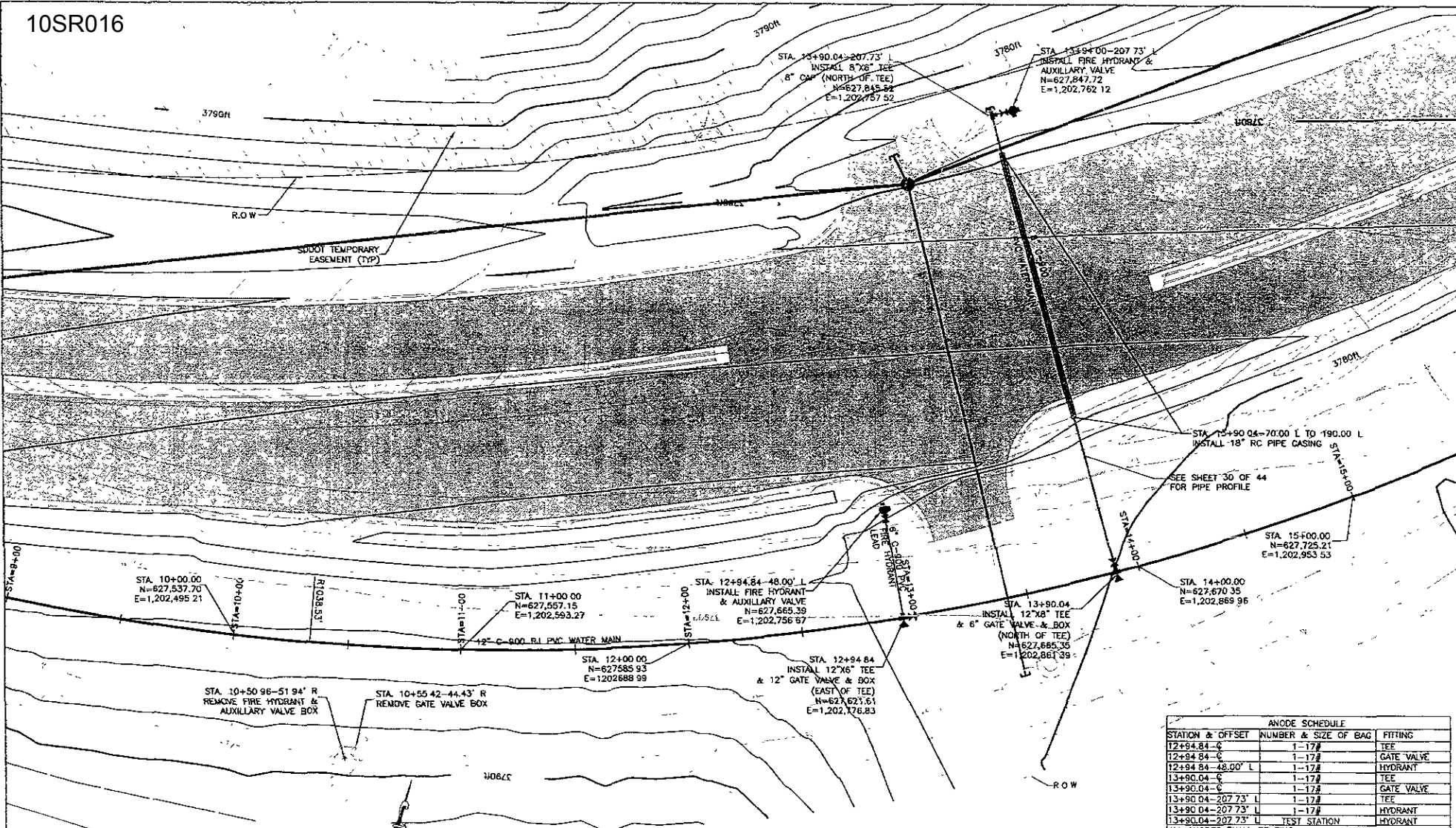
Scale: **AS SHOWN**

Designed By: **DCW**
 Drawn By: **DMS**
 Design Date: **11/03**
 Print Date: **12/03/09**
 Internal Job No.: **03090704**
 Estimated By: **SSD01**
 Survey Date: _____
 SSD01 Project No. **NR 2010(L) 54**

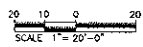
**CATRON BOULEVARD RECONSTRUCTION
 UTILITY RELOCATION AND MODIFICATION**


Sheet Title: **WATER PROFILE**
 STA 5+00 to 10+00

Sheet No.: **23**
 of **46**



ANODE SCHEDULE			
STATION & OFFSET	NUMBER & SIZE OF BAG	FITTING	
12+94.84-C	1-17#	TEE	
12+94.84-C	1-17#	GATE VALVE	
12+94.84-48.00' L	1-17#	HYDRANT	
13+90.04-C	1-17#	TEE	
13+90.04-C	1-17#	GATE VALVE	
13+90.04-207.73' L	1-17#	TEE	
13+90.04-207.73' L	1-17#	HYDRANT	
13+90.04-207.73' L	1-17#	TEST STATION	
ALL ANODES SHALL BE ZINC			



Prepared by

 TSP, Inc.
 1800 Kananda City St.
 Rapid City, SD 57701
 phone (605) 343-6102
 fax (605) 343-7159
 www.teamtsp.com

Prepared for

 Public Works Department
 Engineering Services

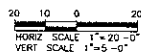
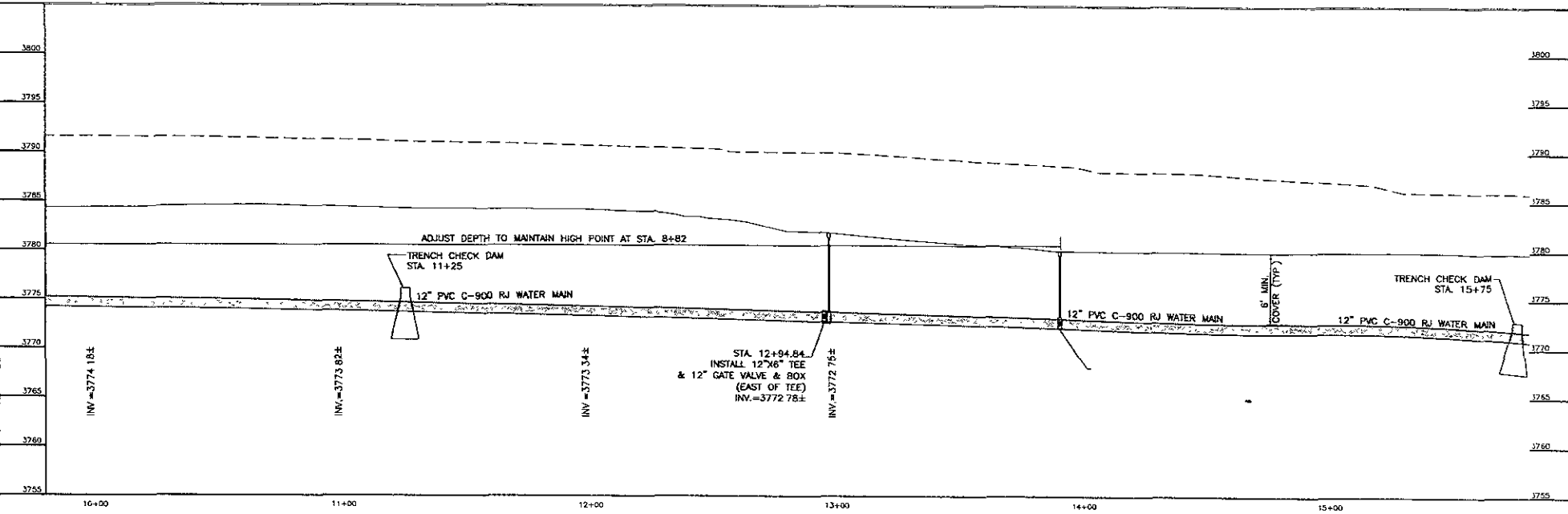
Scale AS SHOWN
 Drawn By
 DCW
 Design Date
 11/09
 Project Date
 12/02/09
 Internal Job No.
 030900724
 Surveyed By
 SDDG1
 ESDOT Project No.
 NH 2016171-04
 Survey Date



CATRON BOULEVARD RECONSTRUCTION
 UTILITY RELOCATION AND MODIFICATION

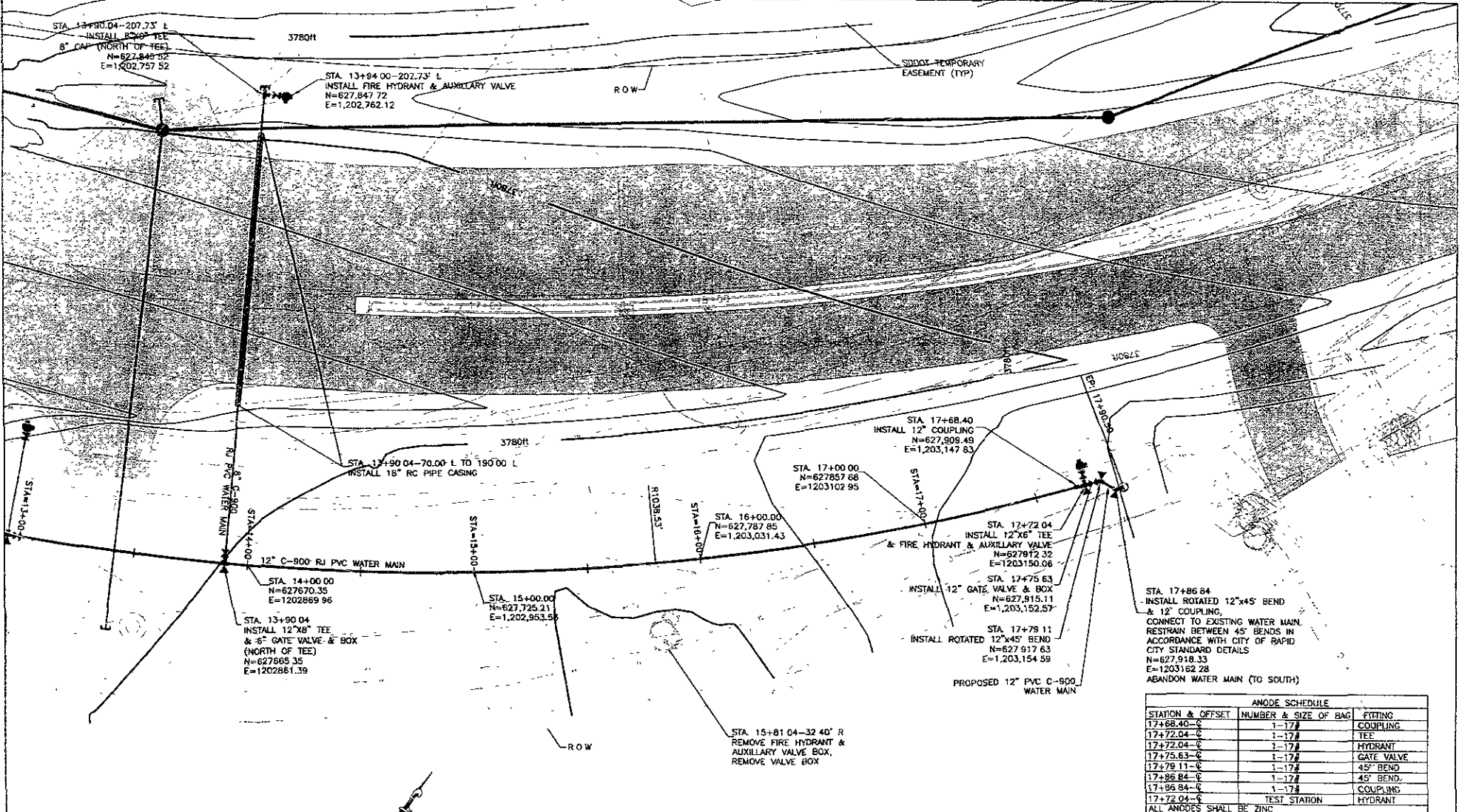
Sheet No. **24**
 of
46

Water Plan
 STA 10+00 to 15+00

Sheet Title



Prepared By  TSP Inc. 800 Kansas City St. Rapid City, SD 57701 phone: (605) 343-6102 fax: (605) 343-7158 www.teamtsp.com	Prepared For  Public Works Department	Scale: AS SHOWN	Sheet Title CATRON BOULEVARD RECONSTRUCTION UTILITY RELOCATION AND MODIFICATION	Sheet No. WATER PROFILE STA 10+00 to 15+00 of 46
		Designed By: DCM Design Date: 11/09 Internal Job No: 03090704 Drawn By: SIDDY SDDOT Project No: 1012016(17) 04 SHEET 1819		



ANODE SCHEDULE		
STATION & OFFSET	NUMBER & SIZE OF BAG	FITTING
17+68.40-C	1-17#	COUPLING
17+72.04-C	1-17#	TEE
17+72.04-C	1-17#	HYDRANT
17+75.63-C	1-17#	GATE VALVE
17+79.11-C	1-17#	45° BEND
17+86.84-C	1-17#	45° BEND
17+86.84-C	1-17#	COUPLING
17+72.04-C		TEST STATION
ALL ANODES SHALL BE ZINC		



Prepared By: **TSP, Inc.**
 600 Kansas City St.
 Rapid City, SD 57701
 phone (605) 343-6162
 fax (605) 343-7159
 www.teamsp.com

Prepared For: **Public Works Department**

 Engineering Services

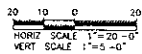
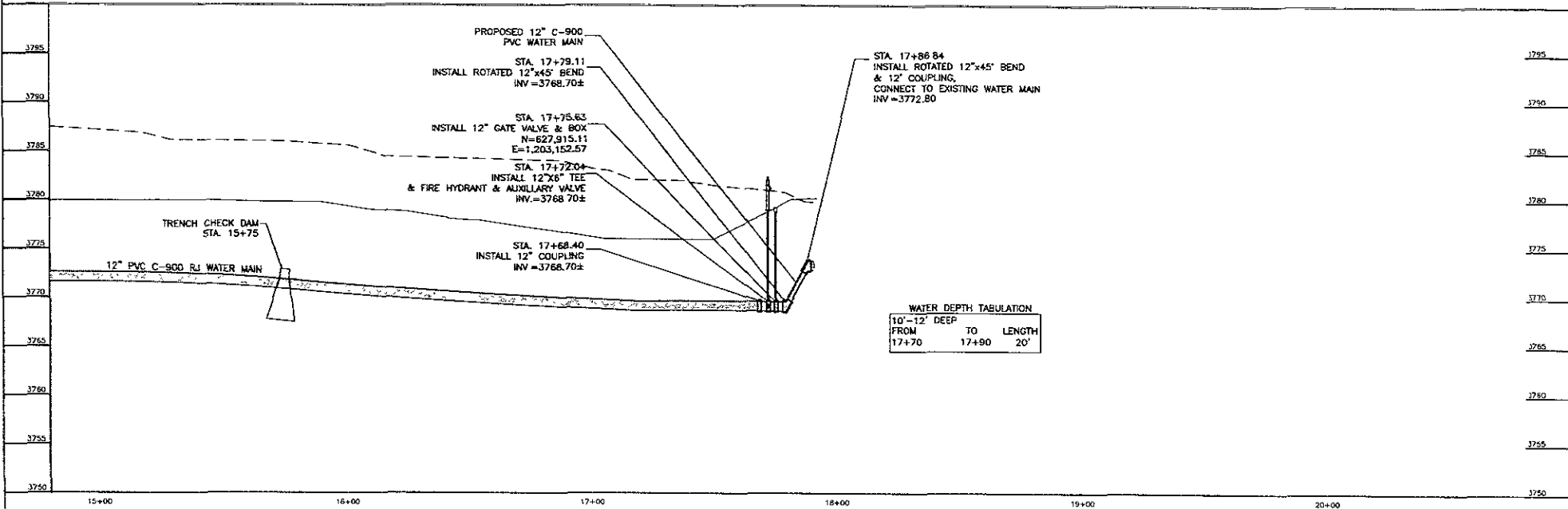
Scale: **AS SHOWN**
 Designed By: **DCW** Drawn By: **DNS**
 Design Date: **11/09** Print Date: **12/02/09**
 Internal Job No.: **02090704**
 Checked By: **SDOCT** Survey Date:
 SDOCT Project No.: **0412018(17)14**

**CATRON BOULEVARD RECONSTRUCTION
 UTILITY RELOCATION AND MODIFICATION**

Sheet: **26**
 of: **46**

Project Title: **WATER PLAN**
 Stationing: **STA 15+00 to EOP**

Sheet No.: **SSW06-1819**



Prepared By:



TSP, Inc.
800 Kansas City St.
Rapid City, SD 57701
phone: (605) 343-6102
fax: (605) 343-7159
www.tspinc.com

Prepared For:



Public Works Department
Engineering Services

Scale: AS SHOWN

Designed By DCW	Drawn By DNS
Design Date 11/09	Print Date 12/02/09
Project Job No. 03030704	Survey Date
Sheet Project No. NH 2616(17) 04	SSWCR# 819

CATRON BOULEVARD RECONSTRUCTION
UTILITY RELOCATION AND MODIFICATION

Sheet Title

WATER PROFILE
STA 15+00 to EOP

Sheet No. **27**
of
46