

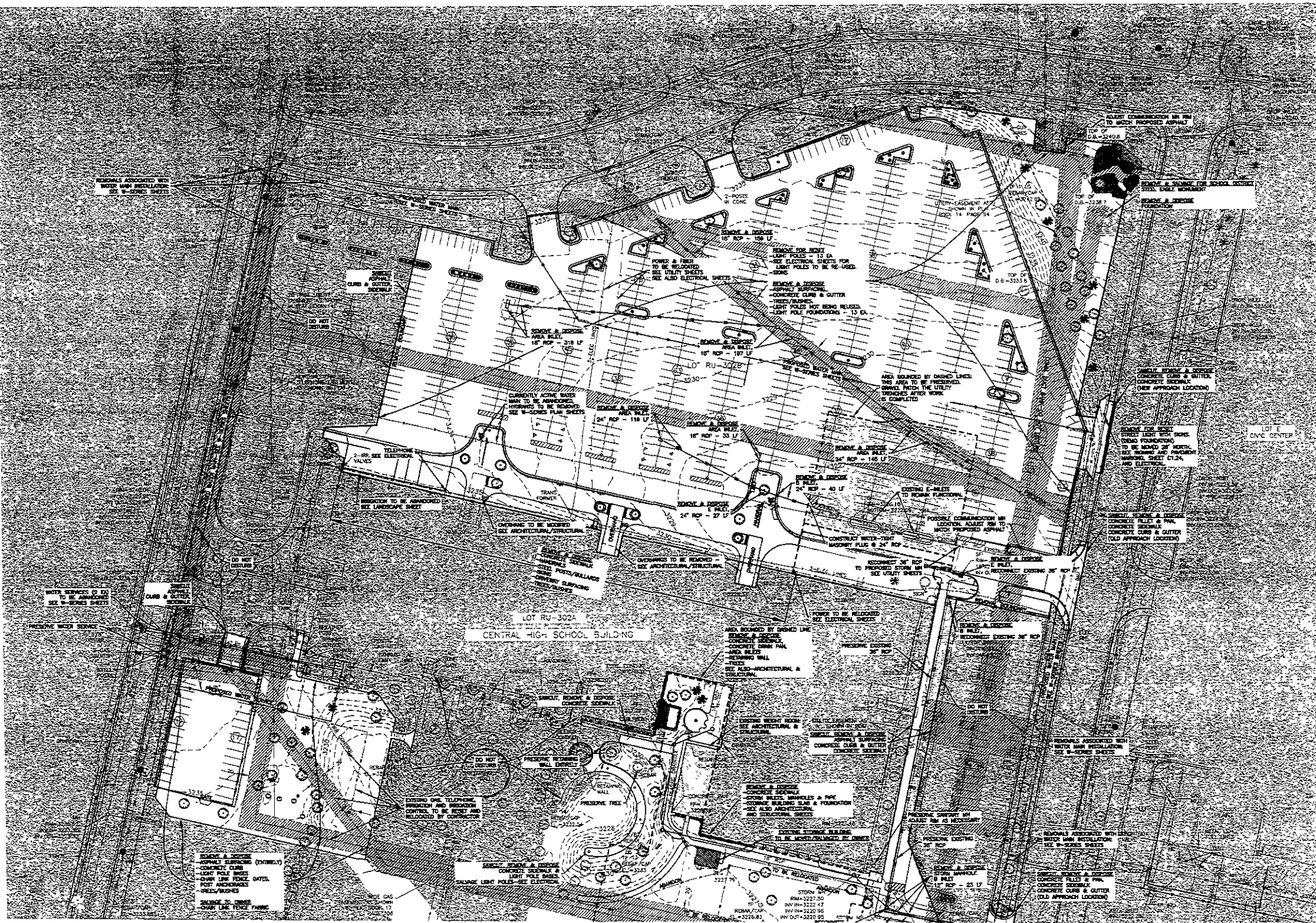
0 25' 50' 100'  
 SCALE: 1" = 50'  
 CONTOUR INTERVAL = 1'

10SR015

Prepared By  
**RENNER & ASSOCIATES, LLC.**  
 610 SOUTH 1ST ST. SIOUX CITY, IA 51101  
 PHONE: 712.252.1100 FAX: 712.252.1101  
 CITY HALL 1902



**UTILITIES**  
 SOUTH DAKOTA CIVIL NOTIFICATION CENTER  
 115 ENGLEWOOD HEIGHTS DRIVE  
 PITTSBURGH, PA 15229  
 1-800-781-7474  
 The locations of existing underground utilities are shown in an approximate way only and have not been independently verified by the owner or its representative. The contractor shall determine the exact location of all existing utilities before commencing work, and agree to be fully responsible for any and all damage which might be occasioned by the contractor's failure to exactly locate and preserve any and all underground utilities.



**LEGEND**

△	CONTROL POINT	—○—○—	CHAIN LINK FENCE
○	MANHOLE	—○—○—	CURB & GUTTER
□	FIRE HYDRANT	—○—○—	WATER LINE
○	WATER VALVE	—○—○—	POWER LINE
○	POWER STOP	—○—○—	OVERHEAD POWER
○	ROOF DRAIN	—○—○—	TELEPHONE LINE
○	POWER POLE	—○—○—	SANITARY SEWER LINE
○	LIGHT POLE	—○—○—	STORM SEWER LINE
○	BUSH	—○—○—	GAS LINE
○	STUMP	—○—○—	CABLE LINE
○	PINE	—○—○—	FREEZE LINE
○	SPIN	—○—○—	
○	MINOR CONTOUR (1')	○	DETECTS FOUND SURVEY MONUMENT
○	MAJOR CONTOUR (5')	○	SHOWS SET 1/4" FROM MARKED 'MONUMENT-ASSOC. 2217'
○	PROPERTY LINE	○	(M) MEASURED THIS SURVEY
○	ASPHALT SURFACE		
○	CONCRETE SURFACE		
○	GRAVEL		
○	LANDSCAPING		

- KEYNOTES**
1. COMPLY WITH MINIMUM EROSION & SEDIMENT CONTROL METHODS SHOWN ON EROSION & SEDIMENT CONTROL PLAN BEFORE BEGINNING REMOVAL WORK. ADDITIONAL EROSION & SEDIMENT CONTROL MEASURES TO BE APPLIED AS NECESSARY DURING THE COURSE OF THE WORK.
  2. LIGHT POLE FOUNDATIONS INDICATED FOR REMOVAL SHALL BE DEMOLISHED AND REMOVED TO 1' 0" OR LOWER BELOW PROPOSED SUBGRADE ELEVATION.
  3. SHADED AREAS ARE NOT TO BE DISTURBED.
  4. FEATURES IN DARK INK ARE TO BE REMOVED.
  5. AREAS BOUNDED BY DASHED LINES SEE ASSOCIATED NOTES.

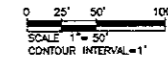
**CENTRAL HIGH SCHOOL  
 RENOVATIONS AND ADDITIONS**  
 RAPID CITY AREA SCHOOL DISTRICT #51-4  
 RAPID CITY, SOUTH DAKOTA

**DEMOLITION PLAN  
 NORTH 1/2**

PROJECT NO. 0814 DRAWING NO.  
 CIVIL #2418  
 DRAFTER: P.M.M.  
 DATE: 2/26/2010  
**C1.4**

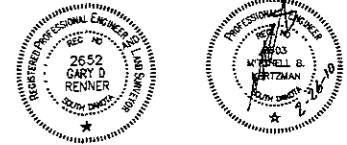
If this drawing is not 30" x 42" it is a reduced print





10SR015

Prepared By  
**RENNER & ASSOCIATES, L.L.C.**  
616 BARTH ST. RAPID CITY, SD 57701  
PHONE 605/721-7310 FAX 605/721-7313  
Bismarck Office 605/711-7016  
CITY HALL 1903



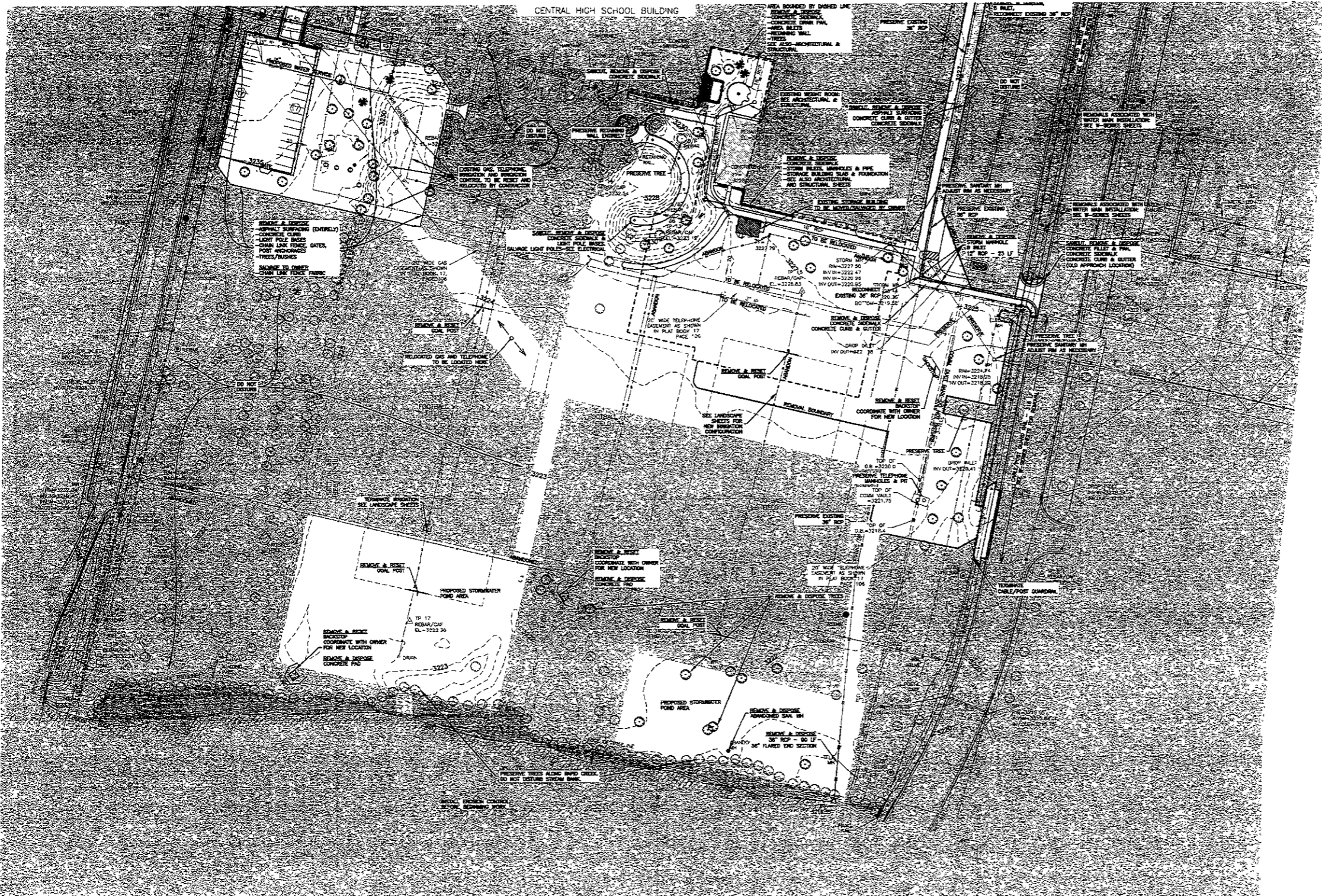
**UTILITIES**  
SOUTH DAKOTA ONE CALL NOTIFICATION CENTER  
115 EVERGREEN HEIGHTS DRIVE  
PITTSBURGH, PA. 15229  
1-800-781-7474  
The locations of existing underground utilities are shown in an approximate way only and have not been independently verified by the engineer or its representative. The contractor shall determine the exact location of all existing utilities before commencing work, and agree to be fully responsible for any and all damages which might be occasioned by the contractor's failure to exactly locate and preserve any and all underground utilities.

**LEGEND**

△	CONTROL POINT	○	DRAIN LINK, FENCE
□	MANHOLE	○	CURB & GUTTER
○	FIRE HYDRANT	—	WATER LINE
○	WATER VALVE	—	POWER LINE
○	CURB STOP	—	OVER HEAD POWER
○	ROOF DRAIN	—	TELEPHONE LINE
○	POWER POLE	—	SANITARY SEWER LINE
○	LIGHT POLE	—	STEEL SEWER LINE
○	BUSH	—	GAS LINE
○	TREE	—	CABLE LINE
○	STUMP	—	FIBER LINE
○	FIRE		
○	DIEN		
○	MINOR CONTOUR (1')	●	DOTS DENOTES FOUND SURVEY MONUMENT
○	MAJOR CONTOUR (5')	⊙	DOTS SET 3/8" REBAR MARKED "TRIMMER-ASSOC. 9217"
—	PROPERTY LINE	(M)	MEASURED THIS SURVEY
—	ASPHALT SURFACE		
—	CONCRETE SURFACE		
—	GRAVEL		
—	LANDSCAPING		

**KEYNOTES**

- NOTES**
1. COMPLY WITH MINIMUM EROSION & SEDIMENT CONTROL METHODS SHOWN ON EROSION & SEDIMENT CONTROL PLAN BEFORE BEGINNING REMOVAL WORK. ADDITIONAL EROSION & SEDIMENT CONTROL MEASURES TO BE APPLIED AS NECESSARY DURING THE COURSE OF THE WORK.
  2. LIGHT POLE FOUNDATIONS INDICATED FOR REMOVAL SHALL BE DEMOLISHED AND REMOVED TO 1'0" OR LOWER BELOW PROPOSED SUBGRADE ELEVATION.
  3. SHADED AREAS ARE NOT TO BE DISTURBED.
  4. FEATURES IN DARK INK ARE TO BE REMOVED.
  5. AREAS BOUNDED BY DASHED LINES SEE ASSOCIATED NOTES.



**CENTRAL HIGH SCHOOL  
RENOVATIONS AND ADDITIONS**  
RAPID CITY AREA SCHOOL DISTRICT #51-4  
RAPID CITY, SOUTH DAKOTA

**DEMOLITION PLAN  
SOUTH 1/2**

PROJECT NO 0814 DRAWING NO  
CIVIL #2416  
DRAFTER PMM  
DATE 2/26/2010

**C1.5**

If this drawing is not 30" x 42" it is a reduced print.