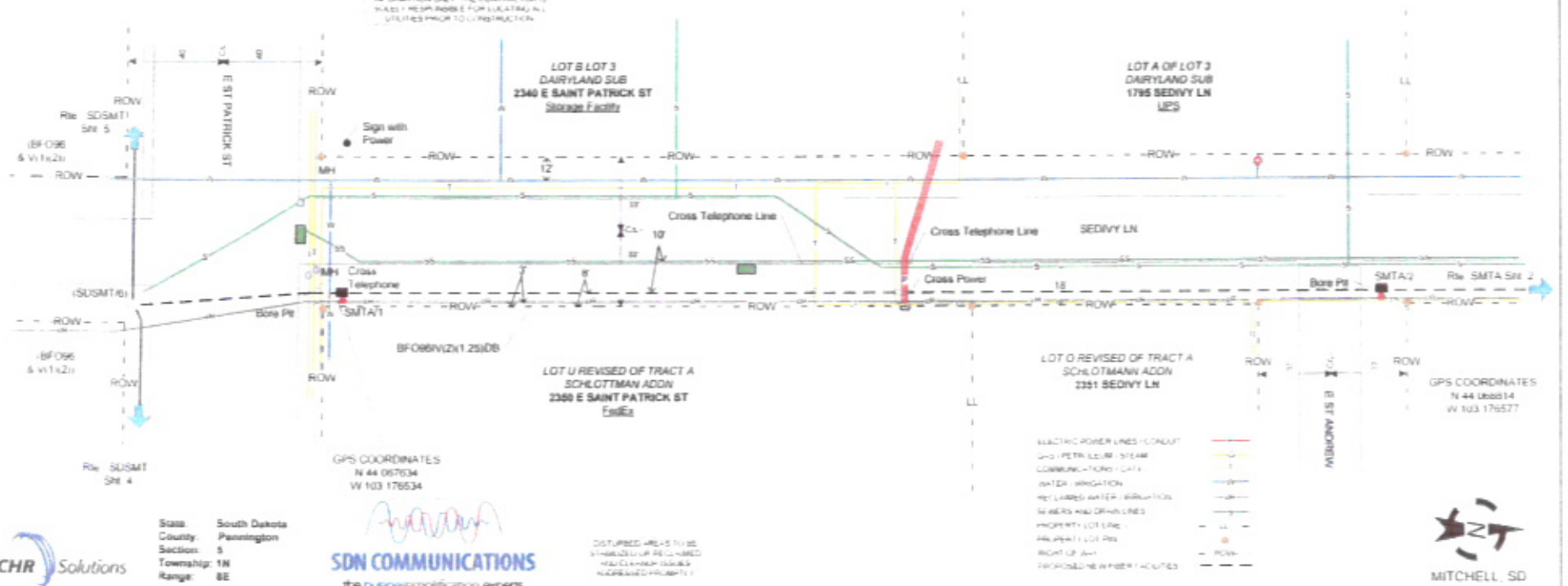
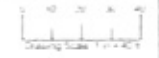


10SR012

10SR012

Sec 5

SD ONE CALL PLANNING LOCATES  
 TRACT # 103 176534  
 DATE 2/28/10  
 LOCATES ON THIS STAKING SHEET ARE FOR  
 INFORMATION ONLY. THE CONTRACTOR IS  
 WAIVED RESPONSIBLE FOR LOCATING ALL  
 UTILITIES PRIOR TO CONSTRUCTION.



State: South Dakota  
 County: Pennington  
 Section: 5  
 Township: 1N  
 Range: 8E



DISTURBED AREAS TO BE  
 REVEALED UP TO 10% OF  
 TOTAL DISTURBED AREA  
 MAINTAINED PERMITS

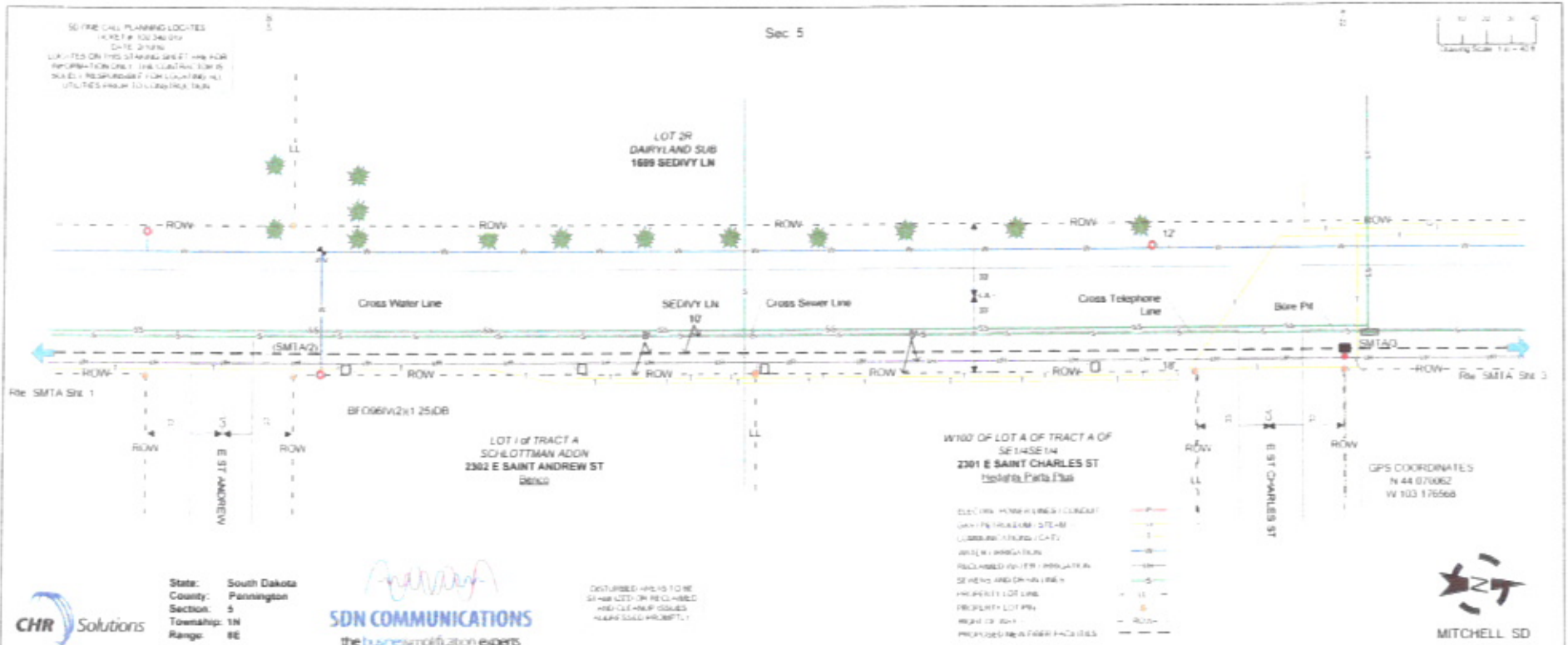


From	To	Cable / Conduit Type, Size, Suffix	QTY	From Sequential	To Sequential	Reel Number	Misc Unit	QTY	Misc Unit	QTY	Remarks	As Staked Fiber Facilities	
SDSMT/6	SDSMT/6	BFO96	100				E(BHF(30x48x36)T)	(1)	HBFO(96)(96)(96)	1	100' TAIL	WO	200.81
							WBHF	1				Exchange	Rapid City
												Route	SMTA
SDSMT/6	SMTA/1	BFO96V(2)(1 25)DB	100				BHF(30x48x36)T	1	BM55A	1	200' COIL	ROW	Public
SMTA/1	SMTA/1	BFO96	200									Staked By	JPP
												Date	Feb-10
												Plowed By	
												Date	
												As Built By	
												Date	
SMTA/1	SMTA/2	BFO96V(2)(1 25)DB	430				BHF(30x48x36)T	1	BM55A	1	200' COIL	Rev By	
SMTA/2	SMTA/2	BFO96	200									Date	
												Project	200.81
												Site Facility	Dept. of Corrections
												Route	SMTA
												Sheet	1 of 9

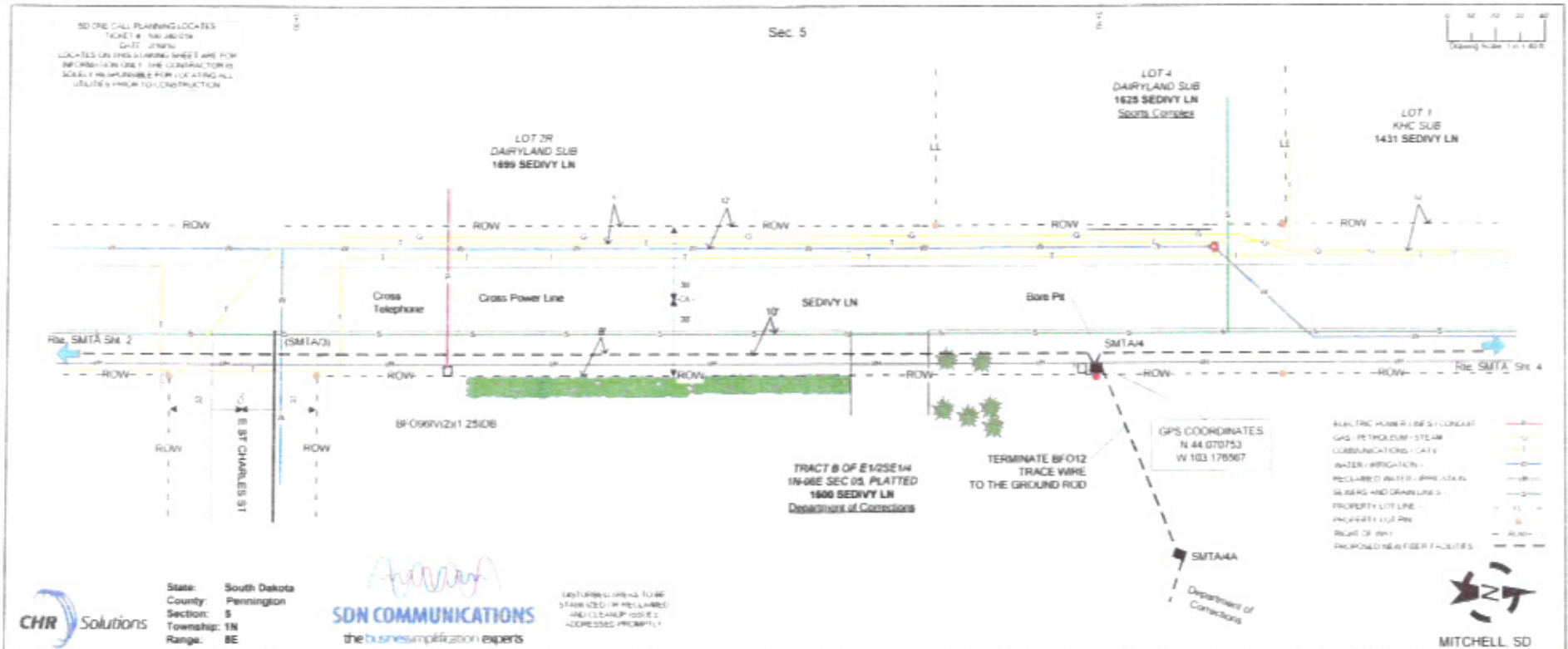
RECEIVED

FEB 9 2010

Rapid City Growth  
 Management Department



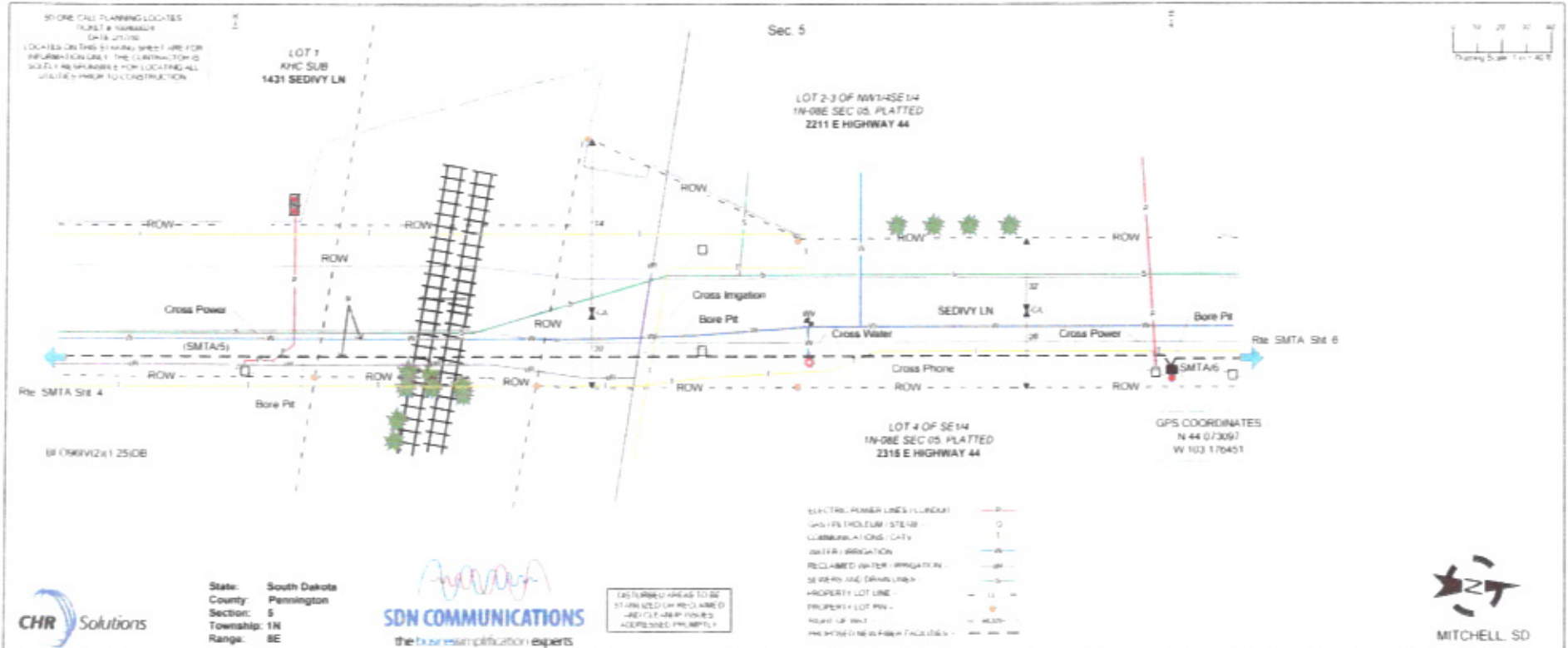
From	To	Cable / Conduit Type, Size, Suffix	QTY	From Sequential	To Sequential	Reel Number	Misc Unit	QTY	Misc Unit	QTY	Remarks	As Staked Fiber Facilities	
SMTA/2	SMTA/3	BFO96W(2)(1 25)DB	430				BHF(30x48x36)T	1	BM55A	1	200' COIL	WO	200 81
SMTA/3	SMTA/3	BFO96	200									Exchange	Rapid City
												Route	SMTA
												ROW	Public
												Staked By	JPP Date Feb-10
												Plowed By	Date
												As Built By	Date
												Rev By	Date
												Project	200.81
												Site Facility	Dept. of Corrections
												Route	SMTA
												Sheet	2 of 9



From	To	Cable / Conduit Type, Size, Suffix	QTY	From Sequential	To Sequential	Reel Number	Misc Unit	QTY	Misc Unit	QTY	Remarks	As Staked Fiber Facilities	
SMTA/3	SMTA/4	BFO96IV(2)(1 25)DB	310				BHF(30x48x36)T	1	BM2(5/8)(8)	1		WO	200 81
SMTA/4	SMTA/4	BFO96	200				BM55A	1	HBFO(96)(96)(12)	1	200' COIL	Exchange	Rapid City
SMTA/4	SMTA/4	BFO12	100								100' TAIL	Route:	SMTA
SMTA/4	SMTA/4A	BFO12IV(1)(1 25)DB	250				BHF(12x24x18)T	1	BM2(3/8)(4)	1	12 Fiber Dielectric w/ trace wire terminated	ROW:	Public
SMTA/4	Data Room	SEOD12	100				BM21	1			Department of Corrections Data Office	Staked By	JPP Date Feb-10
											12 Fiber Dielectric	Plowed By	Date
												As Built By	Date
												Rev By	Date
												Project	200.81
												Site Facility	Dept. of Corrections
												Route	SMTA
												Sheet	3 of 9







State: South Dakota  
 County: Pennington  
 Section: 5  
 Township: 1N  
 Range: 8E



UNSTAKED AREAS TO BE STAKED OR RECLAIMED ARE CLEARLY MARKED AND APPROVED PROMPTLY

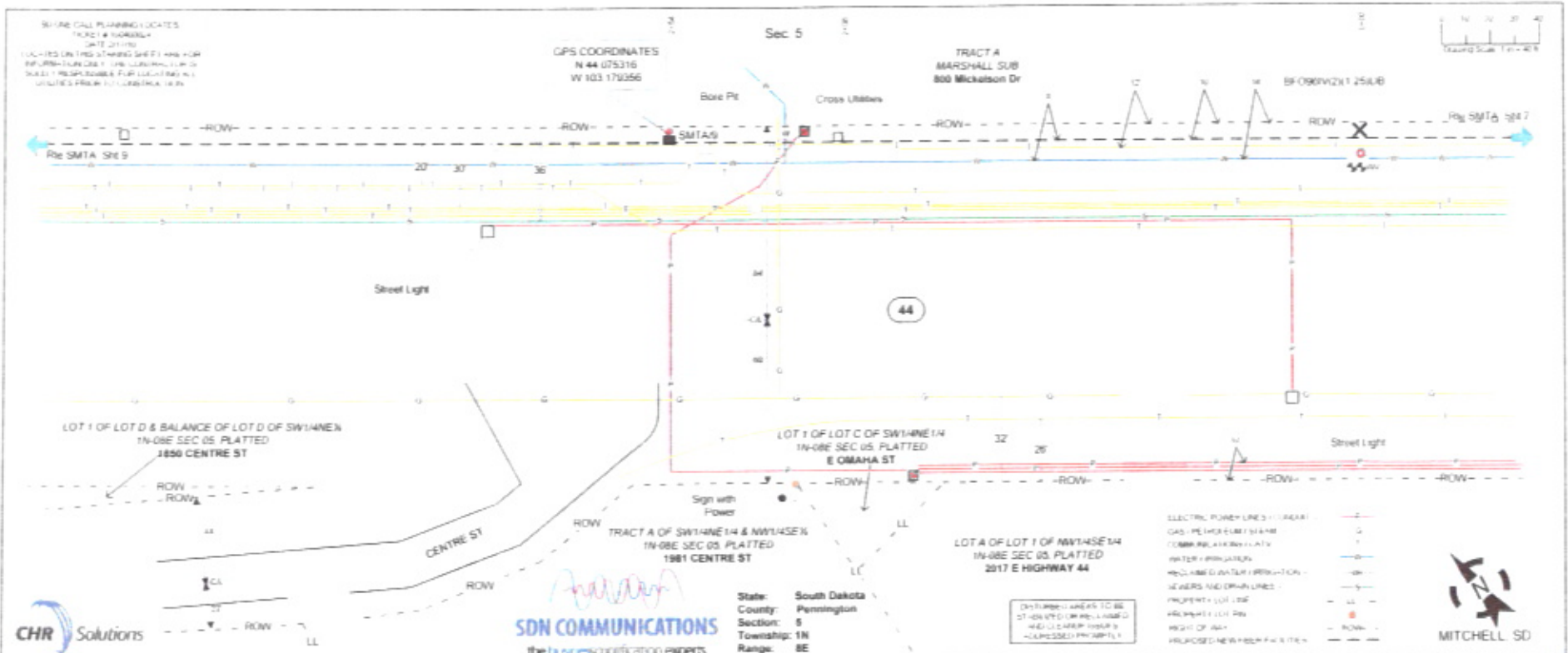
- ELECTRIC POWER LINES (LUMBER) ———
- GAS (FLEXIBLE) STEEL ———
- COMMUNICATIONS - CATV ———
- IRRIGATION ———
- RECLAIMED WATER IRRIGATION ———
- SEWER AND DRAIN LINES ———
- PROPERTY LOT LINE ———
- PROPERTY LOT PIN ———
- RIGHT OF WAY ———
- UNSTAKED AREAS TO BE STAKED OR RECLAIMED ———



From	To	Cable / Conduit Type, Size, Suffix	QTY	From Sequential	To Sequential	Reel Number	Misc Unit	QTY	Misc Unit	QTY	Remarks	As Staked Fiber Facilities	
SMTA/5	SMTA/6	BFO96(12)(1.25)DB	420				BHF(30x48x36)T	1	BM55A	1	200' COIL	WO:	201 05
SMTA/6	SMTA/6	BFO96	200									Exchange:	Rapid City
												Route:	SMTA
												ROW:	Public
												Staked By	JPP Date Feb-10
												Plowed By	Date
												As Built By	Date
												Rev By	Date
												Project	201.05
												Site Facility	West Dakota Tech
												Route	SMTA
												Sheet	5 of 9

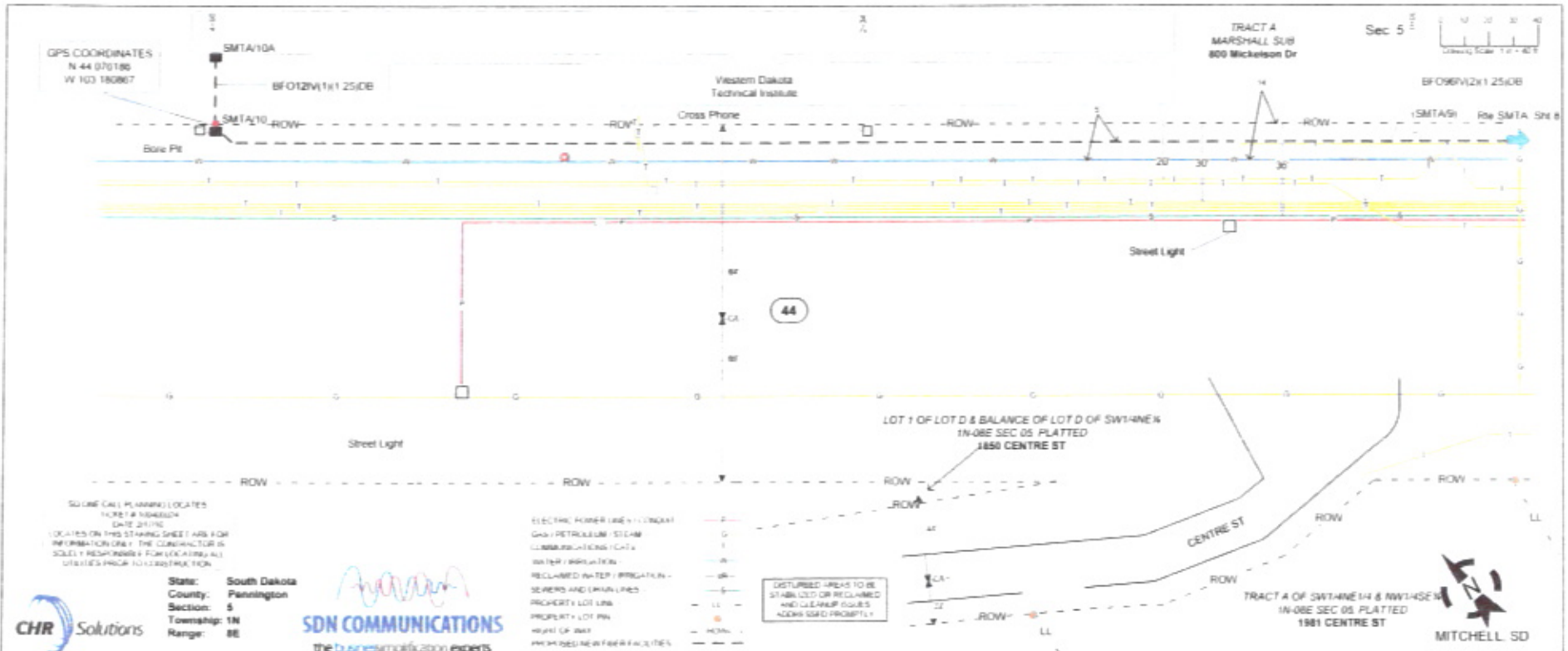






From	To	Cable / Conduit Type, Size, Suffix	QTY	From Sequential	To Sequential	Reel Number	Misc Unit	QTY	Misc Unit	QTY	Remarks	As Staked Fiber Facilities	
X	SMTA/9	BFO96W2X125)DB	260				BHF(30x48x36)T	1	BM55A	1	200' COIL	WO	201 05
	SMTA/9	BFO96	200									Exchange	Rapid City
												Route	SMTA
												ROW	Public
												Staked By	JPP Date Feb-10
												Plowed By	Date
												As Built By	Date
												Rev By	Date
												Project	201.05
												Site Facility	West Dakota Tech
												Route	SMTA
												Sheet	8 of 9





SO ONE CALL PLANNING LOCATES  
 HERE IS NUMBER  
 DATE 2/1/10  
 LOCATION ON THIS STAKING SHEET HAS FOR  
 INFORMATION ONLY. THE CONTRACTOR IS  
 SOLELY RESPONSIBLE FOR VERIFYING ALL  
 UTILITIES PRIOR TO CONSTRUCTION.

ELECTRIC POWER LINE (CONDUIT)  
 GAS / PETROLEUM / STEAM  
 COMMUNICATIONS / CABLE  
 WATER / IRRIGATION  
 RECLAIMED WATER / IRRIGATION  
 SEWERS AND DRAIN LINES  
 PROPERTY LOT LINE  
 RIGHT OF WAY  
 HIGHWAY CENTERLINE  
 FROM EXISTING FIBER FACILITIES

DISTURBED AREAS TO BE  
 STABILIZED OR RECLAIMED  
 AND CLEARER SIGNS  
 ADDED ASAP PROMPTLY

**CHR Solutions**

State: South Dakota  
 County: Pennington  
 Section: 5  
 Township: 1N  
 Range: 8E

**SDN COMMUNICATIONS**  
 the business simplification experts



From	To	Cable / Conduit Type, Size, Suffix	QTY	From Sequential	To Sequential	Reel Number	Misc Unit	QTY	Misc Unit	QTY	Remarks	As Staked Fiber Facilities			
SMTA/9	SMTA/10	BFO96V(2)(1 25)DB	490				BHF(30x48x36)T	1	BM2(5/8)(8)	1		WO: 201 05 Exchange Route: Rapid City ROW: SMTA Public			
SMTA/10	SMTA/10	BFO96	100				BM55A	1	HBFO(95)(12)	1	100' TAIL				
	SMTA/10	BFO12	100								100' TAIL				
SMTA/10	SMTA/10A	BFO12V(1)(1 25)DB	450				BHF(12x24x18)T	1	BM2(3/8)(4)	1	12 Fiber Dielectric with trace wire terminated	Staked By	JPP	Date	Feb-10
												Plowed By		Date	
												As Built By		Date	
SMTA/10A	D-MARK	SEOD12					BM21	1			12 Fiber Dielectric Western Dakota Tech	Rev By		Date	
												Project	201.05		
												Site Facility	West Dakota Tech		
												Route	SMTA		
												Sheet	9	of	9