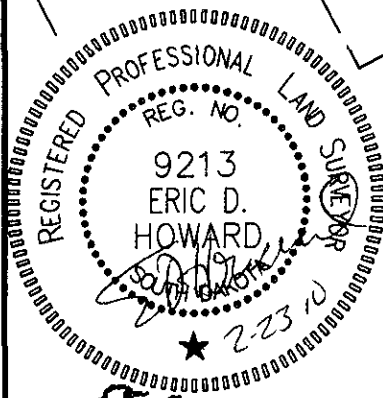
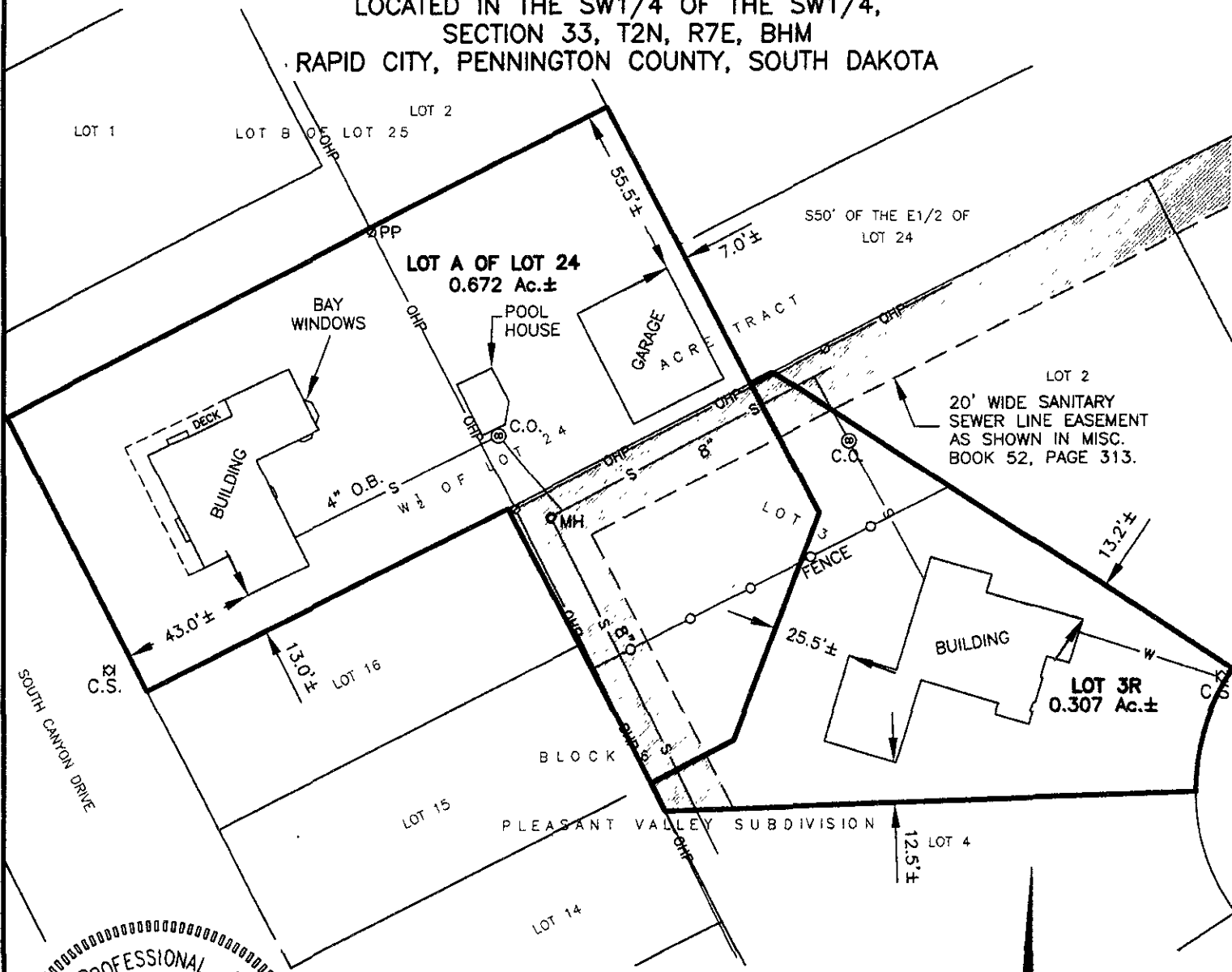


LOT A OF LOT 24 OF ACRE TRACT, AND LOT 3R OF BLOCK 6, OF PLEASANT VALLEY SUBDIVISION

(formerly W1/2 of Lot 24 of Acre Tract, and Lot 3 of Block 6 of Pleasant Valley Subdivision)

LOCATED IN THE SW1/4 OF THE SW1/4,
SECTION 33, T2N, R7E, BHM

RAPID CITY, PENNINGTON COUNTY, SOUTH DAKOTA



LEGEND

- ⊙ PP
- ⊗ CLEAN OUT
- ⊠ CURB STOP
- CHAIN LINK FENCE
- OHP— OVER HEAD POWER
- S— SANITARY SEWER LINE



FEBRUARY 17, 2010



SCALE 1" = 50'

Renner & Associates, LLC.

616 Sixth St. * Rapid City, SD 57701 * 605/721-7310
 FAX: 605/721-7313 * E-MAIL: Gary@RennerAssoc.com
 * Spearfish 605/717-0016 *



CITY HALL - 1903