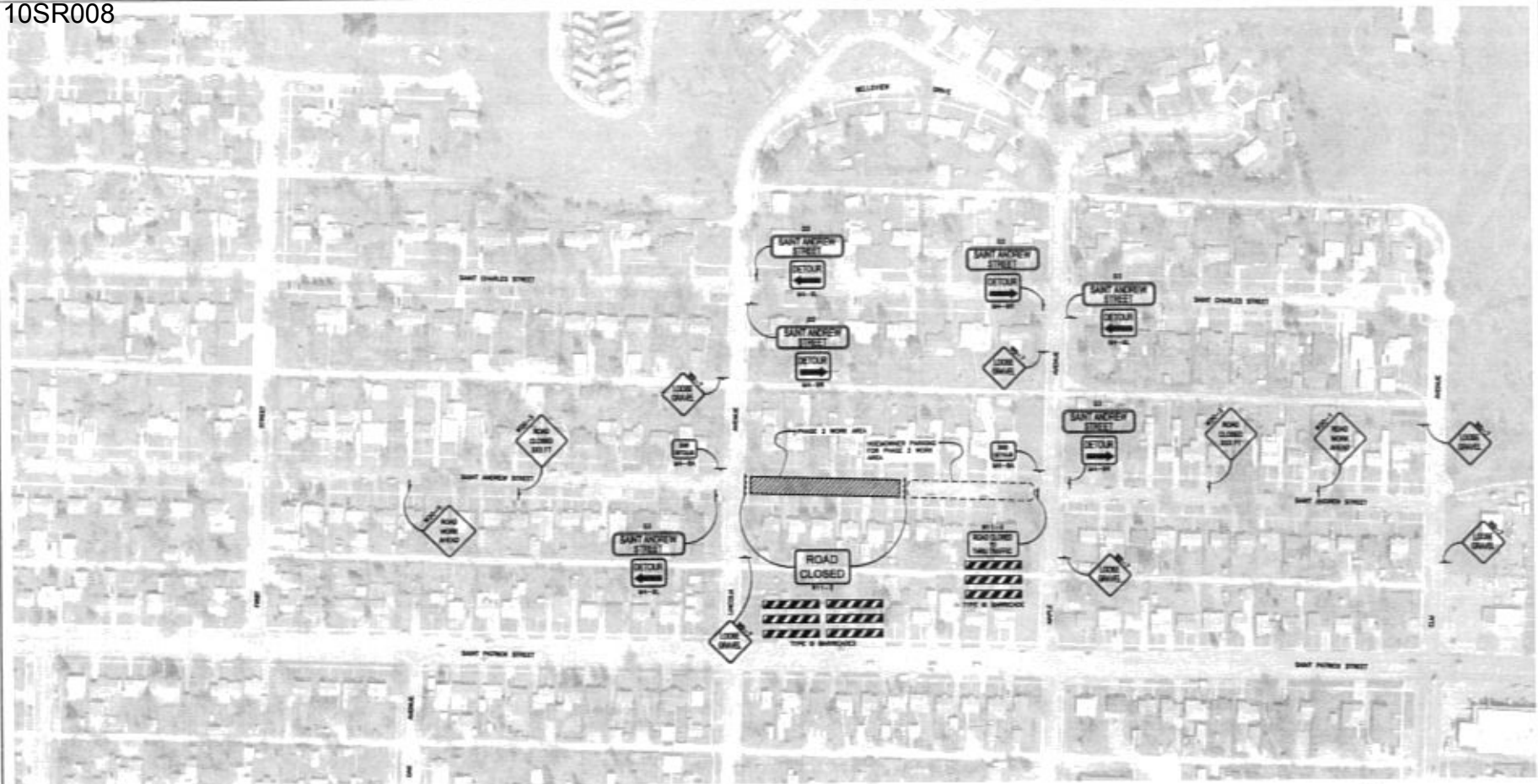


IRON LOCATIONS ON THIS PLAN ARE INDICATIVE. THEY LOCATIONS SHALL BE DETERMINED BY THE ENGINEER IN THE FIELD.

95% SUBMITTAL
PRELIMINARY
FOR REVIEW ONLY





NOTE:
LOCATIONS ON THIS PLAN ARE APPROXIMATE. FINAL LOCATIONS SHALL BE DETERMINED BY THE CONTRACTOR IN THE FIELD.



95% SUBMITTAL
PRELIMINARY
FOR REVIEW ONLY



1001 LANTANA DRIVE
SUITE 100
FORT LAUDERDALE, FL 33304
TEL: 954.333.1100
FAX: 954.333.1101
WWW.CETEC-FL.COM

PROJECT: SAINT ANDREW STREET RECONSTRUCTION	
DATE: 05/12/2011	
DESIGNED BY:	CEC
DRAWN BY:	CEC
CHECKED BY:	CEC
APPROVED BY:	CEC
PROJECT NO: 10SR008	
SHEET NO: 2.7	
TRAFFIC CONTROL PLAN (PHASE 2)	



95% SUBMITTAL
PRELIMINARY
FOR REVIEW ONLY



100,000,000
No. 100,000,000
Date: 10/1/2008
Exp. Date: 10/1/2018
www.cetec-engineering.com



SAINT ANDREW STREET
RECONSTRUCTION

TRAFFIC CONTROL
PLAN
(PHASE 4)