

doi:10.1002/ajb.10001

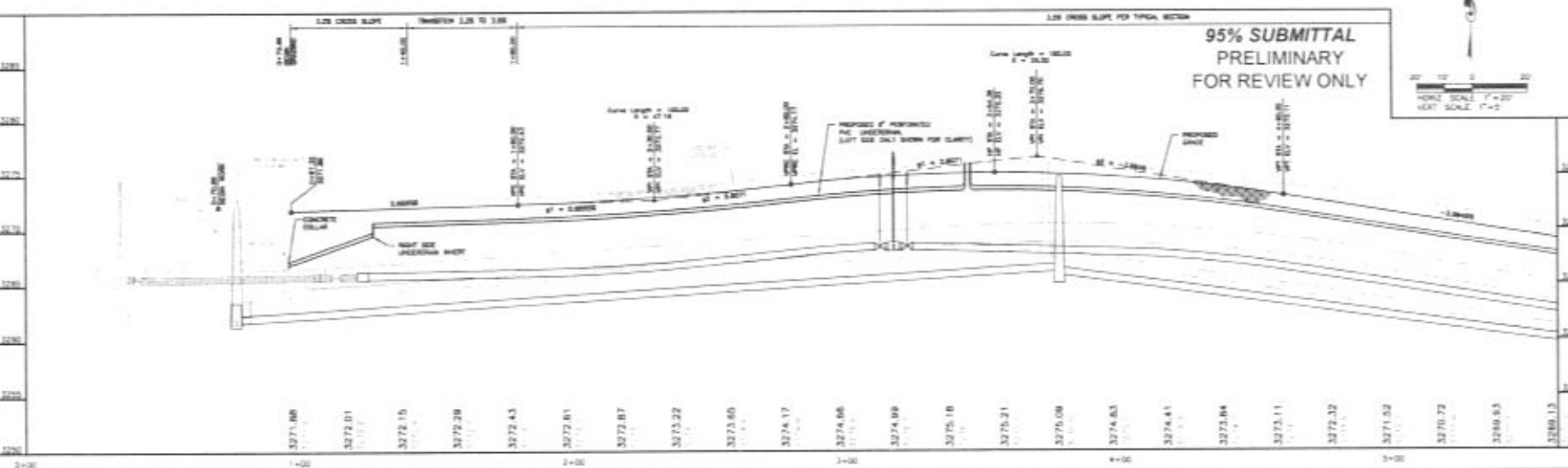
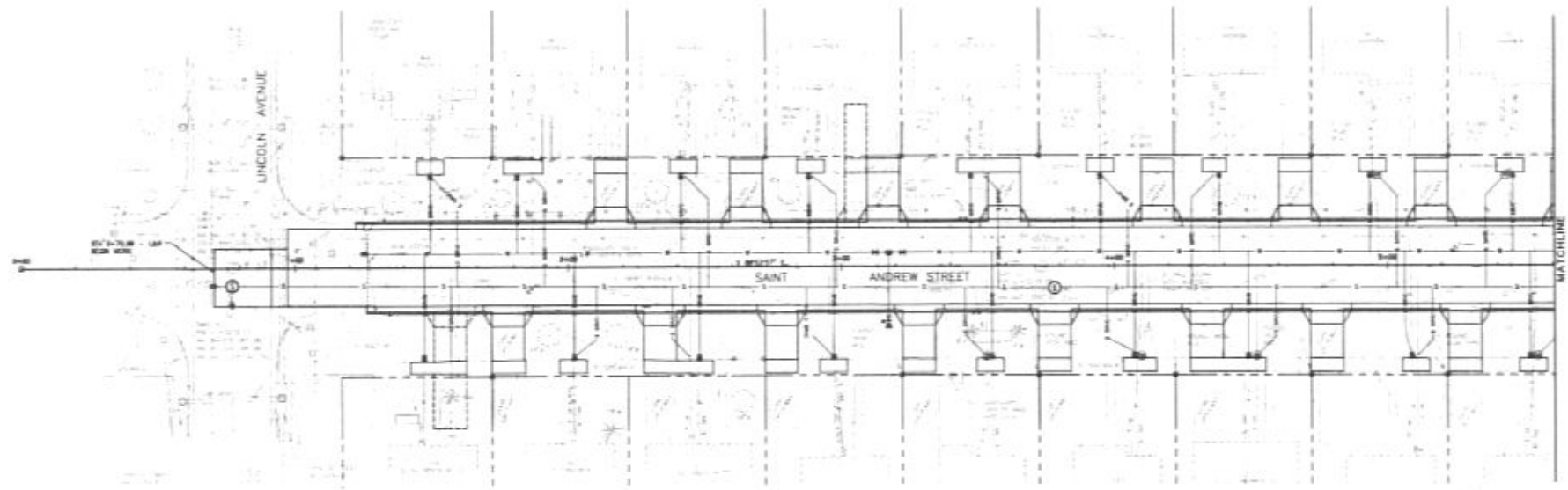


[illegible]

SAINT ANDREW STREET
RECONSTRUCTION

SAINT ANDREW STREET
STREET PLAN and PROP

8.



524 12-21.00 - 12.17H
 METAL UNDERPASS CLOSURE WITH
 FLOOD, I.D. AND CONCRETE CURB

525 12-22.11 - 12.17P
 METAL UNDERPASS CLOSURE WITH
 FLOOD, I.D. AND CONCRETE CURB

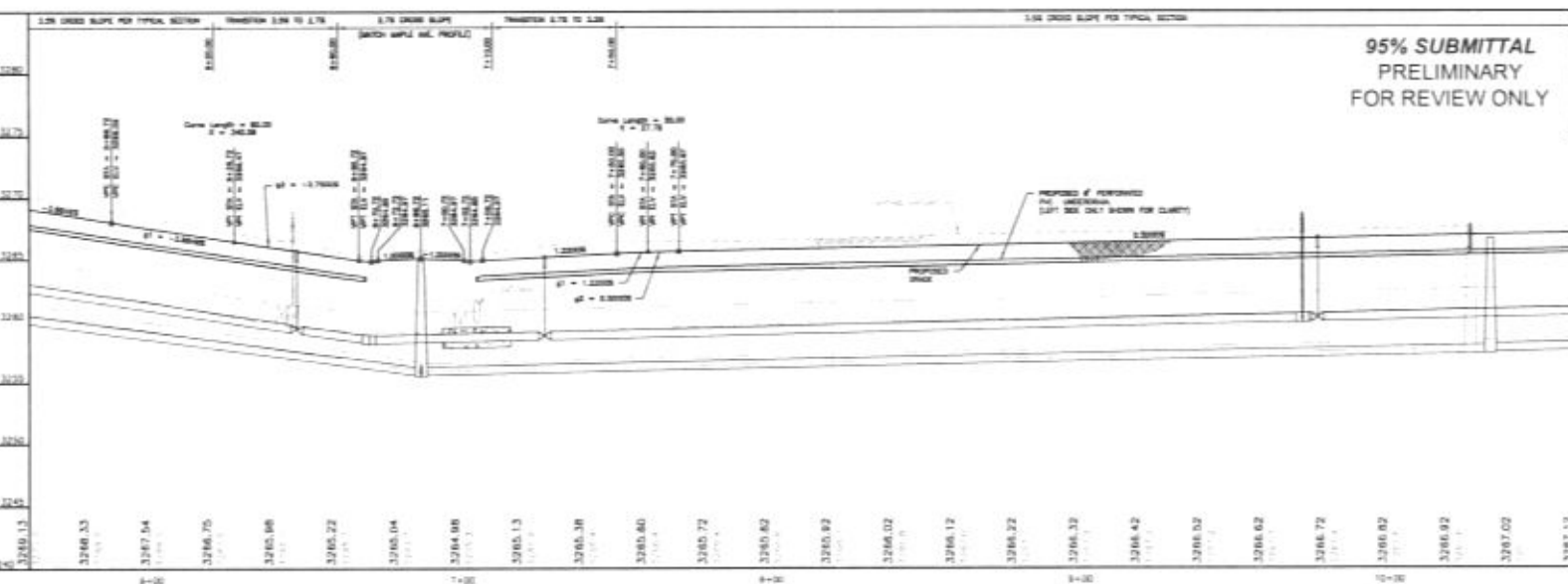
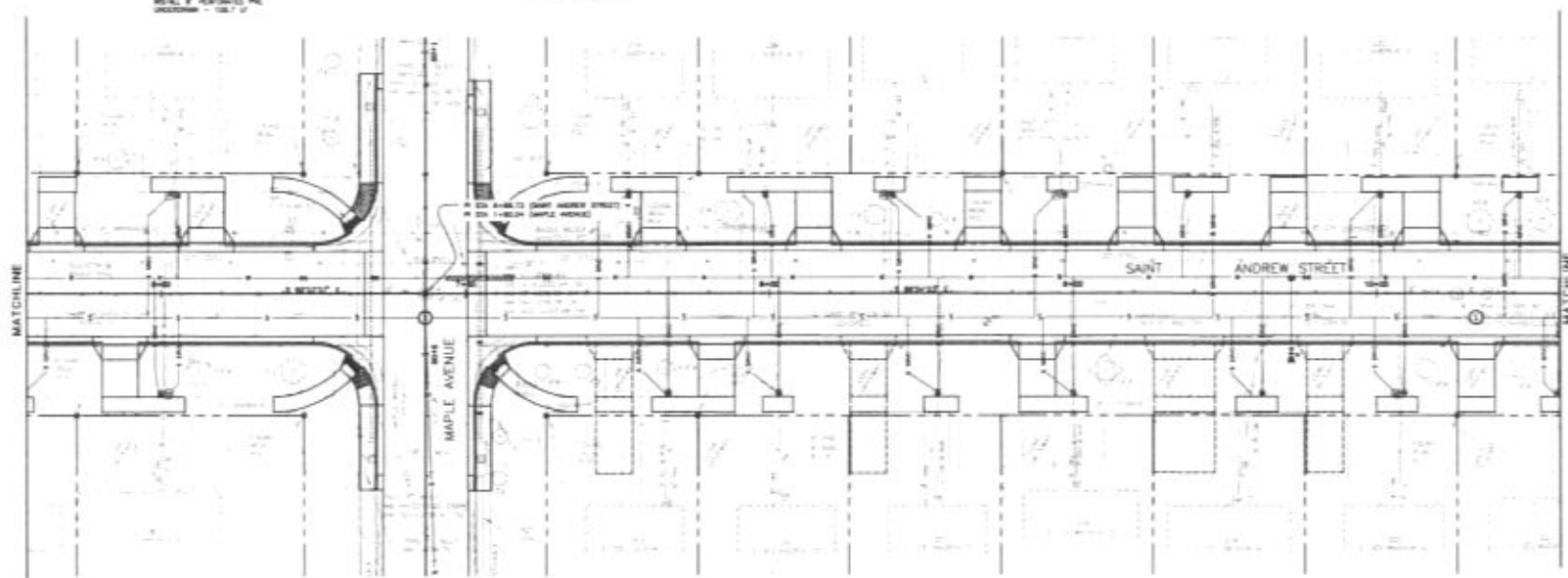
NEW TOLUENE - 17,176 TO
18-00LBS - 17.176
WELL & PERMANENT PUMP
CONCRETE - 200.0 OF

NEW TOLUENE - 17,176 TO
18-00LBS - 17.176
WELL & PERMANENT PUMP
CONCRETE - 200.0 OF

ITEMS TO BE NOTED

EVIDENCE AND CAPTURE OF RED JUMP
FROM CONCRETE COLLAR AROUND PIPE
JUMP AT THE FOLLOWING LOCATIONS:

Sta 7+00.71 - 8.00'
Sta 7+00.71 - 10.00'
Sta 7+00.71 - 30.00'



95% SUBMITTAL
PRELIMINARY
FOR REVIEW ONLY

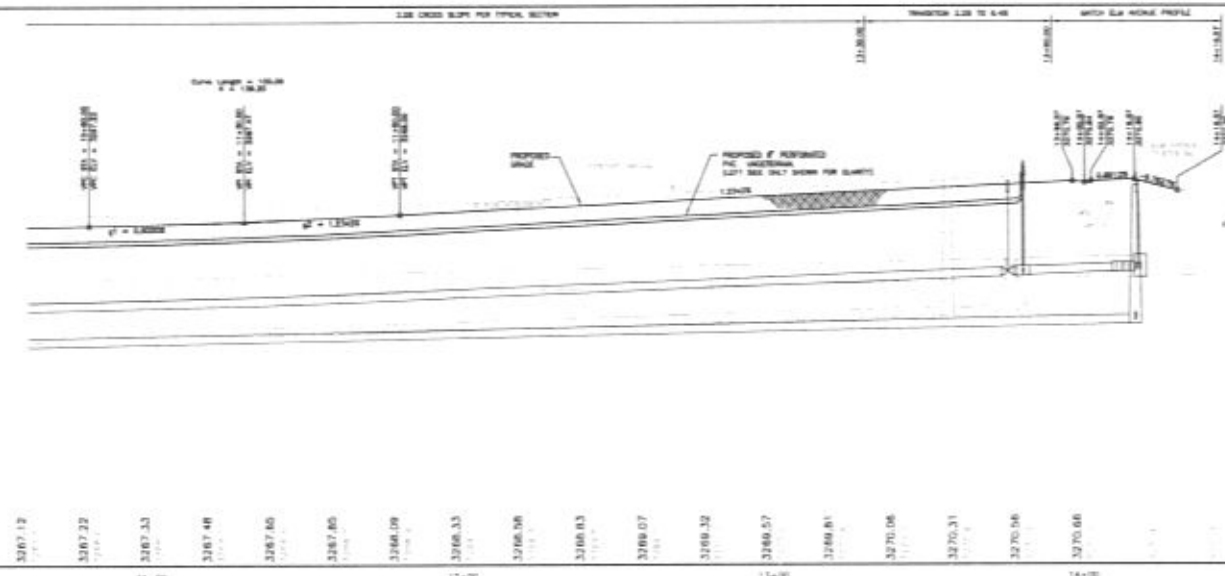
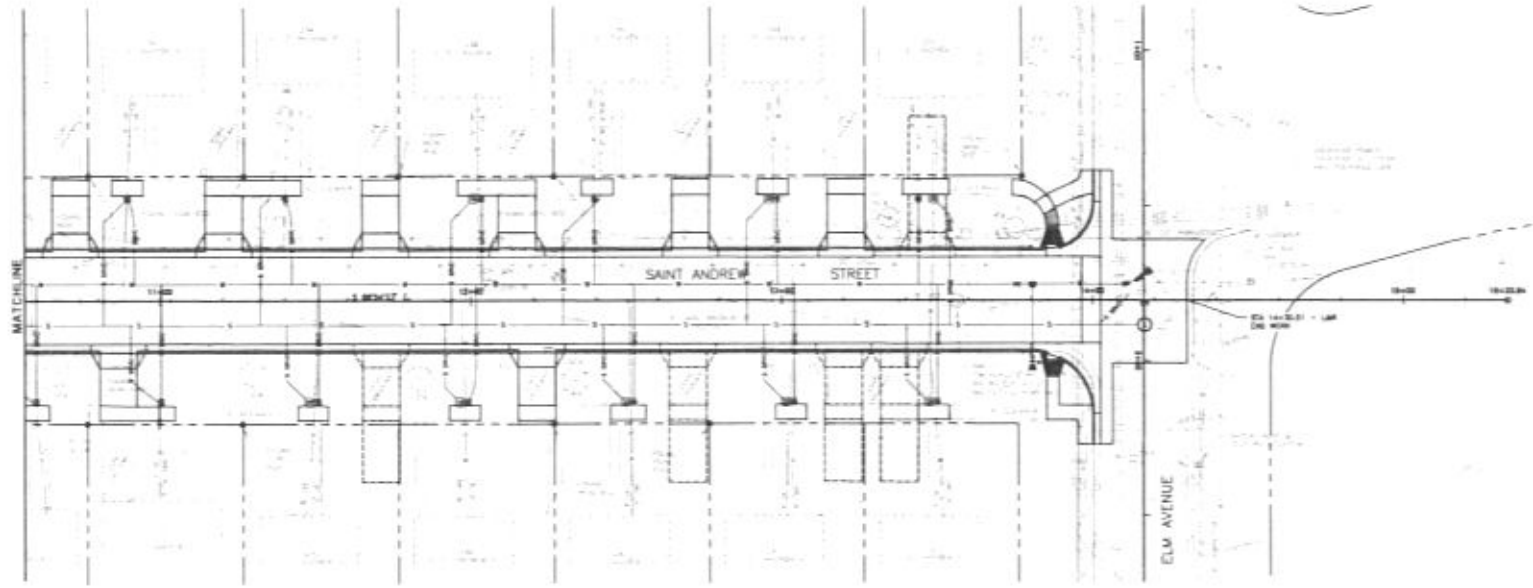


SAINT ANDREW STREET
RECONSTRUCTION

SAINT ANDREW STREET
STREET PLAN and PROFILE
(TA 9-40 to 10-40)

POLYMER CONCRETE
FOR 10-40-00 TO 11-17-00
METAL INTERIOR CLIMATIZING UNIT
THICK, 1/2" AND CONCRETE CLIP
FOR 10-40-00 TO 11-17-00
METAL INTERIOR CLIMATIZING UNIT
THICK, 1/2" AND CONCRETE CLIP

FOR 10-40-00 TO 11-17-00
METAL INTERIOR CLIMATIZING UNIT
THICK, 1/2" AND CONCRETE CLIP
FOR 10-40-00 TO 11-17-00
METAL INTERIOR CLIMATIZING UNIT
THICK, 1/2" AND CONCRETE CLIP



95% SUBMITTAL
PRELIMINARY
FOR REVIEW ONLY

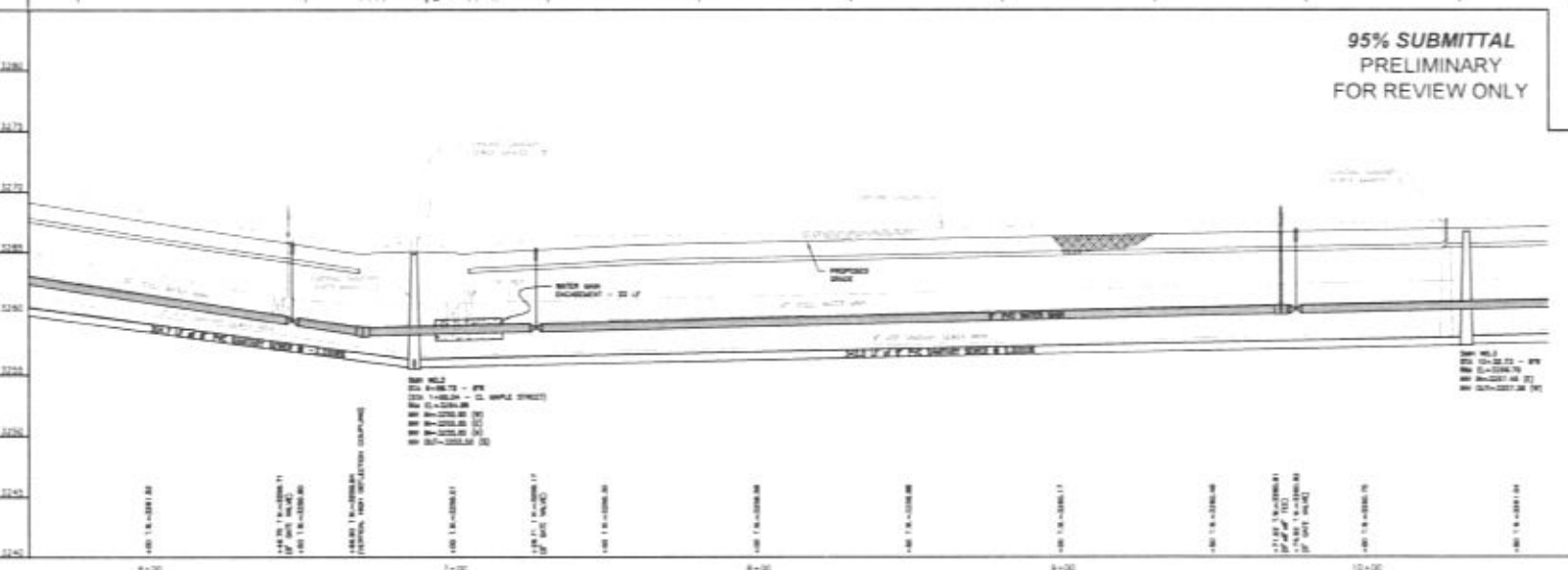
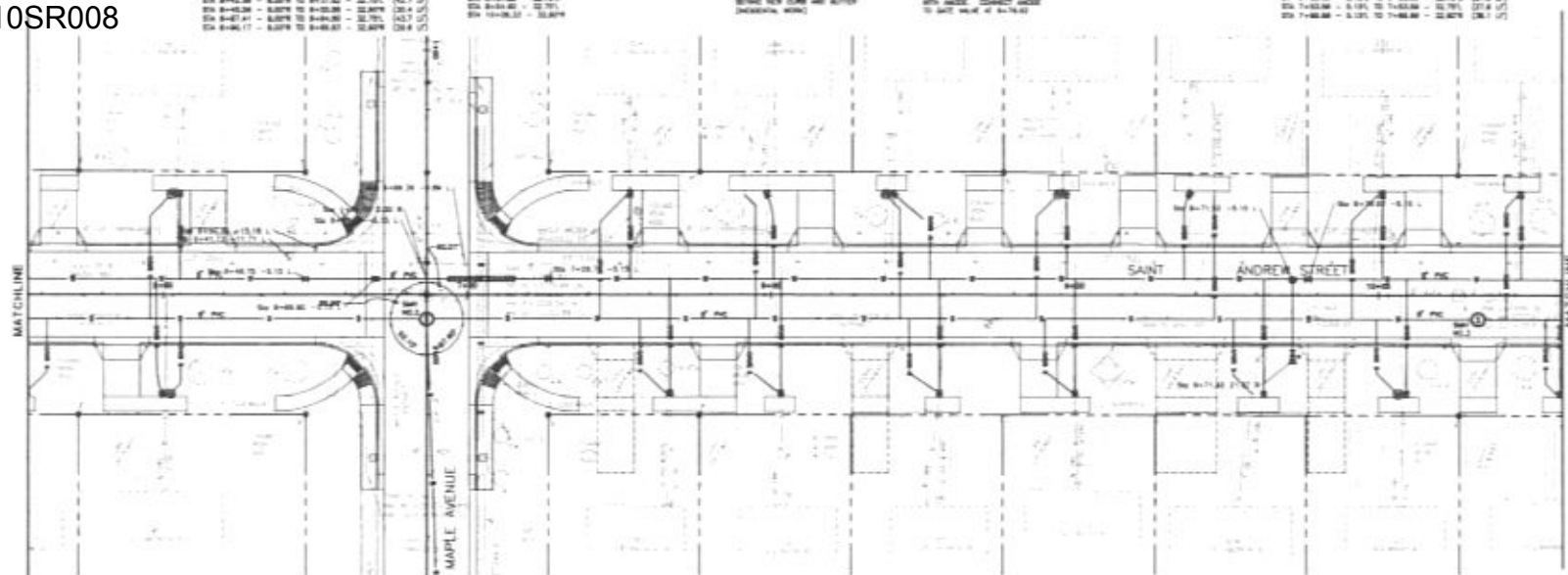
cetec
Engineering & Construction

1000 University Blvd.
St. Louis, MO 63103
Phone: (314) 437-1111
Fax: (314) 437-1112
www.cetec-engineering.com

SAINT ANDREW STREET
STREET PLAN AND PROFILE
STA 10+00 TO 15+00

5.4

10SR008



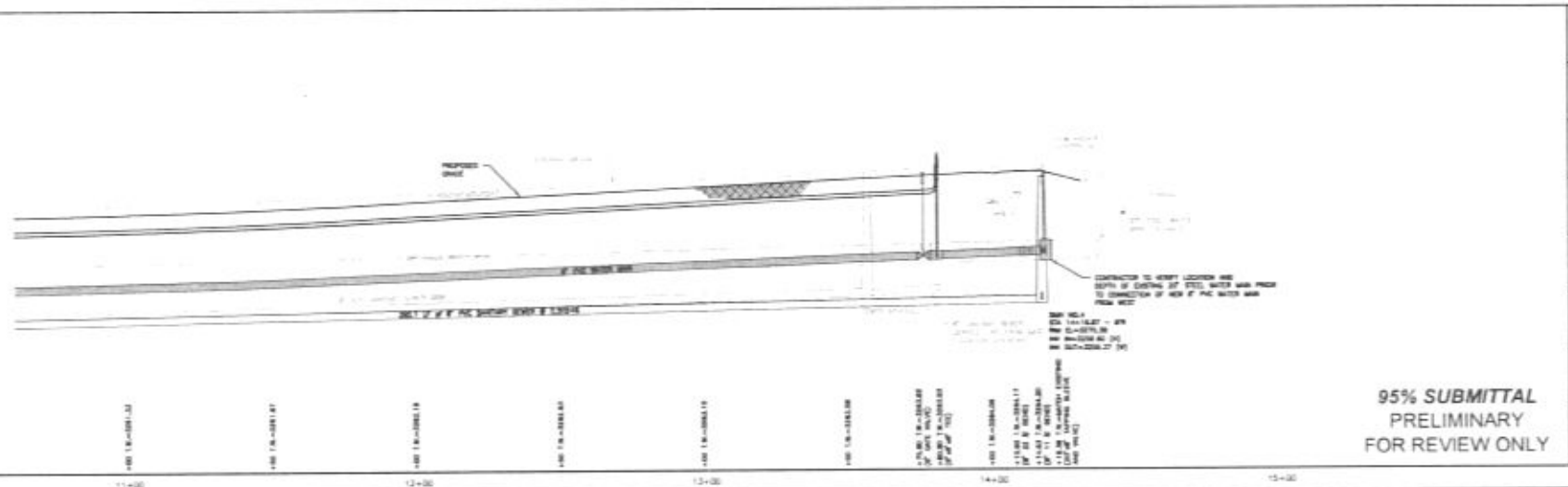
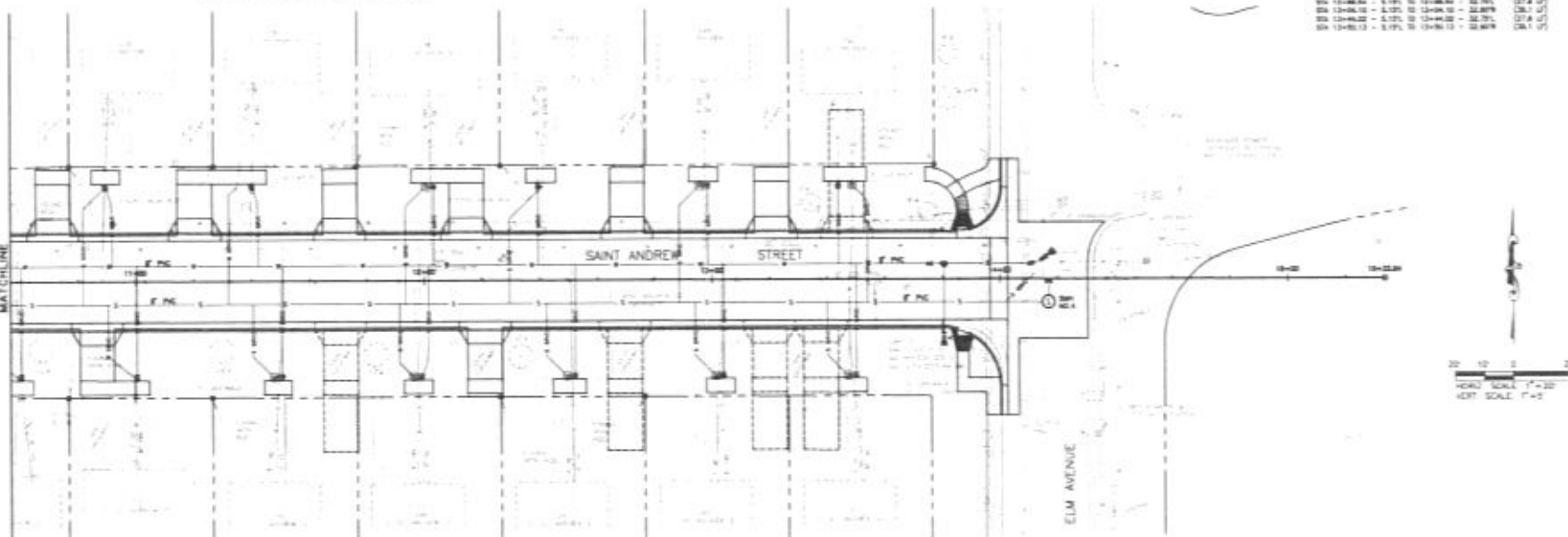
95% SUBMITTAL
PRELIMINARY
FOR REVIEW ONLY

SAINT ANDREW STREET
RECONSTRUCTION

SAINT ANDREW STREET
TOILET and SANITARY ENGINEERING
PLAN and PROFILE
SHEET 3-48 TO 3-49

January 17, 2018 2:15 PM
Drawing: SAINT ANDREW STREET RECONSTRUCTION (PLAN AND PROFILE)
PROJECT: SAINT ANDREW STREET RECONSTRUCTION (PLAN AND PROFILE)
SHEET: SAINT ANDREW STREET RECONSTRUCTION (PLAN AND PROFILE)

STATION	EXISTING ELEVATION	PROPOSED ELEVATION	REMARKS
10+00.00	11.450	11.450	START OF PAVEMENT
10+05.00	11.450	11.450	START OF PAVEMENT
10+10.00	11.450	11.450	START OF PAVEMENT
10+15.00	11.450	11.450	START OF PAVEMENT
10+20.00	11.450	11.450	START OF PAVEMENT
10+25.00	11.450	11.450	START OF PAVEMENT
10+30.00	11.450	11.450	START OF PAVEMENT
10+35.00	11.450	11.450	START OF PAVEMENT
10+40.00	11.450	11.450	START OF PAVEMENT
10+45.00	11.450	11.450	START OF PAVEMENT
10+50.00	11.450	11.450	START OF PAVEMENT
10+55.00	11.450	11.450	START OF PAVEMENT
10+60.00	11.450	11.450	START OF PAVEMENT
10+65.00	11.450	11.450	START OF PAVEMENT
10+70.00	11.450	11.450	START OF PAVEMENT
10+75.00	11.450	11.450	START OF PAVEMENT
10+80.00	11.450	11.450	START OF PAVEMENT
10+85.00	11.450	11.450	START OF PAVEMENT
10+90.00	11.450	11.450	START OF PAVEMENT
10+95.00	11.450	11.450	START OF PAVEMENT
11+00.00	11.450	11.450	END OF PAVEMENT



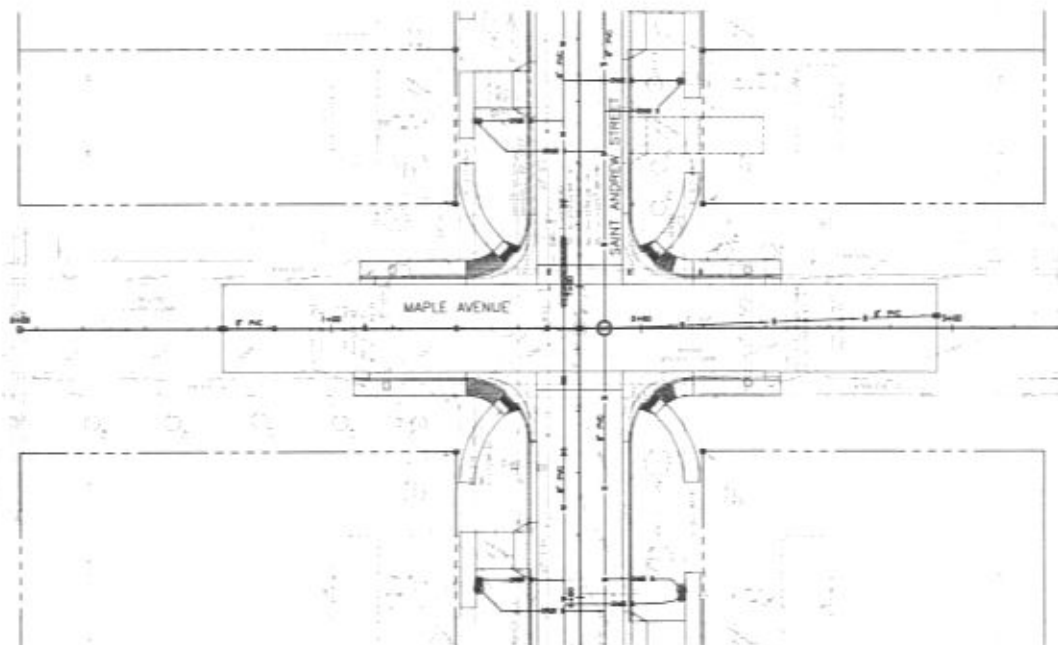


**SAINT ANDREW STREET
RECONSTRUCTION**

95% SUBMITTAL
PRELIMINARY
FOR REVIEW ONLY

SAINT ANDREW STREET
RECONSTRUCTION
PLAN AND PROFILE
STA 10+00 TO 11+00

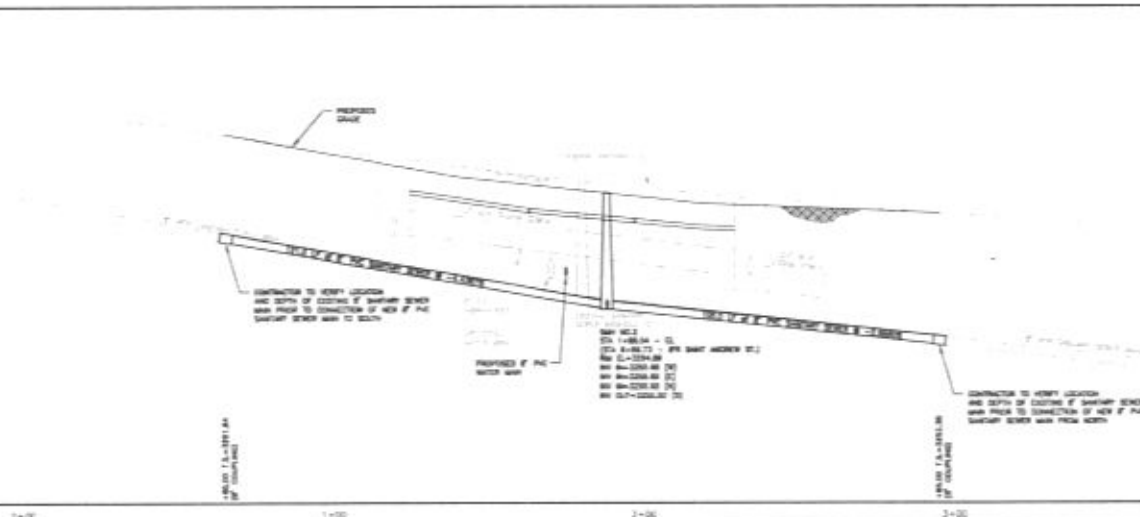
5.7



SEWER, WATER AND GAS

SEE 10SR008 - 10SR008
 METAL IF COUPLED, CONNECT NEW
 IF THE EXISTING SEWER WAS TO
 EXISTING IF NOT EXISTING SEWER WAS

SEE 10SR008 - 10SR008
 METAL IF COUPLED, CONNECT NEW
 IF THE EXISTING SEWER WAS TO
 EXISTING IF NOT EXISTING SEWER WAS



**95% SUBMITTAL
 PRELIMINARY
 FOR REVIEW ONLY**