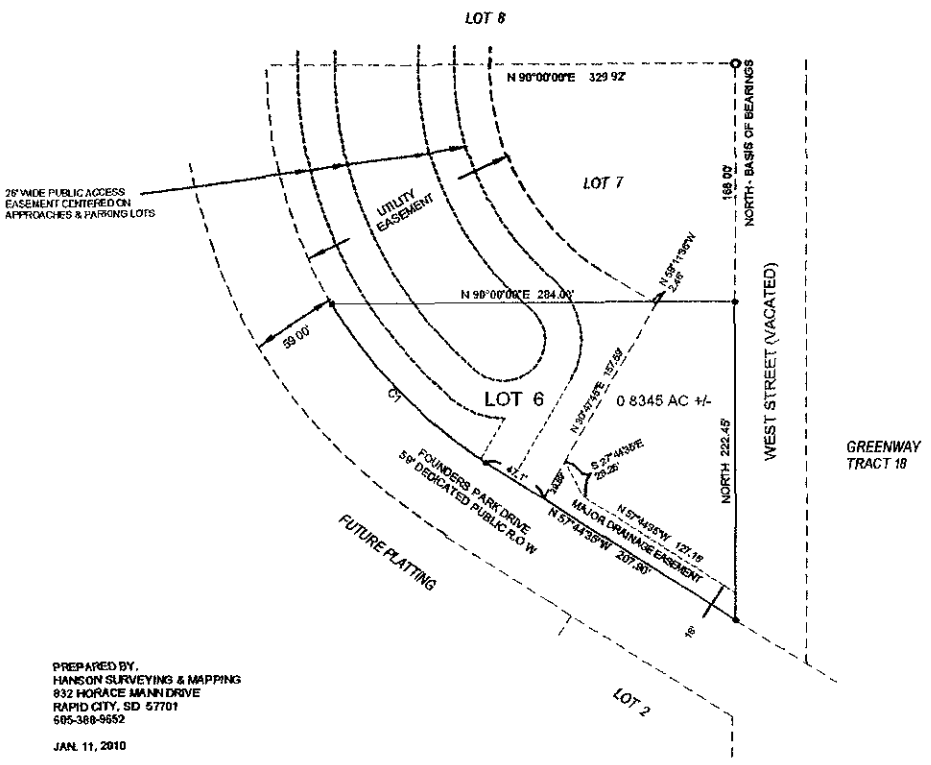
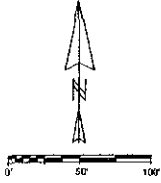


PLAT OF LOT 6 OF FOUNDERS PARK SUBDIVISION
 FORMERLY UNPLATTED PORTION OF W1/2NW1/4SE1/4 IN SECTION 35, T2N, R7E, B H M
 LOCATED IN SE1/4 OF SECTION 35, T2N, R7E, B H M RAPID CITY, PENNINGTON COUNTY, SOUTH DAKOTA



PREPARED BY:
 HANSON SURVEYING & MAPPING
 832 HORACE MANN DRIVE
 RAPID CITY, SD 57701
 605-380-9652
 JAN. 11, 2010

- Found Survey Monument - #6251 Cap
- Set MagnNed in asphalt

UTILITY & MINOR DRAINAGE EASEMENTS 8' ON THE INTERIOR SIDE OF ALL LOT LINES

Curve	Delta Angle	Radius	Arc	Tangent	Chord	Chord Bearing
1	27°11'27.2"	330.50	156.95	79.93	156.38	S 44°08'51.0"E

LATE SUBMITTAL

Rapid City Growth Management Department
 JAN 13 2010

RECEIVED