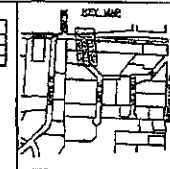


SANITARY SEWER MAIN NOTES		
STATION	CRESET	ITEM DESCRIPTION
1+08.84	CL	INV. 1
3+58.51	CL	INV. 2

SEWER SERVICE LOCATIONS			
LOT NUMBER	SANITARY SEWER SERVICES		
	FUNCTION	DEPTH	LENGTH
LOT 22	2" x 3' 6"	3' 10"	90' x 6"



DEFFAMATION

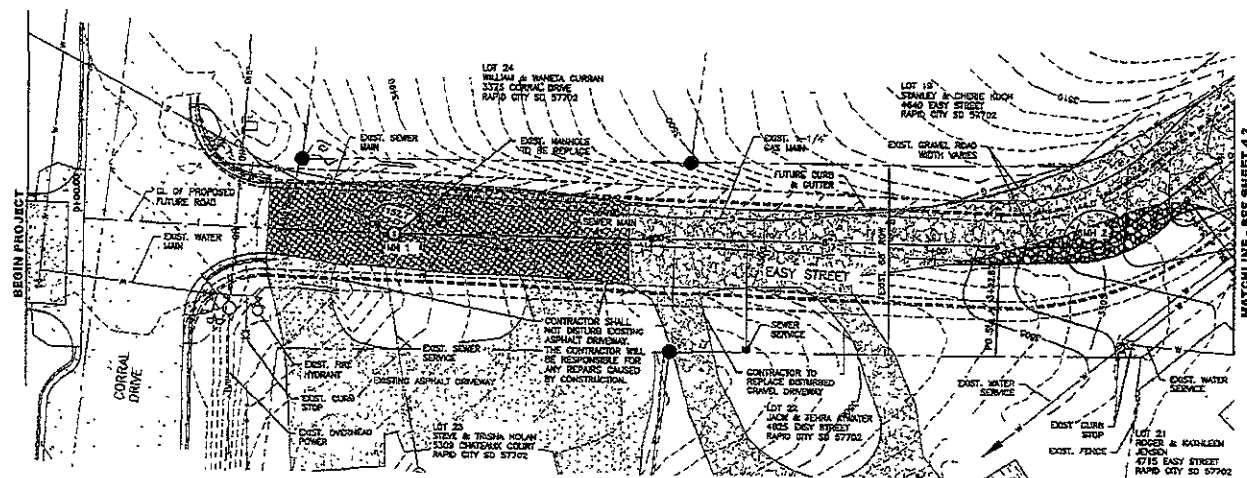
[illegible]

EASY STREET
SANITARY SEWER EXTENSION

SANIT

EASY STREET
PLAN / PROFILE
STA 0+00 TO 4+00

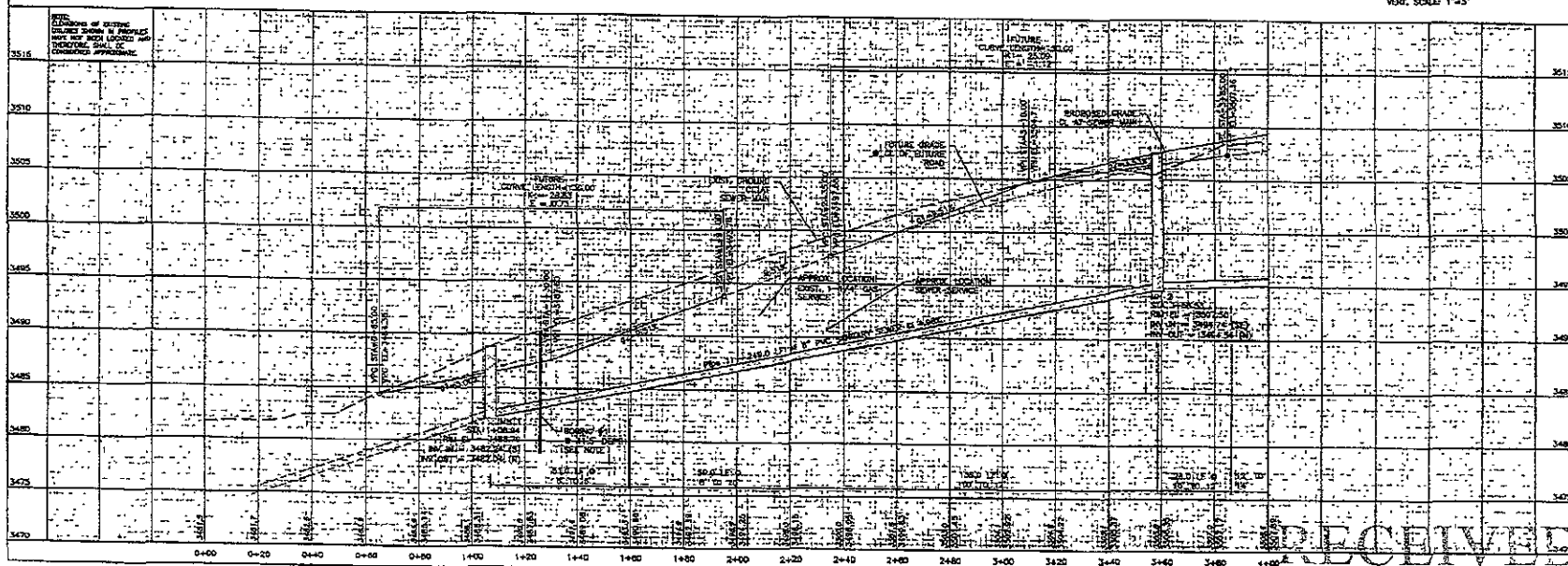
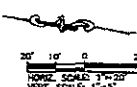
44



NOTE:
THE CONTRACTOR SHALL SOED ALL DISTURBED
GRASS AREAS USING THE NON-IRRIGATED LAWN MIX
IN ACCORDANCE WITH SECTION 70 OF THE
STANDARD SPECIFICATIONS.

BORE HOLE LOCATIONS ARE FOR INFORMATION ONLY. CONTRACTOR IS TO VERIFY DEPTH AND LOCATION PER THE GEOTECHNICAL REPORT PROVIDED BY AMERICAN ENGINEERING TESTING, INC. OCT. 22, 2009 JOB #18-03258, AND FIELD CONDITIONS.

* MASHOLE STATIONS ARE SHOWN ALONG THE CENTERLINE OF FUTURE ROAD.

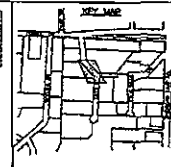


Am 1. 12. 1933

Rapid City Growth Management Department

STATION	DESCRIPTION
4+22.5	1.00' DEPTH
4+22.5	1.00' DEPTH

LOT	STATION	DEPTH	LENGTH
LOT 19	4+22.5	1.00'	41 LF
LOT 21	4+22.5	1.00'	37 LF



DREAM DESIGN
INC.
10000 N. 100th St.
Overland Park, MO 66214
Tel: 913.881.1111
Fax: 913.881.1112
www.dreamdesigninc.com

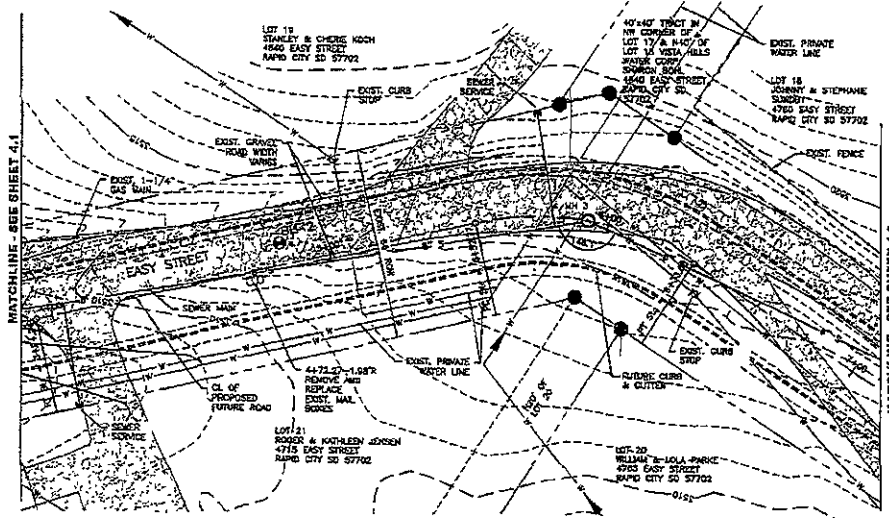


Project No. 10000
Drawing No. 10000
Scale: 1" = 40'
Date: 10/10/10
Author: D.J.G.
Checker: D.J.G.
Engineer: D.J.G.
10000 SUBMITTAL - 10/10/10
10000 SUBMITTAL - 10/10/10
10000 SUBMITTAL - 10/10/10

EASY STREET
SANITARY SEWER EXTENSION

EASY STREET
PLAN/PROFILE
STA 4+00 TO 7+00

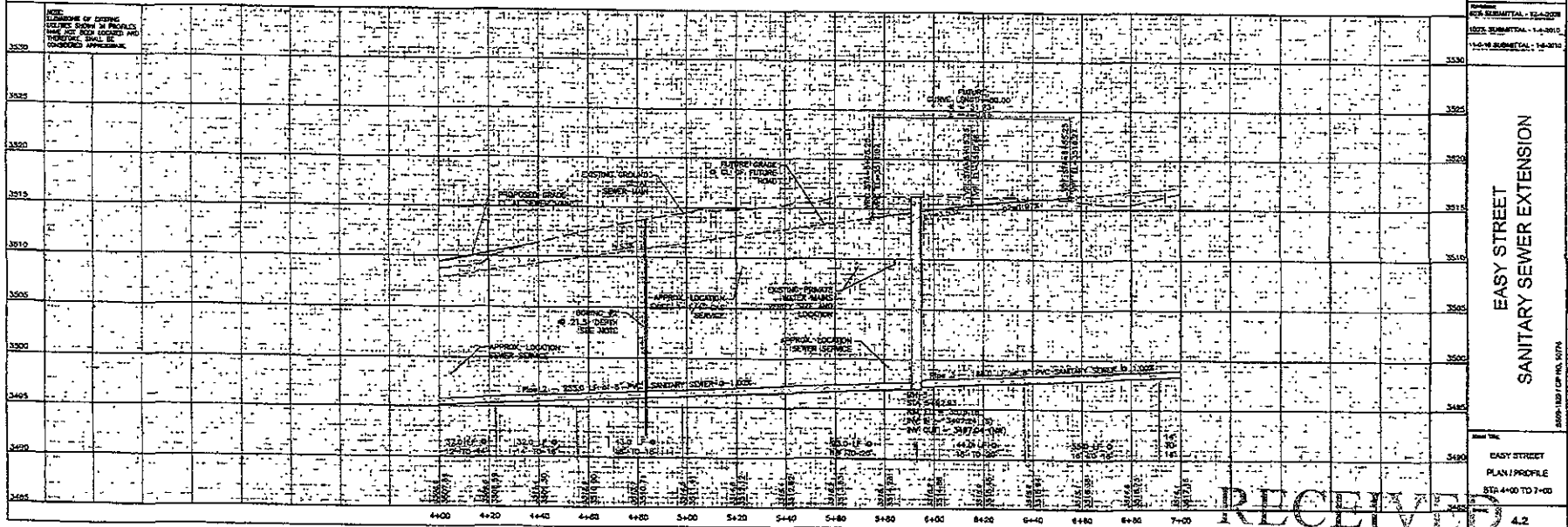
5000-100 / CP NO. 5074



NOTE:
THE CONTRACTOR SHALL REED ALL DISTURBED
GRASS AREAS USING THE NON-IRRIGATED LUMINIX
IN ACCORDANCE WITH SECTION 70 OF THE
STANDARD SPECIFICATIONS.

BORE HOLE LOCATIONS ARE FOR INFORMATION
ONLY. CONTRACTOR IS TO NOTIFY DEPTH AND
LOCATION FOR THE GEOTECHNICAL REPORT
PROVIDED BY AMERICAN ENGINEERING TESTING, INC.
COST: \$2,500.00 P18-03256, AND FIELD
CONDITIONS.

* MANHOLE STATIONS ARE SHOWN ALONG THE
CENTERLINE OF FUTURE ROAD.



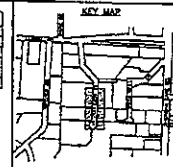
RECEIVED

JAN 11 2010

David City Growth

SANITARY SEWER MAIN NOTES		
STATION	DEPTH	ITEM DESCRIPTION
7+88.00	28.00'	MH 4
11+73.00	0	MH 5 (TERMINATION MANHOLE)

SEWER SERVICE LOCATIONS			
LOT NUMBER	SANITARY SEWER SERVICES		
	STATION	OFFSET	LENGTH
LOT 18	2+23.18	11.821	21 LF
LOT 20	2+28.30	12.261	38 LF
LOT A-10	2+57.87	7.748	20 LF
TRACT A	11+28.12	2.815	30 LF



NOTE:
THE CONTRACTOR SHALL SEED
ALL DISTURBED GRASS AREAS
USING THE NON-BRIDGET LAM
MIX IN ACCORDANCE WITH
SECTION 70 OF THE STANDARD
SPECIFICATIONS.

BORE HOLE LOCATIONS ARE FOR INFORMATION ONLY. CONTRACTOR IS TO VERIFY DEPTH AND LOCATION PER THE GEOTECHNICAL REPORT PROVIDED BY AMERICAN ENGINEERING TESTING, INC. OCT. 22, 2009 JOB #18-03258, AND FIELD CONDITIONS.

* MANHOLE STATIONS ARE
SHOWN ALONG THE CENTERLINE
OF FUTURE ROAD.


 Published by the
 Rapid City Press

DREAM DESIGN



A circular professional engineer seal for the State of California. The outer ring contains the text "REGISTERED PROFESSIONAL ENGINEER" at the top and "STATE OF CALIFORNIA" at the bottom. Inside the ring, the text "P.E. No." is followed by "6383". Below that, the name "R. S. SHAFAI" is printed. A handwritten signature, "R. S. Shafai", is written across the seal. At the bottom, the number "1-2060" is printed.

Date: 1-1-201 Designed By: NPS Design Date: 1-1-201 Drawn By: DEX Print Date: 1-1-201 Approved By: [Signature] Checked By: [Signature]	Date: 1-1-201 Designed By: NPS Design Date: 1-1-201 Drawn By: DEX Print Date: 1-1-201 Approved By: [Signature] Checked By: [Signature]
--	--

100% SUBMITTAL - 7-6-2010

**EASY STREET
SANITARY SEWER EXTENSION**

**EASY STREET
PLAN / PROFILE
STA 7+00 TO END**

4.3

