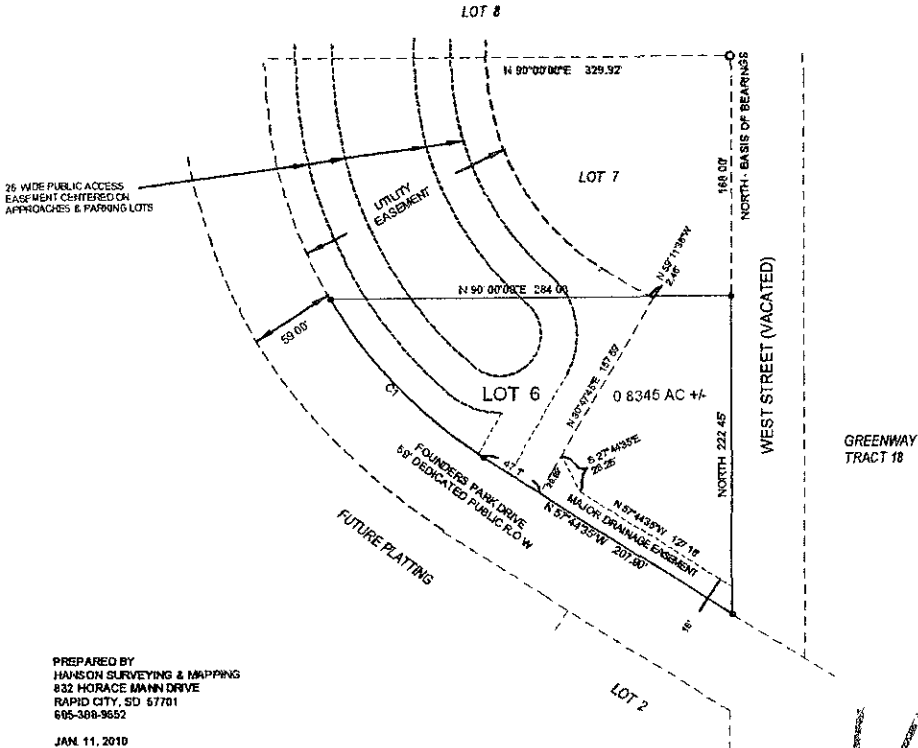
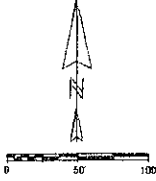


PLAT OF LOT 6 OF FOUNDERS PARK SUBDIVISION
 FORMERLY UNPLATTED PORTION OF W1/2NW1/4SE1/4 IN SECTION 35, T2N, R7E, B.H.M
 LOCATED IN SE 1/4 OF SECTION 35, T2N, R7E, B.H.M RAPID CITY, PENNINGTON COUNTY, SOUTH DAKOTA



PREPARED BY
 HANSON SURVEYING & MAPPING
 832 HORACE MANN DRIVE
 RAPID CITY, SD 57701
 605-388-9652
 JAN 11, 2010

- Found Survey Monument - #6251 Cap
- Set Naghah in asphalt

LATE
 SUBMITTAL

UTILITY & MINOR DRAINAGE EASEMENTS * ON THE INTERIOR SIDE OF ALL LOT LINES

Curve	Delta Angle	Radius	Arc	Tangents	Chord	Chord Bearing
1	27°11'27.2"	330.50	156.85	79.93	155.38	S 44°08'51.0"E

RECEIVED

JAN 13 2010

Rapid City Growth
 Management Department