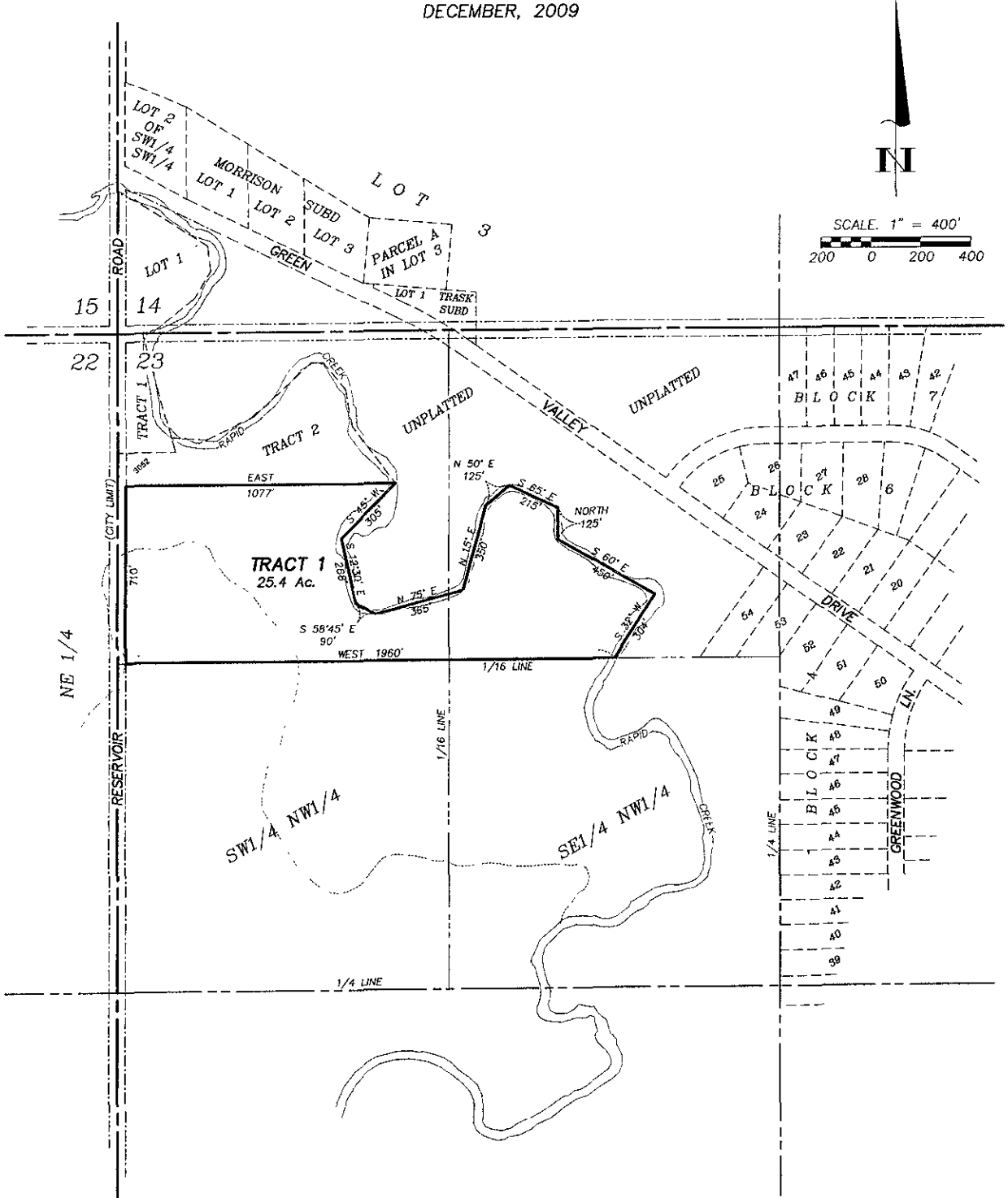


LAYOUT PLAT OF
TRACT 1 OF DAIL SUBDIVISION,
LOCATED IN THE N1/2 NW1/4 OF SECTION 23,
TOWNSHIP 1 NORTH, RANGE 8 EAST OF THE BLACK HILLS MERIDIAN
PENNINGTON COUNTY, SOUTH DAKOTA.

DECEMBER, 2009



RECEIVED

JAN 08 2010

Rapid City Growth
Management Department

PREPARED BY



D.C. Scott
SURVEYORS, INC.
3153 ANDERSON ROAD
RAPID CITY, SD 57703
(605) 393-2400