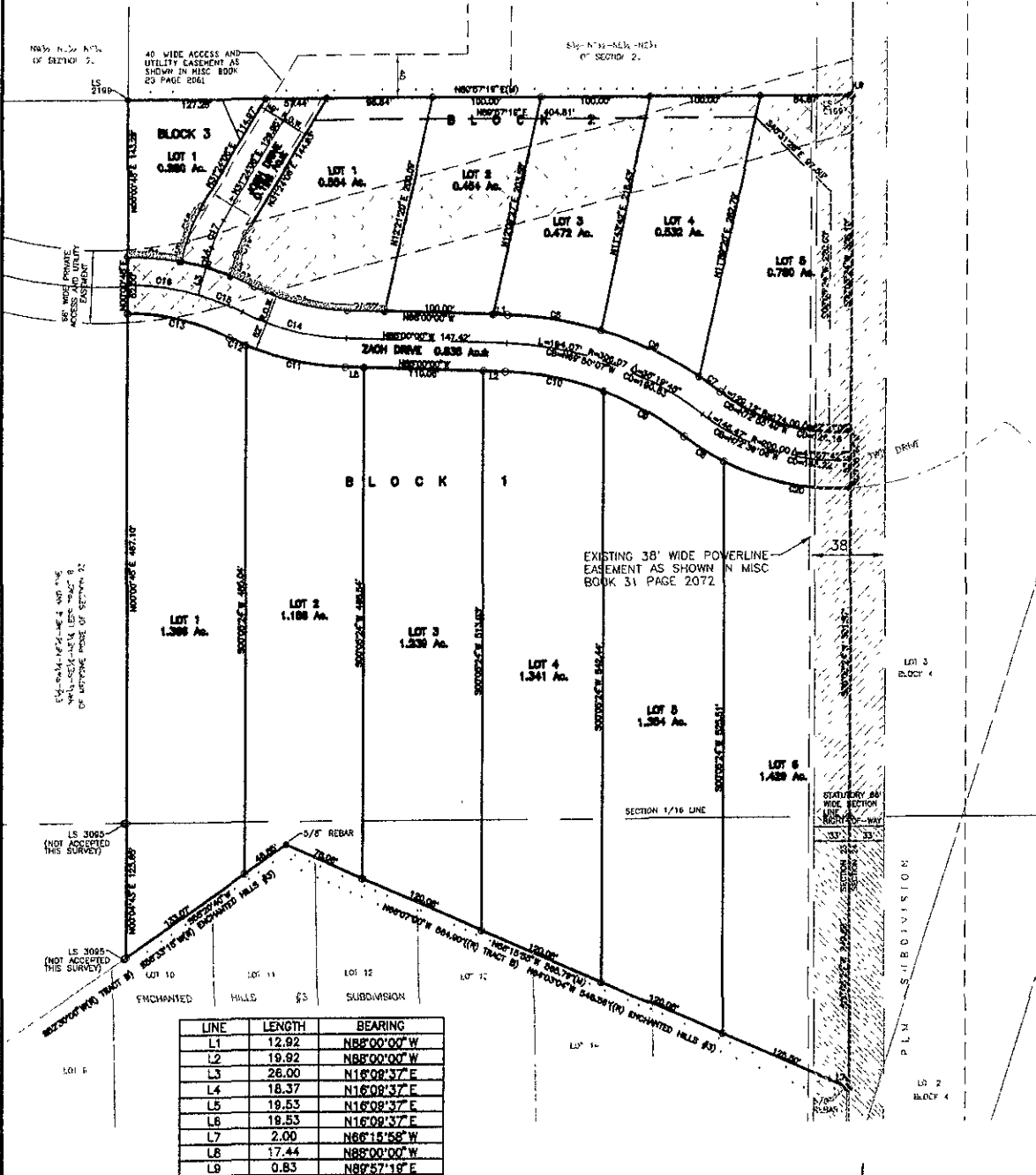


PLAT OF  
**LOTS 1 THROUGH 6 OF BLOCK 1, LOTS 1 THROUGH 5 OF BLOCK 2,  
 AND LOT 1 OF BLOCK 3,**  
**MEDICINE RIDGE SUBDIVISION**  
 LOCATED IN THE SE<sup>1</sup>/<sub>4</sub> OF THE NE<sup>1</sup>/<sub>4</sub> OF THE NE<sup>1</sup>/<sub>4</sub> AND IN THE NE<sup>1</sup>/<sub>4</sub> OF THE SE<sup>1</sup>/<sub>4</sub> OF THE NE<sup>1</sup>/<sub>4</sub>,  
 SECTION 23, T1N, R7E, BHM  
 RAPID CITY, PENNINGTON COUNTY, SOUTH DAKOTA



LINE	LENGTH	BEARING
L1	12.92	N88°00'00"W
L2	19.92	N88°00'00"W
L3	26.00	N16°08'37"E
L4	18.37	N16°08'37"E
L5	19.53	N16°08'37"E
L6	19.53	N16°08'37"E
L7	2.00	N66°15'58"W
L8	17.44	N88°00'00"W
L9	0.83	N88°57'18"E

CURVE	LENGTH	RADIUS	DELTA	CHORD BEARING	CHORD DISTANCE
C1	48.58	259.43	10°43'45"	N84°37'23"W	48.51
C2	49.07	259.43	10°50'16"	N73°50'23"W	49.00
C3	24.71	259.43	5°27'28"	N65°41'31"W	24.70
C4	89.89	205.94	25°02'13"	N76°28'53"W	89.28
C5	87.00	332.07	18°02'40"	N67°28'40"W	86.75
C6	100.00	332.07	17°15'14"	N64°21'43"W	99.82
C7	23.98	332.07	4°03'9"	N53°42'10"W	23.55
C8	42.98	226.00	10°53'44"	N57°07'07"W	42.91
C9	85.28	280.07	17°28'46"	N60°23'38"W	84.85
C10	92.30	280.07	18°52'58"	N78°33'30"W	91.89
C11	95.36	257.94	21°10'58"	N77°24'31"W	94.82
C12	17.35	257.94	3°51'15"	N64°53'24"W	17.35
C13	87.84	207.43	27°01'28"	N76°28'31"W	86.93
C14	101.35	231.94	28°02'13"	N76°28'53"W	100.55
C15	44.31	233.43	10°52'37"	N68°24°5"W	44.25
C16	85.79	233.43	18°08'51"	N81°54'49"W	85.67
C17	27.52	100.44	15°14'29"	N23°46'51"E	27.43
C18	34.03	127.84	15°14'28"	N23°46'51"E	33.93
C19	21.00	78.84	15°14'28"	N23°46'51"E	20.94
C20	120.85	226.00	30°38'14"	N77°53°0"W	119.41

RECEIVED

NOV 25 2009

City Growth Department



FEBRUARY 3, 2009  
 N.T.S.