

ΕJÜÜFG

LAYOUT NOTES

1. ALL WORK SHALL BE CONSTRUCTED IN ACCORDANCE WITH THE PLANS AND DETAILED SPECIFICATIONS
2. ALL NORTHING AND EASTING CALL OUTS AND RADII ARE FOR THE EDGE OF PAVEMENT UNLESS NOTED OTHERWISE. ALL ELEVATIONS ARE TO THE BACK OF CURB
3. ALL DIMENSIONS ARE IN FEET UNLESS OTHERWISE NOTED
4. SURVEY COORDINATES PROVIDED ARE SOUTH DAKOTA STATE PLANE, SOUTH ZONE, NORTH AMERICAN DATUM 1983/90.
5. NO GROUND DISTURBING ACTIVITIES CAN BEGUN UNTIL THE EXISTING FEATURE PROTECTION / RELOCATION OUTLINED IN THE LANDSCAPE PLANS IS COMPLETED.
6. ACCESS TO THE SITE SHALL BE FROM EXISTING DEAN LANE.
7. ALL PROPOSED SITE PAVEMENT MARKING STRIPES SHALL BE 4" WHITE.

ARC HITECTURE INTERNATIONAL
 1875 G ARK STREET SUITE 101
 RAPID CITY, SOUTH DAKOTA 57702 TEL: 605.341.3864 FAX: 605.341.3861
 BRINGING ARCHITECTURE TO YOUR WORLD

CIVIL ENGINEER:
Ferfer Engineering Company, Inc.
 729 Oak Viewcrest Dr, Rapid City, SD 57701 - Phone: (605) 343-9333
 CONTACT: DAVE MUCK

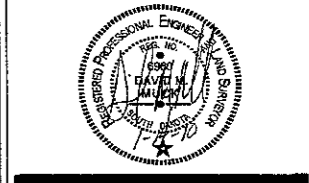
STRUCTURAL ENGINEER:
 3202 West Main
 Suite C
 Rapid City, South Dakota 57702
 605.343.9806
Albertson Engineering Inc.
 CONTACT: DAVID LEPPERT

MECHANICAL/ELECTRICAL ENGINEER:
WPE WEST PLAINS ENGINEERING, INC.
 1760 RAND ROAD • RAPID CITY, SD 57702
 PHONE: (605) 348-7465 • FAX: (605) 348-9945
 www.westplainsengineering.com
 CONTACT: MICHAEL HEINRICH
 DAREN BECKLOFF

LANDSCAPE ARCHITECT
Wyss Associates, Inc.
 728 Sixth Street
 Rapid City, South Dakota 57701
 phone: 605.348.2268 fax: 605.348.6506
 www.wyssassociates.com
 CONTACT: JAMES LUSHBOUGH

RECEIVED
 JAN 13 2010
 Rapid City Growth
 Management Department

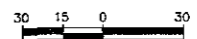
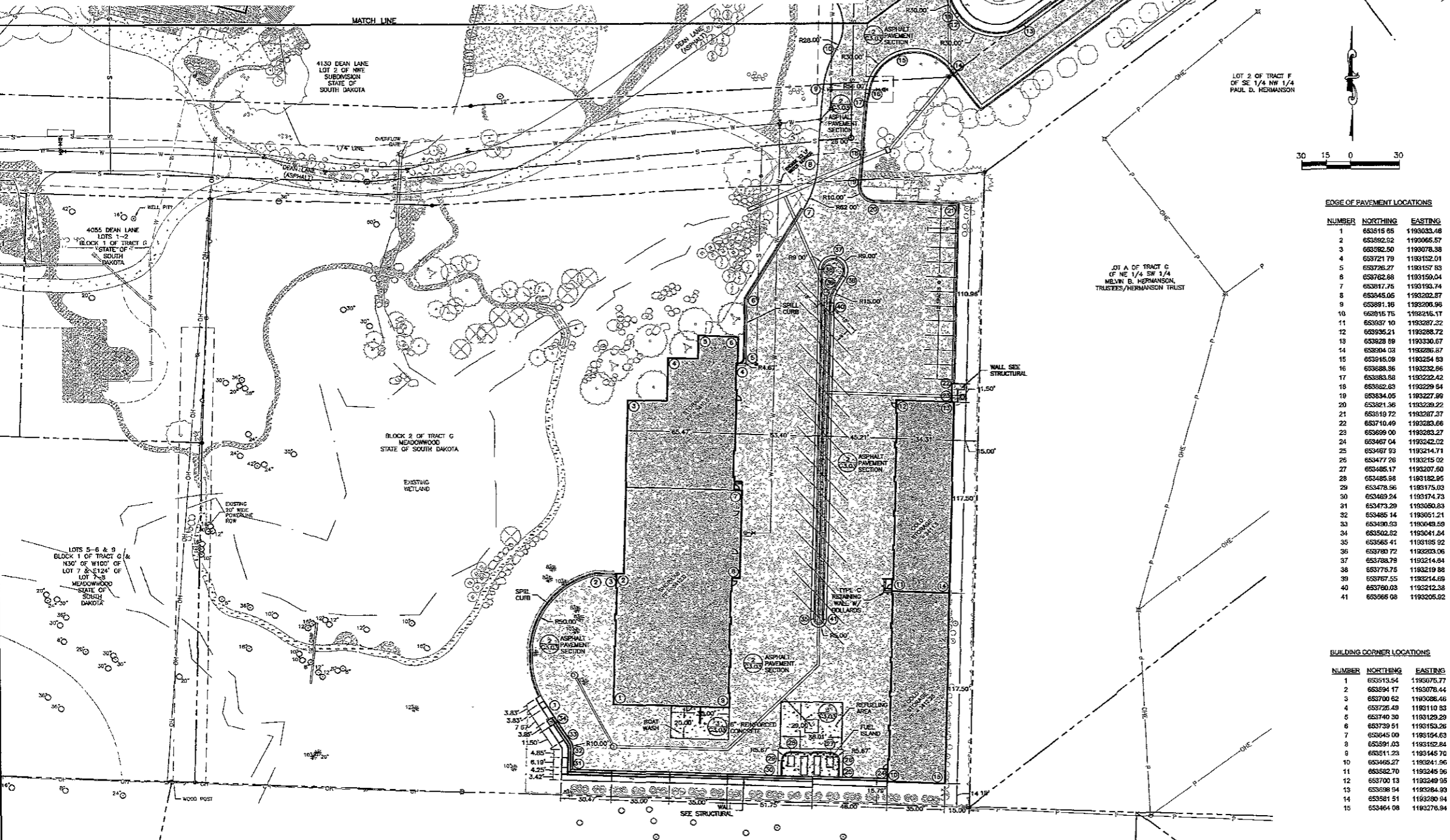
DATE: JANUARY 12, 2010
 PROJECT MANAGER: JAMES LUSHBOUGH
 PROJECT NUMBER: 2005-017



OUTDOOR CAMPUS
 South Dakota Game, Fish & Parks
 RAPID CITY, SOUTH DAKOTA

SITE PLAN - SOUTH

C1.02



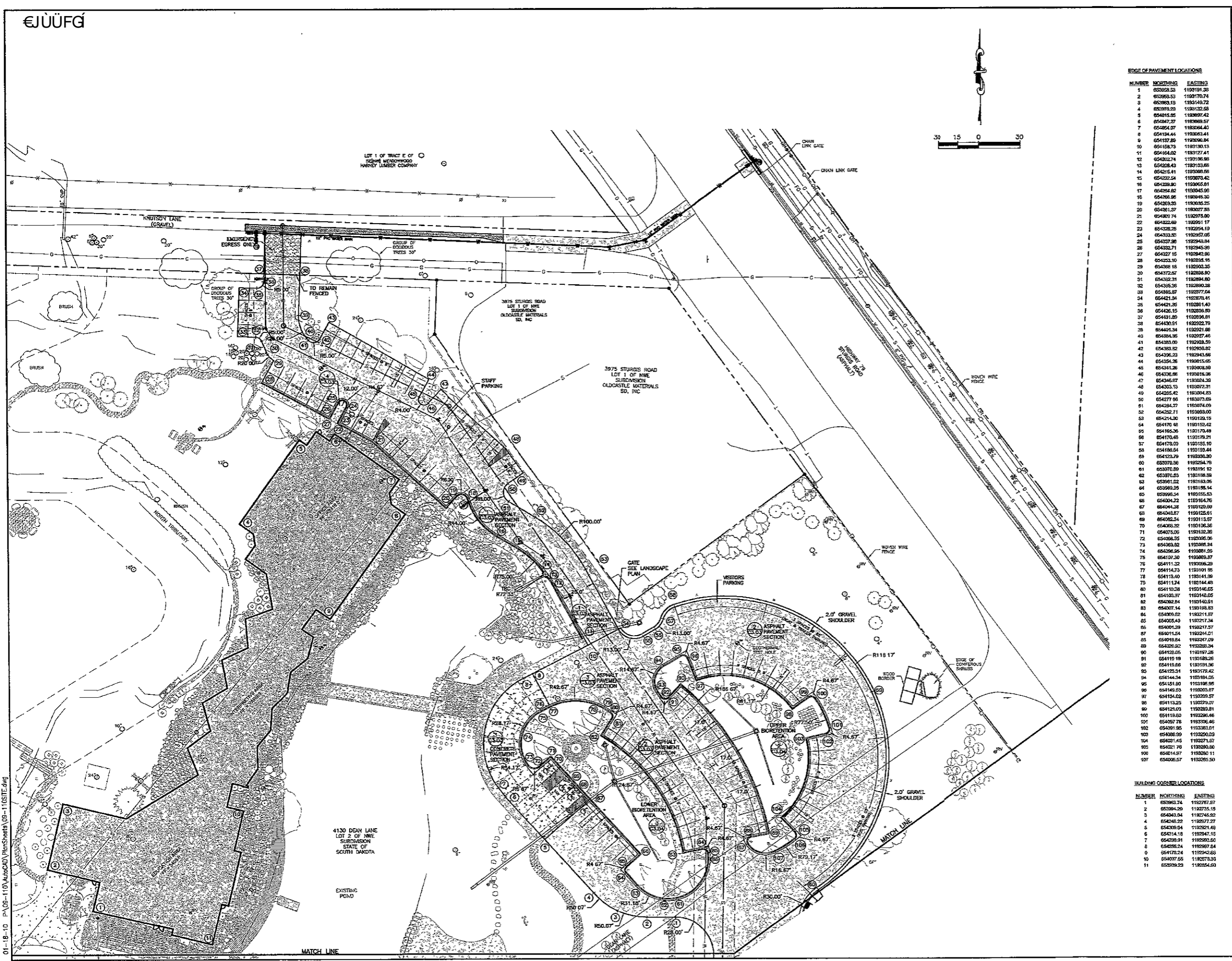
EDGE OF PAVEMENT LOCATIONS

NUMBER	NORTHING	EASTING
1	65315.85	1193033.48
2	65352.52	1193066.57
3	65362.50	1193078.38
4	65371.79	1193152.01
5	65376.27	1193157.83
6	653762.88	1193159.04
7	653817.75	1193193.74
8	653845.05	1193202.87
9	653881.16	1193206.96
10	653915.75	1193216.11
11	653937.10	1193267.22
12	653936.21	1193288.72
13	653828.89	1193330.67
14	653904.03	1193296.87
15	653915.08	1193254.83
16	653888.36	1193232.86
17	653883.88	1193232.42
18	653862.63	1193229.84
19	653834.05	1193227.89
20	653821.36	1193239.22
21	653819.72	1193267.87
22	653710.49	1193283.68
23	653629.00	1193283.27
24	653467.04	1193242.02
25	653467.93	1193214.71
26	653477.26	1193215.02
27	653485.17	1193207.60
28	653485.88	1193182.95
29	653478.96	1193175.03
30	653469.24	1193174.73
31	653473.29	1193080.83
32	653485.14	1193051.21
33	653490.03	1193049.89
34	653502.82	1193041.84
35	653565.41	1193185.92
36	653780.72	1193203.06
37	653788.79	1193214.84
38	653775.75	1193219.88
39	653767.55	1193214.69
40	653790.03	1193212.38
41	653666.08	1193205.92

BUILDING CORNER LOCATIONS

NUMBER	NORTHING	EASTING
1	653513.54	1193075.77
2	653594.17	1193076.44
3	653700.62	1193086.46
4	653725.49	1193110.83
5	653740.30	1193129.29
6	653739.51	1193153.26
7	653645.00	1193194.63
8	653591.03	1193192.84
9	653511.23	1193145.70
10	653465.27	1193041.96
11	653532.70	1193045.96
12	653700.13	1193049.95
13	653598.54	1193084.39
14	653581.51	1193280.94
15	653464.08	1193276.84

01-12-10 P:\05-110\AutoCAD\Plan\Sheet\009-110SITE.dwg



EDGE OF PAVEMENT LOCATIONS

NUMBER	NORTHING	EASTING
1	052928.23	1193191.26
2	053993.53	1193170.74
3	052993.13	1153143.72
4	052978.23	1193122.58
5	054015.55	1193697.42
6	054047.27	1193669.57
7	054054.97	1193634.42
8	054134.44	1193631.41
9	054137.89	1193690.84
10	054164.79	1193130.13
11	054164.02	1193127.41
12	054032.74	1193156.98
13	054208.43	1193103.86
14	054215.41	1193069.56
15	054222.54	1193073.42
16	054228.90	1193065.81
17	054254.82	1193045.96
18	054266.96	1193045.20
19	054269.33	1193036.25
20	054261.27	1193027.93
21	054303.74	1192975.00
22	054322.69	1192951.17
23	054328.26	1192954.19
24	054333.82	1192957.05
25	054337.98	1192949.84
26	054332.71	1192946.58
27	054327.15	1192942.96
28	054333.10	1192938.16
29	054368.18	1192903.35
30	054372.25	1192906.90
31	054392.21	1192894.80
32	054385.56	1192890.28
33	054385.87	1192877.04
34	054421.34	1192878.41
35	054421.25	1192891.49
36	054426.15	1192856.59
37	054431.81	1192836.81
38	054430.51	1192822.79
39	054407.34	1192821.88
40	054394.95	1192807.46
41	054383.00	1192828.59
42	054383.82	1192828.82
43	054396.23	1192943.66
44	054394.26	1192915.95
45	054341.28	1192908.89
46	054336.98	1192910.06
47	054346.87	1192924.30
48	054353.15	1192927.31
49	054255.42	1192904.83
50	054277.96	1192907.69
51	054284.27	1192907.69
52	054292.71	1192908.00
53	054244.30	1192919.15
54	054170.48	1192932.32
55	054165.36	1192170.48
56	054170.48	1192179.21
57	054178.00	1192185.10
58	054198.54	1192193.44
59	054123.19	1192193.44
60	053978.58	1192254.78
61	053978.89	1192191.92
62	053970.53	1192188.58
63	053961.22	1192183.05
64	053941.28	1192182.89
65	053996.54	1192155.83
66	054004.22	1192164.76
67	054044.28	1192120.69
68	054045.87	1192120.69
69	054062.54	1192113.87
70	054068.82	1192108.36
71	054075.06	1192102.38
72	054068.55	1192095.06
73	054063.82	1192095.84
74	054056.56	1192091.89
75	054107.30	1192089.37
76	054111.32	1192086.29
77	054114.73	1192101.95
78	054113.60	1192141.98
79	054111.24	1192144.48
80	054110.28	1192146.65
81	054103.97	1192142.05
82	054062.84	1192140.51
83	054067.14	1192138.83
84	054009.82	1192211.87
85	054005.49	1192217.34
86	054001.29	1192217.37
87	054015.54	1192204.21
88	054018.84	1192217.09
89	054020.82	1192226.34
90	054128.05	1192197.28
91	054419.19	1192188.26
92	054119.56	1192191.96
93	054125.51	1192178.42
94	054144.34	1192184.05
95	054151.80	1192198.95
96	054149.83	1192205.87
97	054154.02	1192229.57
98	054113.25	1192279.07
99	054121.03	1192283.81
100	054119.60	1192306.46
101	054097.78	1192306.46
102	054091.95	1192303.81
103	054088.99	1192320.03
104	054031.45	1192271.87
105	054021.79	1192280.90
106	054014.87	1192286.11
107	054005.57	1192285.50

BUILDING CORNER LOCATIONS

NUMBER	NORTHING	EASTING
1	053963.74	1192787.87
2	053994.20	1192775.15
3	054043.04	1192748.92
4	054248.22	1192877.27
5	054309.84	1192821.49
6	054214.18	1192847.13
7	054239.91	1192893.61
8	054258.24	1192997.84
9	054178.24	1192942.63
10	054037.55	1192878.33
11	053998.29	1192854.53

ARC HITECTURE INTERNATIONAL
 1125 CLARK STREET SUITE 101
 RAPID CITY, SOUTH DAKOTA 57702 TEL: 605-341-2064 FAX: 605-341-3551
 WWW.ARCINTERNATIONAL.COM
BRINGING ARCHITECTURE TO YOUR WORLD

CIVIL ENGINEER:
Ferber Engineering Company, Inc.
 Civil Engineers • Survey Resources • Transportation • Land Surveying
 728 East Veterans St., Rapid City, SD 57704 • Phone: (605) 343-2213
 CONTACT: DAVE MUCK

STRUCTURAL ENGINEER:
Albertson Engineering Inc.
 3202 West Main Suite C
 Rapid City, South Dakota 57702
 605.343.5606
 CONTACT: DAVID LEPPERT

MECHANICAL/ELECTRICAL ENGINEER:
WPE WEST ENGINEERING, INC.
 1750 RAND ROAD • RAPID CITY, SD 57702
 PHONE: (605) 348-1652 • FAX: (605) 348-9442
 WWW.WPEENGINEERING.COM
 CONTACT: MICHAEL HEINRICH
 DAREN BECKLOFF

LANDSCAPE ARCHITECT:
Wyss Associates, Inc.
 728 Sixth Street
 Rapid City, South Dakota 57701
 phone: 605.348.2268 fax: 605.348.6506
 Landscape Architecture • Land Planning • Tree Care Architecture
 CONTACT: MATT FRIDELL

RECEIVED
JAN 19 2010
Rapid City Growth
 Planning & Development Dept.
 DATE: JANUARY 12, 2010
 PROJECT MANAGER: JAMES LUSHBOUGH
 PROJECT NUMBER: 2005-017



OUTDOOR CAMPUS
 South Dakota Game, Fish & Parks
 RAPID CITY, SOUTH DAKOTA

SITE PLAN - NORTH

C1.03

01-18-10 P:\09-110\AutoCAD\Plan\Sheet\09-110SITE.dwg