

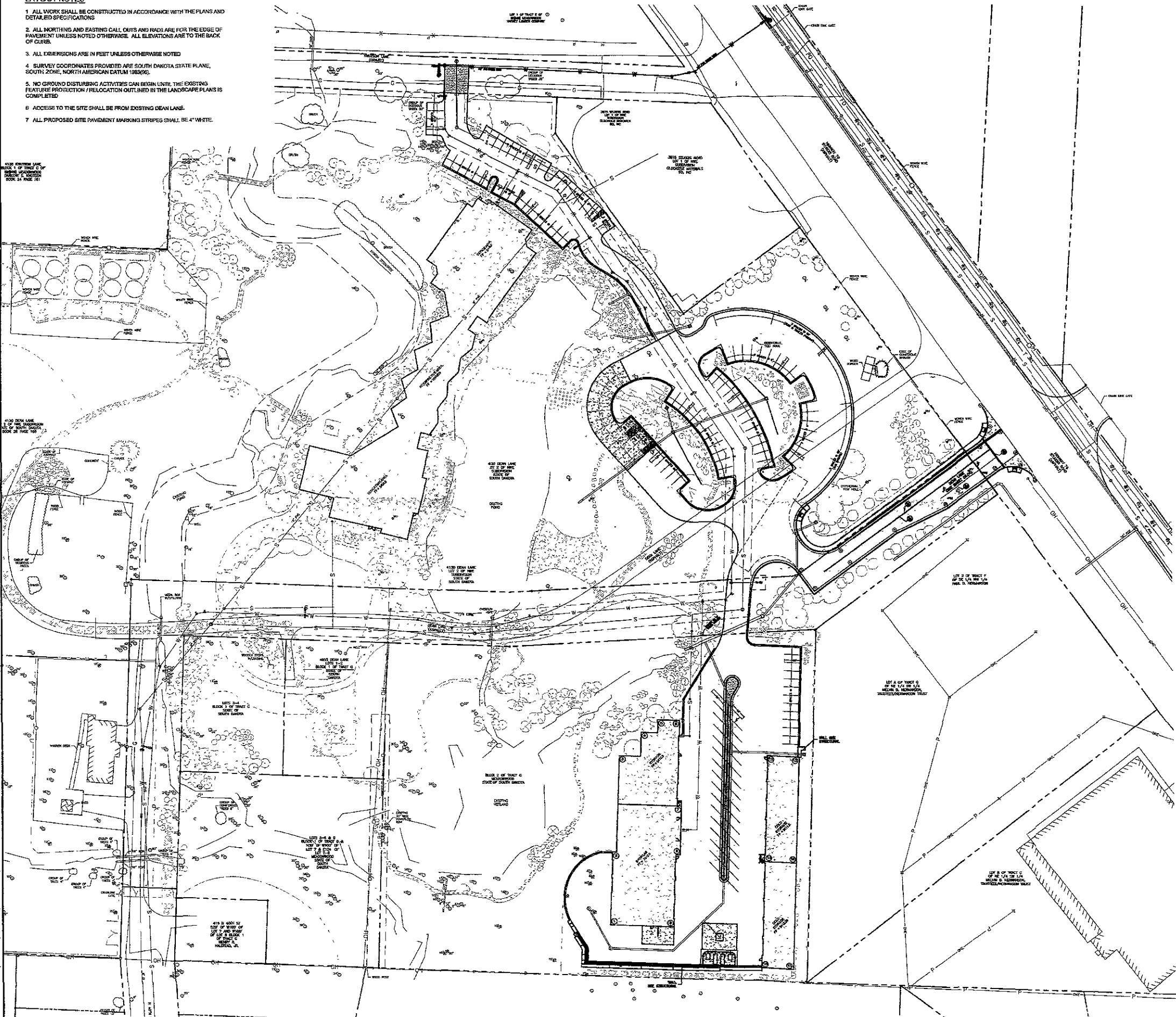
LAYOUT NOTES

1. ALL WORK SHALL BE CONSTRUCTED IN ACCORDANCE WITH THE PLANS AND DETAILED SPECIFICATIONS
2. ALL NORTHING AND EASTING CALL OUTS AND RADII ARE FOR THE EDGE OF PAVEMENT UNLESS NOTED OTHERWISE. ALL ELEVATIONS ARE TO THE BACK OF CURB.
3. ALL DIMENSIONS ARE IN FEET UNLESS OTHERWISE NOTED
4. SURVEY COORDINATES PROVIDED ARE SOUTH DAKOTA STATE PLANE, SOUTH ZONE, NORTH AMERICAN DATUM 1983(96).
5. NO GROUND DISTURBING ACTIVITIES CAN BEGIN UNTIL THE EXISTING FEATURE PROTECTION / RELOCATION OUTLINED IN THE LANDSCAPE PLANS IS COMPLETED
6. ACCESS TO THE SITE SHALL BE FROM EXISTING DEAN LANE.
7. ALL PROPOSED SITE PAVEMENT MARKING STRIPES SHALL BE 4" WHITE.

4130 FRONT LANE  
BLOCK 1 OF TRACT C  
OF THE S.D. STATE  
HIGHWAY 85  
BOOK 24 PAGE 181

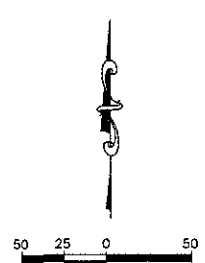
4130 FRONT LANE  
BLOCK 1 OF TRACT C  
OF THE S.D. STATE  
HIGHWAY 85  
BOOK 24 PAGE 181

01-15-10 P:\09-10\AutoCAD\Plansheets\09-11\09TEO\FRALL.dwg



NOTE  
SEE SHEETS C1.02 AND C1.03 FOR  
STAMPED SITE PLAN SHEETS  
PREVIOUSLY PROVIDED WITH PLANS.

RECEIVED  
JAN 18 2010  
Rapid City Growth  
Management Department



ARCHITECT  
**ARC**HITECTURE  
INTERNATIONAL  
1825 CLARK STREET SUITE 101  
RAPID CITY, SOUTH DAKOTA 57702 TEL: 605-341-2066 www.ARCatRC.com  
FAX: 605-341-2651  
BRINGING ARCHITECTURE TO YOUR WORLD

CIVIL ENGINEER:  
**FEC** Ferber  
Engineering  
Company, Inc.  
Civil Engineering • Water Resources • Transportation • Land Surveying  
729 East Wabtown St., Rapid City, SD 57701 • Phone: (605) 343-2312  
CONTACT DAVE MUCK

STRUCTURAL ENGINEER:  
**AEI** Albertson Engineering Inc.  
3202 West Main  
Suite C  
Rapid City, South Dakota 57702  
605.343.9606  
CONTACT: DAVID LEPPERT

MECHANICAL/ELECTRICAL ENGINEER:  
**WPE** WEST PLAINS  
ENGINEERING, INC.  
1750 RAND ROAD • RAPID CITY, SD 57702  
PHONE: (605) 348-7455 • FAX: (605) 348-8445  
www.westplainsengineering.com  
SAND CITY SD • BROOKFIELD SD • CASPER WY • DEER RAPIDS, IA  
CONTACT MICHAEL HEINRICH  
DAREN BECKLOFF

LANDSCAPE ARCHITECT:  
Wyss Associates, Inc.  
728 Sixth Street  
Rapid City, South Dakota 57701  
phone 605 348 2248 fax 605 348 6506  
Landscape Architecture • Land Planning •  
Site Character Architecture  
CONTACT: MATT FRIDELL

RECEIVED  
JAN 18 2010  
Rapid City Growth  
Management Department JANUARY 12, 2010

PROJECT MANAGER: JAMES LUSHBOUGH  
PROJECT NUMBER: 2005-017

FOR INFORMATIONAL  
PURPOSES ONLY



PARKING LAYOUT  
**1 OF 1**