

GENERAL NOTES

1. PRAIRIE REMNANT CONSERVATION: CONTRACTOR SHALL SOO-CUT AND RE-PLANT 2,500 SF OF PRAIRIE GRASSES AND ASSOCIATED FORBS ON SITE AT LOCATIONS COORDINATED WITH OWNER AND LANDSCAPE ARCHITECT. ADDITIONAL SOO CUTTING AND TRANSPLANTING MAY BE DONE IN LIEU OF SEEDING TYPE #4 OR TYPE #5 PLANTING AREAS. COORDINATE WITH OWNER AND LANDSCAPE ARCHITECT. THE SOO CUTTING MUST BE DONE PRIOR TO TOPSOIL PLACEMENT. COORDINATE WITH OTHER TRADES.
2. CROWN CONSERVATION: CONTRACTOR IS TO PROTECT, STAKE AND RE-TRANSPLANT UP TO 100 TREES FROM LOWER SLOPES OF THE PRAIRIE REMNANT AREA. SEE SPECIFICATIONS FOR FURTHER INFORMATION.
3. CONTRACTOR SHALL PROVIDE CERTIFICATION TO LANDSCAPE ARCHITECT OF ALL PLANTS FROM OPEN RESERVE, AND FROM CONTRACT GROWN, OR HAVE BEEN OBTAINED WITHIN THREE (3) MONTHS OF BID AWARD.

ARCHITECT:

ARC HITECTURE
INTERNATIONAL

BRINGING ARCHITECTURE TO YOUR WORLD

CIVIL ENGINEER:

Ferber Engineering Company, Inc.

CONTACT: DAVE WICK

STRUCTURAL ENGINEER:

Albertson Engineering Inc.

CONTACT: DAVID LUTYAN

MECHANICAL/ELECTRICAL ENGINEER:

WPE

CONTACT: DOUG FERRELL
DAVID BUNN

LANDSCAPE ARCHITECT:

Wyss Associates, Inc.

CONTACT: MATT REDELL

PLANTINGS, FENCELINE AND LIGHT STANDARD LOCATION ADJUSTMENTS ALONG CURB REALIGNMENT

DATE: NOVEMBER 12, 2009

PROJECT MANAGER: MATHW G. FRIDELL

PROJECT NUMBER: 2006-017



PLANTING PLAN

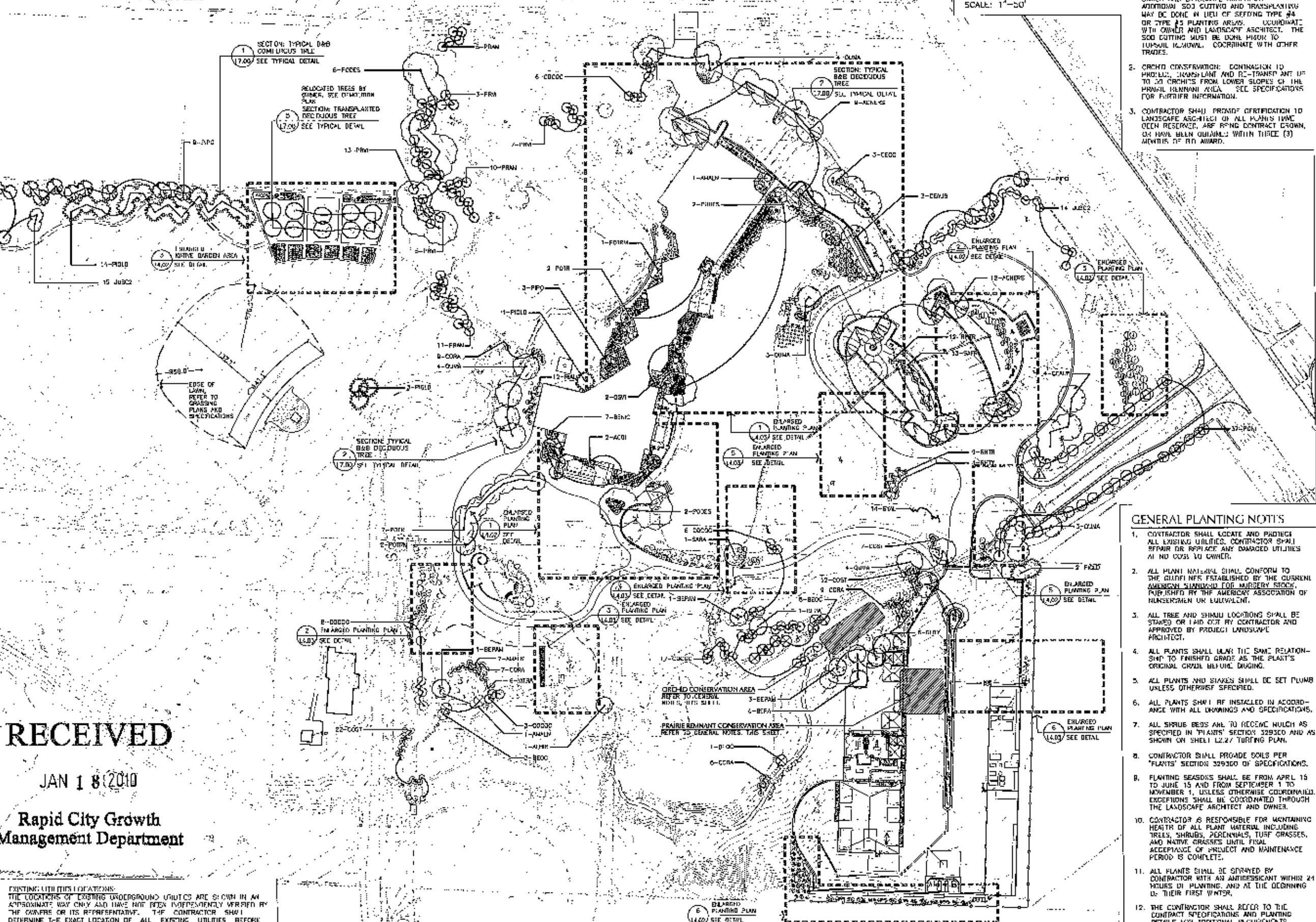
L4.00R

RECEIVED

JAN 18 2010

Rapid City Growth Management Department

EXISTING UTILITIES LOCATIONS:
THE LOCATIONS OF EXISTING UNDERGROUND UTILITIES ARE SHOWN IN AN APPROXIMATE WAY ONLY AND HAVE NOT BEEN INDEPENDENTLY VERIFIED BY THE OWNER OR ITS REPRESENTATIVE. THE CONTRACTOR SHALL DETERMINE THE EXACT LOCATION OF ALL EXISTING UTILITIES BEFORE COMMENCING WORK, AND AGREES TO BE FULLY RESPONSIBLE FOR ANY AND ALL DAMAGES WHICH MIGHT BE INCURRED BY THE CONTRACTOR'S FAILURE TO EXACTLY LOCATE AND PRESERVE ANY AND ALL UNDERGROUND UTILITIES. CONTACT THE SOUTH DAKOTA UTIL. COMM. NOTIFICATION CENTER 2025 CLYDE BOULDER BOULEVARD SUITE 100 MENARD HEIGHTS, MN 55520 1-800-781-7474



GENERAL PLANTING NOTES

1. CONTRACTOR SHALL LOCATE AND PROTECT ALL EXISTING UTILITIES. CONTRACTOR SHALL REPAIR OR REPLACE ANY DAMAGED UTILITIES AT NO COST TO OWNER.
2. ALL PLANT MATERIAL SHALL CONFORM TO THE STANDARDS ESTABLISHED BY THE CURRENT AMERICAN STANDARD FOR NURSERY STOCK, PUBLISHED BY THE AMERICAN ASSOCIATION OF HORTICULTURISTS OR EQUIVALENT.
3. ALL TREE AND SHRUB LOCATIONS SHALL BE STAKED OR LAID OUT BY CONTRACTOR AND APPROVED BY PROJECT LANDSCAPE ARCHITECT.
4. ALL PLANTS SHALL MAINTAIN THE SAME RELATIONSHIP TO FINISHED GRADE AS THE PLANT'S ORIGINAL GRADE BEFORE DIGGING.
5. ALL PLANTS AND STAKES SHALL BE SET PLUMB UNLESS OTHERWISE SPECIFIED.
6. ALL PLANTS SHALL BE INSTALLED IN ACCORDANCE WITH ALL DRAWINGS AND SPECIFICATIONS.
7. ALL SHRUB BEDS ARE TO RECEIVE MULCH AS SPECIFIED IN 'PLANTS' SECTION 329300 AND AS SHOWN ON SHEET L2.27 TURFING PLAN.
8. CONTRACTOR SHALL PROGRADE SOILS PER 'PLANTS' SECTION 329300 OF SPECIFICATIONS.
9. PLANTING SEASONS SHALL BE FROM APRIL 15 TO JUNE 15 AND FROM SEPTEMBER 1 TO NOVEMBER 15 UNLESS OTHERWISE COORDINATED. EXCEPTIONS SHALL BE COORDINATED THROUGH THE LANDSCAPE ARCHITECT AND OWNER.
10. CONTRACTOR IS RESPONSIBLE FOR MAINTAINING HEALTH OF ALL PLANT MATERIAL INCLUDING TREES, SHRUBS, PERENNIALS, TURF GRASSES, AND NATIVE GRASSES UNTIL FINAL ACCEPTANCE OF PROJECT AND MAINTENANCE PERIOD IS COMPLETE.
11. ALL PLANTS SHALL BE SPRAYED BY CONTRACTOR WITH AN ANTIFUNGIC WITHIN 24 HOURS OF PLANTING, AND AT THE BEGINNING OF THEIR FIRST WINTER.
12. THE CONTRACTOR SHALL REFER TO THE CONTRACT SPECIFICATIONS AND PLANTING DETAILS FOR ADDITIONAL REQUIREMENTS.
13. THE CONTRACTOR SHALL PROVIDE A ONE (1) YEAR WARRANTY FOR ALL PLANT MATERIAL UNLESS OTHERWISE INDICATED IN SPECIFICATIONS. REPLACEMENT PLANT MATERIAL IS SUBJECT TO THE SAME (1) YEAR WARRANTY.